

**"From our first job more than 40 years ago, we have committed ourselves to providing superior service to every customer."**

There have been many dramatic advancements in aviation since 1948, and we have changed to take advantage of them. Yet one thing remains the same, our dedication to service.

We began as a people-oriented company dedicated to giving you the very best service. It's a commitment that allowed us to continually expand to meet your changing needs.

We appreciate the trust you have placed in Era Aviation in the past, and we look forward to meeting your aviation needs in the years ahead.

*Wilbur O'Brien*

Wilbur O'Brien  
President



Era Aviation, Inc.  
6160 South Airpark Dr.  
Anchorage, Alaska 99502  
Tel. (907) 248-4422



Resource Development Council  
121 W. Fireweed, Suite 250  
Anchorage, AK 99503  
ADDRESS CORRECTION REQUESTED

Bulk Rate  
U.S. Postage  
PAID  
Anchorage, AK  
Permit No. 377



This edition  
sponsored by:

**ERA Aviation, Inc.**

# Resource Review

November 1992 A monthly publication of the Resource Development Council, Inc.

1992 RDC Candidate Survey

## Candidates address resource issues

by Debbie Reinwand

Roads and infrastructure, the opening of ANWR and resolution of the long-debated Mental Health Trust Lands issue are all concerns of Alaska's legislative candidates responding to RDC's election year survey.

Economic and resource issues were the focus of RDC's 1992 candidate questionnaire, which covered a gamut of issues. Of the 140 individuals seeking legislative office, 88 responded to RDC's questions.

The straightforward survey asked candidates if they support ANWR exploration and drilling; a state-funded ANWR advocacy campaign; incentives to encourage oil exploration and development; an amendment to resolve the Mental Health Trust Lands issue; what level of timber harvest they support; and finally, an array of revenue-enhancing funding priorities were ranked by the candidates.

One of the big surprises in the candidate survey was the overwhelming support for an amendment similar to that supported by RDC during the 1992 legislative session, that would bring the

**Survey Key**

Results on pages 4-5

Party Affiliation Key			
R - Republican	D - Democrat	AIP - Ak. Ind. Party	G - Green

---

**Question 1** - Are you for or against exploration and development of ANWR's coastal plain?

---

**Question 2** - Do you support a state appropriation for ANWR advocacy?

---

**Question 3** - What incentives do you support to encourage continued oil development in Alaska?

- 1 - Exploration incentives on new fields
- 2 - Development incentives for known reserves
- 3 - Exploration incentives in general
- 4 - Reduced royalties
- 5 - Reduced taxes
- 6 - Investment credits

---

**Question 4** - Do you support an amendment to the Mental Health Trust Lands Settlement Act, Chapter 66, as advocated by RDC and others in 1992?

---

**Question 5** - Do you favor increasing or decreasing timber harvest levels in Alaska? MSY means candidates support maximum sustainable yield levels.

---

**Question 6** - Rank potential revenue-producing budget items in order of importance. Items on the survey were:

1 - ANWR advocacy effort	2 - Seafood marketing
3 - Tourism marketing	4 - Road/infrastructure development
5 - State timber sales	

current Mental Health Trust Lands dead-lock to resolution.

RDC, the Alaska Miner's Association, the Alaska Coal Association and a consortium of environmental groups supported what is known as the Volland

amendment that would reconstitute some of the trust lands and provide a revenue stream of 6% from the general fund for mental health programs.

Although the funding issue was  
*(Continued to page 3)*



At left, Senate Minority Leader Bob Dole with (left to right) RDC Deputy Director Debbie Reinwand, Executive Director Becky Gay and President Paul Glavinovich at the Oct. 15 breakfast meeting.



**Message from  
the Executive  
Director**  
by  
Becky L. Gay

situation in Congress. We appreciate *Usibelli Coal Mine* allowing us to reschedule the Clean Coal Technology presentation to December 3 in order to accommodate the Senator.

Then off we went on a RDC community outreach trip to **Sitka** — one of the best ever! There was a festive Alaska-day atmosphere to every activity, as Sitka gives this historic day its due! Sitka is the site where the Russian flag was taken down and the American flag raised over Alaska, so every year a full military and community celebration takes over the town. As the joke goes, "Just think, if Alaska hadn't been sold by Russia, we'd be celebrating a free country today."

Mayor **Dan Keck** of Sitka was our community host. Many thanks to you, Mayor Dan, for all the extra you and your community gave to RDC.

Board members and spouses accompanying **President Paul Glavinovich** and **Jackie** were **Vice-Presidents Kelly Campbell** and **Jim Cloud**, Past RDC President **Joe Henri**, **Elizabeth Rensch**, **Lyle Von Barga**, **Valdez**, **Jim** and **Donna Davis**, **Roger** and **Lorna Herrera**, **Karen Hofstad**, **Petersburg**, **Barry** and **Eleanor Thomson**, **Kenai**, **Mitch Usibelli**, **Healy**, and Honorary Director **Phil Holdsworth**, **Juneau**.

**Joe Henri** and RDC Communications **Director Carl Portman** then flew on to Ketchikan to carry the RDC banner and plaque of appreciation to the Alaska Forest Association's special retirement dinner for long-time board member **Don Finney**. Thanks to **Martin Pihl**, **Clyde Johnson** and **Steve Connelly** of *Ketchikan Pulp Corporation* for a great tour of the KPC facilities.

A special RDC thanks for the excellent Sitka field trips goes to **Frank Roppel**, **Rollo Pool** and the gang at *Alaska Pulp Corporation*, **Harold Thompson** at *Sitka Sound Seafoods*, **Dick Griffin** at the *Alaska Raptor Rehabilitation Center*, and **Ann Chadwick** at the *Sitka Convention & Visitors Bureau*. We also thank all of the numerous Sitka residents, members of the Borough Assembly and Sitka Chamber for making RDC feel so warmly welcomed. Those of us who stayed over for the exciting Sitka Day parade on Sunday had an extra fun-filled experience.

The past month has definitely been full of RDC spirit-building activity and a great example of RDC's community interest. We thank each and every one of you for your participation. Let's hope to see each other at the RDC conference and end November on an equally good note!

From Southcentral to Southeast Alaska

## A busy October for RDC

What a busy month for RDC! A RDC Thursday breakfast debate on water quality regulations led off, with RDC hopefully stimulating lots of "Do-Your-Part" comments on the proposed revisions.

The following well-attended breakfast meeting was co-hosted with other concerned groups on the "fiscal gap" in state government and featured presentations by Economist **Lee Gorsuch** of *ISER* and **George Findling** of *ARCO*.

It's a political year, so a Big Thanks goes to the elected officials and candidates who took the time to attend this educational forum. For a further look at how the candidates stand on resource development issues, check out the RDC questionnaire response "centerfold" by Deputy Director **Debbie Reinwand**.

A turn of events gave RDC breakfast attendees **Senator Bob Dole** (R)(Kansas), U.S. Senate Minority Leader, as an unexpected, and very enjoyable speaker. **Thanks to the Alaska delegation** for bringing any U.S. Senator back to Alaska during the cold, dark season, but especially the leadership, to give some political history regarding Alaska's

The Resource Development Council (RDC) is Alaska's largest privately funded nonprofit economic development organization working to develop Alaska's natural resources in an orderly manner and to create a broad-based, diversified economy while protecting and enhancing the environment.

### Executive Committee Officers

President ..... Paul S. Glavinovich  
Vice President ..... Kelly M. Campbell

Vice President ..... James L. Cloud  
Secretary ..... Scott L. Thorson  
Treasurer ..... Kyle Sandel  
Past President ..... John A. L. Rense

### Staff

Executive Director ..... Becky L. Gay  
Deputy Director ..... Debbie Reinwand  
Communications Director ..... Carl R. Portman  
Special Assistant ..... Kimberly R. Duke  
Staff Assistant ..... Nancy Davis

**Resource Review** is the official monthly publication of the Resource Development Council. RDC is located at 121 W. Fireweed, Suite 250, Anchorage, AK 99503, (907) 276-0700.

Material in the publication may be reprinted without permission provided appropriate credit is given.

Writer & Editor  
Carl Portman

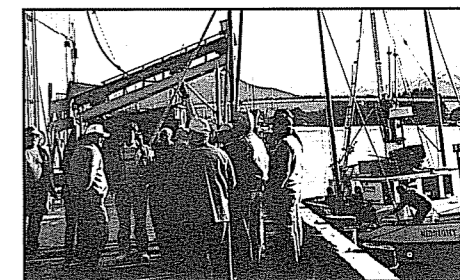
© RDC 1992

October community outreach

## RDC Board visits "Sitka by the Sea"



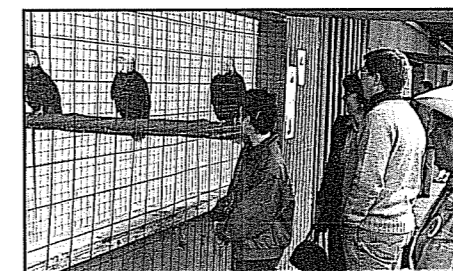
Harold Thompson of Sitka Sound Seafoods (lower right) is surrounded by members of RDC's statewide board and staff on the dock at the Sitka fish processing plant.



RDC board members join Harold Thompson of Sitka Sound Seafoods for a tour of the fish processing facilities.



RDC President Paul Glavinovich observes technicians at the Alaska Raptor Rehabilitation Center examine an injured eagle. At right, Vice Presidents Jim Cloud and Kelly Campbell join Executive Director Becky Gay and Deputy Director Debbie Reinwand for a tour of the ARRC in Sitka.



The Alaska Day parade in Sitka draws large crowds to the old Russian capital of Alaska.

RDC Honorary Board member Phil Holdsworth addresses mining issues before the board meeting in Sitka October 17.



RDC Board member Dan Keck, Mayor of Sitka, hosted the board on its community outreach trip October 16-18.



Above, RDC board members tour the Alaska Pulp Corporation facilities near Sitka. At right, APC Executive Vice President Frank Roppel and Public Relations Director Rollo Pool address the group.



Photos by  
Becky Gay &  
Carl Portman



RDC's 13th Annual Conference  
**Needs of the '90s:**  
*Prosperity and the Environment*

**General Schedule - Hotel Captain Cook**

Registration: 7:30 a.m.  
 Complimentary coffee, pastries & fruit  
 Program: 8:30 a.m. - 5:00 p.m.  
 Holiday breaks featuring gourmet refreshments  
 Gourmet Luncheons: 12:00 Noon

**Thursday, November 19th**

**Planet Earth: Endangered?**

**Environmental Threats: Real vs. Perceived?** "Fossil" Bill Kramer, National newspaper columnist on the environment, Silver Bay, MN  
**Recent Scientific Findings: Global Warming, Ozone Depletion, Acid Rain,** Sally Baliunas, Chairman of Science Advisory Board, George C. Marshall Institute, and Astrophysicist, Harvard-Smithsonian Astrophysical Observatory, Washington, D.C.  
**Environmental Success Stories: What the Greens Won't Tell You,** R.J. Smith, Director of Environmental Studies, The Cato Institute, Washington, D.C.  
**E-N-V-I-R-O-NOMICS: Balancing Economic and Environmental Interests,** Henry Lamb, Director, Eco-Environmental Conservation Organization, Maywood, IL

**KEYNOTE PRESENTATION:**

**Mental Health Trust Lands:  
 Economic Opportunity Hangs in the Balance**

**Jeff Jessee,** Supervising Attorney, Advocacy Services, **Cliff Eames,** Issues Director, Alaska Center for the Environment, **Charles Boddy,** Vice President, Govt. Relations, Usibelli Coal Mine, Inc.

**The Cost of Clean: Who Pays?**

**Environmental Mandates: The Impact on Your Business,** Tom Dilonzo, Professor of Economics, Loyola College, Baltimore, MD  
**Measuring Costs & Benefits of Environmental Programs in Outside Communities,** Mike Pompili, Health Commissioner, City of Columbus, OH  
**Passing the Buck: The Mandate Crisis for Alaska Communities,** Mayor Tom Fink, Anchorage, Mayor Jamie Parsons, Juneau and Mayor John Handeland, Nome  
*- Local Governments Address Unfunded Initiatives*  
**Industry and the New Environmental Mandates,** Bill Kelly, Director, Institute for Regulatory Policy, Washington, D.C.

**Friday, November 20th:**

**The Green Regime: New Direction in Federal Environmental Policy**

**Environmental Policy and the New Congress,** Senator Larry Craig, Republican, ID  
**People: The Next Endangered Species,** Bill Horn, Environmental Attorney, Birch, Horton, Bittner and Cherot, and Special Advisor to Alaska Wetlands Coalition, Washington, D.C.  
*- Endangered Species Act, Biodiversity, Rio Conference, The Cost of Taking Land Out of Production*  
**Is The Energy Debate Really About Energy?** Floy Lilly, Environmental Attorney and Program Manager for Chair of Free Enterprise, University of Texas, Austin, TX  
**Landgrab: They're After Your Property,** Jim Burling, Environmental Attorney, Pacific Legal Foundation, Sacramento, CA  
*- Federal Wetlands Policy, The "Takings" Issue*

**KEYNOTE PRESENTATION**

**ANWR: The Great Debate**

**Stephen McAlpine,** Chair, Arctic Power!  
**Allen E. Smith,** Alaska Regional Director, The Wilderness Society

**Private Sector Solutions to Today's Environmental Problems**

**The Challenges Facing Regulators: Striking A Balance,** John Sandor, Commissioner, Alaska Department of Environmental Conservation, Chuck Findley, Director, Water Resources Division, Environmental Protection Agency, Region 10, Seattle, WA, Robert Oja, Chief, Regulatory Branch, U.S. Army Corps of Engineers  
**You've Heard The Problem: Here's the Solutions,** Chuck Cushman, President, National Inholders Association and Multiple Use Land Alliance, Battle Ground, WA  
*- Using the Issues to Win*  
**Empowering People to Capture the Vision,** Barbara Grannell, Executive Director, People for the West! Pueblo, CO  
*- Here's How You Can Make A Difference*



**Thoughts from the President**

by  
 Paul S. Glavinovich

**Conference to address Cost of Clean**

The Cost of Clean.  
 That was the headline of the October 1992 Resource Review. In the article that followed that headline, readers learned that the estimated cost of federal environmental mandates to the Municipality of Anchorage for the 1991-2000 period total \$429,936,737. Now if that did not get your attention, perhaps this figure from the EPA will -- it now costs business over \$155 billion every year to comply with federal environmental laws. Many of our environmental laws and regulations are a product of the federal Clean Air and Clean Water Acts and each, with their promulgation, involved some sort of a risk assessment; unfortunately, many of these assessments suffered from an obvious lack of common sense. For example, John Goodman of the Dallas-based National Center for Policy Analysis reports a 1990 EPA regulation on wood preservatives that imposed costs at a rate of \$5.7 trillion per life presumed saved. Can you imagine the lives that would be saved if these sort of dollars were devoted to infant nutrition programs? Ross Perot would probably say "It's time that we re-think our priorities."

There is little question that our society, spelled government, must start infusing regulation-generating environmental programs with a strong dose of reality and common sense. Private enterprise cannot survive indefinitely under the dark cloud of non-productive environmental mandates that not only threaten the financial viability of that enterprise, but also rob U.S. business of its international competitiveness and suppress individual initiative and incentive. John Cross, writing in the Renewable Resources Journal, concludes that "it is no longer a matter of tradeoffs between economic growth and environmental quality. Environmental protection is a prerequisite for sustained economic growth. Development is, in turn, essential to the technological advancement that will be needed to sustain current and future populations within the carrying capacity of the environment."

Is there a solution? RDC thinks there is and has structured its 13th Annual Conference, "Needs of the '90s: Prosperity and the Environment," to address just such issues. The conference, featuring speakers of national stature, will take place in Anchorage on November 19-20.

This is a must attend for all in the private, public and regulatory sectors of the business world and for those on the other side of the pendulum as well.

**Candidates respond to RDC survey**

(Continued from page 1)

philosophically difficult to wrestle with, supporters of the amendment believed that even with a large amount of acreage, it would be difficult for the Mental Health Authority to derive enough income from resource development to support mandated programs.

In addition, the larger issue of the increasing amount of land being held in "limbo" status under the Chapter 66 settlement act was a concern to resource developers. Nearly 8 million acres are currently on the list of selected or hypothesized lands that could be conveyed to the trust, making it nearly impossible to do any development on those lands.

Many incumbent legislators who were opposed to the settlement during the recent session have changed their opinions and are in favor of a settlement.

Notably, Sen. Rick Halford, R-Chugiak, had been opposed to the amendment, but as events have unfolded, and the issue remains in the courts without resolution, his view has changed. "It is apparent that some sort of legislative resolution is needed... the issues before the court now could drag this out for a long time," Halford said. The other main opponent to the amendment, Rep. Cliff Davidson, D-Kodiak, did not respond to RDC's survey.

ANWR was supported by all the viable candidates who answered RDC's questionnaire, although state funding for a pro-ANWR campaign was not as well-received. A majority of candidates do support a state-funded effort, but many attached stipulations as to how the money would be expended. Funding proposals ranged from Democrat Fate Putman's suggestion of \$100 for FY '94 to more than \$3 million, advocated by incumbents Jim Zawacki, Bert Sharp and Bill Hudson.

With the decline of Prudhoe Bay and the contraction of industry in Alaska, RDC wanted candidates to consider oil industry incentives for exploration and development. Most incentives listed, which included exploration credits and tax credits, were well-received. The only incentive that was not favored by a majority of candidates was a tax reduction, which is not surprising, since 85% of the state's operating budget is funded from oil taxes and revenues.

As in year's past, RDC was also interested in candidate's views on the level of timber harvesting in the state. Nowhere in Alaska is the industry allowed to log at the maximum sustainable yield level on public lands, but a majority of candidates favor increasing harvests to that level.

Finally, RDC asked candidates to review a list of funding priorities, the majority of which are potential revenue-producing items, such as timber sales, seafood and tourism marketing, road and infrastructure development and ANWR advocacy. Infrastructure development was a clear winner among the candidates, with ANWR, seafood and tourism promotion also ranking high on the list.

# RDC candidate survey:

*Where they stand on your issues*

Candidate Name	Seat	Party	ANWR	ANWR Funding	Oil Industry Incentives	Mental Health Amendments	Timber Harvest	Funding Priorities
Robin Taylor (!)	Senate A	R	For	For	Supports all listed	Oppose	Increase (MSY)	5,4,1,2,3 (Hydro)
Jim Duncan (!)	Senate B	R D	For	For	Supports 1,2	Supports	Increase (MSY)	2,3,1,4,5
Joe A. Marks	Senate E	R Write-In	For	For	Supports all listed	Supports	Increase (MSY)	Public safety 4,5,1,2,3
Jim Zawack (!)	Senate E	R	For	For	Supports all listed	Supports	Increase (MSY)	1, all others equal
Drue Pearce (!)	Senate F	R D	For	For	Supports 1,2,3,4,6	Supports	Increase (MSY)	Oil/gas leasing 5,1,2,3,4
David "Doc" Harrison	Senate F	R D	For	For	Supports 1,3,4,5,6	Supports	Increase (MSY)	4,5,1,3,2
Loren Leman	Senate G	R D	For	For	Supports all listed	Supports/Needs closure	Increase	4,1,5,2,3
Ron Zobel	Senate G	D	For	Against	Supports 1,6	Supports	Conservative sus. yield	3,2,4,5
William F. Webb	Senate H	R R	For	For	Supports all but 5	Supports	Increase (MSY)	1,5,4,2,3
Timothy Feller	Senate H	G	For	Against	Supports 2,6	Opposes	Increase (MSY)	Value added products,2,3,4
Margaret Fischer	Senate I	ALP	For	For	Supports all listed	Supports	Increase (MSY)	1,4,5,2,3
James Garrigues	Senate I	Ind. D	For	For	Supports 1,3,6	Supports	Increase (MSY)	Voc-tech. ed. 4,2,5,3
Steve Rieger	Senate I	R	For	For	Supports 1,2,3,4	NR	Increase	4,3,2,1,5
Robert Giggler	Senate I	ALP	For	Against	Supports 2, 3,6	Supports	Increase (MSY)	2,3,4,5
Dave Donley	Senate J	D	Against	For	Supports 2, 3,6	Supports	Increase	1,3,4,2,5
Larry Baker	Senate J	R R	For	For	Supports all listed	Supports	MSY Only	4,2,3,1,5
Jim Estes	Senate K	D	For	For	Supports all listed	Supports	Increase (MSY)	1,4,5,2,3/Coal dev.
Tim Kelly	Senate K	R R	For	For	Supports all listed	Oppose	Increase	1,5,4,3,2
Randy Phillips	Senate L	R R	For	For	Supports 2, 3,4,6	Supports	Increase	4,1,5,2,3
Rick Halford (!)	Senate M	R R	For	For	Supports all listed	Supports	Increase (MSY)	Oil/gas leasing 1,4,3,5,2
Barb Lacher	Senate M	INDP	For	For	Supports all listed	Supports	MSY Only	1,4, 3,2,5
Jay Kerttula (!)	Senate N	D	For	Against	Supports 1,3,6	Supports resolution	Increase in certain areas	Fish hatcheries 4,3,2,5
Darcie Salmon	Senate N	R R	For	For	Supports all listed	Supports	Increase	Pt.Mackenzie port 1,2,5,4,3
Steve Frank (!)	Senate O	R R	For	For	Supports all listed	Supports	Increase (MSY)	1,3,5,4,2
Barry Jackson	Senate O	R R	For	Against	Supports all listed	Supports	MSY Only	2,3,4,5
Bert Sharp	Senate P	D	For	For	Supports 3	Supports	Increase (MSY)	4,1,5,3
Mike Miller	Senate Q	R R	For	For	Supports all listed	Supports	Increase (MSY)	4,3,5,1,2
Paul Chizmar	Senate Q	ALP	For	For	Supports 1,2,3,4,6	Supports	Increase (MSY)	1,4,5,3,2 RR Construction
Charlie Parr	Senate Q	D	NR	NR	No answer	No position	No answer	NR
Paul R. Miller	Senate R	Ind. R	For	For	NR	Supports	Current levels	2,1,3,5,4, Agriculture
Carroll G. Fader	Senate R	R R	For	For	Supports all listed	Supports	Increase (MSY)	1,4,2,3,5
Fran Ulmer (!)	House 1	D	For	NR	Supports 2,4,6	Supports	Less than current in SE	3,2,4
Dale Anderson	House 3	R R	For	For	Supports 1,2,3,4,6	Supports	Current levels	1,3,2,4,5
Bill Hudson (!)	House 4	R R	For	For	Supports 1,3	Supports resolution	Increase overall (MSY)	3,2,1,4,5 New investment
Ken Dunker	House 4	ALP	For	For	Supports all listed	Supports	Increase overall (MSY)	1,2,3,4,5
Charles Ramage	House 4	D	For	For	Supports 2,3,4	Supports	MSY Only	2,3,4,1,5
Sean Parnell	House 7	R R	For	For	Supports 1,2,3,4,6	No position	Increase overall	4, others ranked #2
Benn Levine	House 7	G	For	Against	NR	Oppose	Current level or decrease	2,3,4 all ranked #1
Gail Phillips	House 7	R D	For	For	Supports	Supports	Increase	1,4,2,5,3
Andy Mack	House 8	D	For	For	No answer	Supports	Increase (MSY)	2,1,5,3
Gary Davis	House 8	R	For	For	Supports 1,3,6	Supports	Increase	4,1,5,2,3
Mike Navarre (!)	House 9	D D	For	For	Supports 3,6	Supports	NR	4,oil/gas leasing, 5,1,2,3
Mark Hodgins	House 9	R R	For	For	Supports all listed	Supports	Increase	4, all others ranked #2
Bert Wagnon	House 10	D D	For	For	Supports 1,2,3,4	NR	NR	3,4,2,1,5
Joe Green	House 10	R R	For	For	Supports all listed	Supports	Increase	5,4,1,2,3
Manuel Wallace	House 10	ALP	For	For	Supports all listed	Supports	Increase (MSY)	1,4,5,3,2
Dan "Counr" Pistorresi	House 11	Ind.	For	For	Supports 1,2,3	Supports	Current level	4,2,5,1,3
Jim Nordlund	House 11	D	For	Against	Supports all listed	Supports	Increase	4,2,3,manufacturing
Norm Rokeberg	House 11	R R	For	For	Supports	NR	Increase (MSY)	5,4,3,2,1
Mark Hanley (!)	House 12	R R	For	For	Supports 1,2,3,4,6	Supports	Increase (MSY)	Russia trade 5,3,4,2,1
Gene Eldem	House 12	Ind.	For	For	Supports all listed	Supports	Current levels	1. Reduce spending
Fate Putman	House 13	D	For	For	Supports 1,2,3,6	No position	Current levels	4,2,3,1
Cynthia Toohey	House 13	R R	For	For	Supports all listed	Supports	Increase	4,1,2,3,5
Terry Martin (!)	House 14	R R	For	For	Supports 1,2,3,6	Undecided	Increase	Repeat costly regs.
Kay Brown (!)	House 15	D	For	For	Supports some Incentives	Supports w/changes	Less than current levels	3,2,4,1
Edward Young	House 16	R R	For	For	Supports 1,2,3,4,6	Supports	Increase	1,4
Eric Morrison	House 17	D	For	Against	Supports 1,3,4,6	Supports	Increase (MSY)	2,3,5
Dave Choquette (!)	House 17	Ind. R	For	For	Supports all listed	NR	Increase	1,4,5,3,2
Betty Bruckman (!)	House 18	D	For	For	Supports all listed	Supports	Decrease in most areas	3,1,4,2,5
Con Burde	House 18	R R	For	For	Supports 1,3,6	Supports	No position	3,2,1,4,5
H.A. "Buzz" Hoffman	House 18	ALP	For	For	Supports all listed	Supports	Increase (MSY)	1,4,5,3,2
Jerry Sanders	House 19	R	For	For	Supports all listed	Supports	Increase	1,4,railroads,5,2,3
Duane M. French	House 19	D	For	For	Supports 1,2,3,6	Supports	Increase overall	4,3,2,5,1
Brian Porter	House 20	R R	For	For	Supports all listed	NR	Increase	1,2,3,4,5
Pat Parnell (!)	House 20	D	For	For	Supports in concept	Supports	Increase (MSY)	4,5,1,3,2
Richard A. Burt	House 21	R D	For	For	Supports 1,2,3,4,6	Supports	Increase	1,2,5,3,4
Bettye Davis (!)	House 21	D	For	For	Supports all listed	Oppose	Increase (MSY)	1,4,3,5,2
Ramona Barnes (! )	House 22	R R	For	For	Supports all listed	Oppose	Increase (MSY)	4,3,2,5,1
Eldon Mulder	House 23	R D	For	For	Supports 1,2,3,4,6	Supports	Increase (MSY)	1,2,3,4,5
Dorothy Cox	House 24	D	For	For	Supports 1,2,3,4	Supports	Increase (MSY)	4,2,3,1,5
Pete Kott	House 24	R R	For	For	Supports all listed	Supports	Increase (MSY)	4,2,3,1,5
Glen Nicolai	House 25	R R	For	For	Supports all listed	Supports	Increase (MSY)	5,4,3,1,2
Pat Carrey (!)	House 26	D	For	For	Supports all listed	Oppose	Increase (MSY)	1,3,5,4,2
Michael Carson	House 26	ALP	For	For	NR	Supports	Increase	1,3,5,4,2
Don Tanner	House 26	R R	For	For	Supports all listed	Supports	Increase	1,2,3,4,5
Gary Parson	House 27	G	NR	Against	Supports with changes	Supports	Increase/no old growth	4,adult ed,2,3,5
Ron Larson (!)	House 27	D	For	For	Supports 1,2,3,4,6	Oppose	Increase	1,4, others ranked #3
Doyle E. Holmes	House 28	ALP	For	For	Supports all listed	NR	Increase (MSY)	1,2,4,3,5
John Davies	House 29	D	For	Against	Supports all listed	Supports	Increase overall	4,3,5,2,1
Tom Brice	House 30	D	For	Against	NR	Supports	Current level	4,5,3,2,1
Ruth Bohms	House 30	ALP	For	For	Supports 1,2	Supports	Current level	4,1,3,2,5
Wait Johnson	House 31	R R	For	For	Supports 1,2,3,5	Supports	Increase overall	2,5,1,3,4
Don I. Gray	House 32	D	For	For	Supports 1,2,3,6	NR	Current level	3,2,4,5,1
Al Vezey	House 32	R R	For	For	Supports 1,2	Supports	Increase (MSY)	1,4,5,3,2
Doug Welton	House 33	ALP	For	NR	Supports all listed	NR	Increase (MSY)	4,2,3,5, ag
Jeannette James	House 34	R	For	For	Supports all listed	Supports	Increase	1,4,5,2,3
Dean Sawyer	House 35	ALP	For	For	Supports all listed	Supports	Increase (MSY)	All listed #1
Harley Olberg	House 35	R R	For	For	Supports all listed	Supports	Increase (MSY)	1,4,5,2,3
Robert Carnahan	House 36	R	For	For	Supports all listed	Supports	Increase (MSY)	4,1,2,3,5