

The Apache logo is written in a stylized, italicized yellow font on a dark brown rectangular background. The background of the entire slide is a photograph of an offshore oil rig with a helicopter in the sky and a worker in the foreground.

Apache

APACHE CORPORATION

Alaska's Resources –
33rd Annual Resource
Development Council

November 14, 2012

John L. Hendrix



Apache

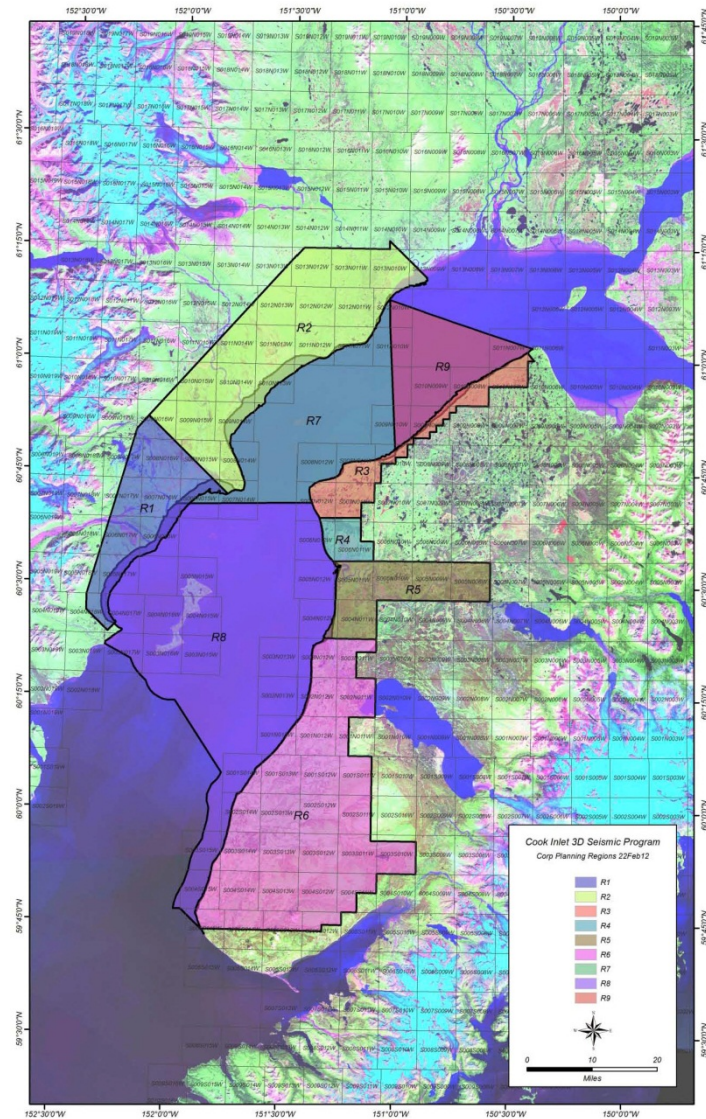
APACHE: STRONG AND INDEPENDENT

- ▶ YE 2011 proved reserves: 3 billion barrels of oil equivalent
- ▶ 3Q 2012 production: 771,000 boe/day
- ▶ 5,500 employees worldwide
- ▶ US \$35 billion market capitalization
- ▶ Member S&P 100, S&P 500
- ▶ No. 154 in Fortune 500

SIGNIFICANT POSITION IN EACH FOCUS AREA



APACHE'S COOK INLET ACREAGE



- ▶ With more than 1 million acres, Apache is the largest acreage holder in Cook Inlet
- ▶ Multi-year 3-D seismic program launched November 2011, worked continuously through September 2012
- ▶ Approximately 300 square miles acquired to date (over 200,000 acres)
- ▶ Working cooperatively with all stakeholders
- ▶ Wireless technology minimizes environmental impact
- ▶ Extensive mitigation program to avoid marine mammals
- ▶ 1 million hours worked with no lost-time accidents

APACHE ALASKA MILESTONES – 2010

- August – acquired initial acreage from Dan Donkel
- December – acquired additional acreage from Alaska Mental Health Trust

APACHE ALASKA MILESTONES – 2011

- ▶ March/April – Seismic *Technology Test* completed on West Forelands
- ▶ June – acquired 500,000 acres additional acreage through State Oil and Gas Lease Sale
- ▶ July – awarded multi-year seismic contract to SAExploration
- ▶ Permits issued by local, State and Federal agencies for Land and Intertidal seismic exploration – West Side of Cook Inlet
- ▶ December – signed agreement with Native Village of Tyonek

APACHE ALASKA MILESTONES – 2012

- Acquired additional acreage through State Oil and Gas Lease Sale
- Seismic and exploration agreements signed with Alaska Native Corporations
 - Cook Inlet Region Inc. (CIRI)
 - Ninilchik Native Association
 - Salamatof Native Association
 - Tyonek Native Corporation

(continued)

APACHE ALASKA MILESTONES – 2012

- Apache donates seismic data to University of Alaska, Fairbanks and Division of Geological & Geophysical Services for earthquake research
- September Patterson Rig 191 arrives Alaska from North Dakota
- Late September - Seismic bridges Cook Inlet from Tyonek to Nikiski
- Approximately 317 square miles (more than 200,000 acres) of data acquired

(continued)

APACHE ALASKA MILESTONES – 2012

- ▶ Q4 – spud first well, Kaldachabuna #2
- ▶ Apache Rainbow Challenge raises money for Tustumena 200 Sled Dog Race

GROW THRU THE DRILL BIT!



FIRST WELL: WEST SIDE OF COOK INLET



- Spud planned for Q4 2012
- Estimate 100 people employed during drilling
- Rig secured from the Bakken play in North Dakota
- Also brought back experienced Alaskans from North Dakota

APACHE ALASKA'S COMMUNITY OUTREACH



- ▶ 1ST Annual Apache Rainbow Challenge for Tustumena 200
- ▶ Tebughna Foundation
- ▶ CIRI Foundation
- ▶ HOPP Homer Playground
- ▶ Pratt Museum

APACHE: EXPLORING WHAT'S POSSIBLE

- ▶ Questions?
- ▶ Thank you.