



Statoil



# The Norwegian Experience - Statoil In Alaska

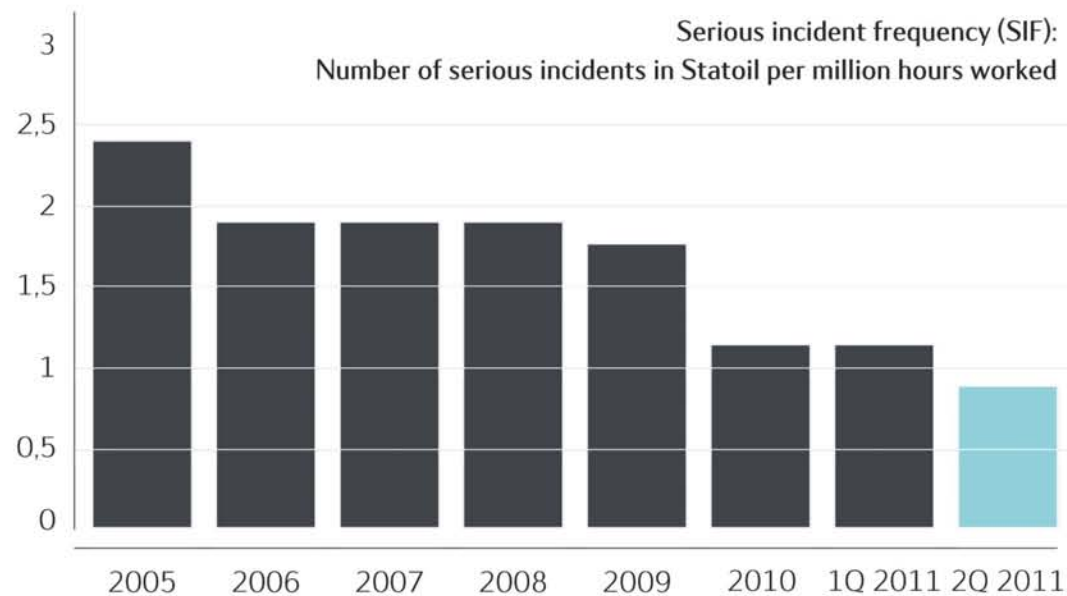
RDC 2011, Lars Andreas Sunde, Head of Statoil Exploration Alaska

# Where we are

Statoil has high ambitions for international growth and is already present in 34 countries around the world.

<a href="#"><u>Algeria</u></a>	<a href="#"><u>Iraq</u></a>
<a href="#"><u>Angola</u></a>	<a href="#"><u>Ireland</u></a>
<a href="#"><u>Azerbaijan</u></a>	<a href="#"><u>Kazakhstan</u></a>
<a href="#"><u>Bahamas</u></a>	<a href="#"><u>Libya</u></a>
<a href="#"><u>Belgium</u></a>	<a href="#"><u>Mexico</u></a>
<a href="#"><u>Brazil</u></a>	<a href="#"><u>Mozambique</u></a>
<a href="#"><u>Canada</u></a>	<a href="#"><u>Netherlands</u></a>
<a href="#"><u>China</u></a>	<a href="#"><u>Nigeria</u></a>
<a href="#"><u>Cuba</u></a>	<a href="#"><u>Norway</u></a>
<a href="#"><u>Denmark</u></a>	<a href="#"><u>Russia</u></a>
<a href="#"><u>Egypt</u></a>	<a href="#"><u>Singapore</u></a>
<a href="#"><u>Faroe Islands</u></a>	<a href="#"><u>Tanzania</u></a>
<a href="#"><u>Georgia</u></a>	<a href="#"><u>Turkey</u></a>
<a href="#"><u>Germany</u></a>	<a href="#"><u>United Arab Emirates</u></a>
<a href="#"><u>India</u></a>	<a href="#"><u>United Kingdom</u></a>
<a href="#"><u>Indonesia</u></a>	<a href="#"><u>USA</u></a>
<a href="#"><u>Iran</u></a>	<a href="#"><u>Venezuela</u></a>

# Health, safety and the environment (HSE)



Our ambition is to be the industry leader in HSE. We must therefore improve in this area, and HSE must be the first priority in everything we do. Should a conflict arise, safety must always take precedence over production.



President and CEO Helge Lund



# Key figures

Equity production

**1,89 million**

barrels of oil equivalents per day

About

**22 billion**

Barrels of oil equivalents in resources

Market capitalization of about

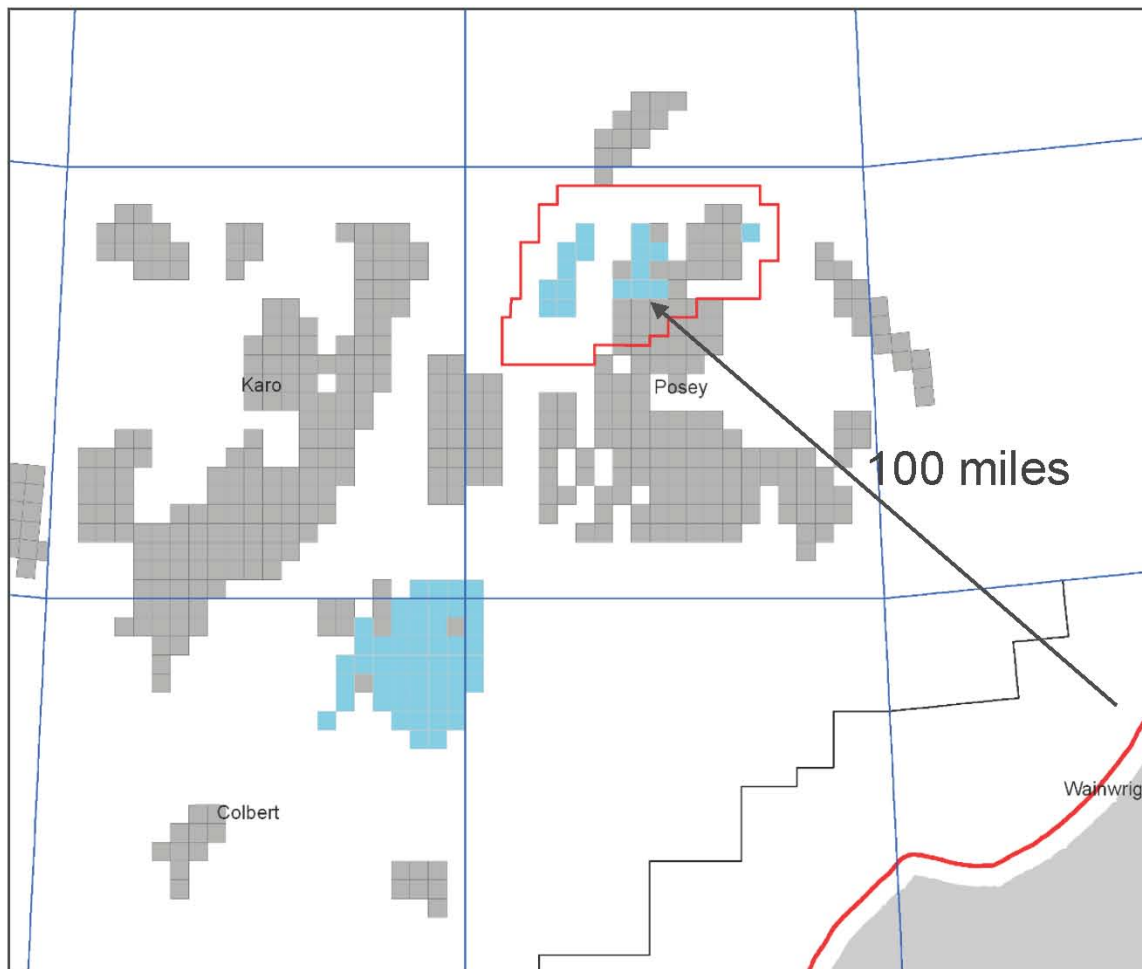
**USD 80 billion**



# Going North, Part of our Ambition



# Statoil in Alaska-16 operated leases and 50 non-operated (CoP)

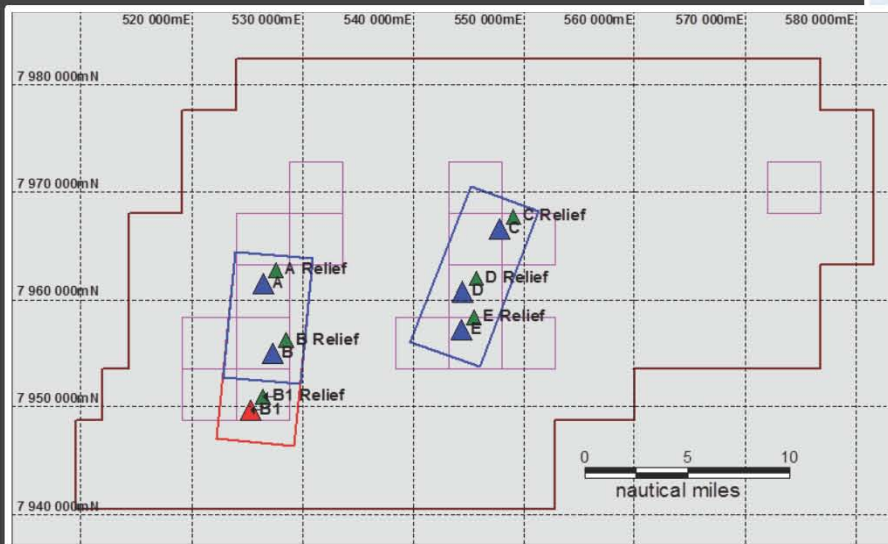


# 2011 Operation

August September 2011


Shallow seismic survey:

Planned 1600 line miles



Geotechnical coring survey:

Planned 1500 ft of borehole length

All work inside permit area\* 

\*One core of 12 ft length obtained in CoP/Statoil area outside this map



Gardline -Duke



Fugro Synergy



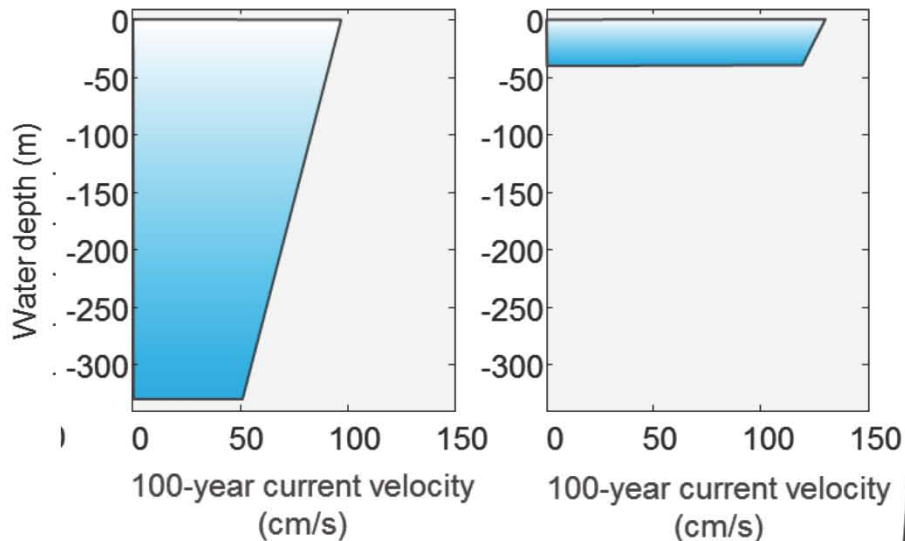
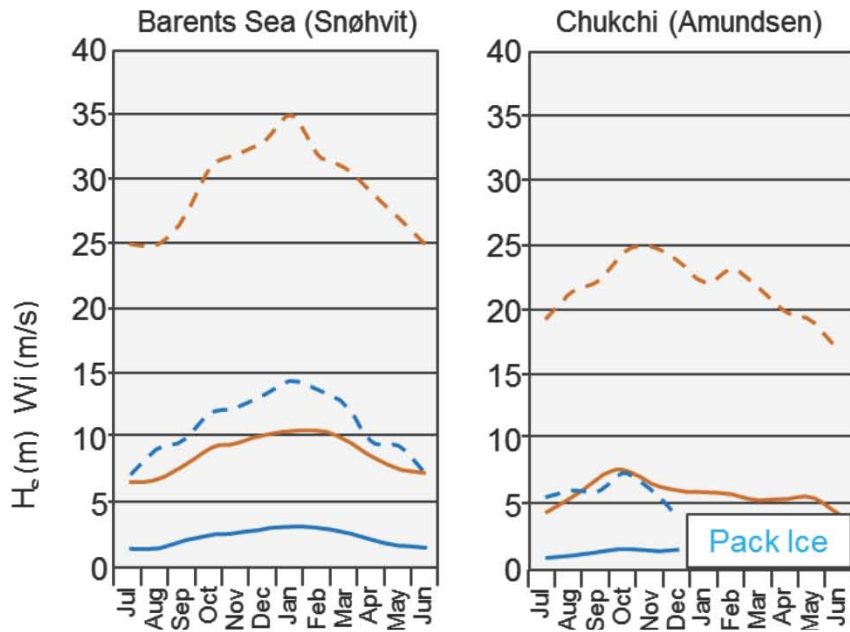


Operating in  
harsh  
environments



## Comparison of Water Depth and Met-Ocean Data in the Arctic

- The Barents Sea has 50 % higher winds and 125% higher waves than the Chukchi
- The water depth in the Barents is 8 times deeper than the Chukchi
- Barents Sea exploration drilling is year around
- Chukchi exploration drilling will be in OWS
- The currents are 30% higher in the Chukchi than in the Barents Sea



--- Wind speed 100yr (Wi)   
 --- Wave Height 100yr (Hs)   
 --- Wind speed Avg (Wi)   
 --- Wave Height Avg (Hs)



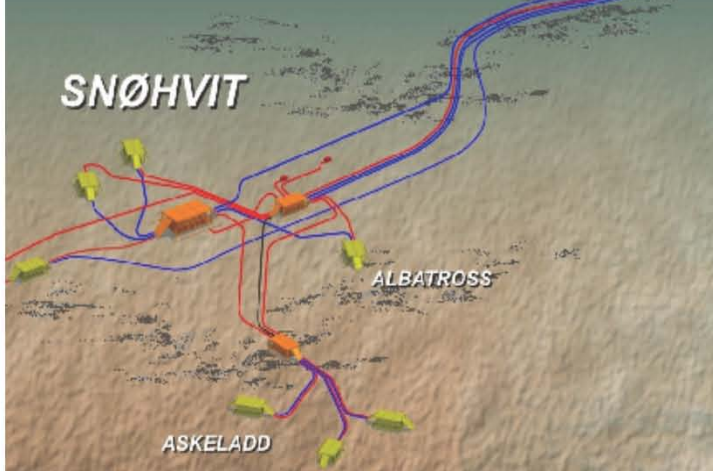


# Snøhvit (Snow White) arctic offshore development

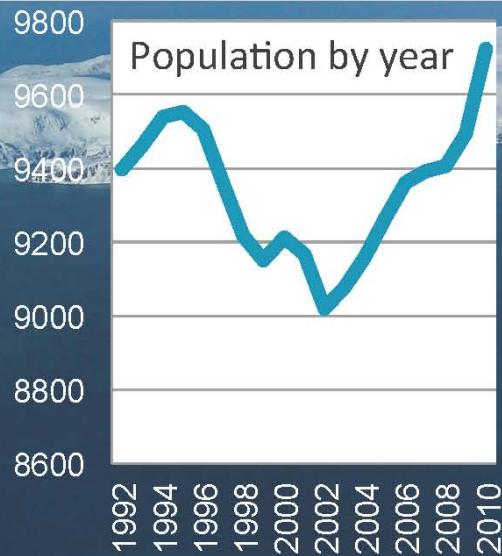
- Remotely controlled subsea development
- No installations on the surface
- No toxic discharges to the sea
- Re-injection of carbon dioxide (CO<sub>2</sub>)



MELKØYA







## Project onshore facilities



Hammerfests befolkning øker voldsomt:  
**Passerer 10.000**

The deputy Mayor of Hammerfest:  
*- We have no other explanation than  
 Snøhvit*





**November 2011**  
A hurricane and an experience for life  
**Thank you Point Hope**



Thank you for your attention