



Brooks Range Petroleum



DISCLAIMER

The accounts and descriptions of the following events are true.

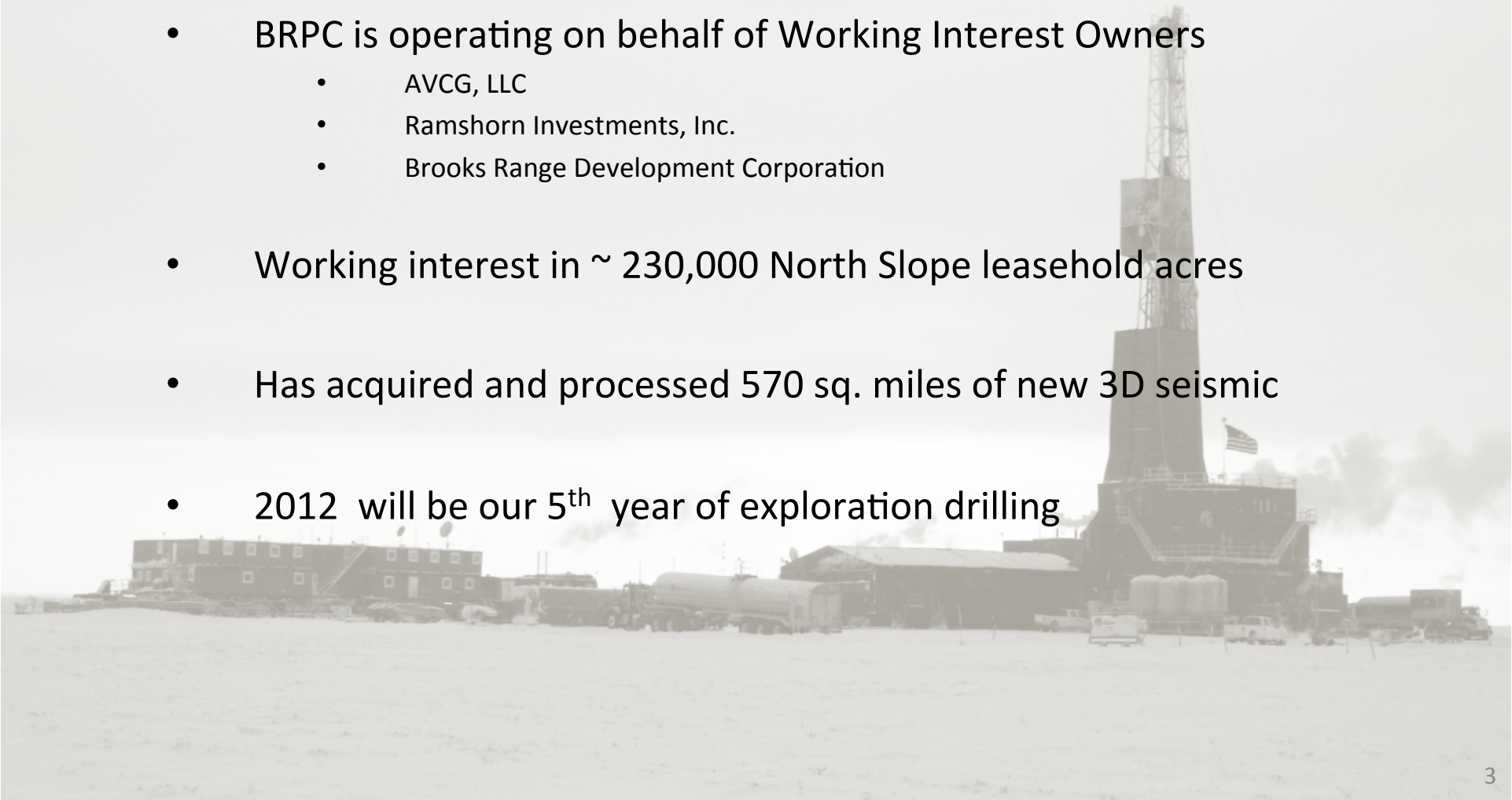
Some of the names have been excluded to protect their identity.

No one was harmed during this enactment, other than MY own personal pride !!!!



Highlights

- BRPC is a solely owned subsidiary of AVCG, LLC
- BRPC is operating on behalf of Working Interest Owners
 - AVCG, LLC
 - Ramshorn Investments, Inc.
 - Brooks Range Development Corporation
- Working interest in ~ 230,000 North Slope leasehold acres
- Has acquired and processed 570 sq. miles of new 3D seismic
- 2012 will be our 5th year of exploration drilling





Alaska History



- Form Alaska Venture Capital Group
- Acquire acreage at lease sale / trades
- Begin forming regional studies
- Establish political/ land/ service relationships

- Formation operating entity of Brooks Range Petroleum Company
- Attract working interest partners
- Drill first two wells (North Shore #1 / Sak River #1)
- Acquire North Shore 3-D

- Acquire western acreage (Putu & SMU) putting company of 268,000 gross acres
- Drill Tofkat #1, A & B sidetracks
- Shoot Big Island 3-D
- Unitized Beechey Point

- Drill N. Tarn
- Unitize acreage with development potential
- High grade portfolio
- Focus on development opportunity



North Slope Strategy

- ✓ **Balanced Management Team**
- ✓ **Maintain balanced exploration portfolio**
- ✓ **Apply best technology and practices**
- ✓ **Implement lower cost, independent inspired development strategies; shorten cycle times**
- ✓ **Be safe and environmentally responsible**

AVCG, LLC

www.avcg-llc.com

8100 E 22nd Street North, Bldg #1100
Wichita, Kansas 67226

Ken Thompson - Managing Director
C. Edger Dunne - Exec. Managing Member
David L. Murfin - Managing Member
John Shawver - Managing Member
Michael D. Carney - Managing Member

Brooks Range Petroleum Corporation

www.brooksrangepetro.com

510 L Street, Suite 601
Anchorage, Alaska 99501

John J. "Bo" Darrah - President/CEO
Bart Armfield - Chief Operating Officer
Larry Vendl - VP Exploration
Doug Hastings - Sr. Geo-science Advisor
Larry Smith - Chief Geophysicist
Jim Winegarner - VP Land & External Affairs
Mark Wiggin - Engineering & Development Mgr.
Tom Habermann - Controller

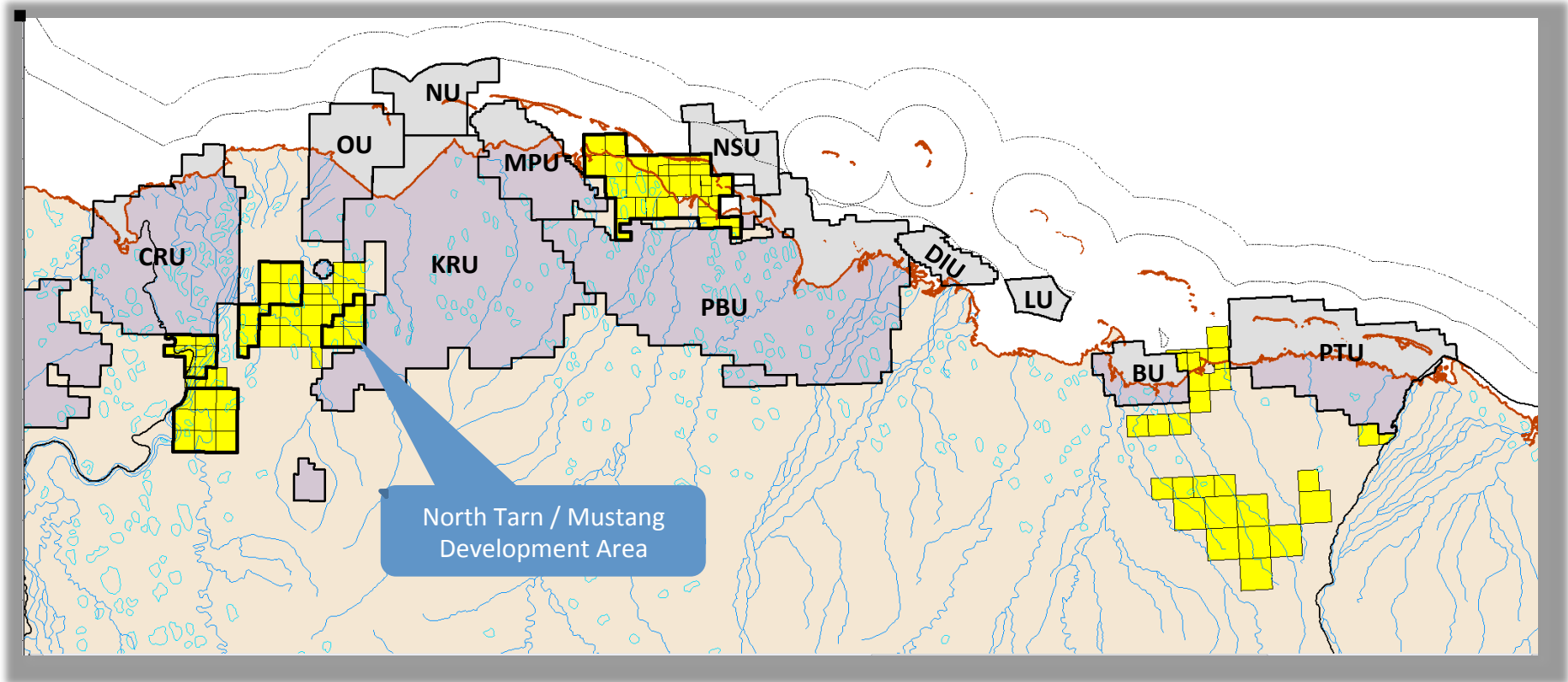


Current North Slope Lease Position

Western

Central

Eastern



Gross North Slope ~ 230,000 acres

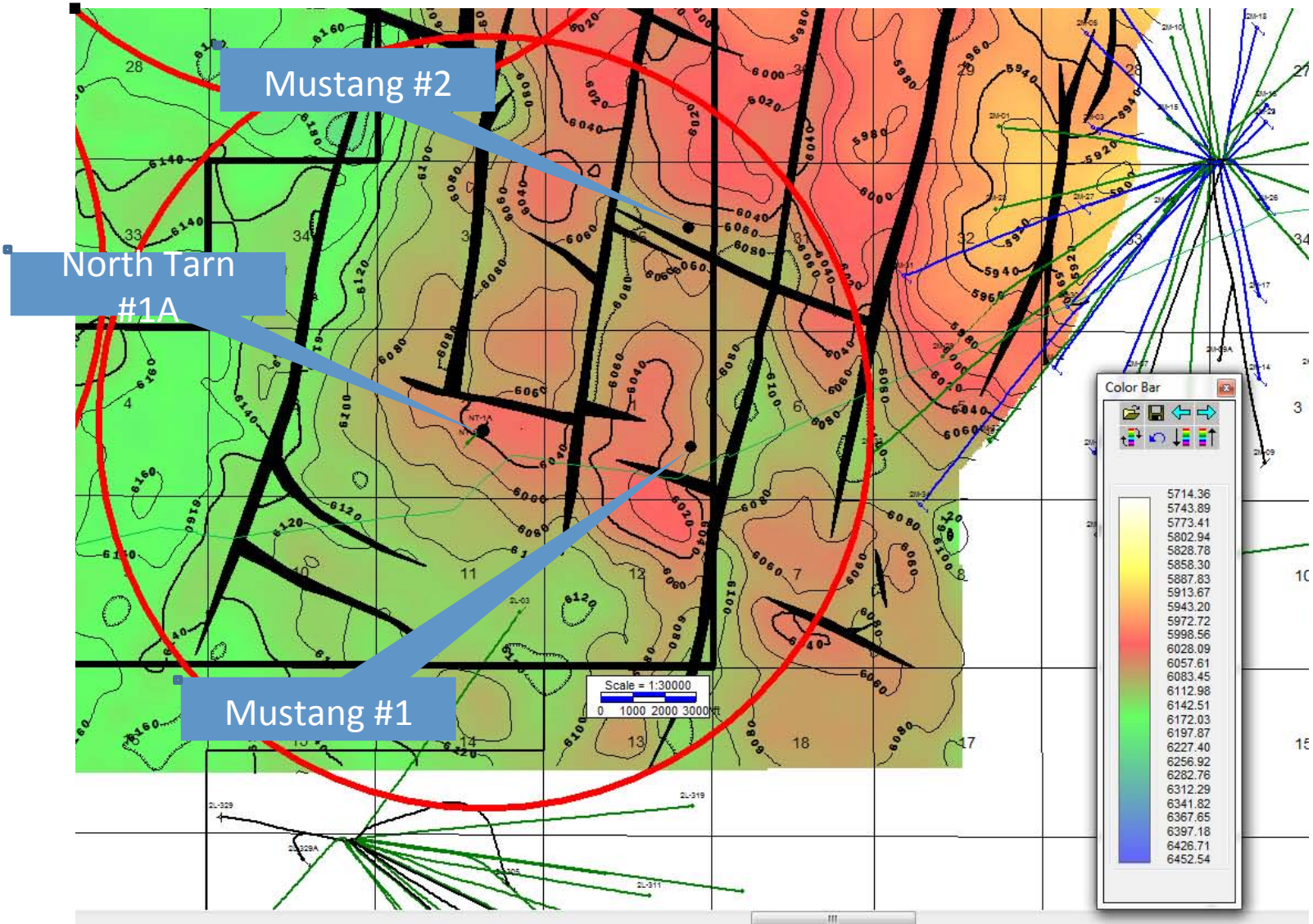


2012 Activity Plan

- Construct ice road and pad off 2 M pad in SW corner of KRU
- Mobilize Nabors 7 ES and 2 camps 100 bed occupancy
- Drill appraisal wells (120 day project window)
 - North Tarn # 1A
 - Deepen through Kuparuk "C"
 - Set casing & complete
 - Perform flow test, drawdown and build-up
 - Mustang # 1
 - Mustang # 2
- Conduct gravel exploration project
- Progress development permitting and facility design



Drilling Appraisal Plan



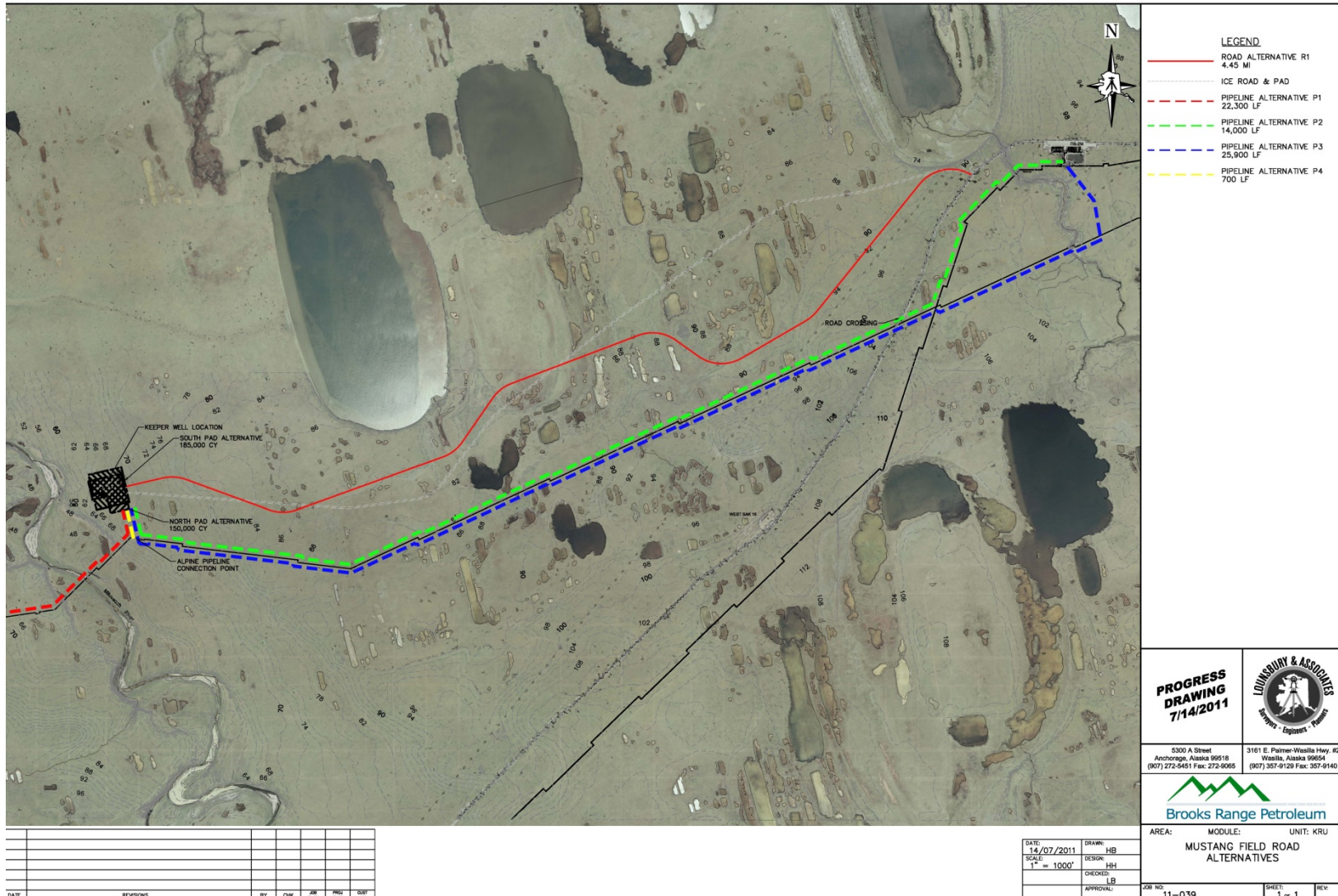


Gravel Exploration Area





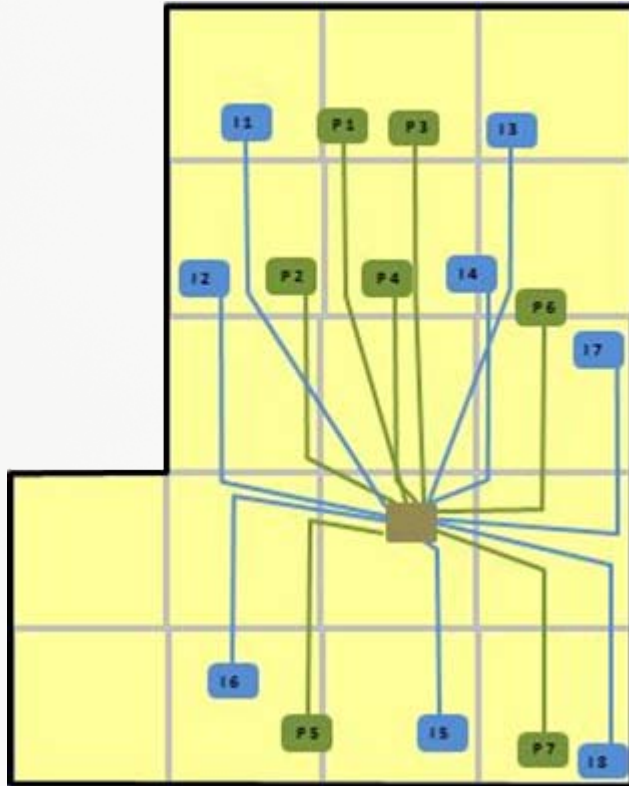
Proposed Mustang Pad/Road/Pipeline Location



DATE: 14/07/2011	DRAWN: HB	AREA:	MODULE:	UNIT:	KRU
SCALE: 1" = 1000'	DESIGN: BH	MUSTANG FIELD ROAD ALTERNATIVES			
	CHECKED: LR				
APPROVAL:		SHEET: 1 - 1			



Mustang Development Plan / Timeline



4.5 miles gravel access & production pad

700 ft. single phase pipeline to Alpine CC

10,000 BOPD modular process facility

15 total wells - 7 producers - 8 injectors

2012

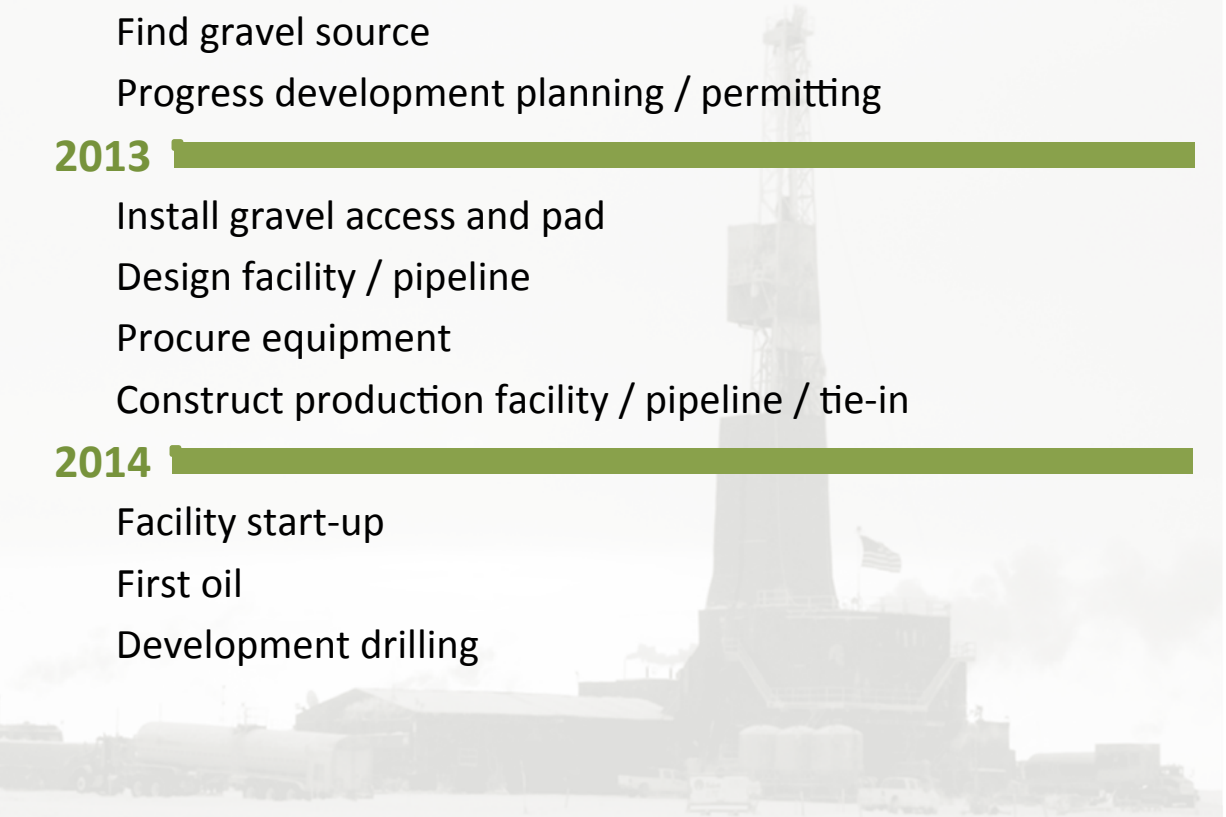
- Complete well / reserves appraisal
- Find gravel source
- Progress development planning / permitting

2013

- Install gravel access and pad
- Design facility / pipeline
- Procure equipment
- Construct production facility / pipeline / tie-in

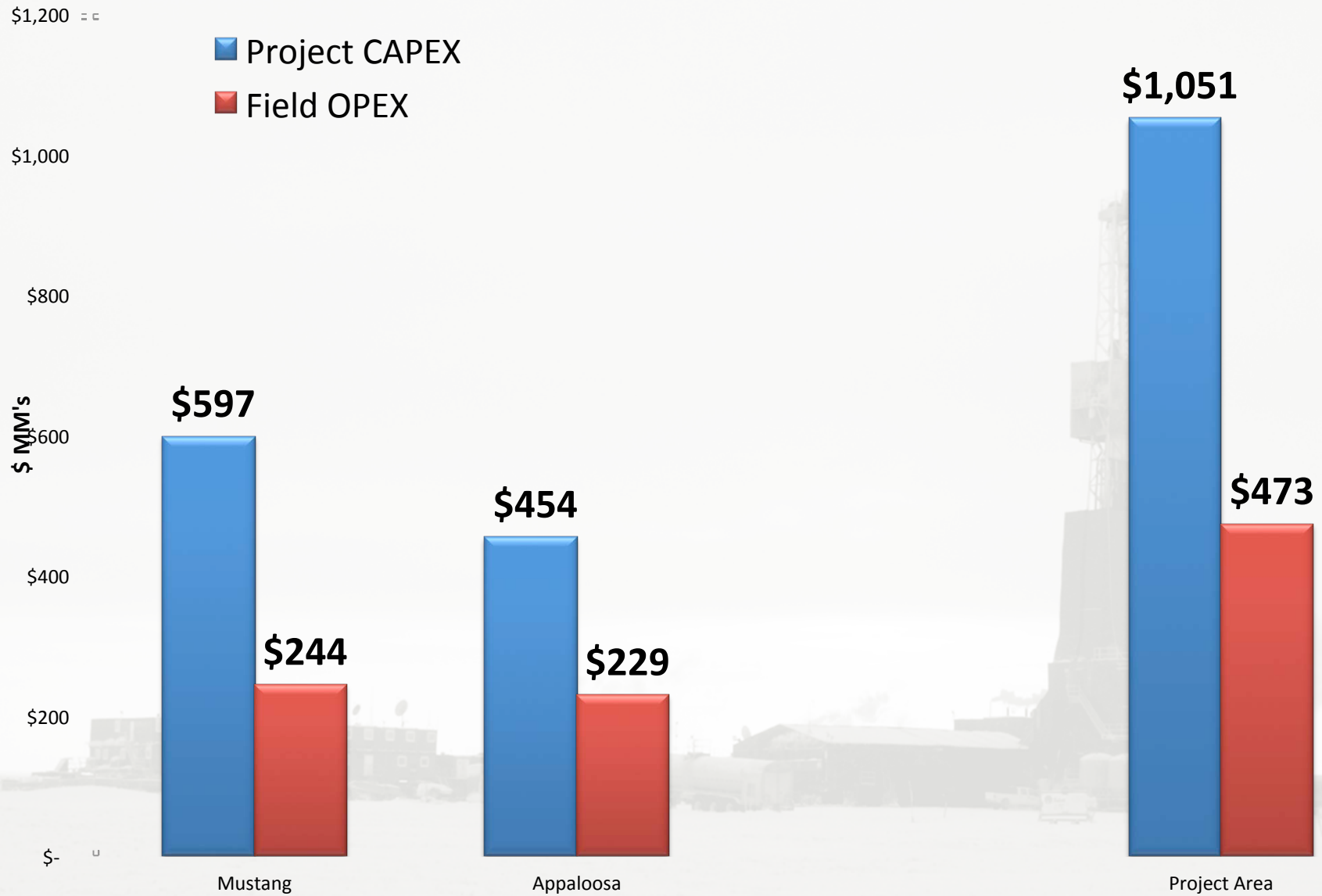
2014

- Facility start-up
- First oil
- Development drilling



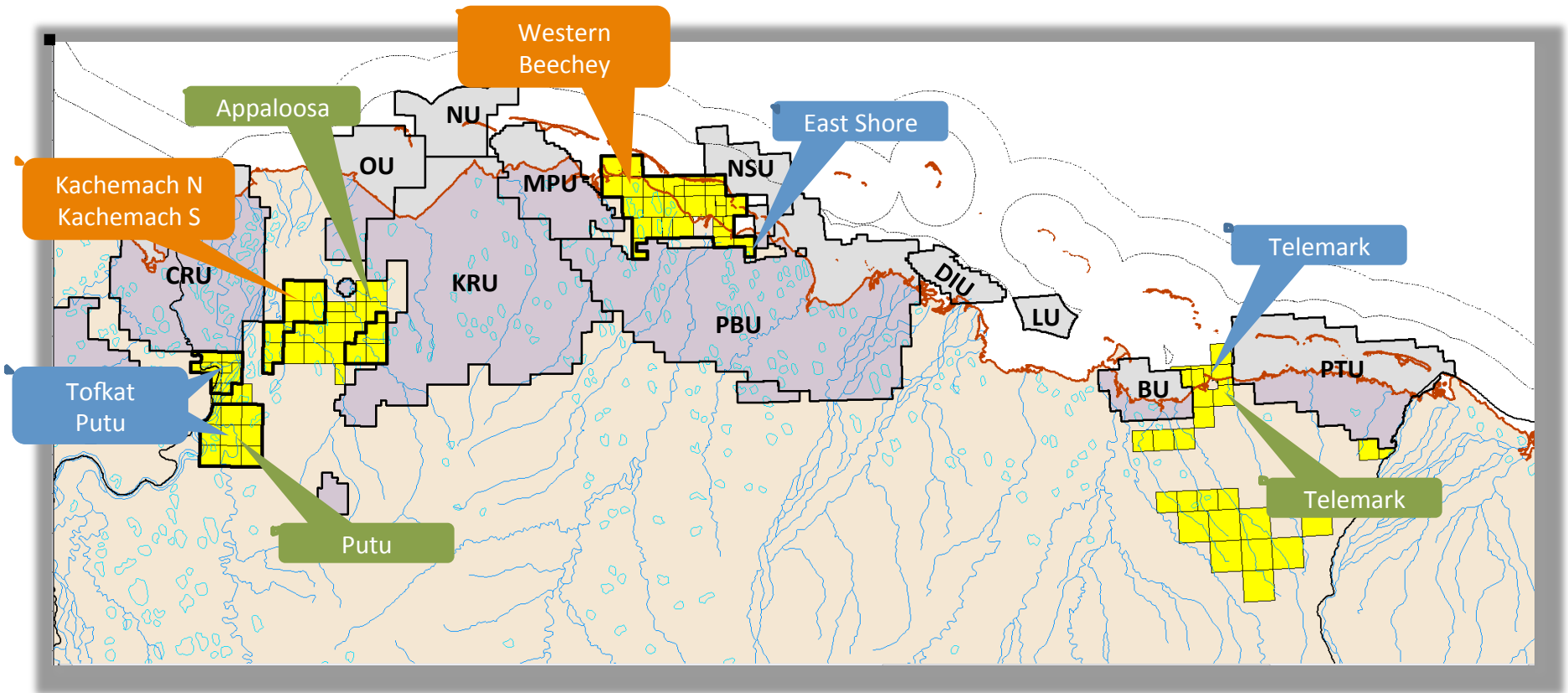


Budget Impacts





Future Exploration / Development Planning



- 2013
- 2014
- 2015



North Slope Production History

2,500,000

2,000,000

1,500,000

1,000,000

500,000

1977 1979 1981 1983 1985 1987 1989 1991 1993 1995 1997 1999 2001 2003 2005 2007 2009 2011 2013 2015 2017 2019 2021 2023 2025 2027 2029 2031 2033 2035 2037 2039 2041 2043 2045 2047 2049





Where are we Now

