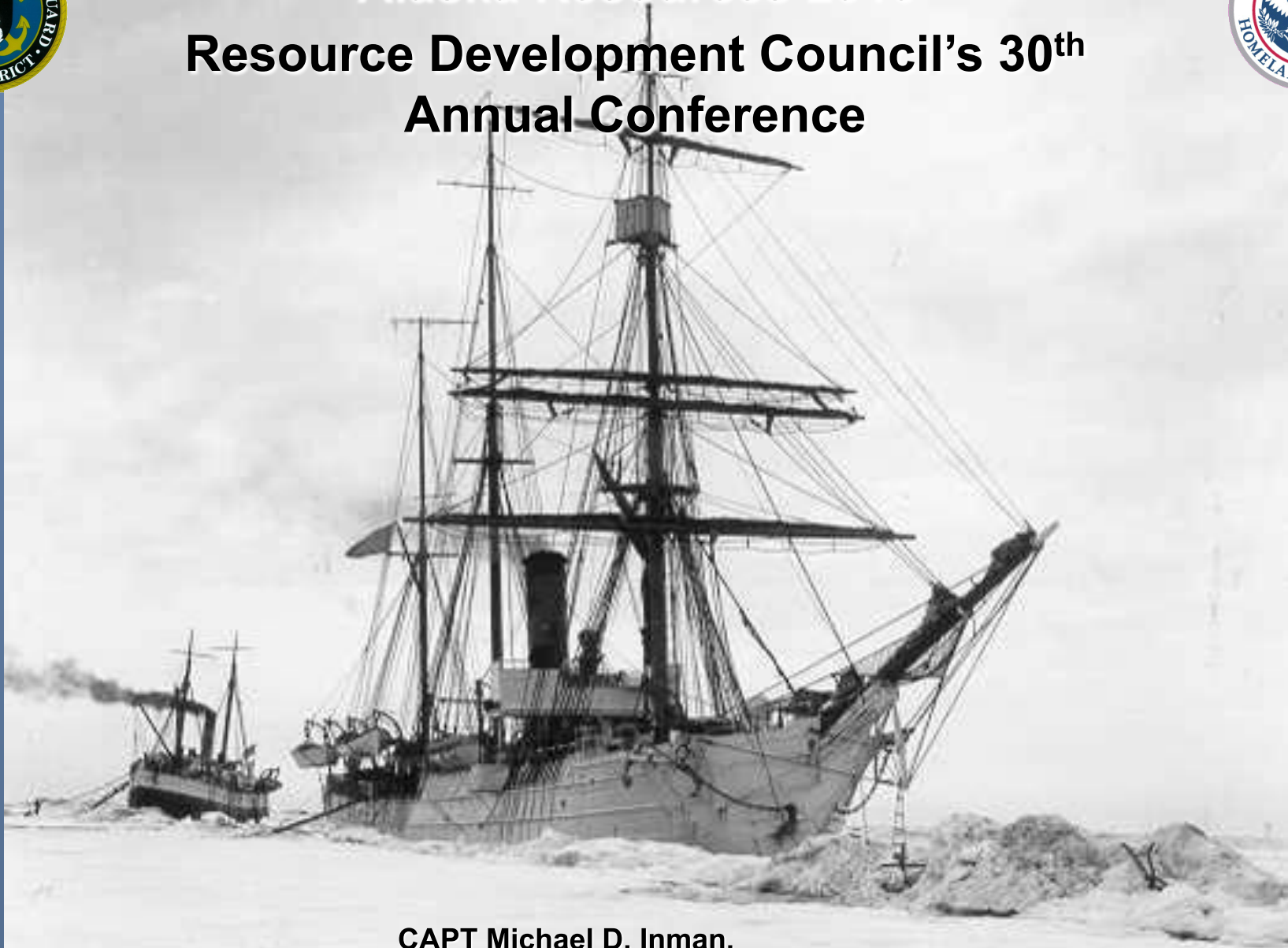




# Alaska Resources 2010 Resource Development Council's 30<sup>th</sup> Annual Conference



**CAPT Michael D. Inman,  
Chief of Response, 17<sup>th</sup> Coast Guard District**

RDS



# US Arctic Policy Goals



- Meet National & homeland security needs
- Protect the Arctic environment & conserve it's biological resources
- Ensure that natural resource mgmt & economic development in the region is environmentally sustainable
- Strengthen cooperation among Arctic nations
- Involve indigenous communities in decisions that affect them
- Enhance scientific monitoring & research

THE WHITE HOUSE

Office of the Press Secretary

For Immediate Release

January 12, 2009

January 9, 2009

NATIONAL SECURITY PRESIDENTIAL DIRECTIVE/NSPD -- 66  
HOMELAND SECURITY PRESIDENTIAL DIRECTIVE/HSPD -- 25

MEMORANDUM FOR THE VICE PRESIDENT  
THE SECRETARY OF STATE  
THE SECRETARY OF THE TREASURY  
THE SECRETARY OF DEFENSE  
THE ATTORNEY GENERAL  
THE SECRETARY OF THE INTERIOR  
THE SECRETARY OF COMMERCE  
THE SECRETARY OF HEALTH AND HUMAN SERVICES  
THE SECRETARY OF TRANSPORTATION  
THE SECRETARY OF ENERGY  
THE SECRETARY OF HOMELAND SECURITY  
ASSISTANT TO THE PRESIDENT AND  
CHIEF OF STAFF  
ADMINISTRATOR OF THE ENVIRONMENTAL PROTECTION  
AGENCY  
DIRECTOR OF THE OFFICE OF MANAGEMENT AND BUDGET  
DIRECTOR OF NATIONAL INTELLIGENCE  
ASSISTANT TO THE PRESIDENT FOR NATIONAL SECURITY  
AFFAIRS  
COUNSEL TO THE PRESIDENT  
ASSISTANT TO THE PRESIDENT AND DEPUTY NATIONAL  
SECURITY ADVISOR FOR INTERNATIONAL ECONOMIC  
AFFAIRS  
ASSISTANT TO THE PRESIDENT FOR HOMELAND SECURITY  
AND COUNTERTERRORISM  
CHAIRMAN, COUNCIL ON ENVIRONMENTAL QUALITY  
DIRECTOR OF THE OFFICE OF SCIENCE AND TECHNOLOGY  
POLICY  
CHAIRMAN OF THE JOINT CHIEFS OF STAFF  
COMMANDANT, U.S. COAST GUARD  
DIRECTOR, NATIONAL SCIENCE FOUNDATION

SUBJECT: , Arctic Region Policy

## I. PURPOSE

A. This directive establishes the policy of the United States with respect to the Arctic region and directs related implementation actions. This directive supersedes Presidential Decision Directive/NSC-26 (PDD-26; issued 1994) with respect to Arctic policy but not Antarctic policy; PDD-26 remains in effect for Antarctic policy only.

B. This directive shall be implemented in a manner consistent with the Constitution and laws of the United States, with the obligations of the United States under the treaties and other international agreements to which the United States is a party, and with customary international law as recognized by the United States, including with respect to the law of the sea.

RDS





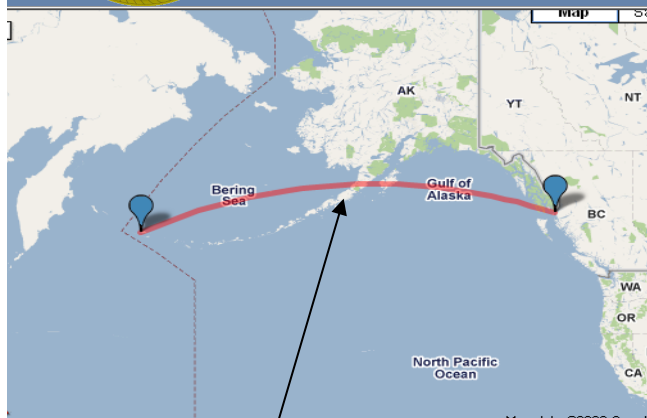
# Arctic Lexicon



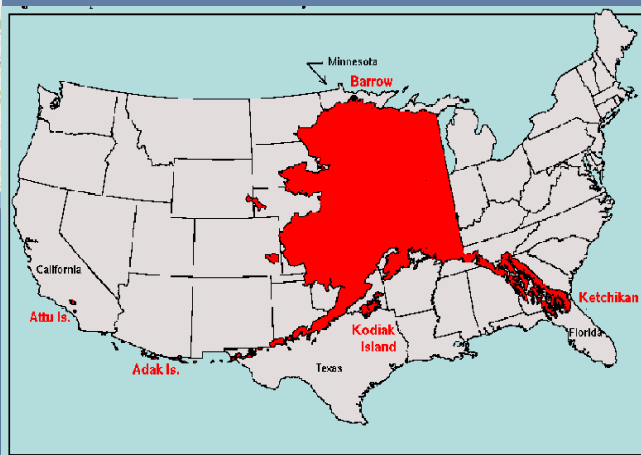
ALL THREATS ALL HAZARDS  
ALWAYS READY



# Alaskan Distances

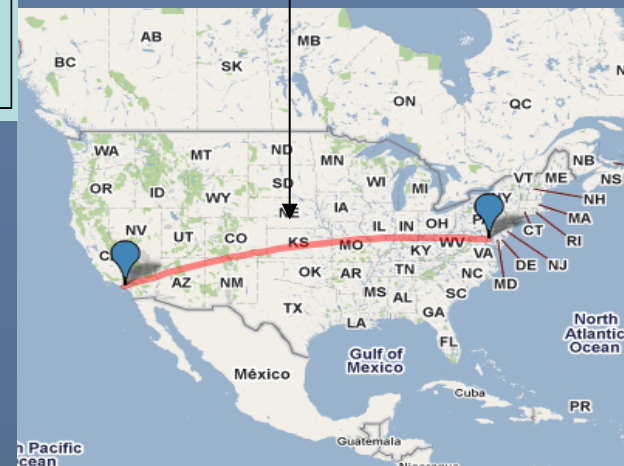


Attu to Ketchikan @ 2300 miles



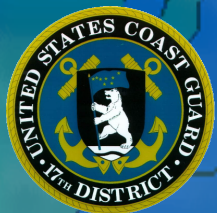
Self Rescue

DC to LA @ 2300 miles

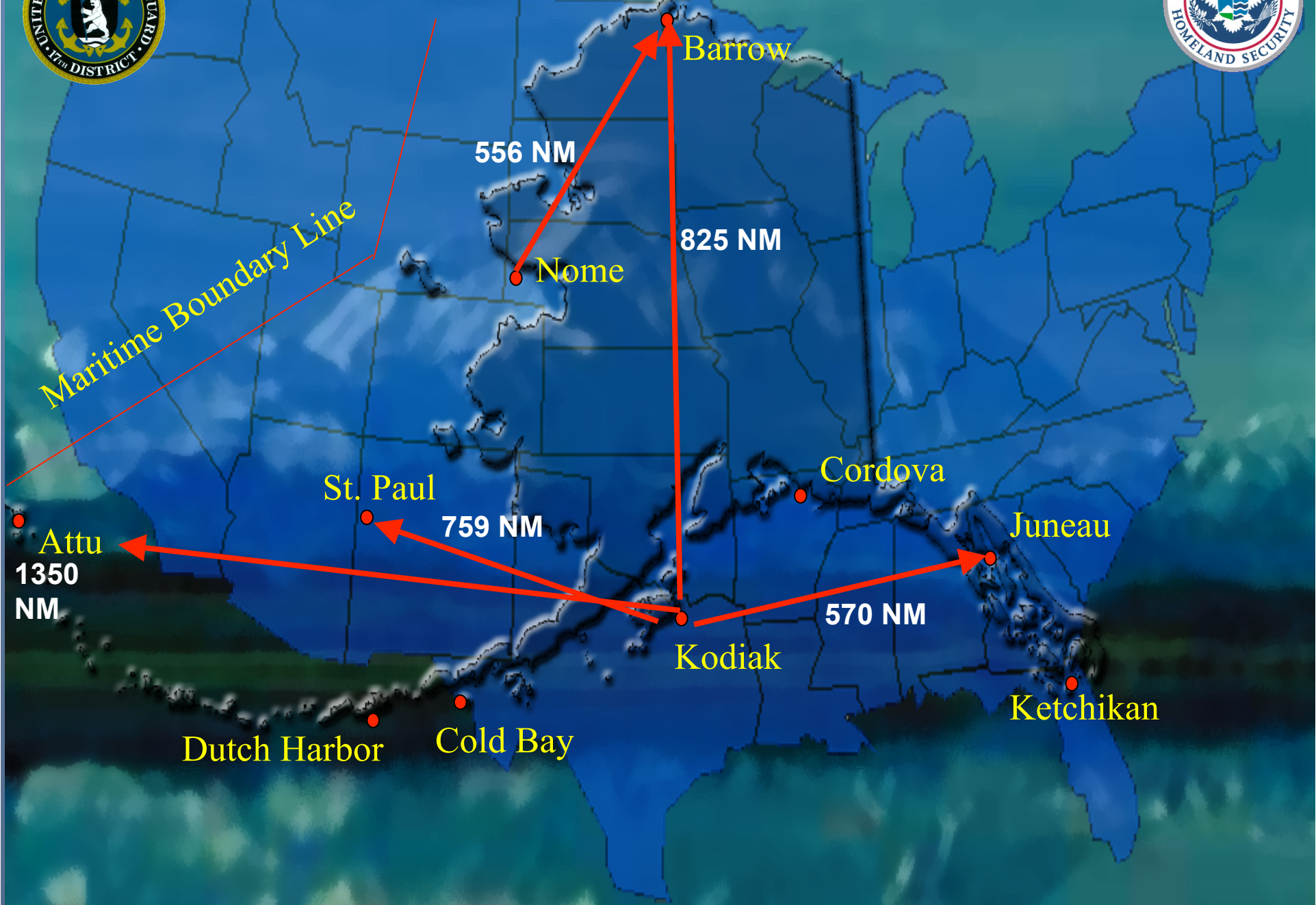


ALL THREATS ALL HAZARDS  
ALWAYS READY



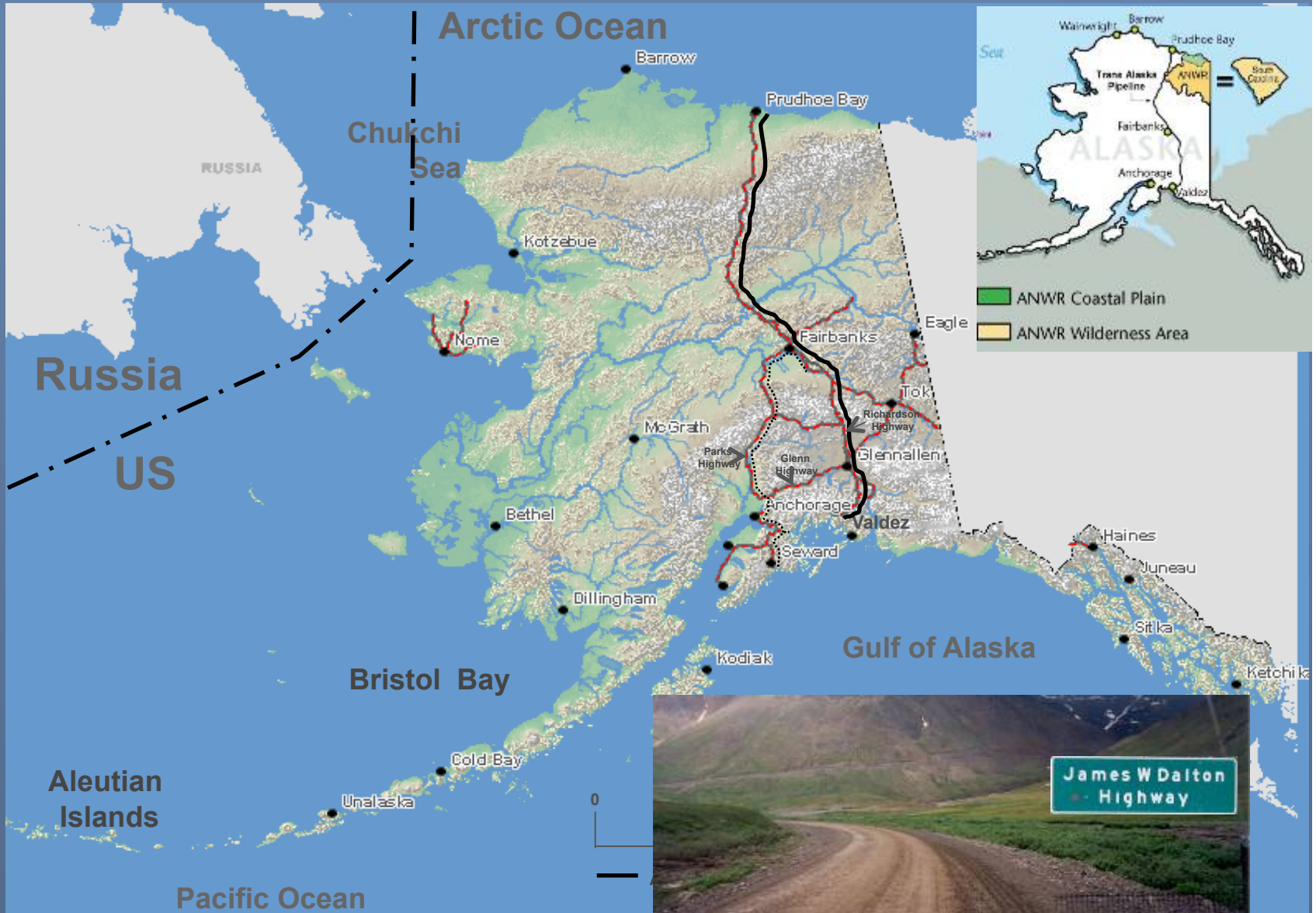


# Alaska Challenges





# Alaska Infrastructure



Russia  
US

Arctic Ocean

Chukchi Sea

Prudhoe Bay

Kotzebue

Nome

Fairbanks

Eagle

McGrath

Parks Highway

Glenn Highway

Richardson Highway

Glennallen

Anchorage

Valdez

Bethel

Dillingham

Kodiak

Gulf of Alaska

Haines

Juneau

Sitka

Ketchikan

Bristol Bay

Cold Bay

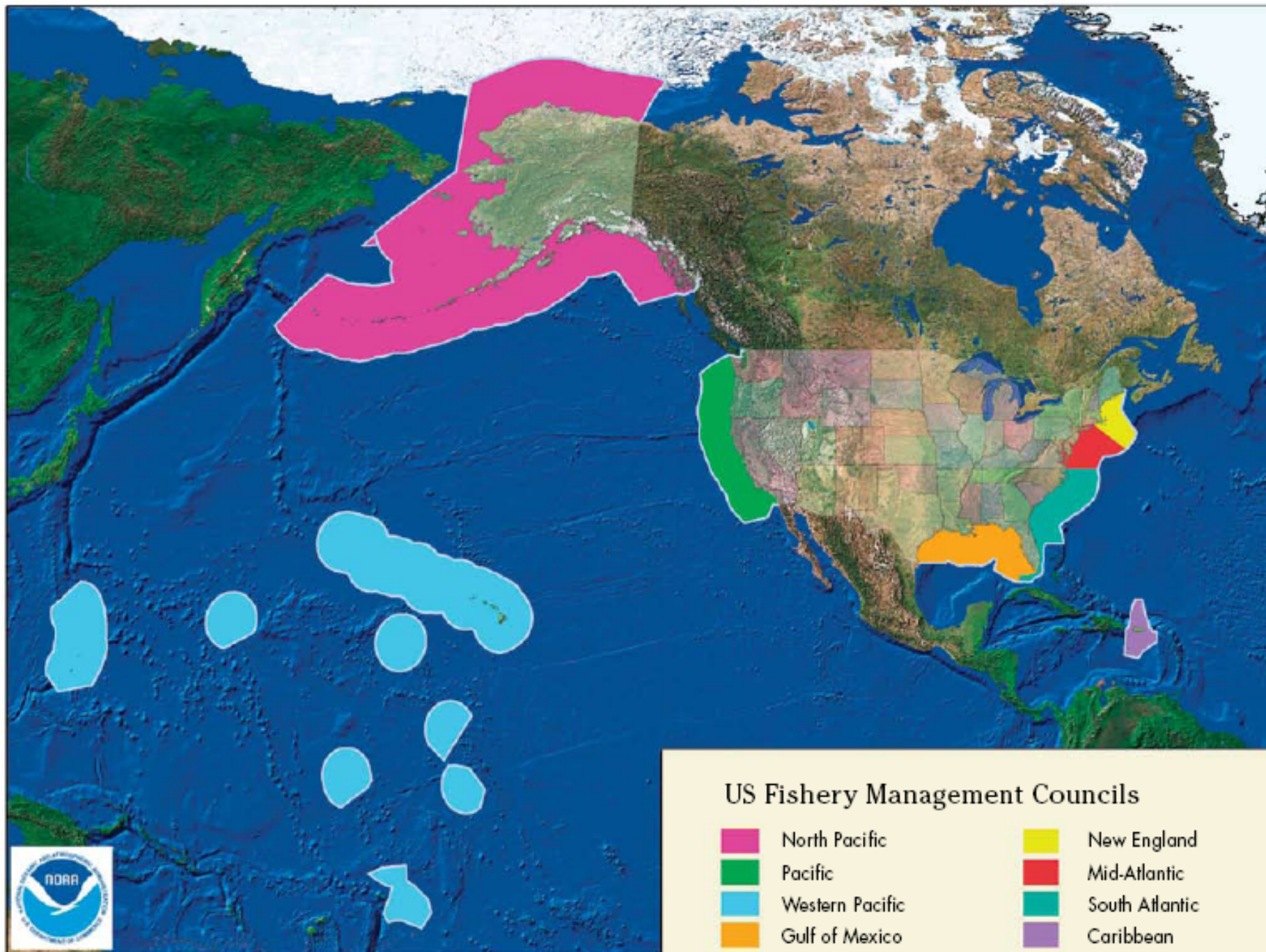
Aleutian Islands

Unalaska









Pacific Ocean







### US Fishery Management Councils

- |   |                 |   |                |
|---|-----------------|---|----------------|
|  | North Pacific   |  | New England    |
|  | Pacific         |  | Mid-Atlantic   |
|  | Western Pacific |  | South Atlantic |
|  | Gulf of Mexico  |  | Caribbean      |

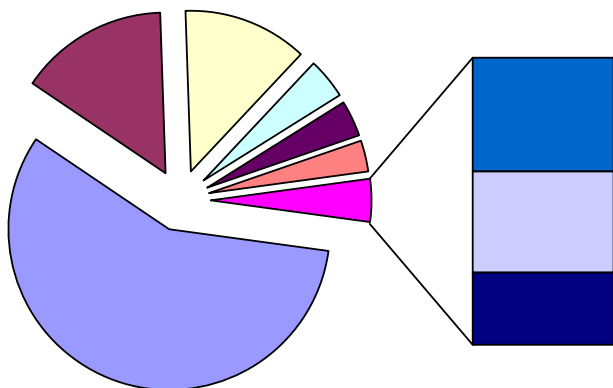




# Data from Fisheries of the US – 2008 (NMFS)

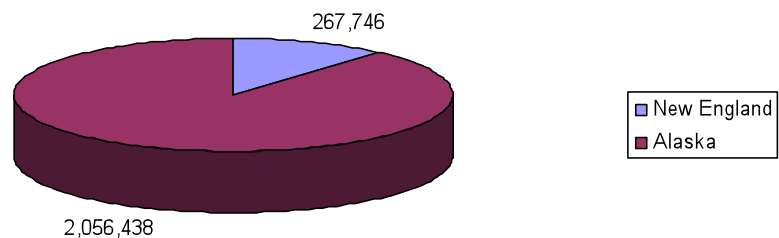


### 2008 Landings by Quantity

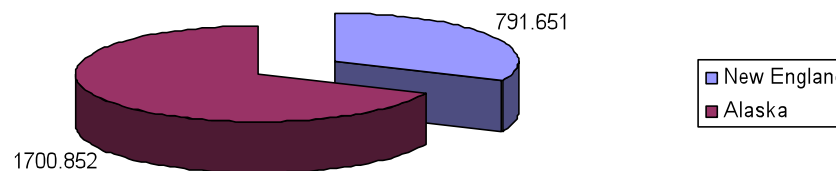


- GOA ports total
- New Bedford
- Gloucester
- Point Judith
- Portland
- Rockland
- Stonington
- Provincetown-Chatham
- Boston

### 2008 Commercial Landings in Metric Tons



### 2008 Commercial Landings in Millions of USD







UNCLASSIFIED



# Northern Alaskan Ports

- Facilities north of Dutch Harbor are minimal
  - Shallow draft
  - Fuel availability
  - Repair infrastructure

## Port of Nome

## Port of Dutch Harbor



2 Docks:  
 200' 22.5' draft  
 190' 22.5' draft

Medium Endurance Cutters and Smaller



- Five City owned marine facilities: Full Service Facility
- USCG Dock
- Unalaska Marine Center (UMC) Dock
- Spit Dock
- Light Cargo Dock (LCD)
- Robert Storrs International Small Boat Harbor

UNCLASSIFIED

Imagery Date: Sep 13, 2005

53°53'51.94" N 166°31'32.31" W elev 0 ft

©2005 Google

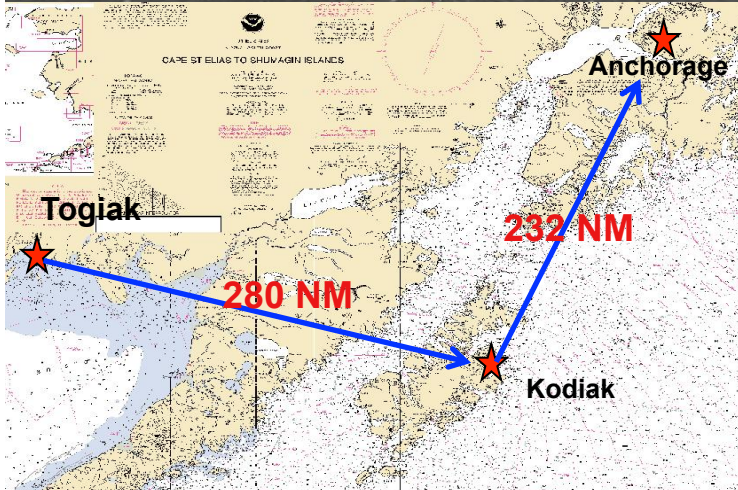
Eye alt 6863 ft



# Typical Cargo Ops in the Arctic and Western Alaska



Crowley Barge Stranded Aground



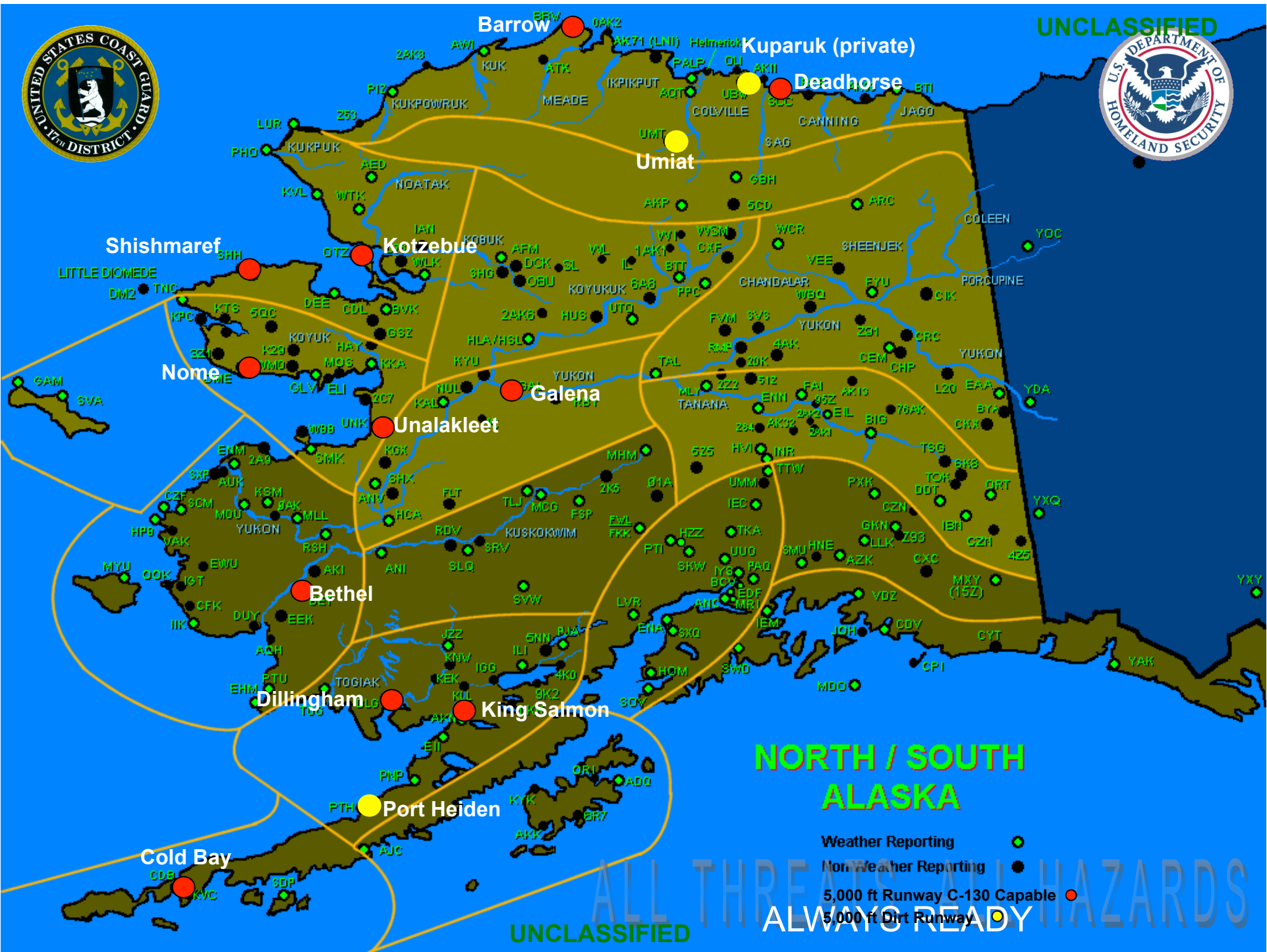
UNCLASSIFIED







UNCLASSIFIED



# NORTH / SOUTH ALASKA

- Weather Reporting ●
- Non Weather Reporting ●
- 5,000 ft Runway C-130 Capable ●
- 5,000 ft Dirt Runway ●

ALL THREATS ARE HAZARDS  
ALWAYS READY

UNCLASSIFIED



**North Pole C-130 Flight Oct 2007**

**Arctic Domain Awareness (ADA) flights started in 2007**

**Twice monthly flights Mar-Dec**

**ALL THREATS ALL HAZARDS**  
ALWAYS READY



# Arctic Ops Summer



- Arctic Domain Awareness
- Cutter Operations
  - HEALY, POLAR SEA, SPAR, HICKORY
- Tailored Force Package Deployments to Prudhoe Bay and Barrow
- Community Engagement
- SAR Exercise





# Community Outreach

(Applied Diversity for Operational Effect)



- Dialogue with Northern and Western Alaskan Communities & Tribes
  - Imperative for safe operations
  - Boating safety exchange in Barrow, Kotzebue & several remote North Slope villages







# Community Outreach

- **SPAR and HICKORY conduct community assistance**
  - Harpoon propellant delivery for subsistence whalers
  - Hazardous waste/plastics/scrap metal disposal

Diomedede  
Unalakleet  
Nome  
Golovnin  
Savoonga  
Kaktovik

Barrow  
Wainwright  
Kivalina  
Point Lay  
Kotzebue  
Point Hope  
Wales

U.S. COAST GUARD

# Salliq: Lessons Learned

- **Infrastructure Insufficient**
- **Lack of effective communication**
- **Small boats/short range helos ineffective**
- **Require icebreakers or ice hardened vessels with embarked helos**
- **Input from indigenous people imperative**





UNCLASSIFIED//FOUO



# Salliq: Lessons Learned

- **Domain Awareness**
  - Observed activity in region at or slightly above anticipated levels
  - Current technologies proved less than accurate regarding vessel activity and sea ice conditions
- **Logistics**
  - Existing infrastructure insufficient for prolonged operations (fuel, berthing, communications)
  - Need to provide own self rescue



UNCLASSIFIED//FOUO





# Salliq: Lessons Learned



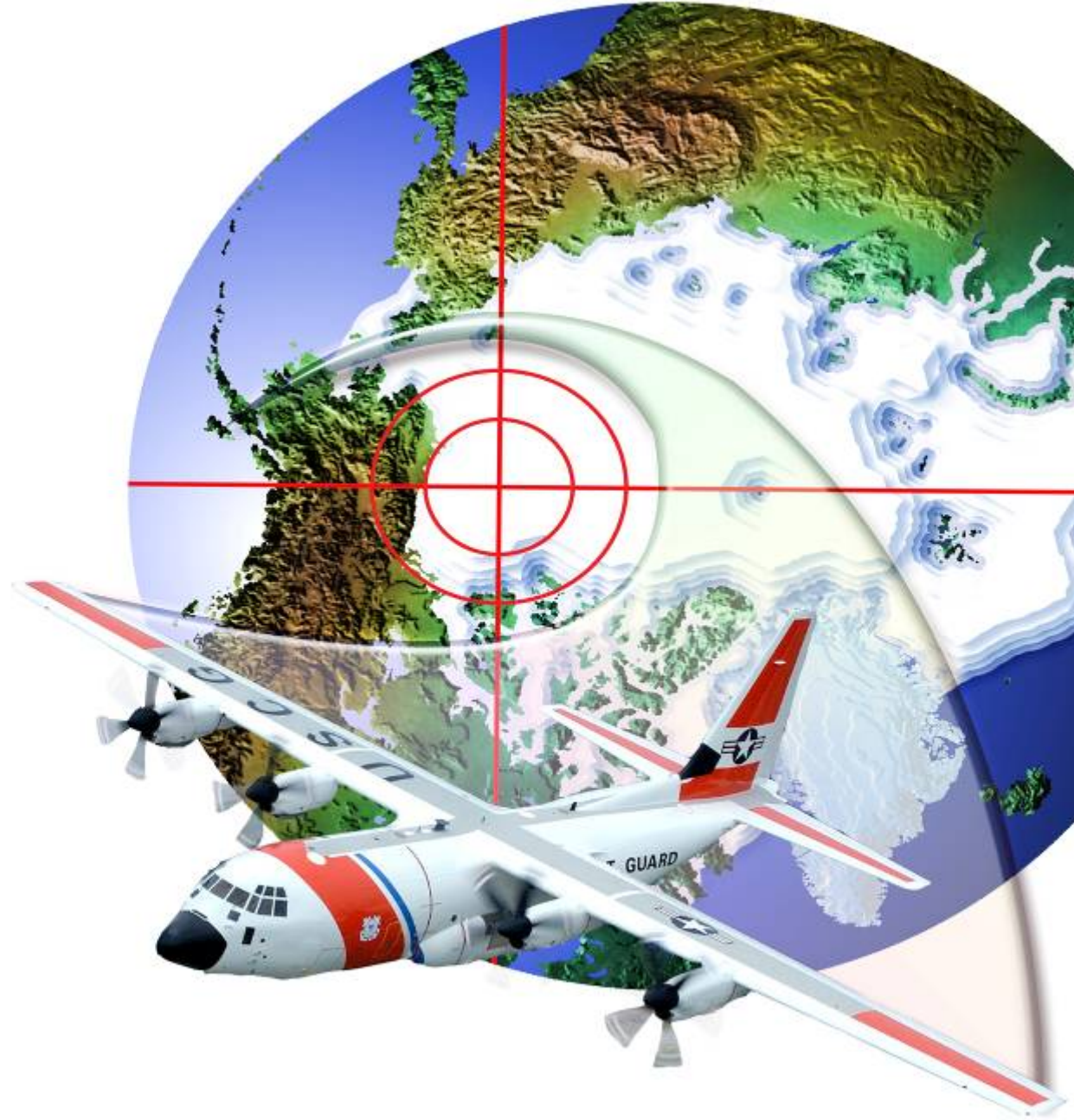
- **Resource Capability**
  - Small boats/short range helos ineffective
  - Require icebreakers or ice hardened vessels with embarked helos
  - Lack of effective communication network/architecture
- **Outreach**
  - Input from indigenous people imperative
  - Essential to have effective culturally sensitive engagement







# Operation Arctic Crossroads



HAZARDS



# Arctic Domain Awareness

- Air Patrols
  - ‘Eyes on’ above the Arctic Circle
  - Provide scientists platforms of opportunity
  - Media opportunity to increase ADA at the global level

ALL THREATS ALL HAZARDS  
ALWAYS READY







# 2009 Science Mission Overview



**USCGC HEALY will deploy to the Arctic region in support of the National Science Foundation for:**

- Ice seal and seabird surveys**
- Ice Free Effects on Mammals**
- US ECS claims**

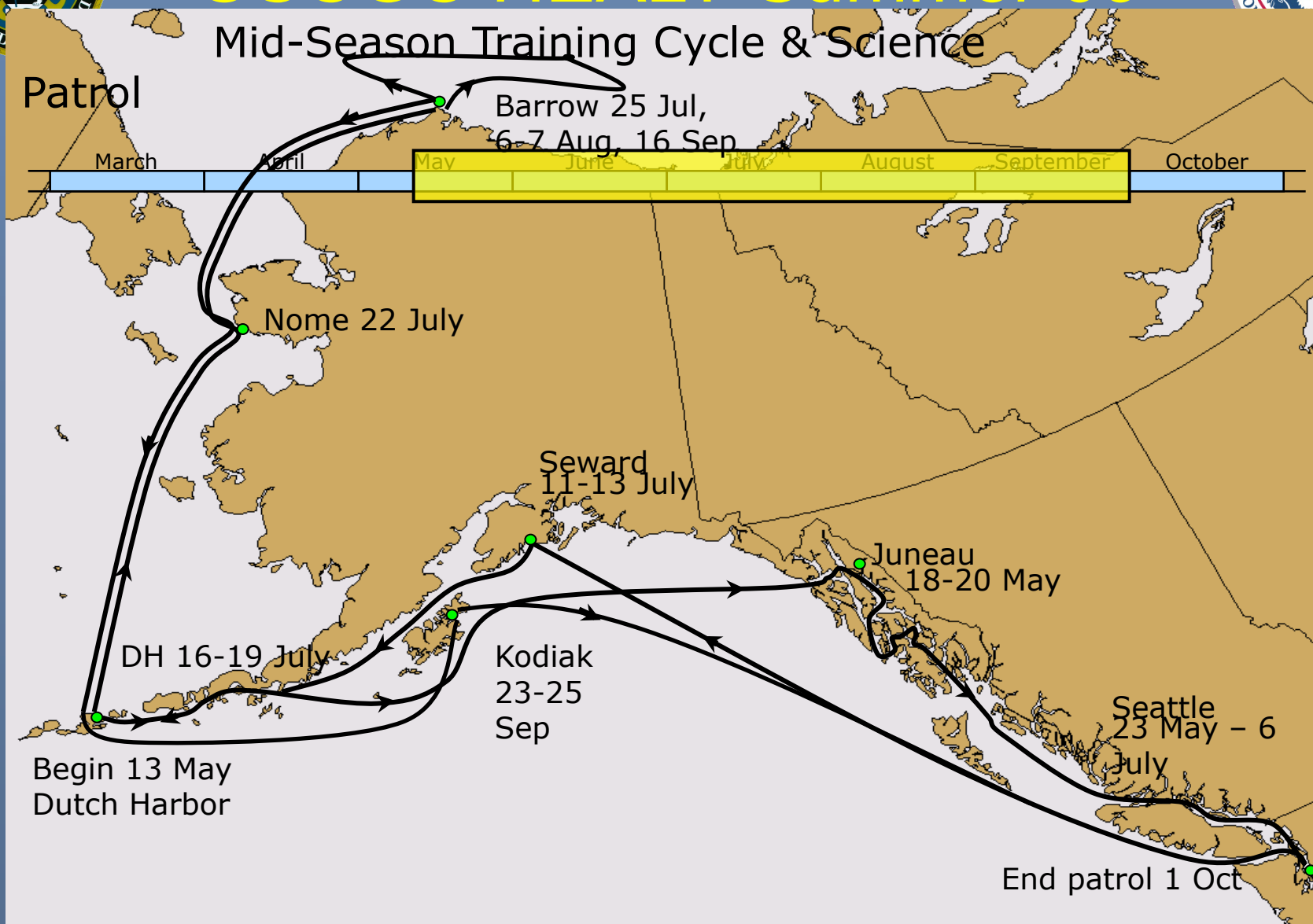
THREATS ALL HAZARDS  
ED ALWAYS READY





# USCGC HEALY Summer 09

## Mid-Season Training Cycle & Science



ALL THREATS ALL HAZARDS  
ALWAYS READY





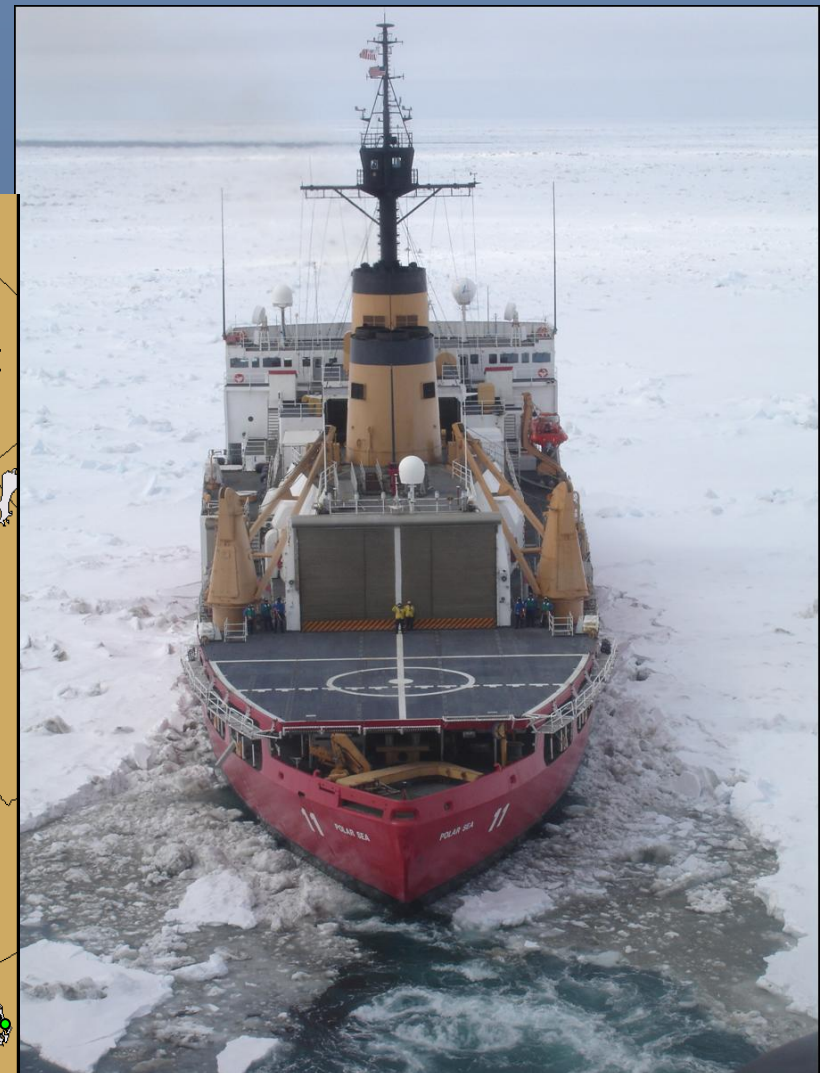
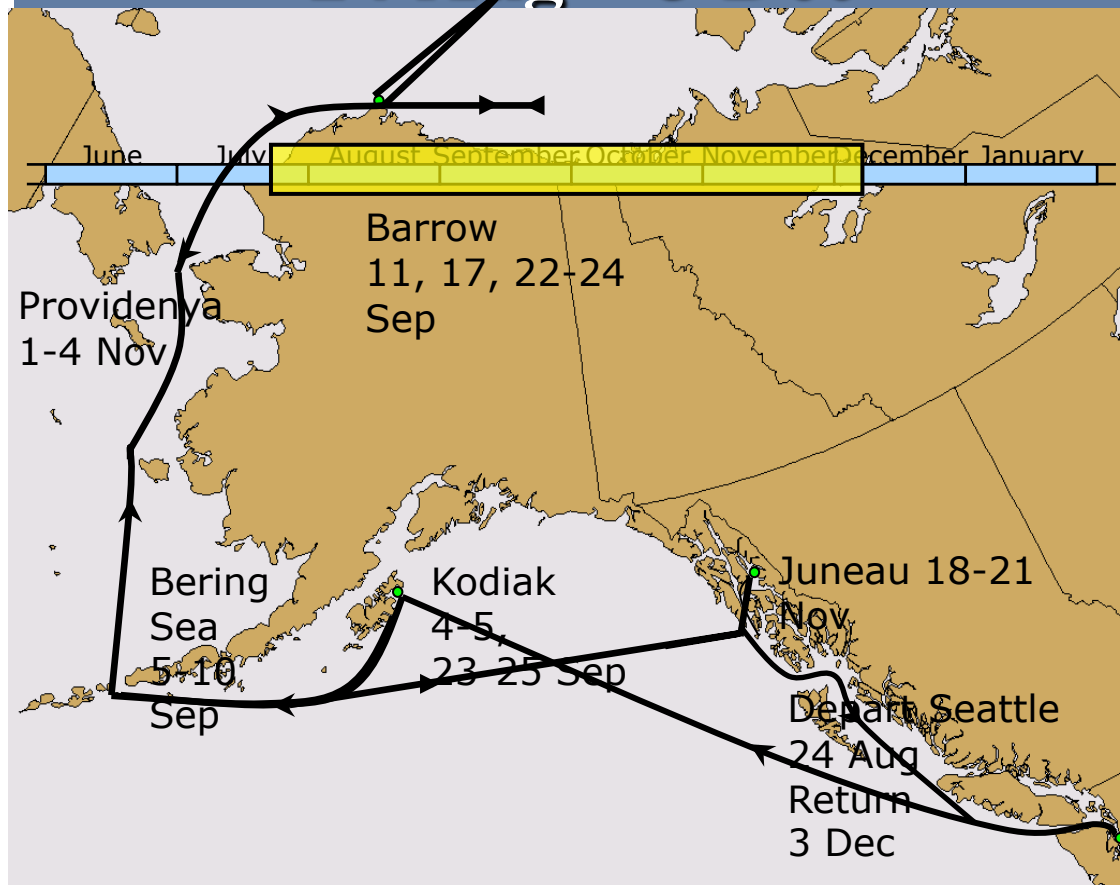
UNCLASSIFIED



# USCGC POLAR SEA

- Science ops for the National Science Foundation

24 Aug – 3 Dec





# Alaska Native Consultation and Cultural Communications Course



3-5 Aug 2009

Juneau



- DHS directive to solicit and engage Alaskan Native Tribes in the development of regulatory policies
- To provide Coast Guard leadership with a background on the federal trust responsibility & need for appropriate tribal engagement



ALL THREATS ALL HAZARDS  
ALWAYS READY





# USCG Prudhoe Bay

- Deployable Operations Group (DOG) forces deployed to Prudhoe Bay for 5 days, 19-25 July 2009 for inshore maritime security
- 2 small boats (RB-HS & SPC-SW), support equipment
- Sling launch boat
- 20 Personnel



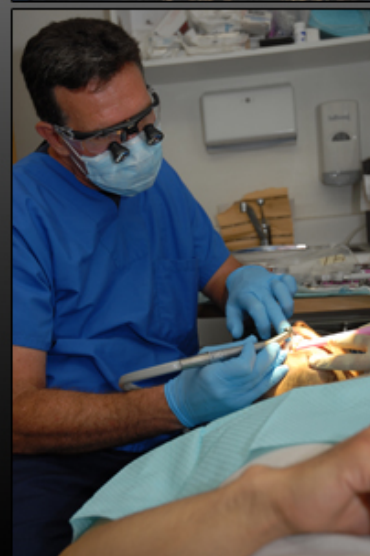
EATS ALL HAZARDS  
WAYS READY



# Nome Tailored Force Package



- 4 helos (CG, ANG, ARNG) and two 25' small boats
- 83 people
- Boating Safety Training Team
- SAR Demo/Static Display
- Visited 11 Villages
- Community/Tribal Liaison
- Building a traditional boat
- Medical/Dental/Veterinary/Optomety outreach Team
- Community Project – Beach Cleanup



Photos and layout by Petty Officer Jon-Paul Rios





# Barrow Tailored Force Package

25-30 Aug 2009

- One 25' RB-HS small boat
- One 23' Sea Ark
- One 18' Sea Wolf Boat
- Boating Safety Training Team
- Community/Tribal Liaison
- Delivered via C-130



RDS

## USCGC SPAR

- Deploy NOAA Buoy
- Spilled Oil Recovery System (SORS) Exercise in Nome 25 August
- Doctors to Little Diomedede







# CGC ALEX HALEY

## Arctic Patrol Sep – Oct 2009

Vertical Replenishment  
via embarked HH-65  
helo



ALEX HALEY underway with sea ice

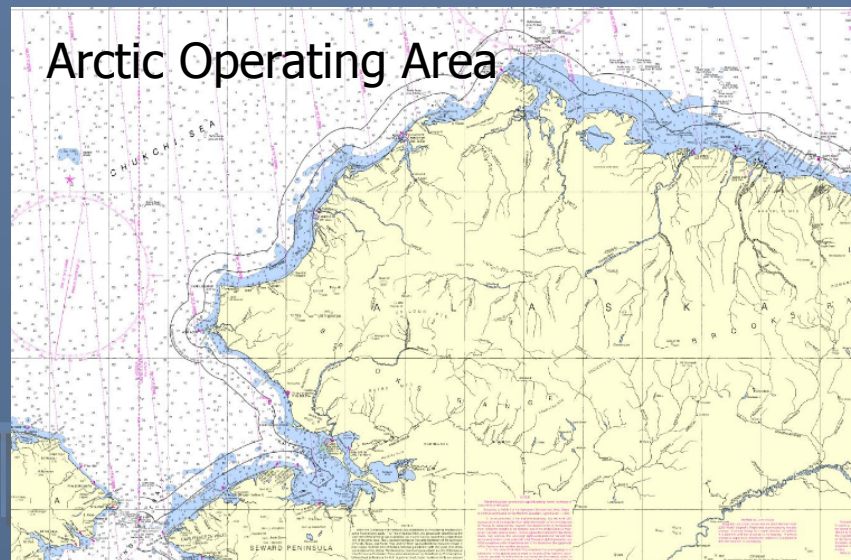


ALEX HALEY MOORED IN NOME, AK

### • Patrol Goals and Accomplishments

- Arctic Domain Awareness
  - Patrolled Arctic for 21 days.
- Community Outreach
  - Met with Mayor of Kotzebue.
  - Embarked helicopter served as static display for Kotzebue schoolchildren.
- Exercise VERTREP capability
  - Conducted VERTREP via embarked HH-65 off Kotzebue.

Arctic Operating Area







# Arctic MEDEVAC C/V BREMEN

03 Sept 09



UNCLAS//FOUO

Prudhoe Bay



600NM

Anchorage

AVSUFAC Cordova

C/S BREMEN

30NM

Prudhoe Bay

**Situation:** NPSC/D17CC received a MEDEVAC request for a 27 YOF suffering from possible appendicitis, on the C/S BREMEN, located approximately 30 NW of Prudhoe Bay. Due to location, it would take Coast Guard assets approximately 8 hours to arrive on scene.

**Response:** No air assets were available from RCC Anchorage, North Slope Borough SAR or local companies in the Prudhoe Bay area. D17 engaged with a local cooperative, Alaska Clean Seas, who agreed to launching one of their boats for the response.

**Rescue:** Alaska Clean Seas launched a 42 foot vessel, with two medics from the BP oil company, to rendezvous with the BREMEN and returned the patient to Prudhoe Bay where a commercial air ambulance transport to Anchorage.

UNCLAS//FOUO





# Alaska Native Diversity Education Recruitment Outreach

## 23-25 SEP 09



Nome, AK – Petty Officer 2nd Class Cody Lathrop with the Coast Guard Cutter Mustang homeported in Seward, Alaska, assists a Nome high school student with donning law enforcement gear during the Alaskan Native Outreach at Nome High School. Lathrop demonstrated Coast Guard law enforcement gear and spoke about his role as a machinery technician to youth at Nome, Kotzebue and Barrow public schools.



BARROW



Barrow, AK – Capt. Henry Shen with ISC Ketchikan takes a Barrow Middle School student's blood pressure during the Alaskan Native Outreach at Barrow's middle school. Shen is a flight surgeon and spoke with students about his Coast Guard career. His hometown is Mountain Village, Alaska.



Kotzebue, AK – Petty Officer 1st Class Eileen Nelson with Marine Safety Unit Morgan City participates in a Kid's Don't Float program during the Alaskan Native Outreach with Kotzebue's elementary students focusing on the importance of wearing life jackets. Nelson is a native of Igiugig, Alaska



Kotzebue, AK - Master Chief Jeremiah Roberts with the Seventeenth District Command Center in Juneau shows a middle school student how to plot on a navigational chart during the Alaskan Native Outreach.



Nome, AK - Chief Luis Nieves with Sector Anchorage shows a Nome high school student the proper way to carry a weapon during the Alaskan Native Outreach at Nome High School. Nieves is a Coast Guard reservist and works with the Alaska State Troopers in Kotzebue.

Gulf of Alaska

Whitehorse

Juneau





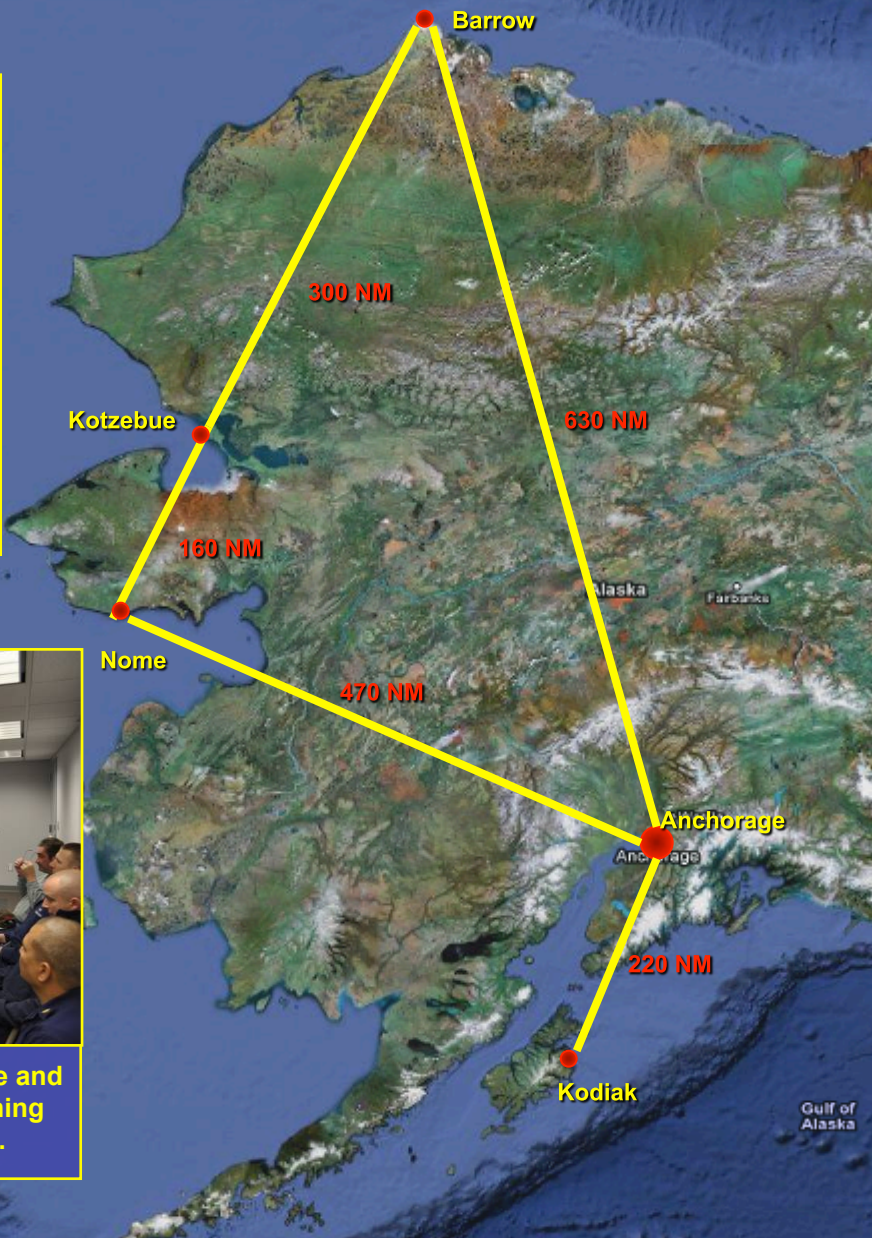
# Alaska Native Diversity Education Recruitment Outreach

23-25 Sep 2009



Team consisted of 35 members from:

- CG-12
- CG-00H
- District 17
- Air Station Kodiak
- Sector Anchorage
- Sector Honolulu
- MSU Morgan City
- ISC Ketchikan
- CGC MUSTANG
- CG Auxiliary
- D17 PADET Kodiak
- CG RUITOFF Anchorage



22 Sep: A/S Kodiak C130 transported the team from Anchorage to Nome.

23 Sep: Conducted outreach at Nome Elementary and Nome Beltz Jr-Sr High School. Upon completion, departed to Kotzebue via C130.

24 Sep: Conducted outreach at Kotzebue Elementary, Middle and High Schools. Upon completion, departed to Barrow via C130.

25 Sep: Conducted outreach at Barrow Elementary, Eben Hopson Middle School, Barrow High School and Iisagvik College. Upon completion, departed to Anchorage via C130. Mission complete.



22 Sep: All members met in Anchorage and received cultural communications training from Mr. Joel Casto, D17 Tribal Liaison.

Coast Guard team representation consisted of:

- Military and Civilian Recruiting
- Search and Rescue
- Law Enforcement
- Small Boat Operations
- Large Cutter Operations
- Air Operations (fixed and rotary wing)
- Marine Safety
- Water & Boating Safety
- Public Affairs
- Medical (Doctor / Flight Surgeon)
- Alaska Native Coast Guard Members





# Alaskan Native Outreach 2009

23-25 Aug 09



UNCLAS//FOUO



Tours of C-130, H-65 and Cutter ALEX HALEY



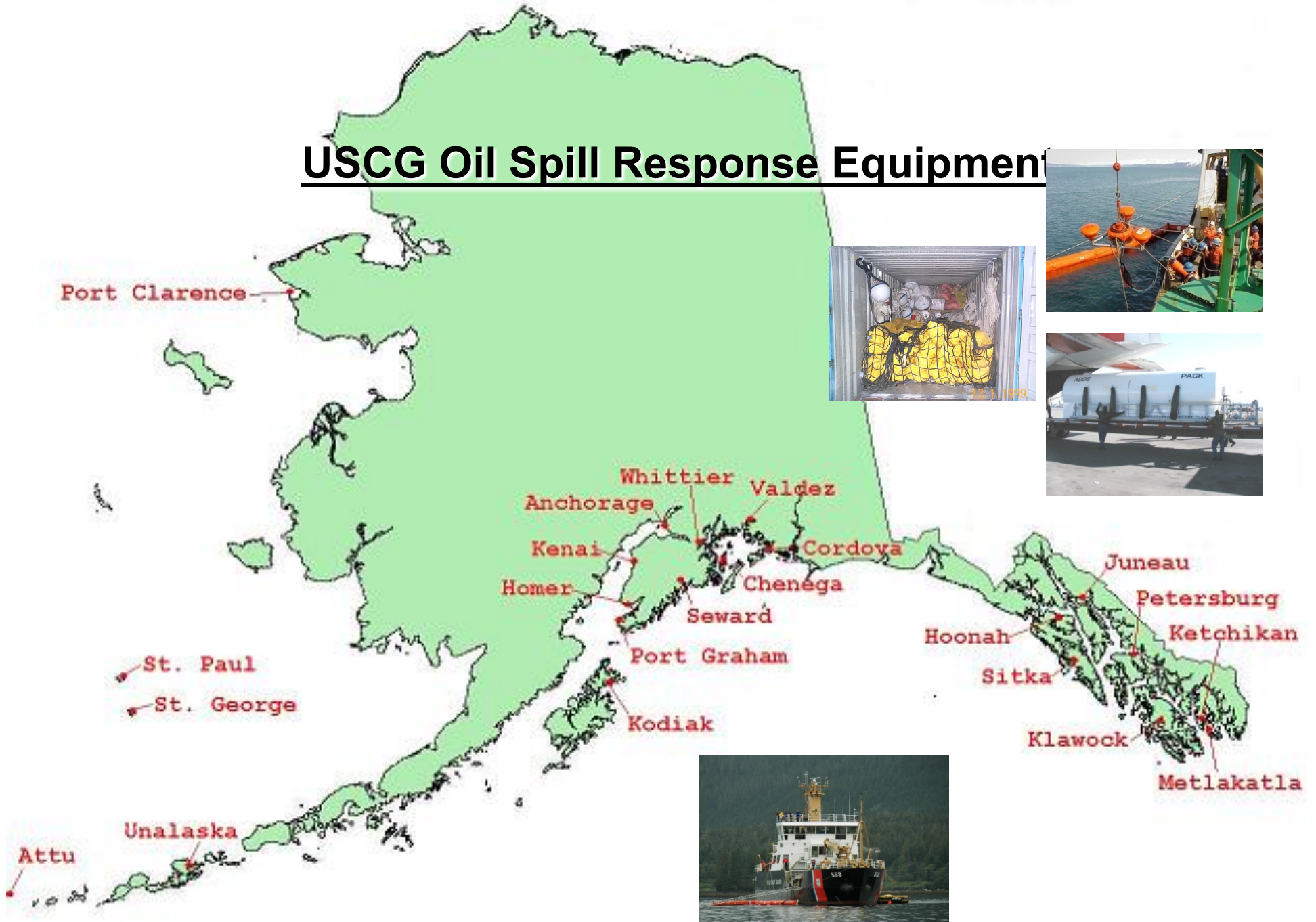
Water Safety Training at schools



Showing communities and Students what we do... Navigation, Law Enforcement, Emergency Medical Response



# USCG Oil Spill Response Equipment







# Cultural Security



- AK has 229 of the 564 Federally Recognized Native Tribes
- EO 13175 – Mandates Tribal Consultation
- 13 Native Regional & 200 Village Corporations
- Protection of subsistence lifestyle engage with native corporations

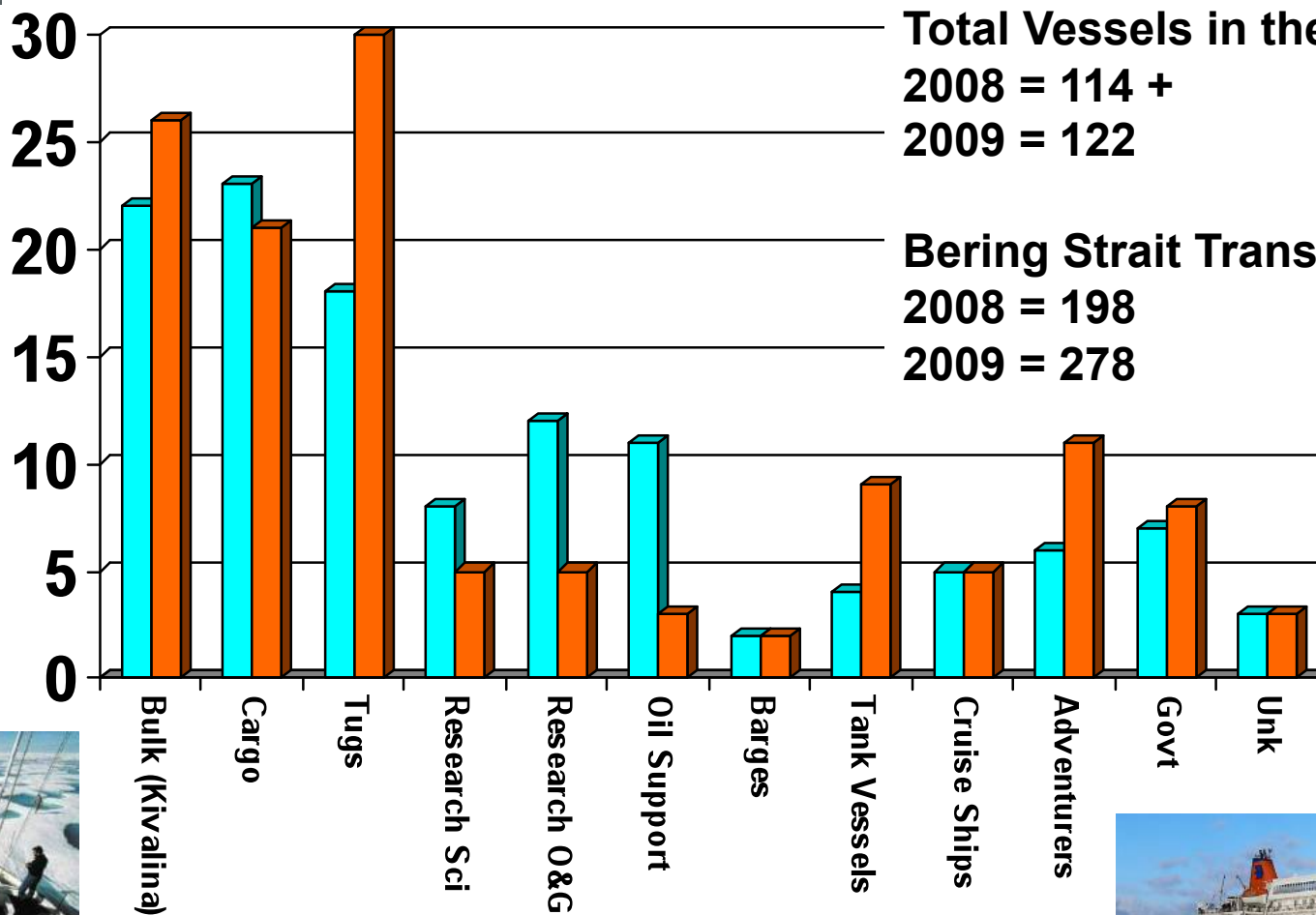




# 2008/2009 Arctic Activity



2008 2009



Total Vessels in the Arctic  
2008 = 114 +  
2009 = 122

Bering Strait Transits  
2008 = 198  
2009 = 278

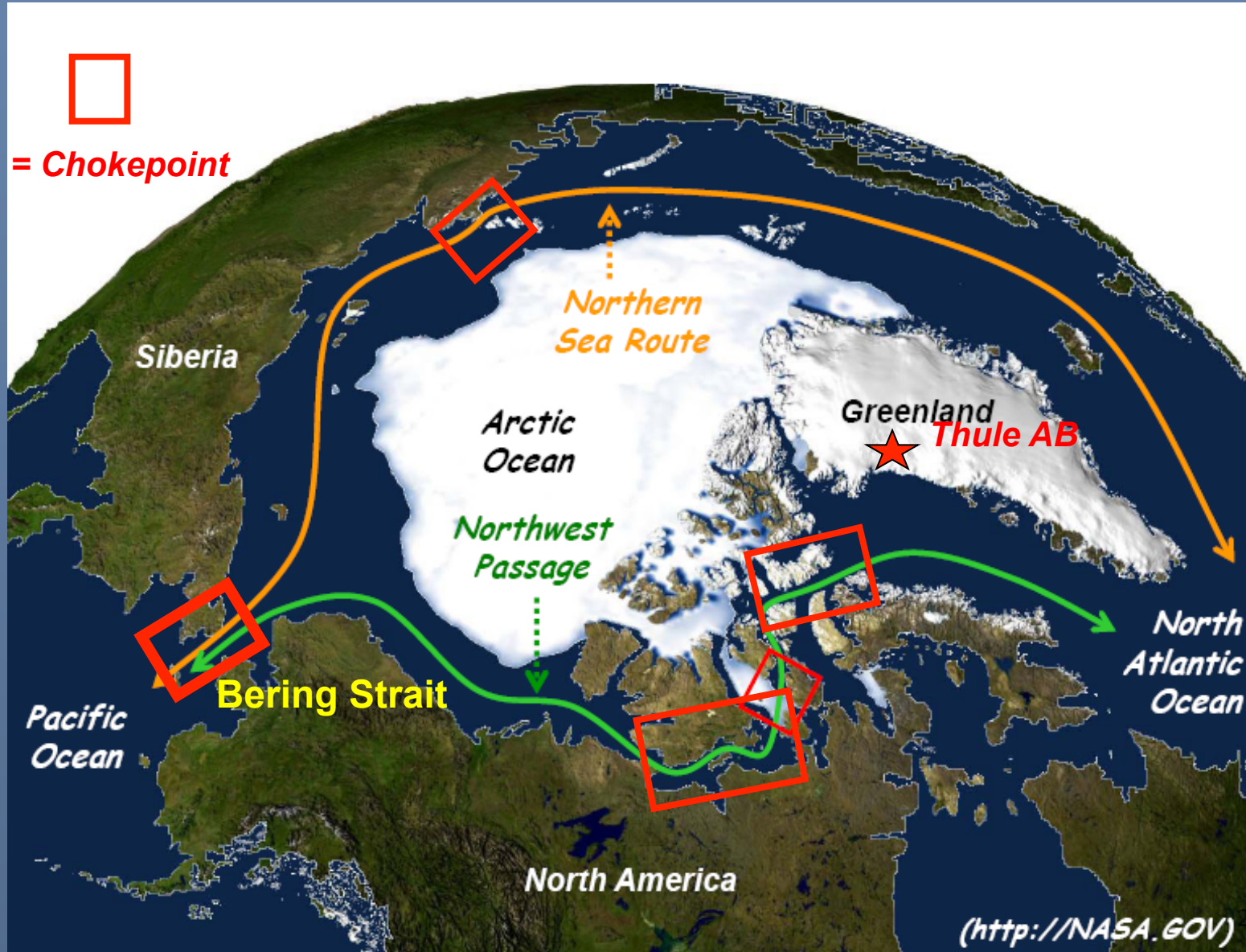






# National Security

## Potential Future Arctic Shipping Routes



UNCLASSIFIED

# Maritime Traffic Management

- **Our Strait of Gibraltar**

50nm

Max Depth 138ft

Max Depth 186ft

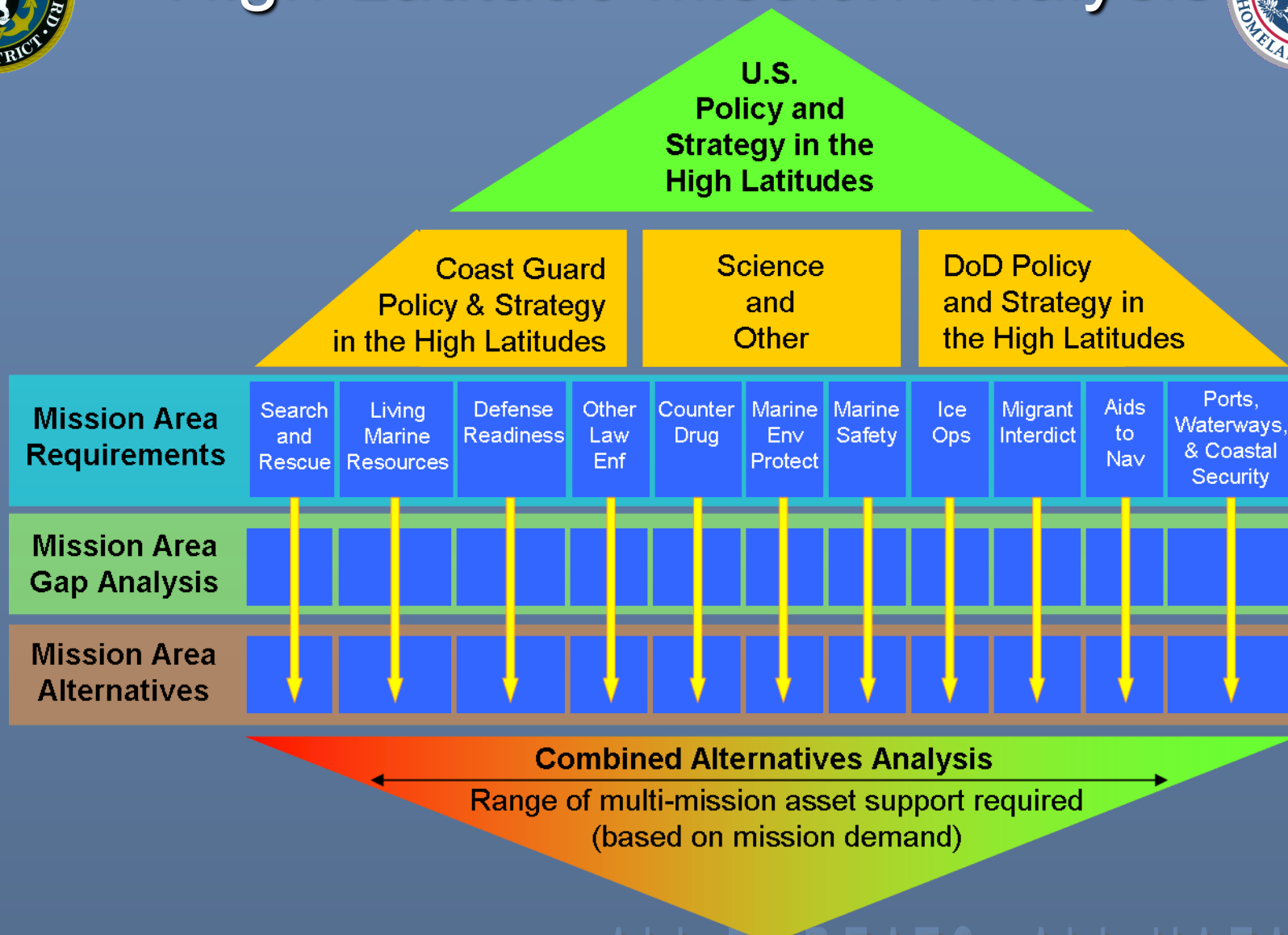
- **250 + Transits Per Year**

UNCLASSIFIED





# High Latitude Mission Analysis



ALL THREATS ALL HAZARDS  
ALWAYS READY



# U.S. ICEBREAKERS

- Operating Budget in 2010 remains with NSF
- POLAR STAR reactivation
- Long term icebreaker plans undetermined



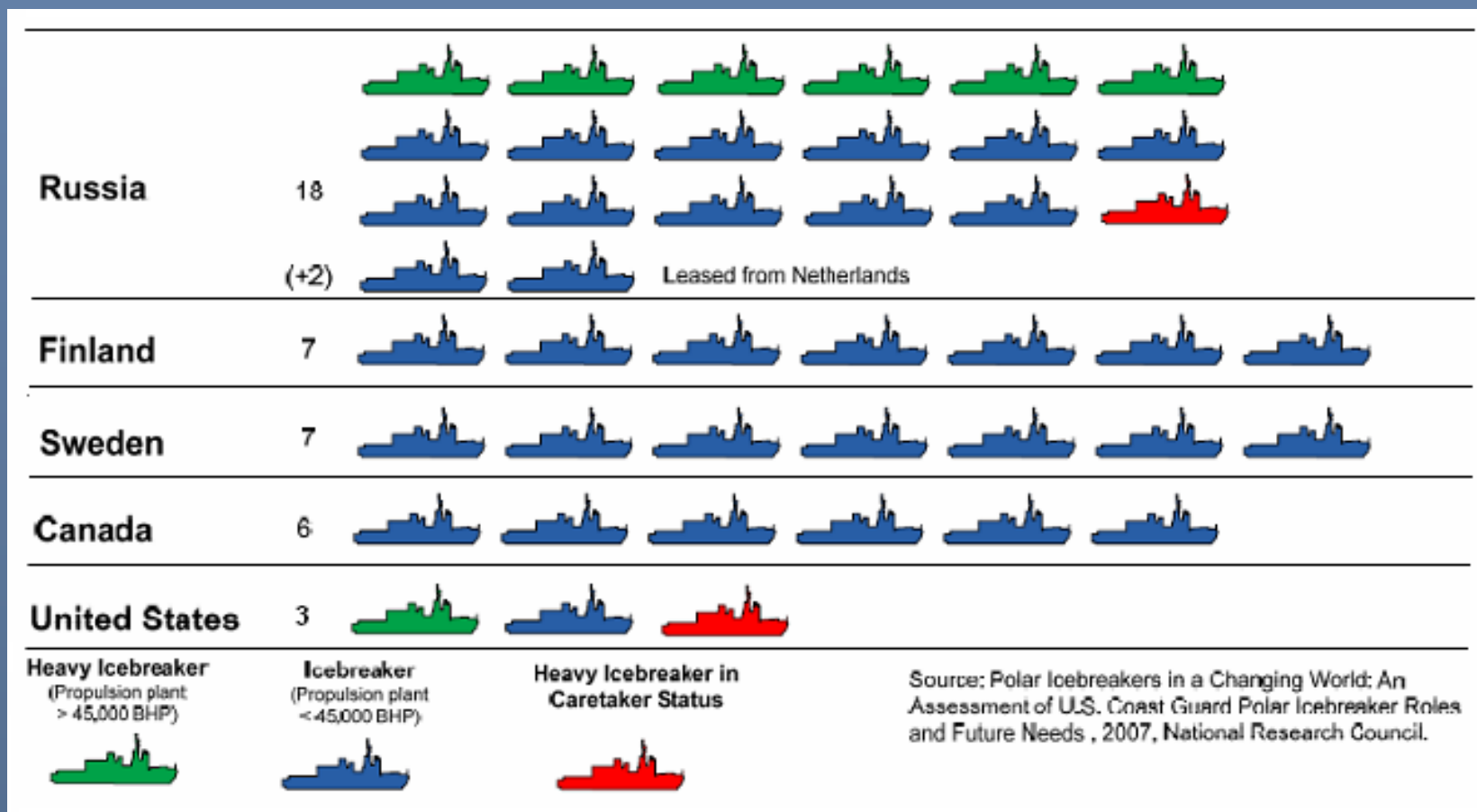
ALL TH





# Icebreaker Force Laydown

## Largest Polar and Baltic Icebreakers





# Future Options for Icebreaking Capability

- Polar Icebreaker Acquisition History:
  - 1964 to 1975: 2 Polar-Class Icebreakers, \$125M, **USCG Appropriations**
  - 1990: USCGC HEALY, \$329M, **DOD Appropriations (Navy Shipbuilding)**

## Recapitalization Options for Polar-Class Icebreakers:

1. Service Life Extension Project (**add 25 years of service life**)  
**\$400M per ship, 2-year maintenance period**
2. Replacement (**30-year service life**)  
**Polar-Class equivalent: \$800-\$925M per ship, 8-10 year acquisition**
3. Reactivate POLAR STAR (**add 7-10 years of service life**)  
**\$77.8M (maintenance and crew), 2-3 year maintenance period**





# COCOM Equities



MEMORANDUM FOR:   
 FROM:   
 SUBJECT:

1. The United States' interest in the Antarctic region is a security and strategic domain with active preparations. Necessary States' information necessary

2. To assure icebreaker operations of their maintenance a result, the inability to icebreaker operations GIANELLI

3. In summary We therefore

- A
- G
- C
- S
- I

VICTOR General, U.S. North

cc: Commandant

CHAIRMAN OF THE JOINT CHIEFS OF STAFF  
WASHINGTON, D.C. 20315-5000

CM-0347-08  
27 June 2008

MEMORANDUM FOR: Commander, U.S. Northern Command  
Commander, U.S. Pacific Command  
Commander, U.S. Transportation Command

Subject: Icebreaker Support

1. Thank you for your memorandum<sup>1</sup> regarding polar icebreaker support. The Maritime Security Policy Coordinating Committee (MSPCC) and Maritime Security Working Group have been working to gain interagency consensus on polar icebreaking policy since the 5 March 2008 Joint HSC and NSC Deputies Committee (DC) meeting.
2. At the next DC meeting on this topic, the MSPCC will recommend expanded polar region mission requirements. The requirements will include a future polar icebreaking fleet of six cutters to maintain a 2.0 presence -- one icebreaker forward deployed in each polar region. Deputies will be asked to concur in the new mission requirements and associated requirements framework as a starting point for further analysis and refinement.
3. Additionally, the U.S. Coast Guard seeks restoration of budget authority for the Nation's polar icebreaker fleet currently held by the National Science Foundation. The MSPCC will recommend that deputies concur that funding should be restored to the U.S. Coast Guard. This would include funding for operations and maintenance of the existing icebreaker fleet, POLAR STAR caretaker status in FY 2009, and POLAR STAR reactivation in FY 2010.
4. These initiatives have the Chairman's full support, and the Joint Staff will sponsor them at the next DC meeting at a date to be determined.

JAMES E. CARTWRIGHT  
General, United States Marine Corps  
Acting Chairman  
of the Joint Chiefs of Staff

Reference:  
1 CDRUSNORTHCOM/CDRUSPACOM/CDRUSTRANSCOM memorandum, 21 May 2008, "Icebreaker Support"

Copy to:  
Chief of Naval Operations  
Commandant, U.S. Coast Guard

- Strategic Importance
- Unique Power Projection Challenges
- Evolving Vulnerabilities
- New Threat Vectors



ALWAYS READY

UNCLASSIFIED



# INTERAGENCY OCEAN POLICY TASK FORCE



- National Ocean Council
- Areas Of Special Emphasis
  - Changing Conditions in the Arctic
- Framework for Effective Coastal and Marine Spatial Planning
  - Large Marine Ecosystem (LME): 5 in Alaska



THE WHITE HOUSE COUNCIL ON ENVIRONMENTAL QUALITY

*Interim Report  
Of The  
Interagency Ocean Policy  
Task Force*

*September 10, 2009*



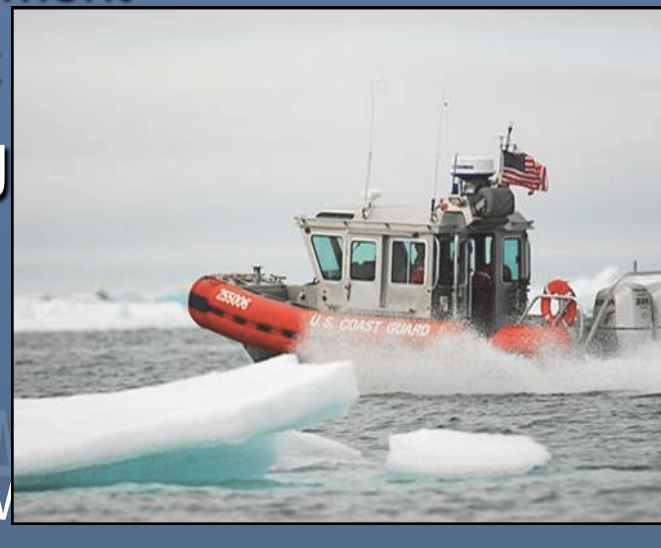
ALL





# ARCTIC CROSSROADS 2010

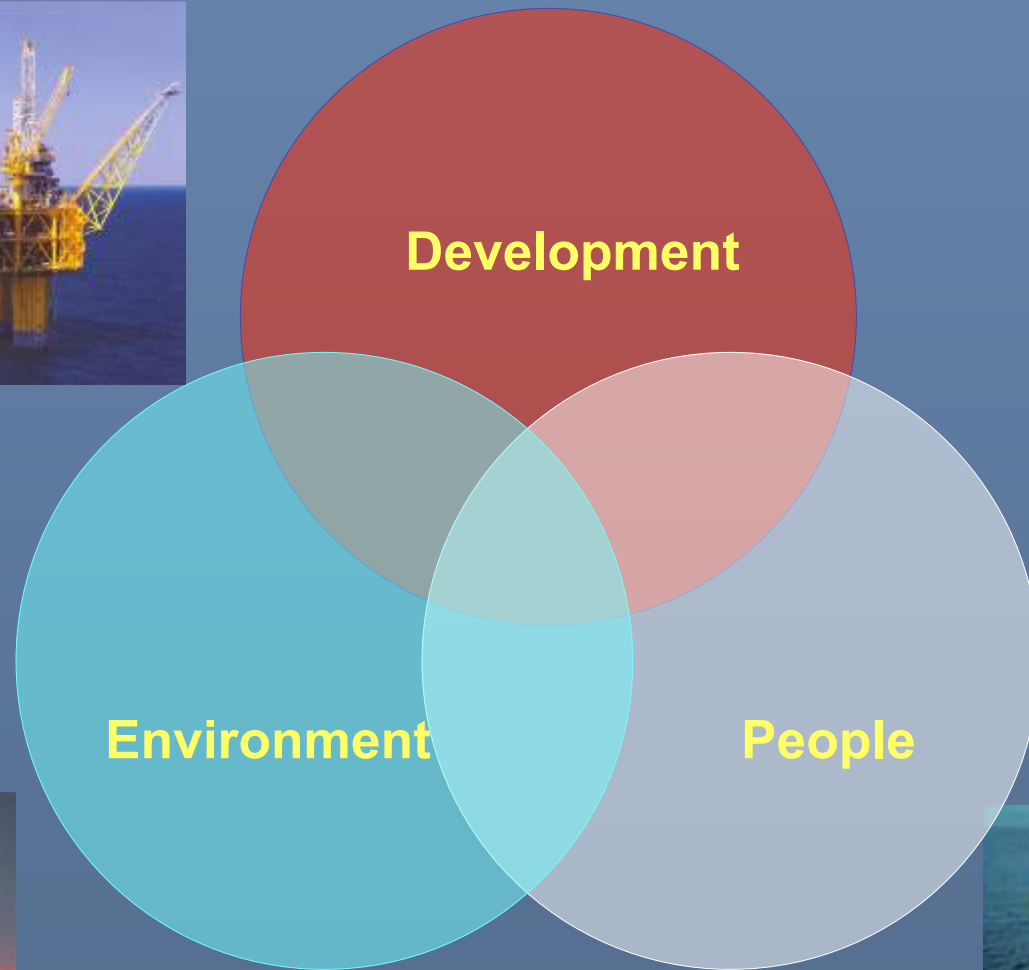
- Plan Development Underway:
  - Arctic Domain Awareness (ADA) Flights
  - CANUSNORTH Tabletop Exercise
  - Icebreaker Science Mission/Icebreaker Mobile Forward Operating Location
  - SORS Deployment North of the Arctic Circle
  - Water Safety & Young Alaskan Engagement
  - Continued Native Alaskan Engagement
- Total Scope of Operation Funding Dependent



AREA  
ALW



# The Arctic Conundrum





# Coast Guard Arctic Operations Summer 2008

## Arctic Circle Deployments

- 2 225-ft Seagoing Buoy Tenders
- 2 378-ft High Endurance Cutters  
w/embarked MH-65C helicopter
- 1 420-ft Icebreaker

## Forward Operating Location Deployments

- 2 MH-65C helicopters (FOL Barrow)
- 2 Response Boats – Small (FOL Barrow)
- 36 Operations and Operational Support  
Personnel (FOL Barrow & Prudhoe Bay)
- Marine Safety and Security Team  
(FOL Prudhoe Bay)
- 4 HC-130 aircraft (FOL Nome)
- Boating Safety Team
- Marine Inspectors Team
- Indigenous Population Engagement Team

# Coast Guard Arctic Operations Summer 2008





