



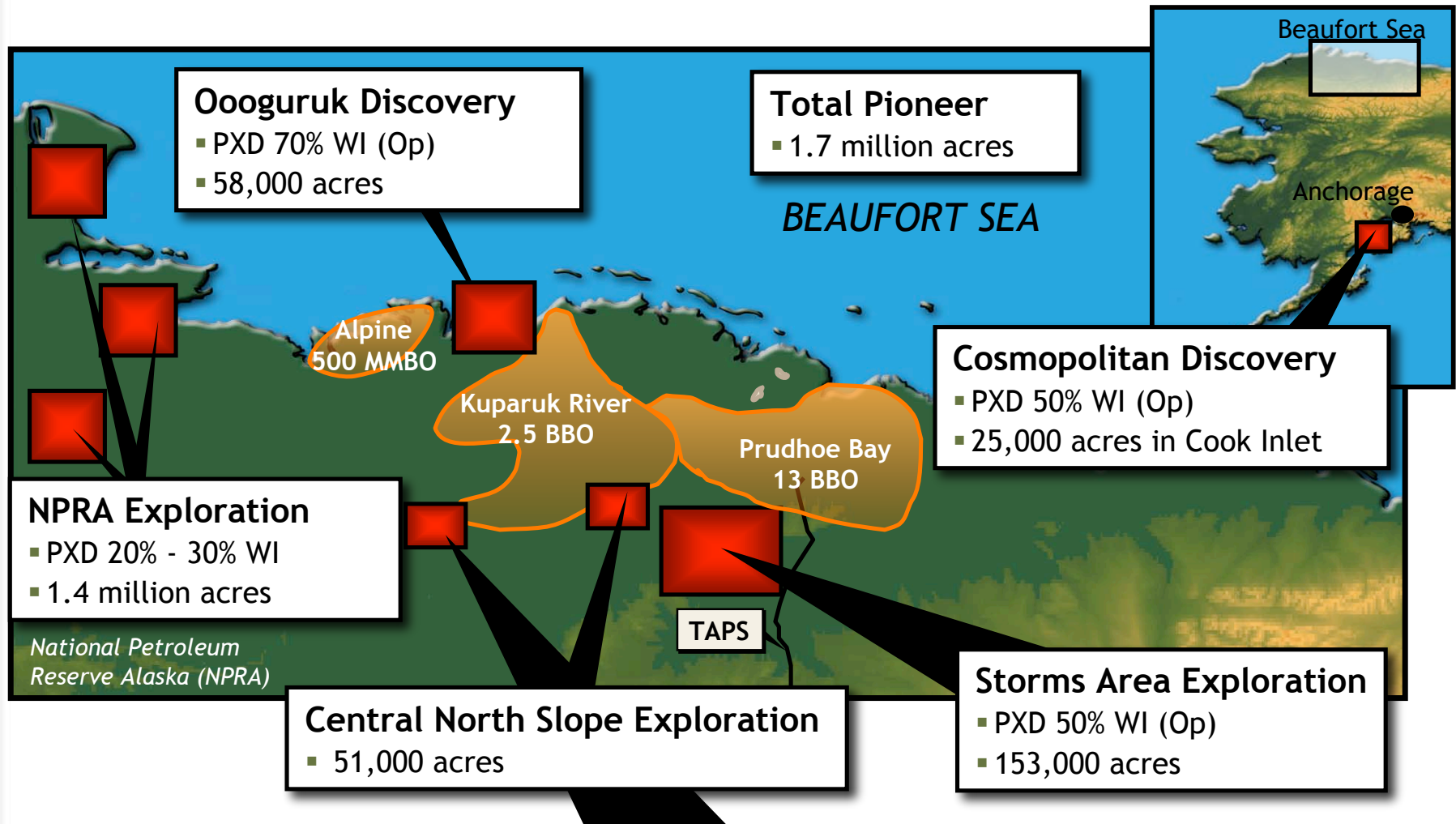
PIONEER
NATURAL RESOURCES



**RESOURCE DEVELOPMENT COUNCIL
CONFERENCE**

November 15, 2006

Pioneer's Alaska Acreage



Oooguruk At A Glance



Future Operating Statistics

Field Life Cycle	Development
Project Type	Oil, EOR
Gross Acres	58,000
Working Interest	70% (Operator)
Partner	ENI (30%)
Gross Reserve Potential	50 - 90 MMBO
% Liquids	100%
First Production	2008
Gross Peak Flow Rates	15 - 20 MBOPD
Productive Life	25+ Years
Development Wells	38
Productive Intervals	2
3-D Seismic Coverage	100%



- Gravel drill site constructed 1H '06
- First production 2008



oooguruk

OOOGURUK FIELD DEVELOPMENT

PIONEER PRODUCTION FACILITIES AND TIE-IN TO CONOCOPHILLIPS DS-3H FLOWLINE

HARRISON BAY



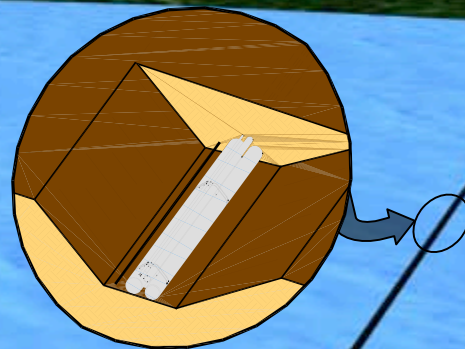
NABORS 19E DRILL RIG

OOOGURUK DRILL SITE AND PRODUCTION FACILITIES

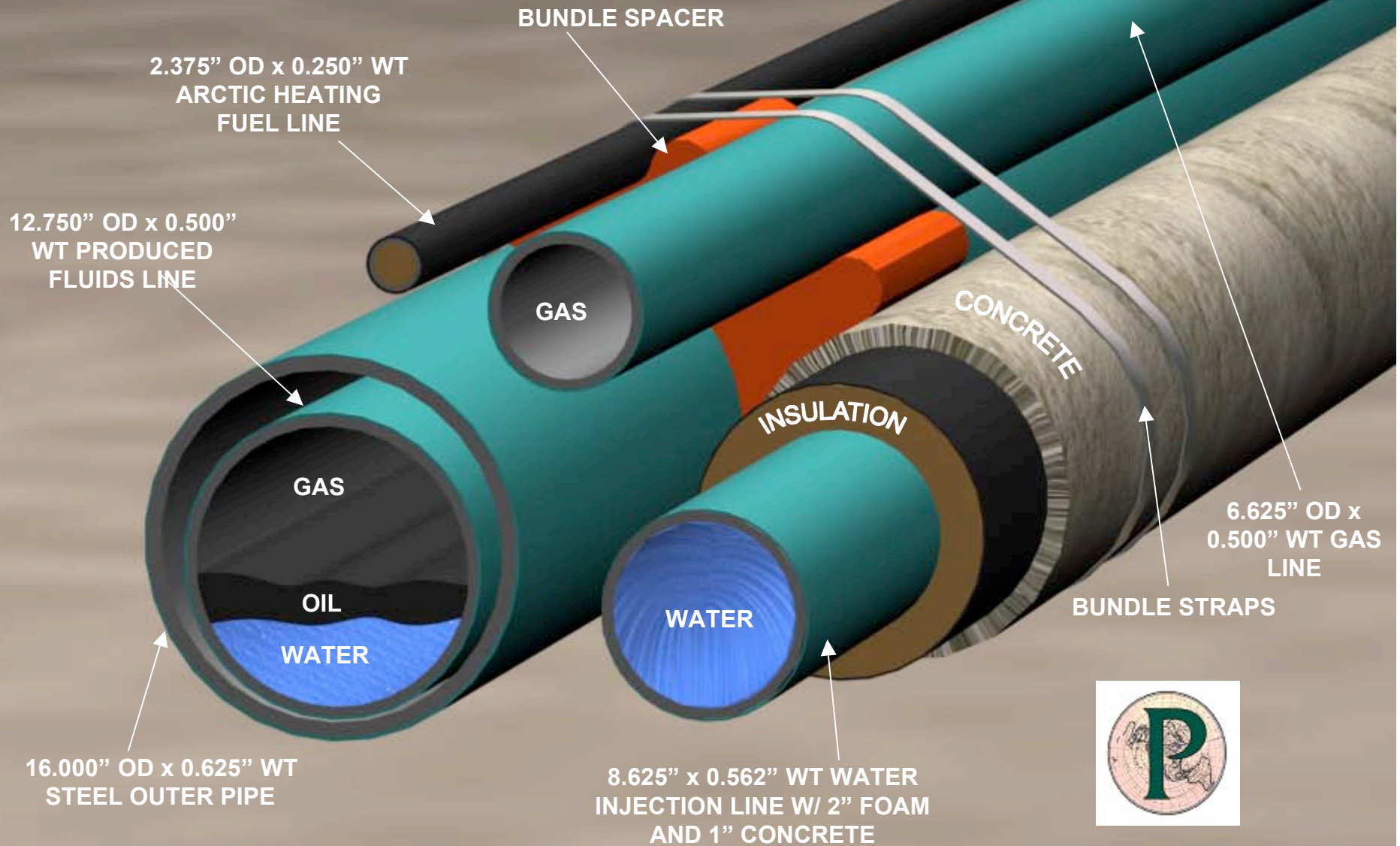
DOCK

PRODUCTION MODULES

CAMP AREA



OOOGURUK FIELD DEVELOPMENT FLOWLINE BUNDLE CONFIGURATION



**PIONEER NATURAL
RESOURCES ALASKA, INC.**

Oooguruk - Past



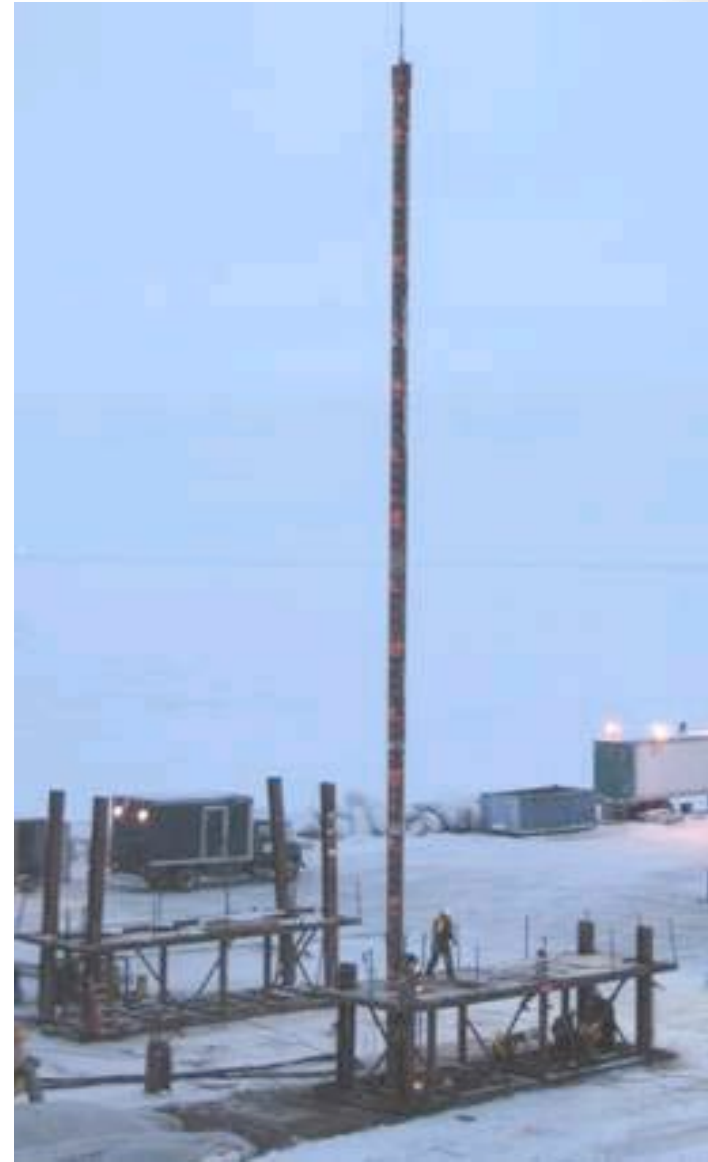
- **Winter 2006**
 - Constructed 6 acre offshore drillsite
 - Constructed 2 acre onshore pad
- **Spring/Summer/Fall 2006**
 - Installed slope protection on drillsite
 - Gravel conditioning
 - Commenced module fabrication
 - Commenced drilling rig modifications
 - Support Studies



Oooguruk - Present



- Driving well conductors on drillsite
- Installing piling for onshore pad
- Mobilizing construction camps
- Module fabrication ongoing
- Drilling rig modifications ongoing
- Transporting modules and materials



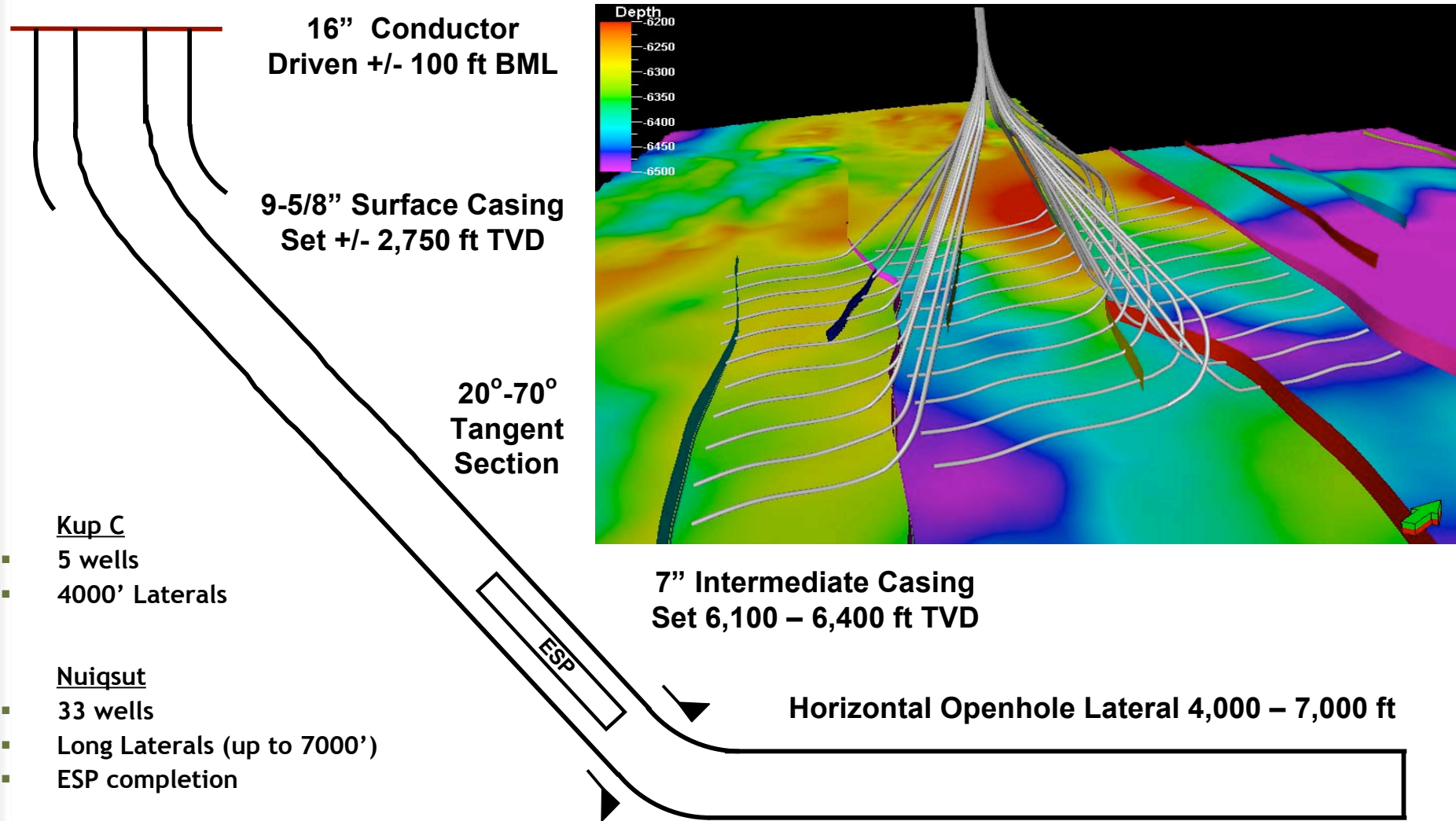
Oooguruk - Future



- 1Q 2007
 - Ice road construction
 - Module installation
 - Subsea flowline installation
- 2Q 2007
 - Drilling rig installation
- 3Q 2007
 - Commission rig and facilities
- 4Q 2007
 - Commence drilling



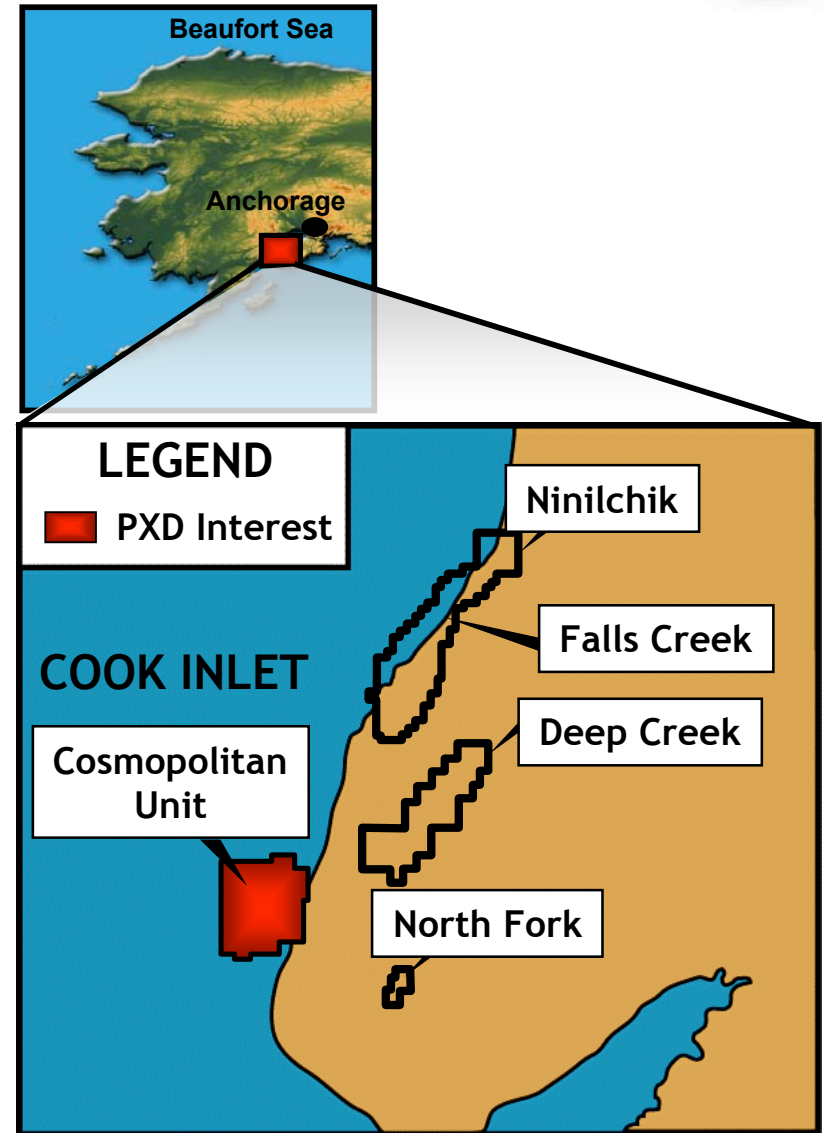
Ooguruk - Drilling



Cosmopolitan At A Glance



Future Operating Statistics	
Field Life Cycle	Appraisal
Project Type	Oil
Gross Acres	25,000
Working Interest	50% (Operator)
Partners	COP, DVN, FST
Gross Resource Potential	30 - 100 MMBO
% Liquids	100%
First Production	~2010
Productive Intervals	2
3-D Seismic Coverage	100%



Cosmopolitan Go Forward Plan



- Appraisal well planned for 2007
- Evaluate well results
- If successful:
 - Formulate development strategy
 - Complete engineering study
 - Make development decision