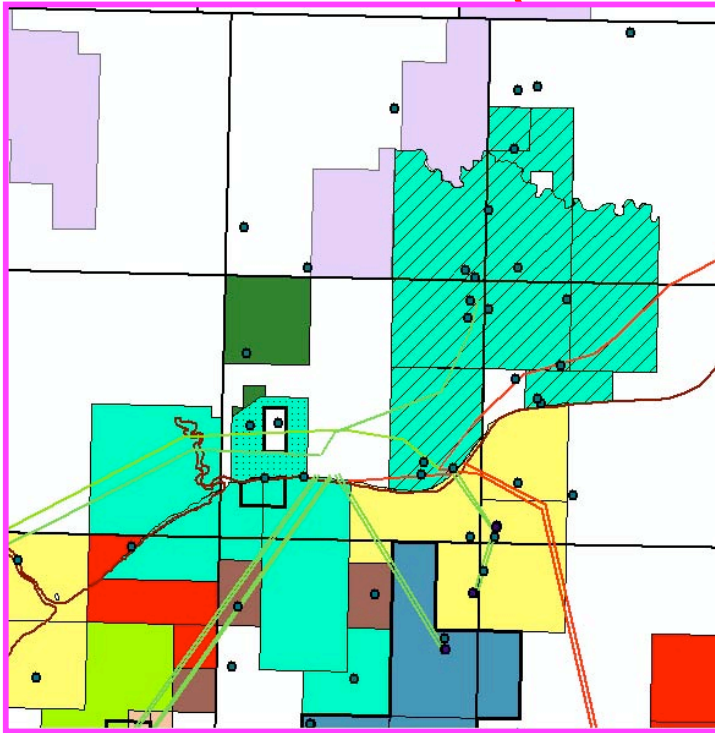
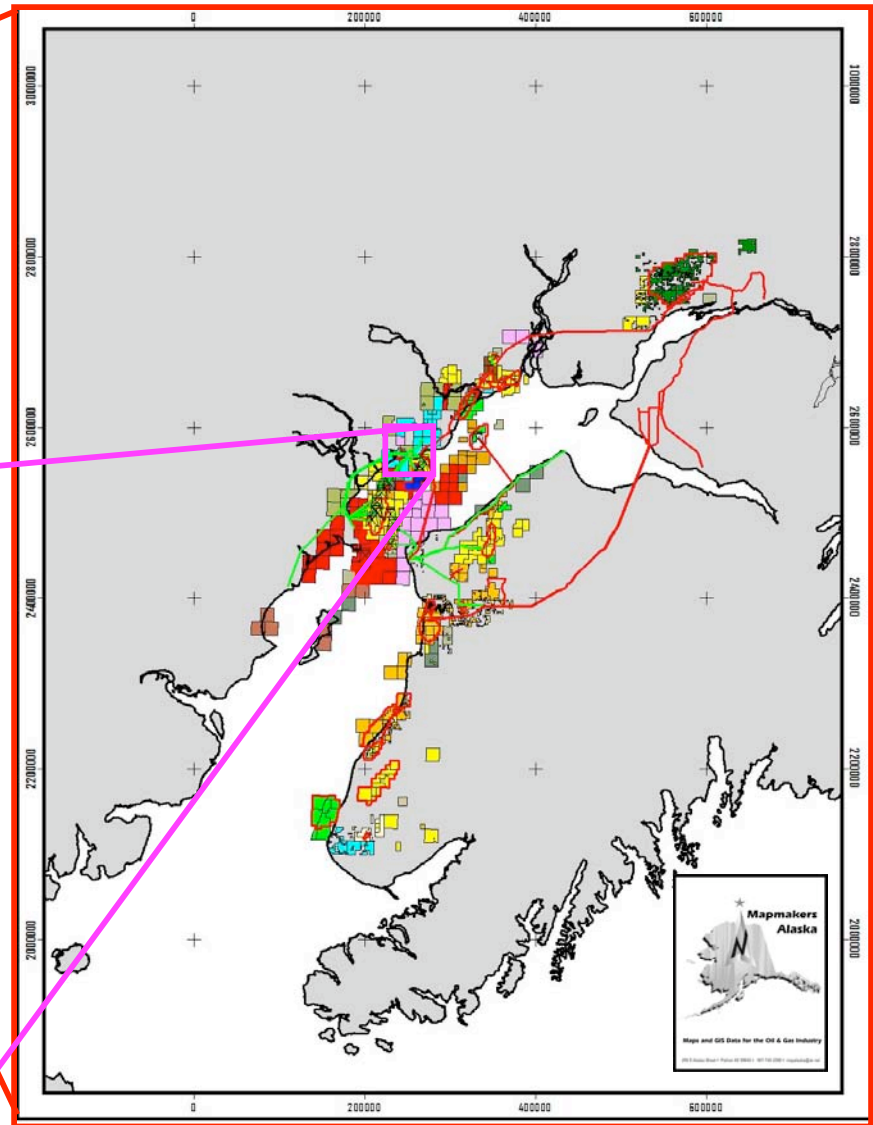
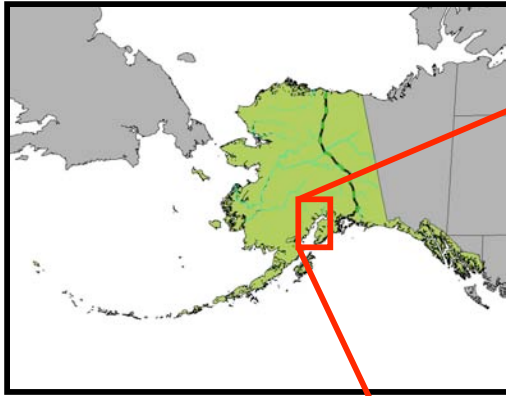




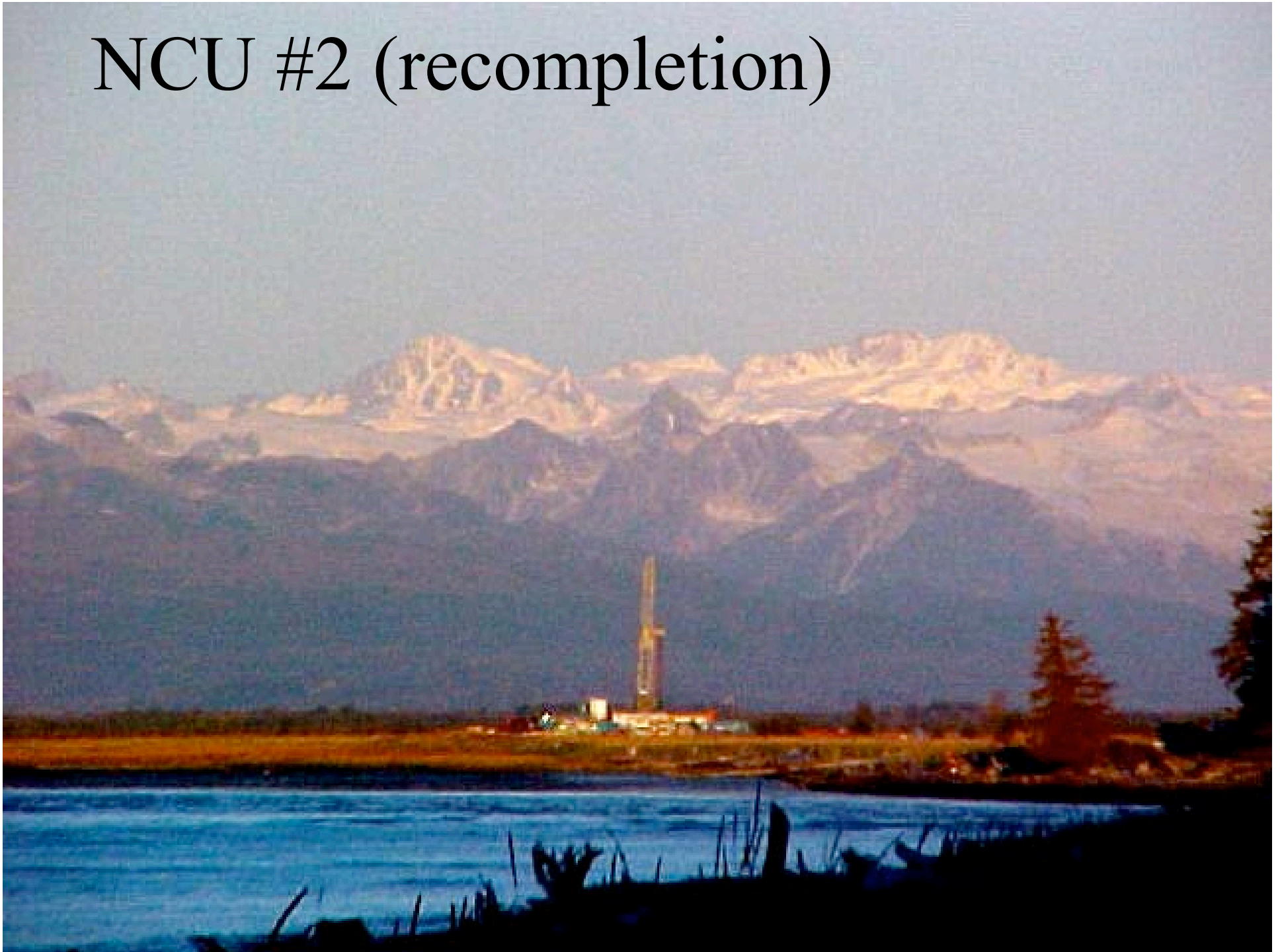
Aurora



Aurora Operations



NCU #2 (recompletion)

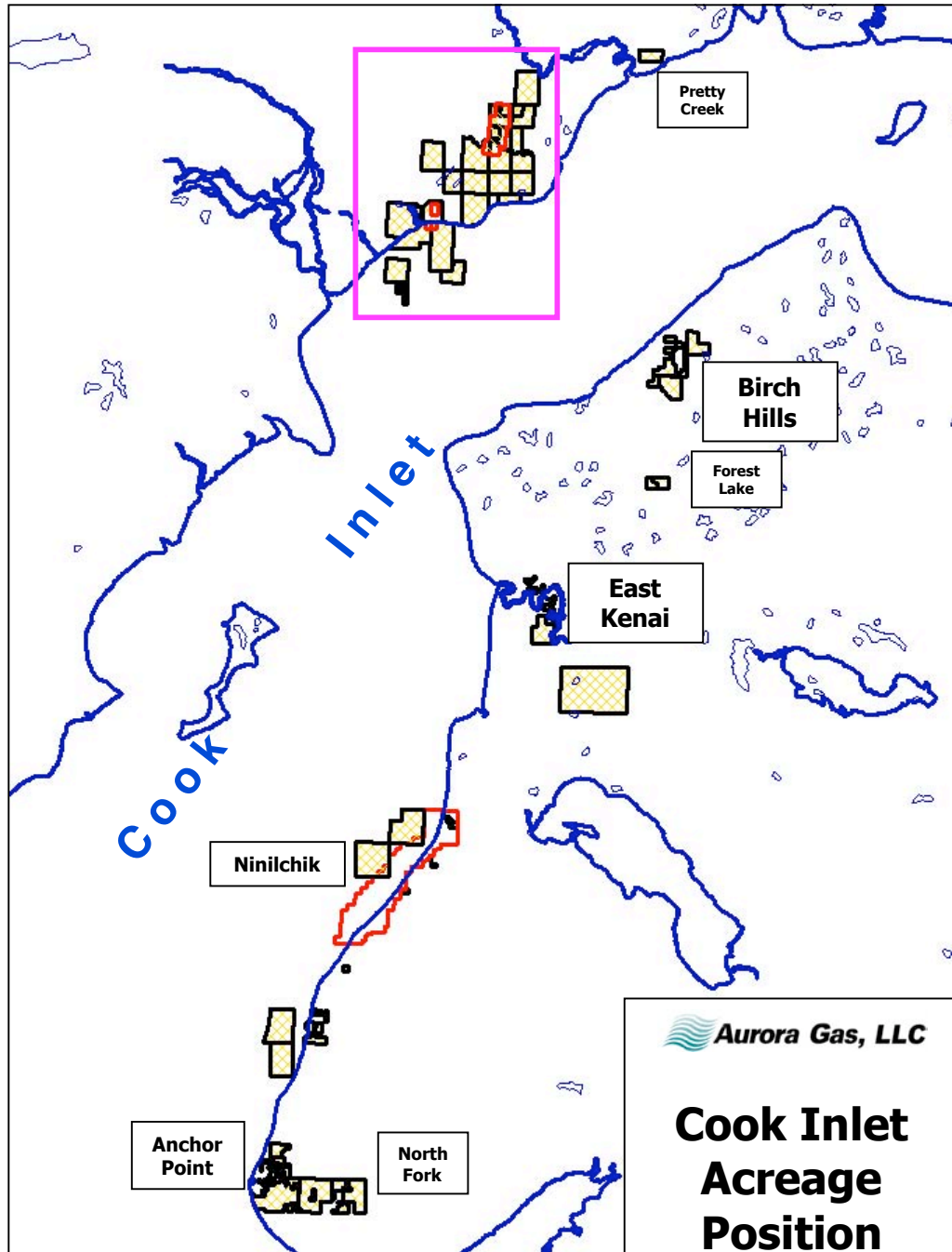


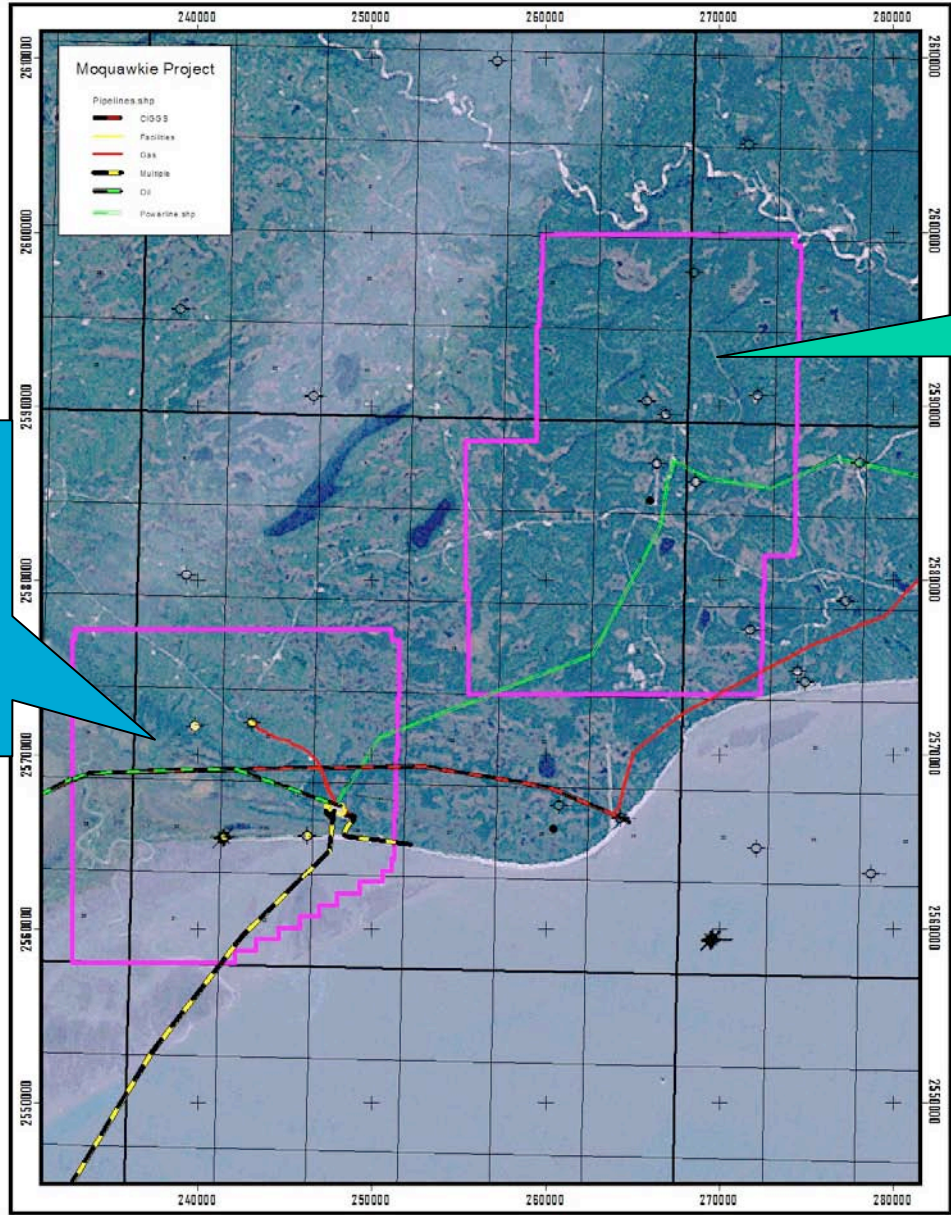
NCU #1b (sidetrack)



Lone Creek #1





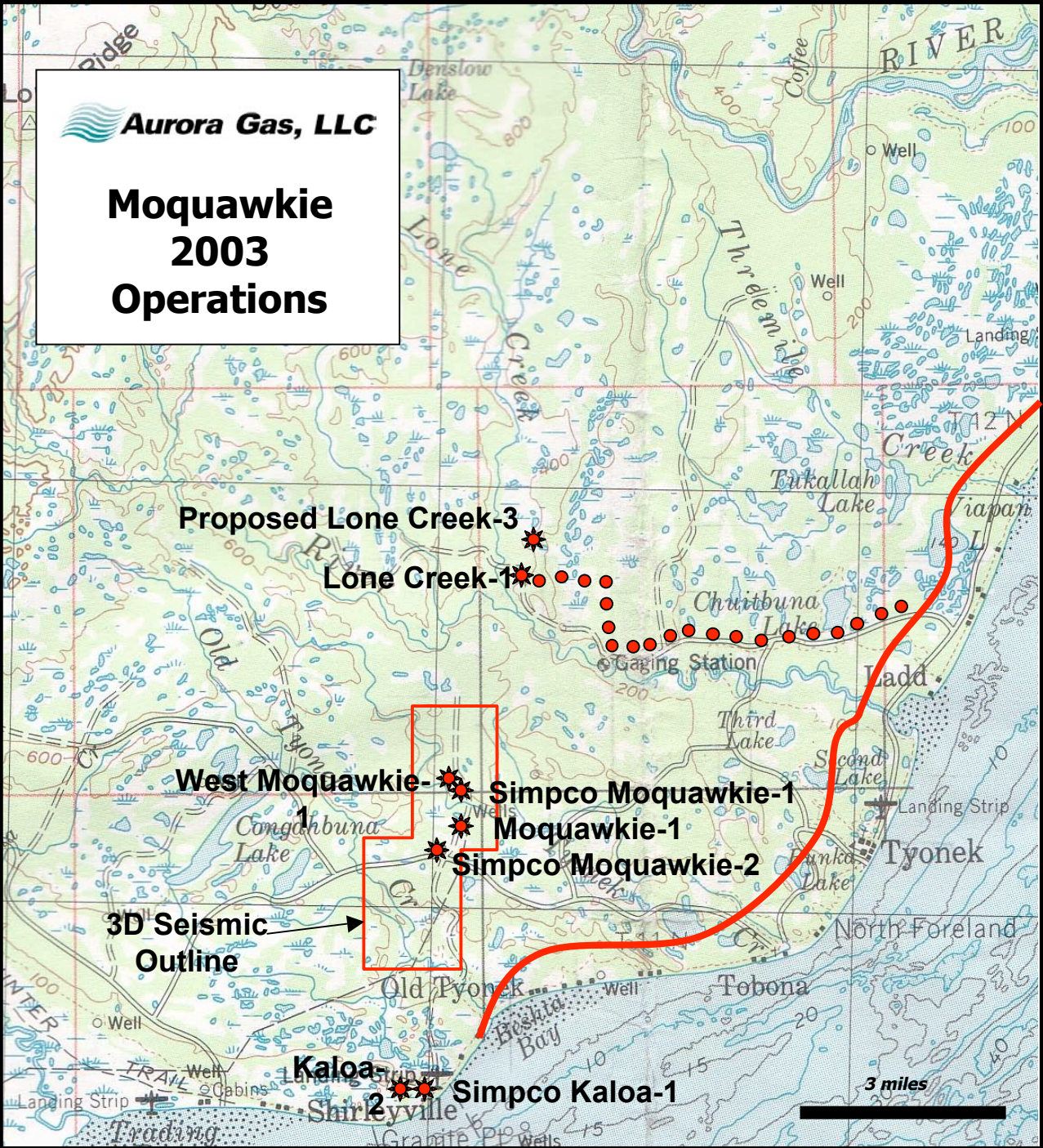


Moquawkie 3D Survey
15.66 Sq. Miles

Nicolai 3D Survey
Original Plan:
11.83 Sq. Miles
Final Plan:
~9 Sq. Miles

Contractor:
Fairweather Geo.
Subcontractors:
Extreme Surveys
Bertram Drilling
Veritas DGC

Crew was housed In:
Veco Camp
Tyonek Village
Shirleyville



Aurora Gas, LLC
Moquawkie
2003
Operations

Proposed Lone Creek-3

Lone Creek-1

West Moquawkie-1

Simpcó Moquawkie-1

Moquawkie-1

Simpcó Moquawkie-2

**3D Seismic
Outline**

Kaloa-1

Simpcó Kaloa-1

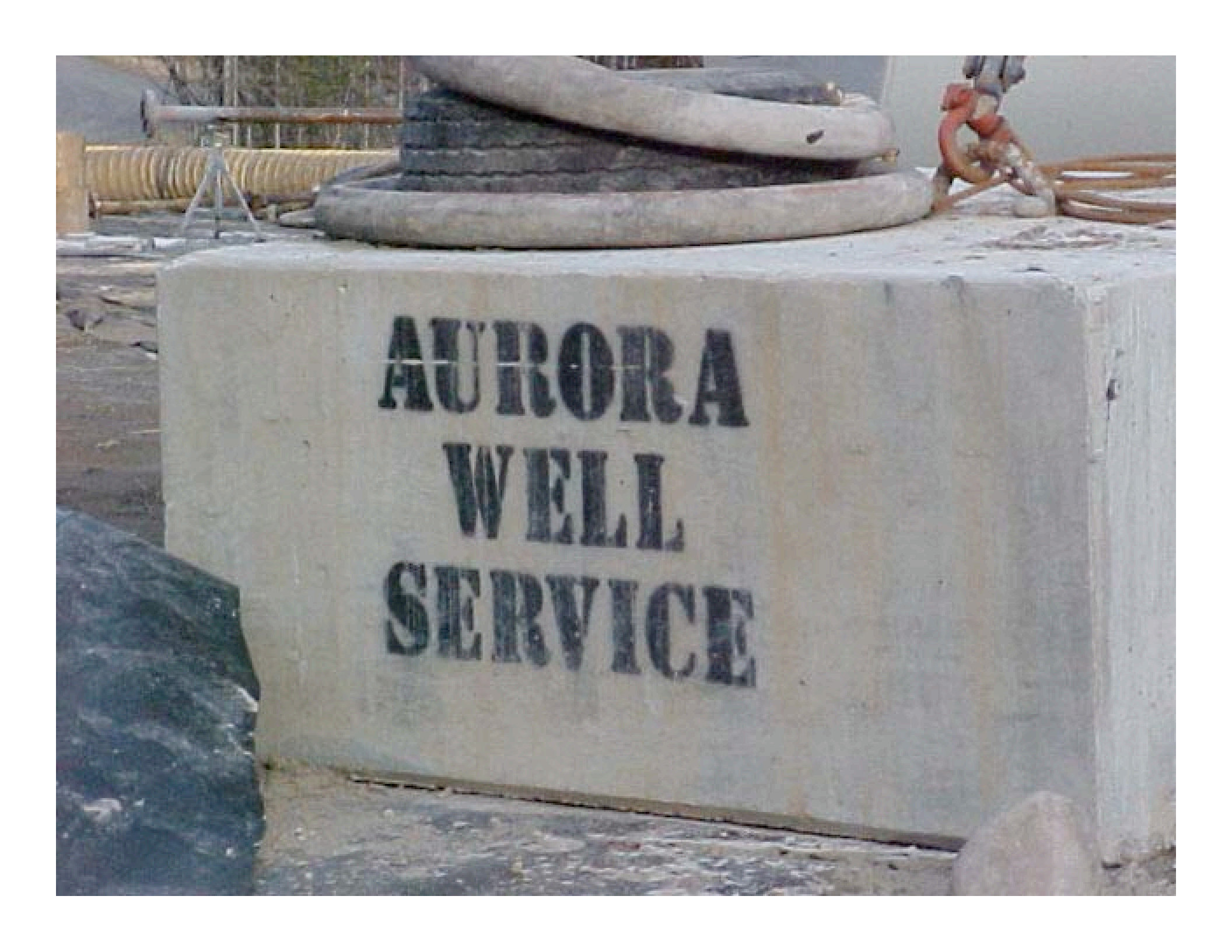
3 miles





Lone Creek Production Facility



A photograph of a concrete block with the text "AURORA WELL SERVICE" stenciled on it in three lines. The block is light-colored and sits on a concrete surface. In the background, there are various pieces of equipment, including a large coil of yellow hose on a stand, a stack of dark hoses, and other machinery. The scene appears to be an outdoor industrial or construction site.

**AURORA
WELL
SERVICE**

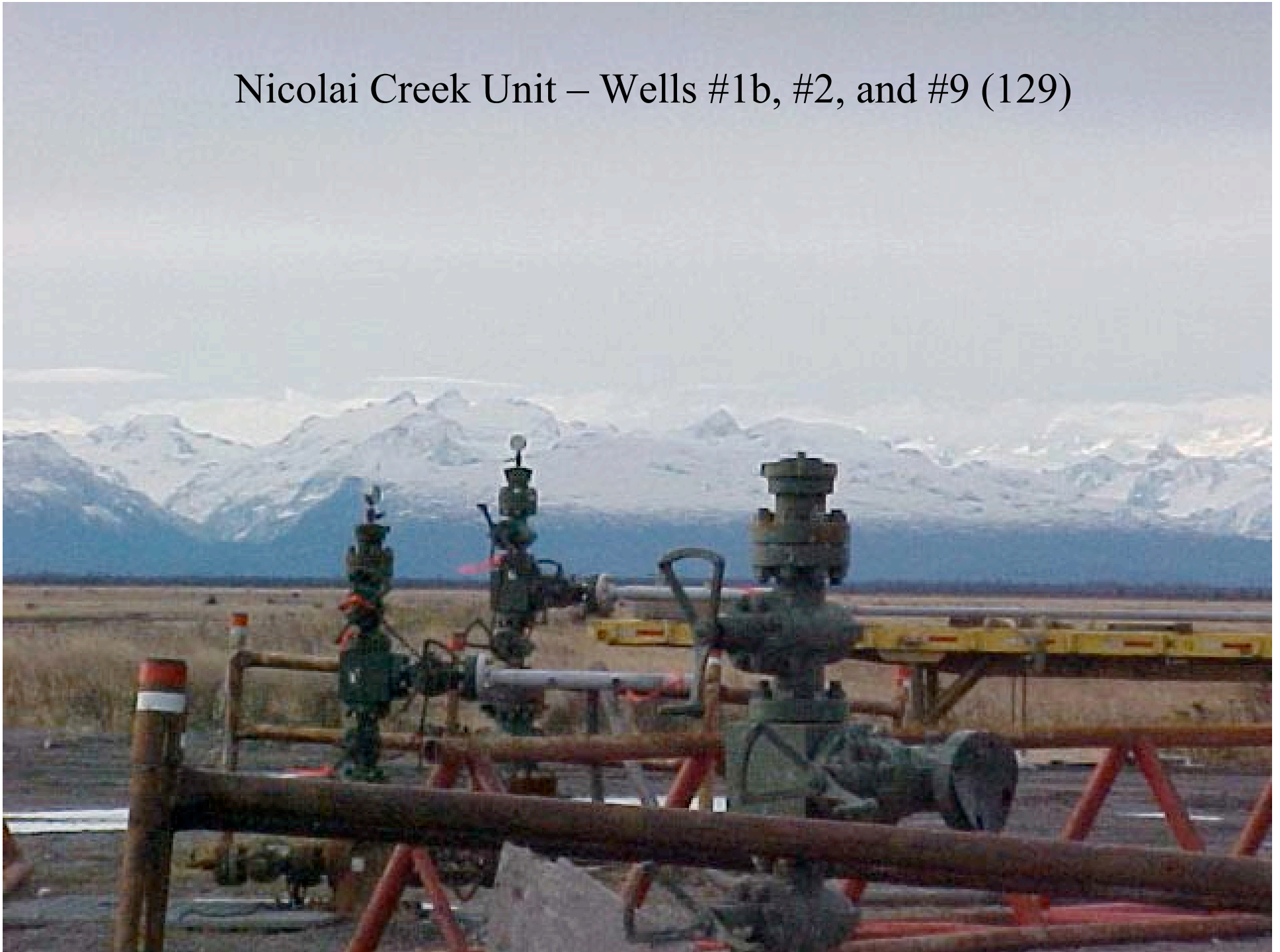
NCU #3



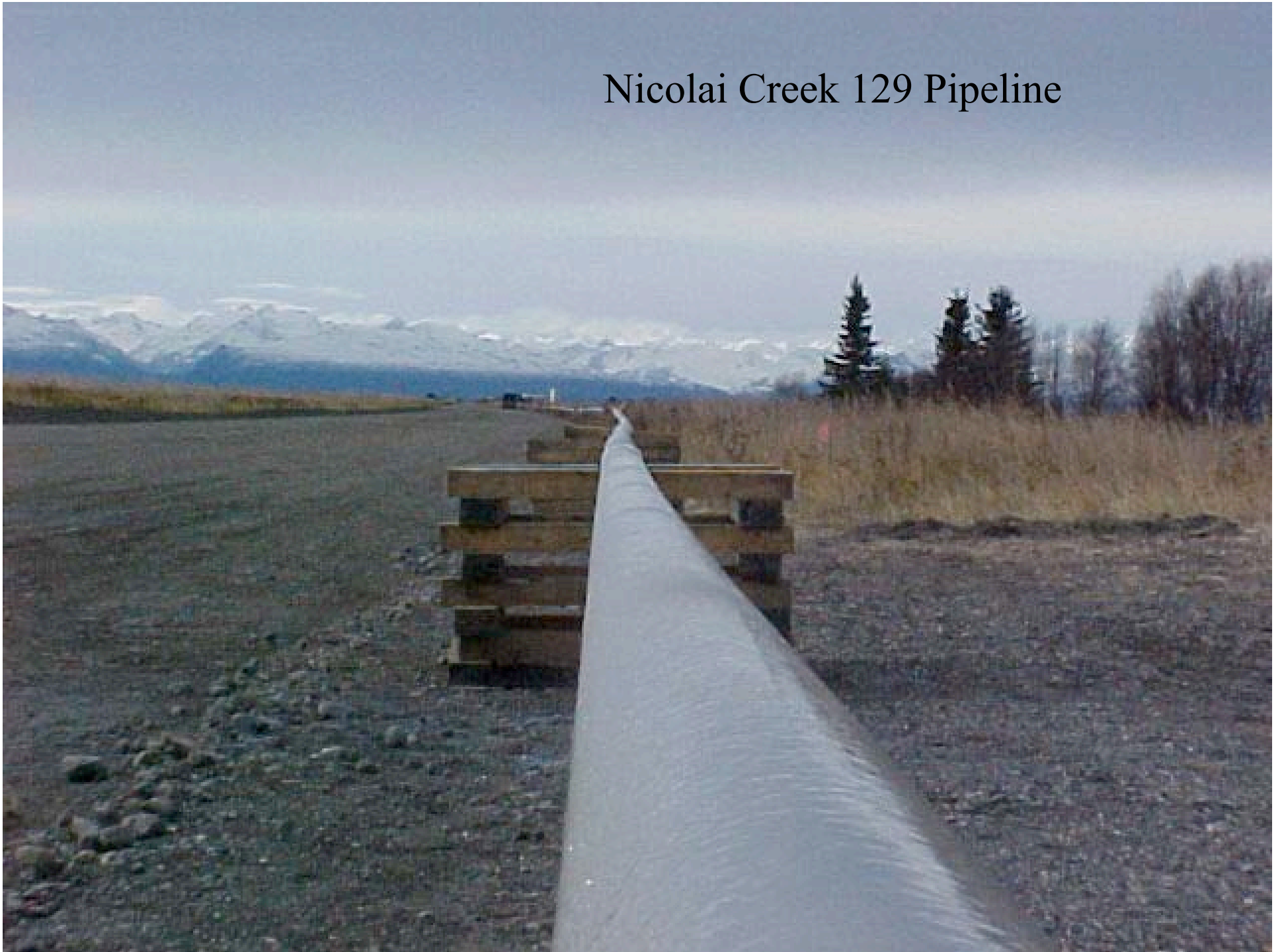
NCU #9



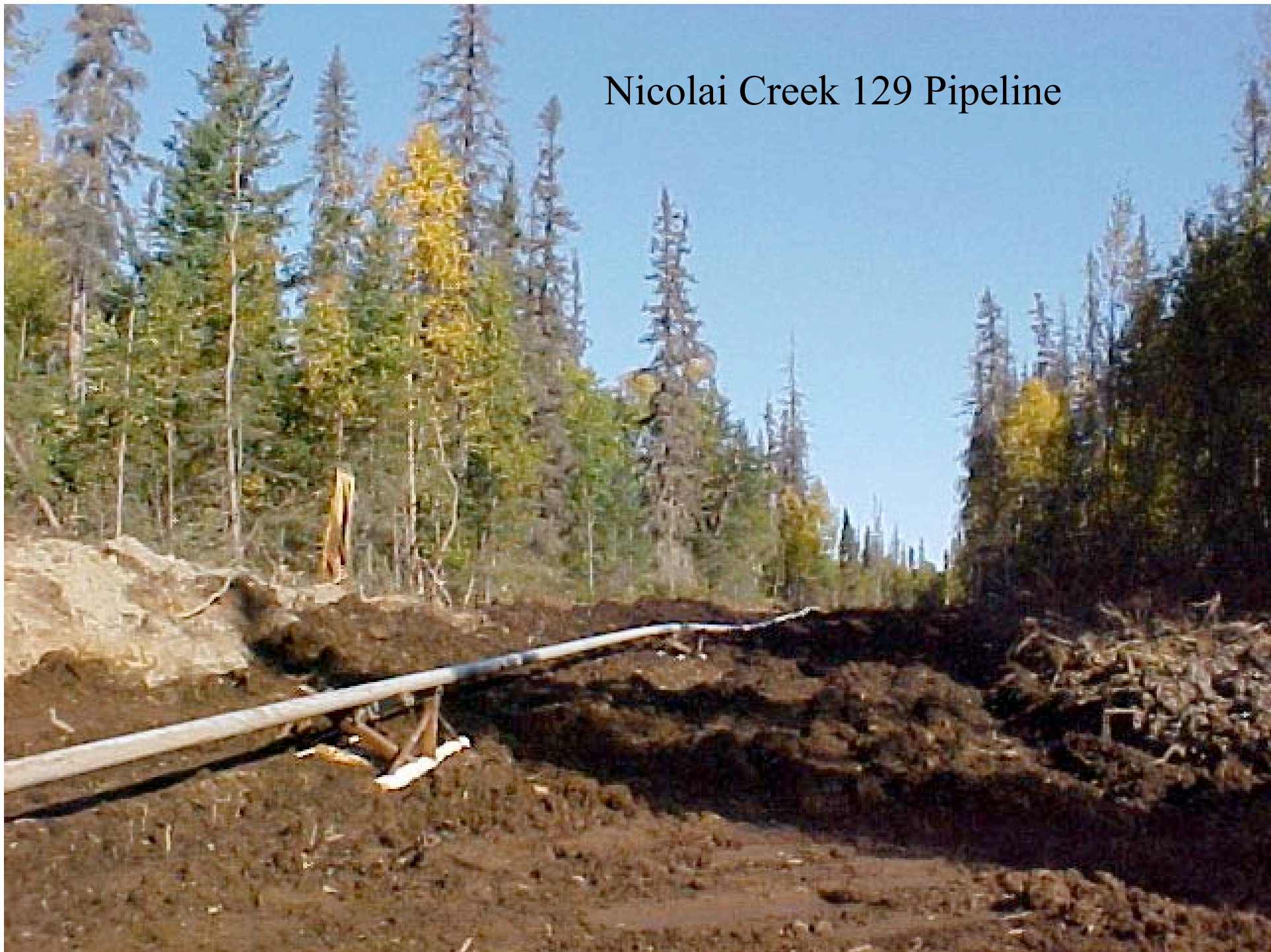
Nicolai Creek Unit – Wells #1b, #2, and #9 (129)



Nicolai Creek 129 Pipeline



Nicolai Creek 129 Pipeline

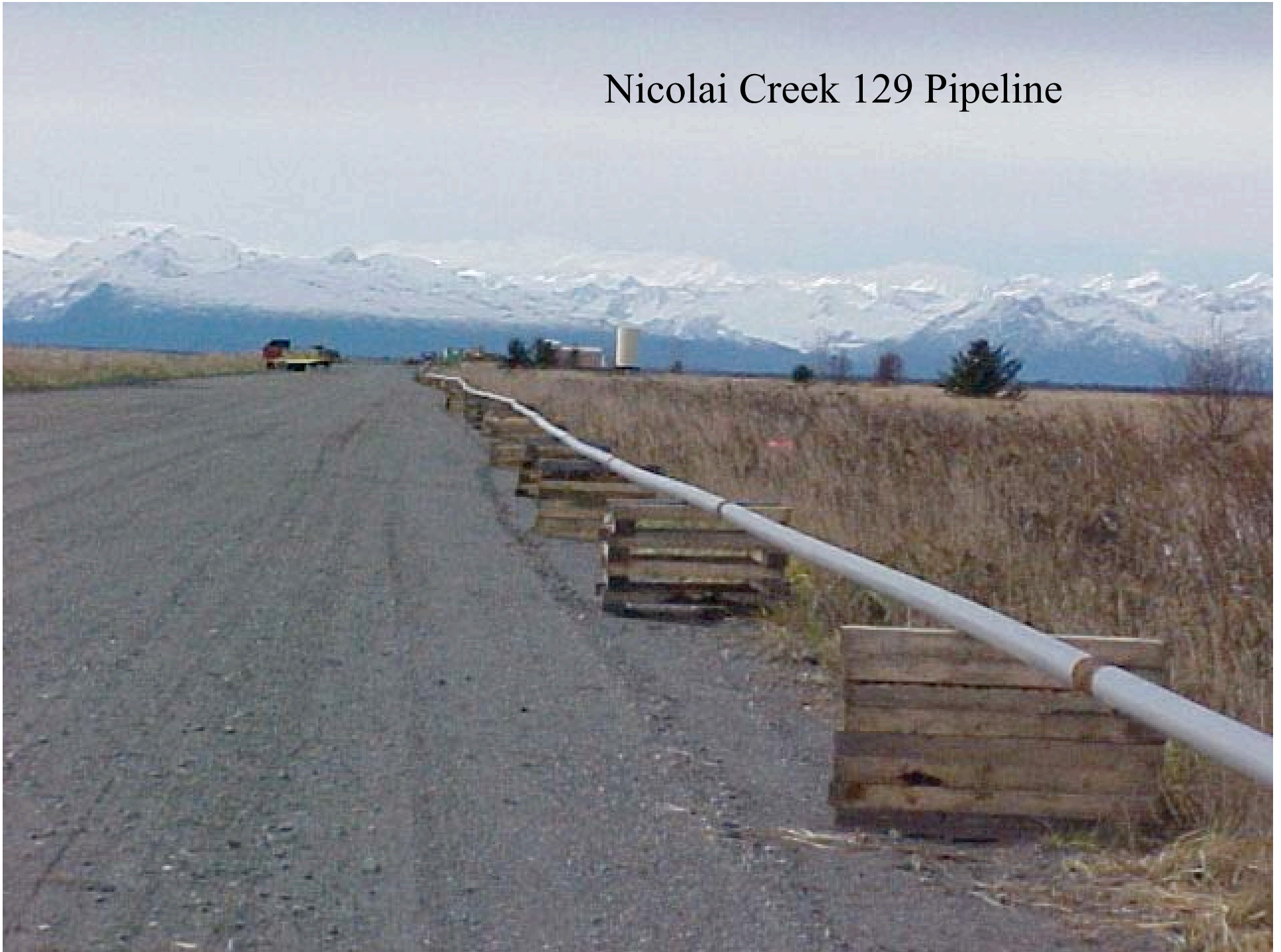




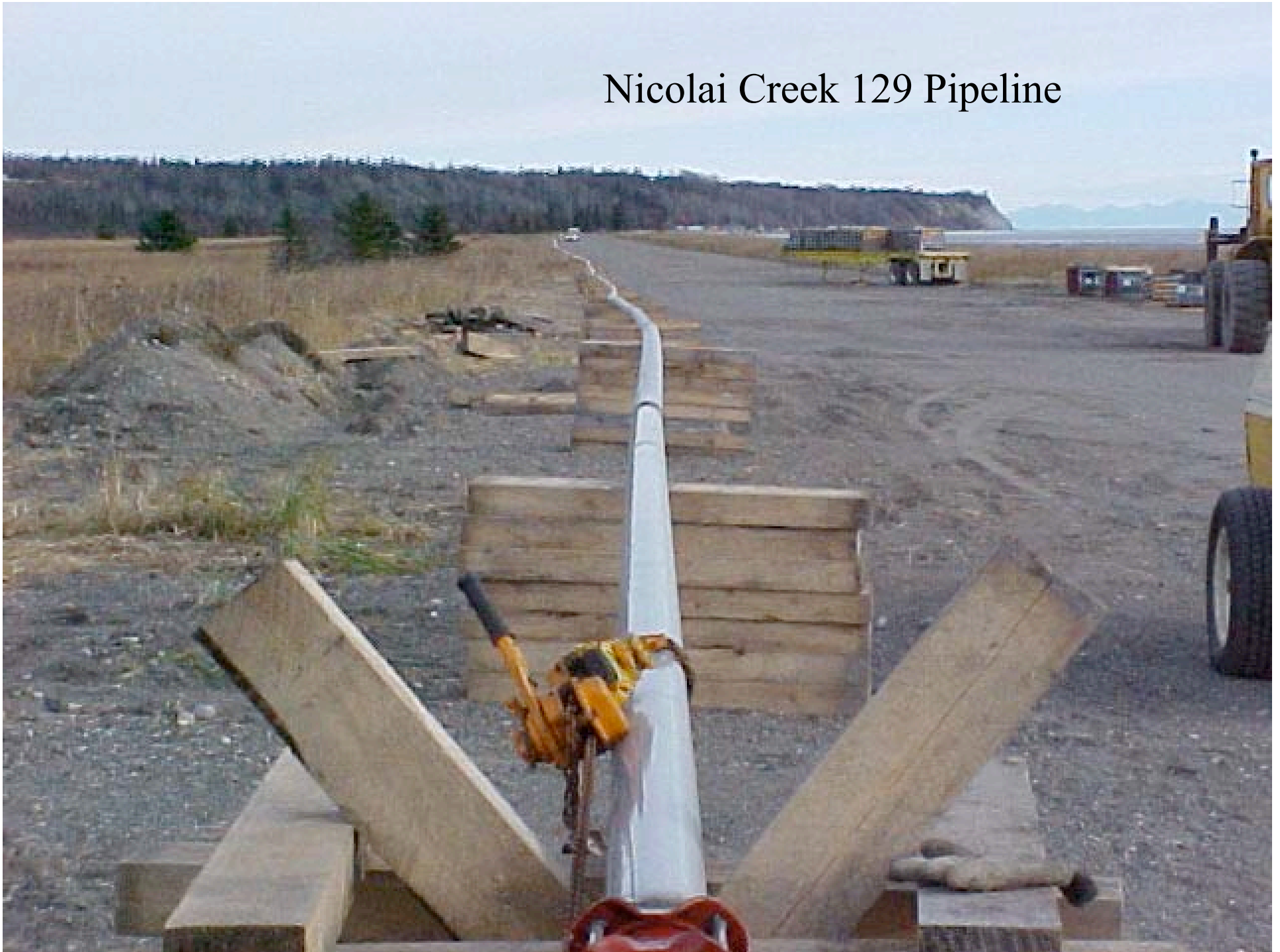
Nicolai Creek 129 Pipeline



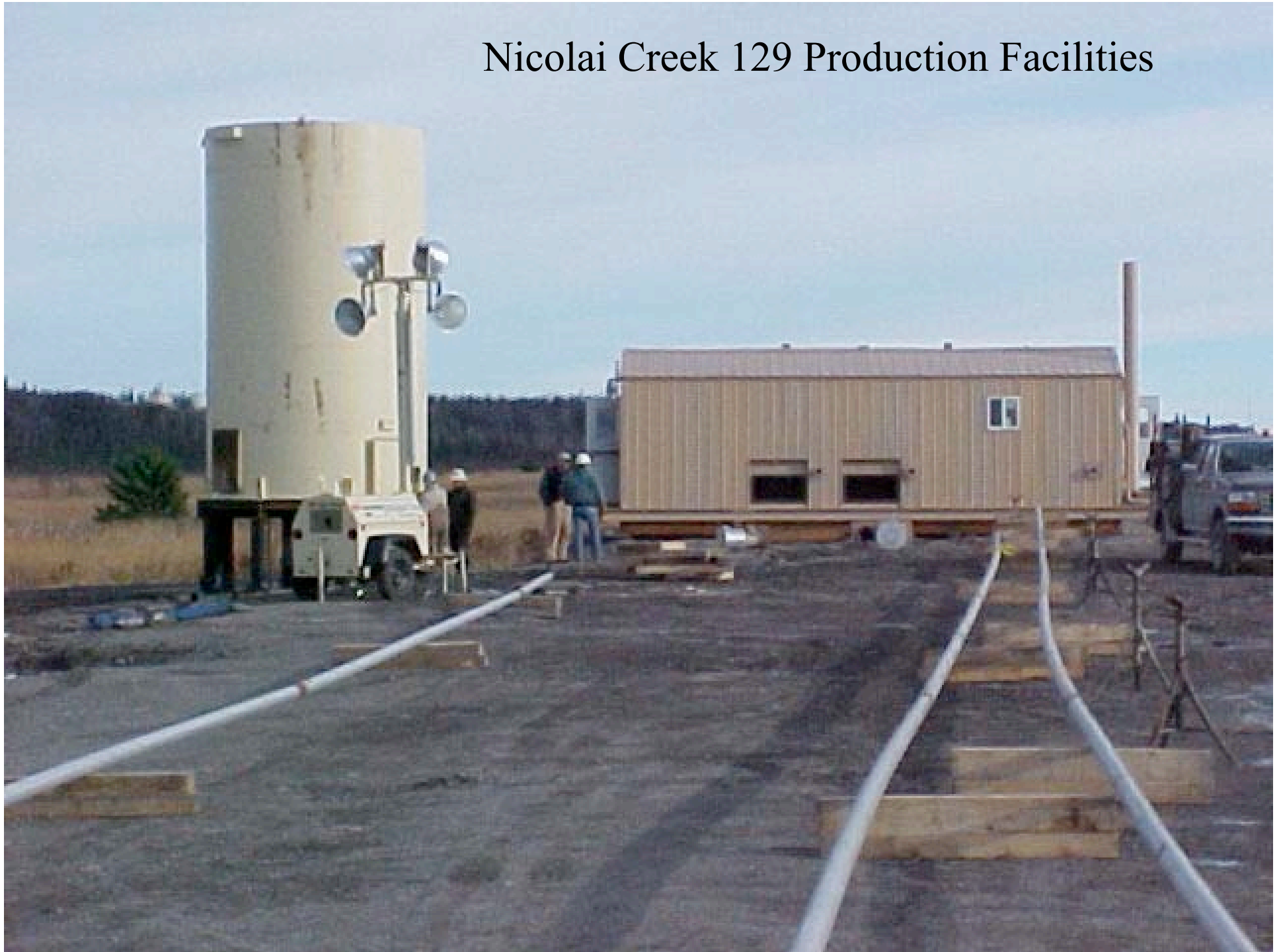
Nicolai Creek 129 Pipeline



Nicolai Creek 129 Pipeline

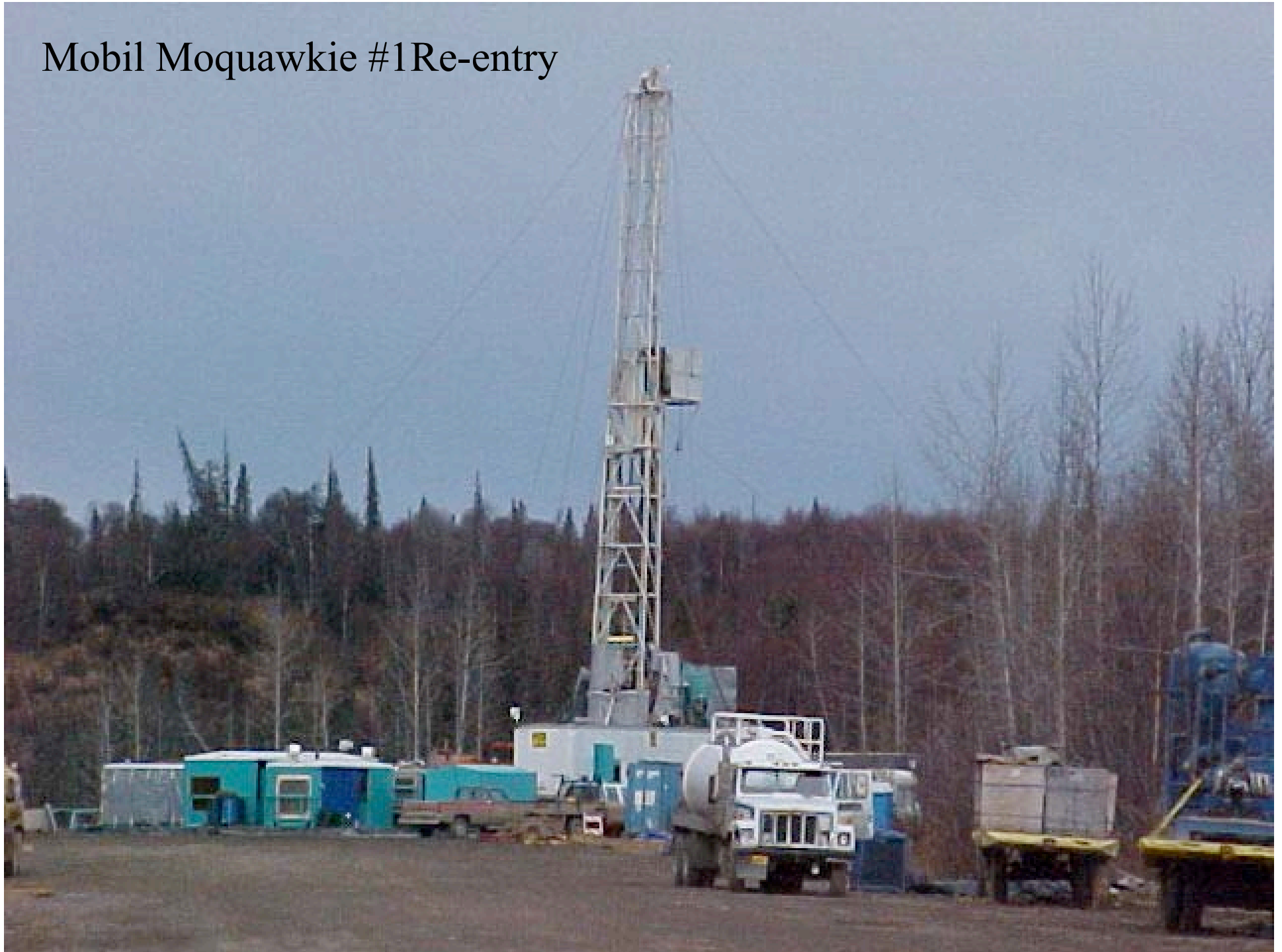


Nicolai Creek 129 Production Facilities





Mobil Moquawkie #1 Re-entry





Proposed 2004 2D Seismic Program

