



EVERGREEN RESOURCES, INC.

RDC Conference

November 21, 2002

What Exactly is Unconventional Gas?

The definition continues to evolve as technology and reservoir understanding continues to improve.

Certainly Coal Bed Methane applies.

Certain Tight Gas Sand plays and projects qualify.

Conventional Gas:	Relatively hard to find; Relatively easy to produce.
-------------------	---

Unconventional Gas:	Relatively easy to find; Relatively hard to produce. Very process intensive.
---------------------	--

Our Niche: Rockies and Unconventional Gas!

Focused on Coal Bed Methane Opportunities

Recognized CBM Technology Leader

Completely Integrated Approach to CBM Development
Operations & Services & Infrastructure

Main Drilling Project: Raton Basin CBM

Unevaluated Projects: Alaska CBM
Deep Raton Tight Gas

New Completion Technology

EVERGREEN



Raton Basin

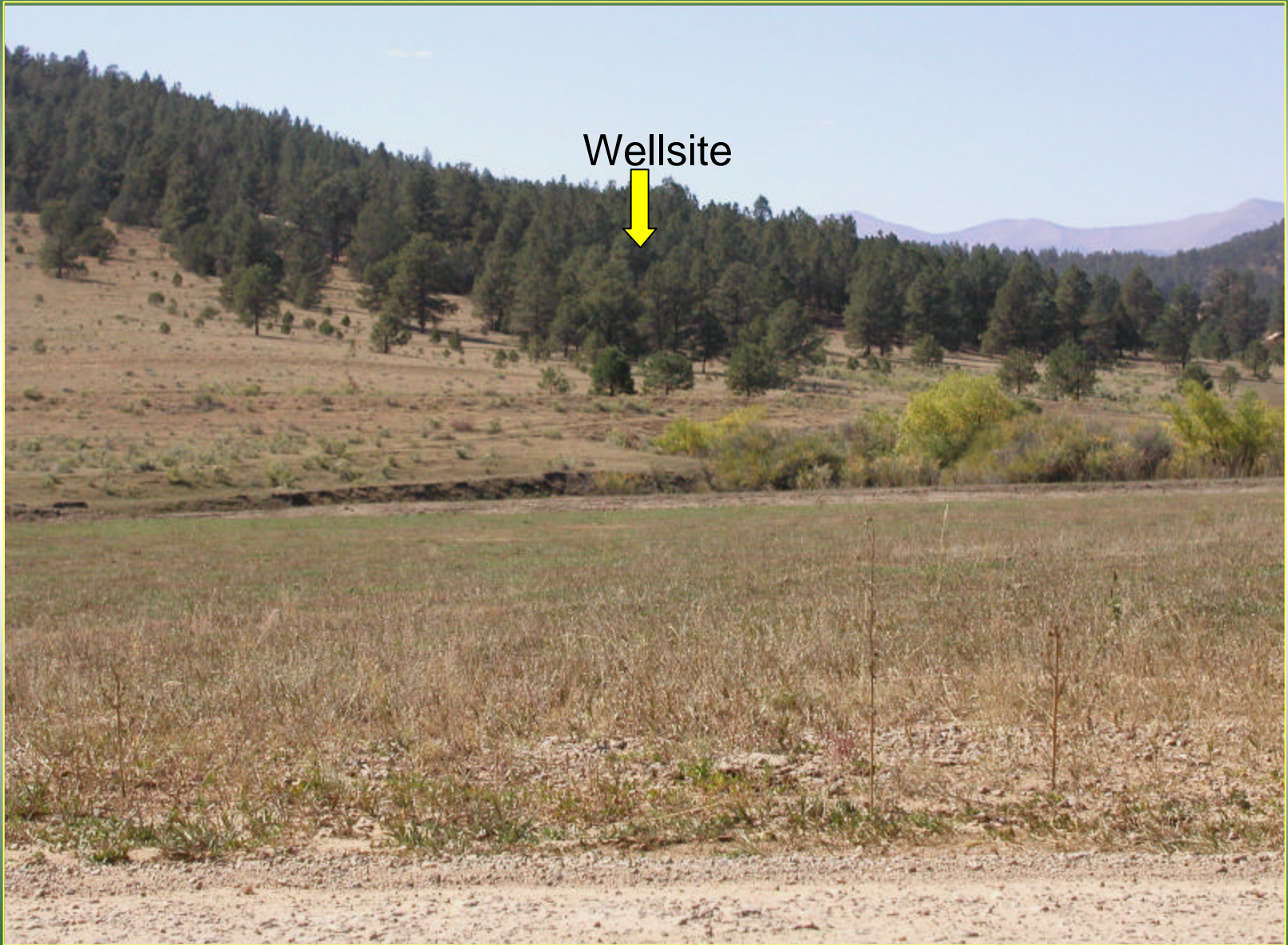


Water Management - Landowner Pond

(Approved by COGCC)











20 3 2002

Production – Combo 2-Phase Gas/Water Separator & Gas Meter





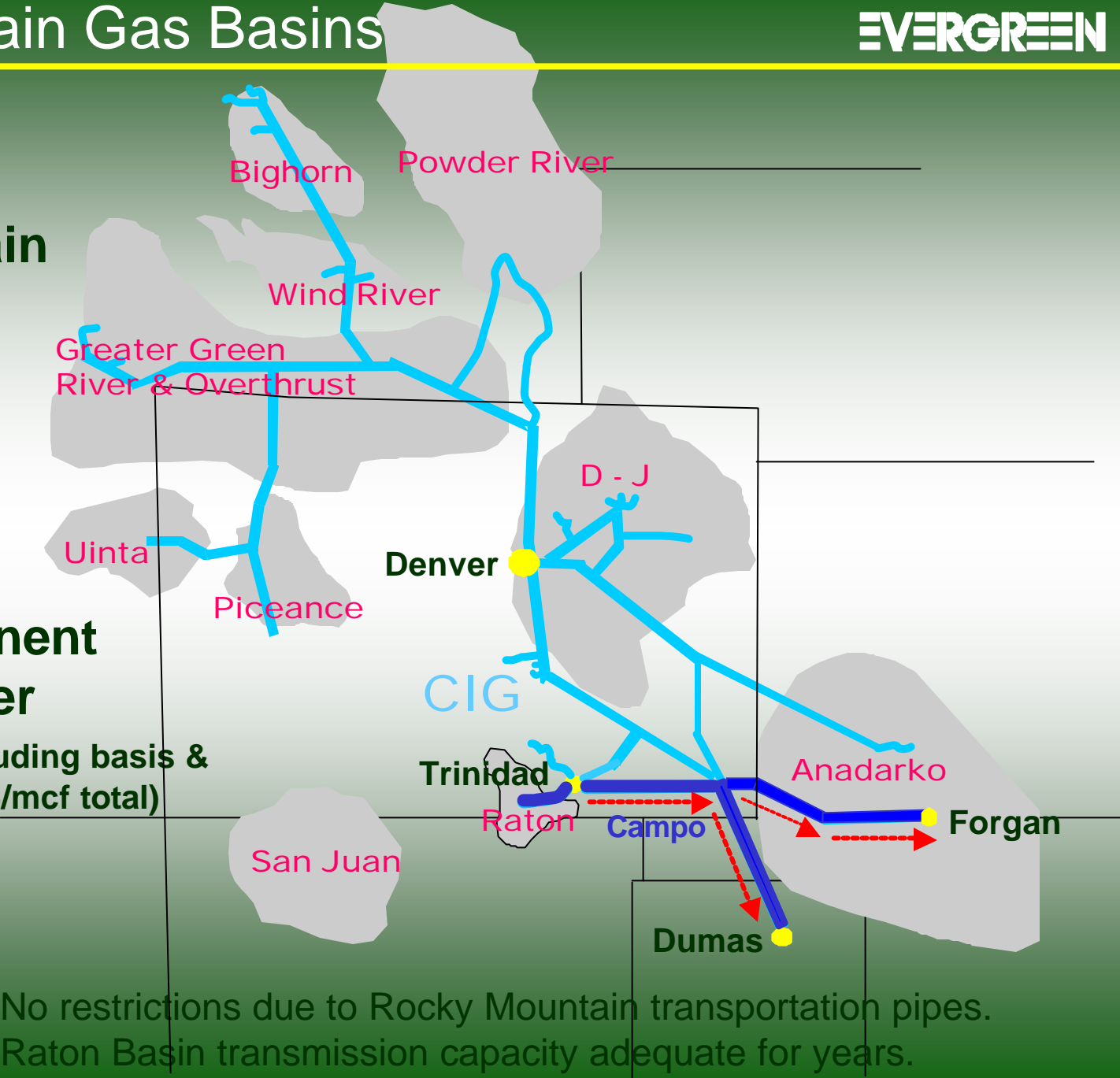
Rocky Mountain Gas Basins



**Rocky Mountain
Producer**

**Mid-Continent
Marketer**

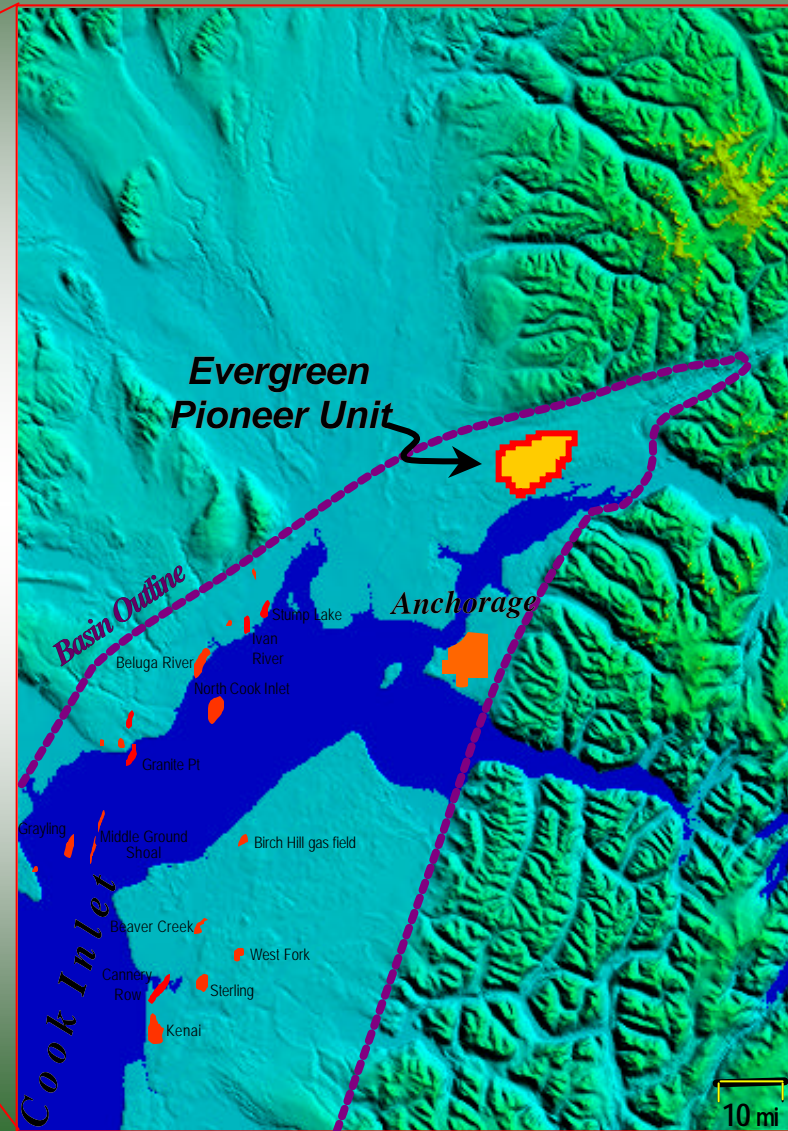
(Δ from NYMEX, including basis & fuel, is about \$0.35/mcf total)



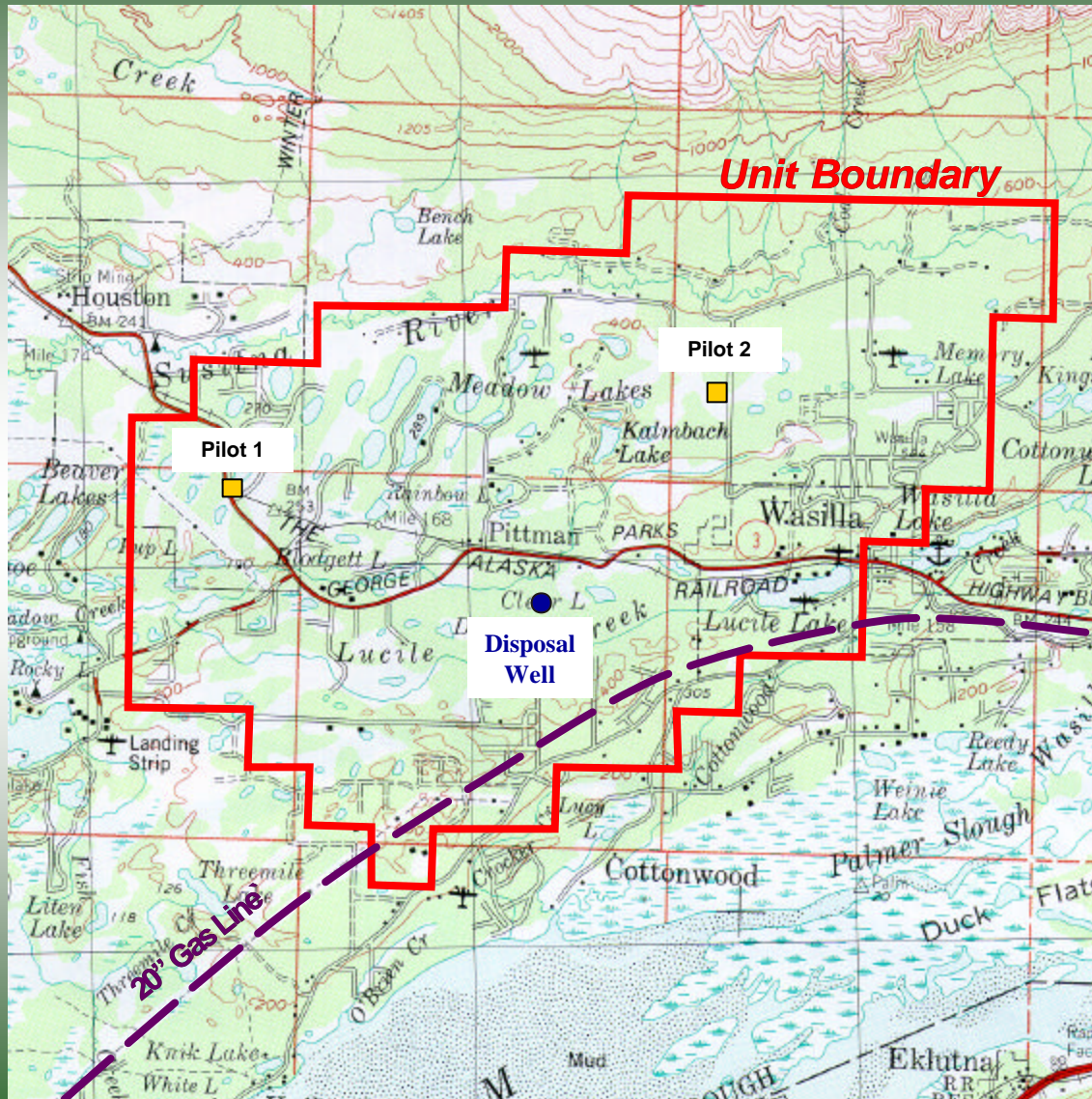
No restrictions due to Rocky Mountain transportation pipes.
Raton Basin transmission capacity adequate for years.



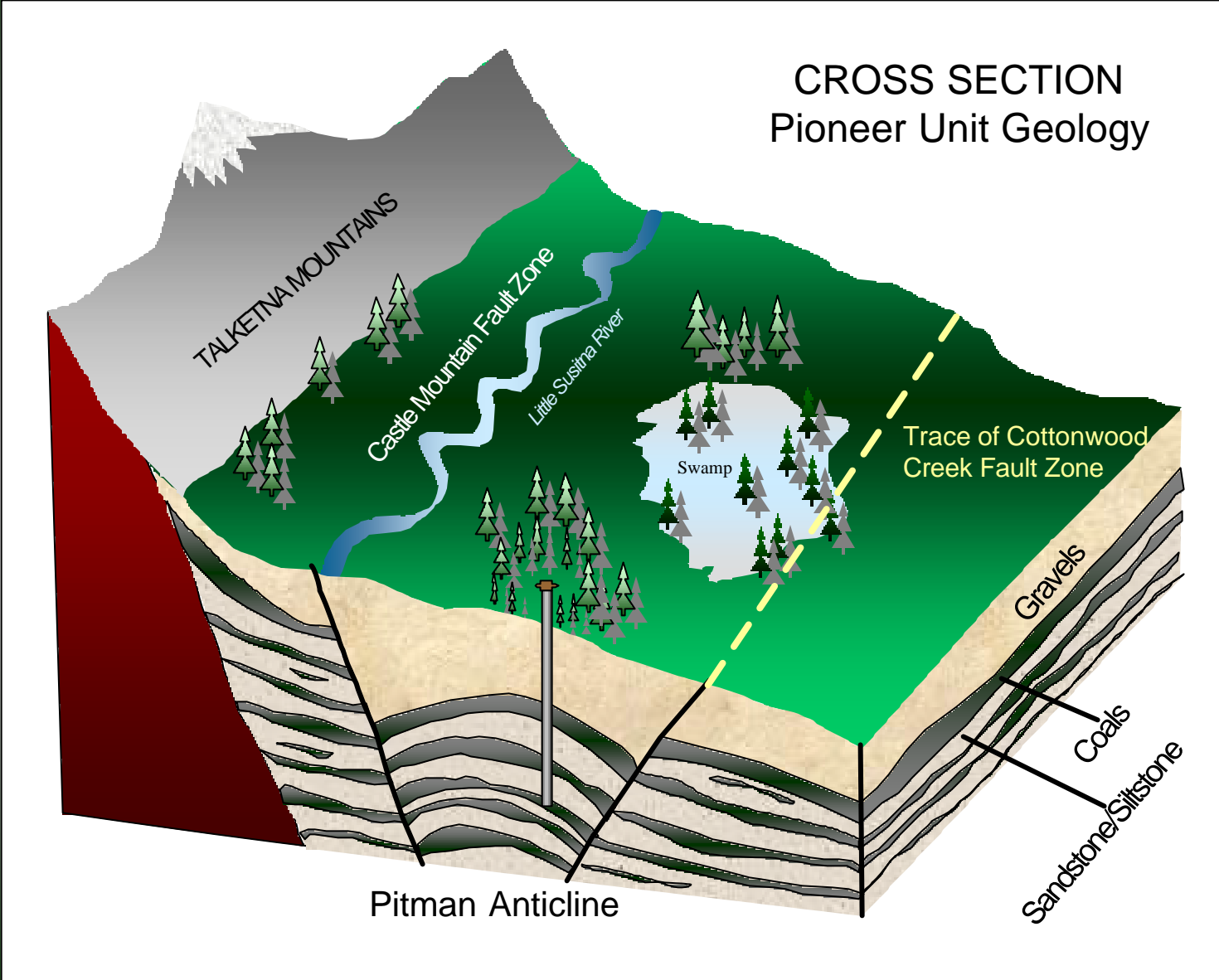
- Alaska has half of the known coal resources of the USA.
- More than 1,000 TCF in coal bed methane resource is associated with these extensive coal groups.



- Established Conventional Gas:
 - Discovered 1957
 - Existing infrastructure
 - Declining gas supply in this region
 - 6.2 Tcf produced to date
- Cook Inlet Basin Resource
 - 1.5 trillion tons coal possible
 - 200 Tcf CBM resource possible
- Evergreen Acquires Pioneer Unit in 2001



- 70,000+ acres
- 100% working interest
- Infrastructure & Market
 - Gas pipeline nearby
 - Conventional gas supplies declining near Anchorage
- Previous drilling in 2000 by others:
 - 2 CBM, 1 SWD
 - 1 Gas Well Re-entry
- EVG's 2002 Plans
 - Drill & Complete 8 wells
 - Complete Disposal Well



8 Well Drilling Program Starts 10/28/2002

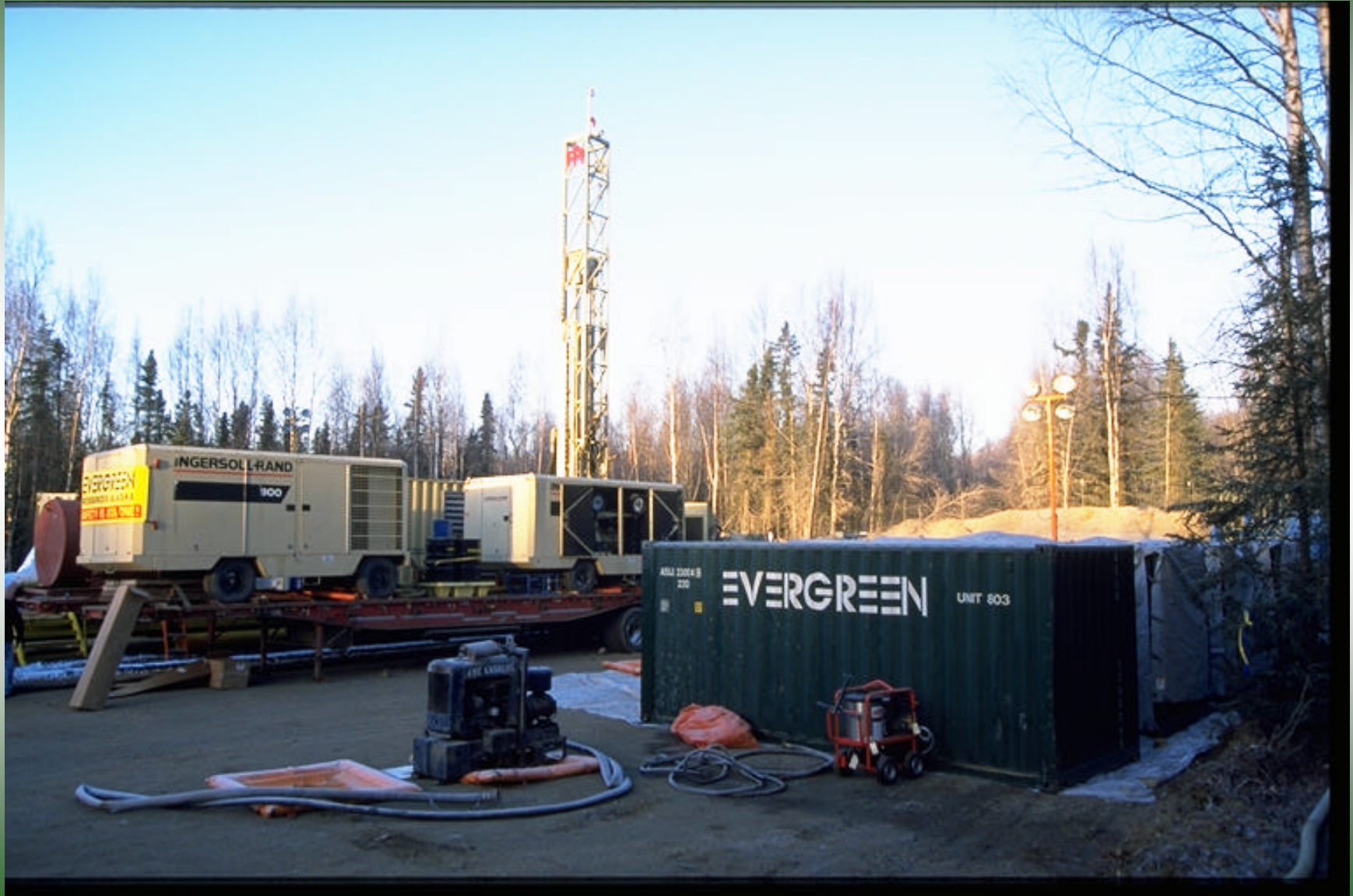
EVERGREEN



October 28, 2002

First Well: Baranof #1

EVERGREEN



October 29, 2002

Evergreen Imported Drill Rig

EVERGREEN



October 28, 2002

Drilling at Record Pace: Stromberg Well

EVERGREEN



November 18, 2002

Drilling at Record Pace: Stromberg Well

EVERGREEN



November 18, 2002

Drilling at Record Pace: Stromberg Well

EVERGREEN



November 18, 2002

Last Week: Stromberg Well (#6 in Program)

EVERGREEN



Stromberg Well: Ready for Completions

EVERGREEN



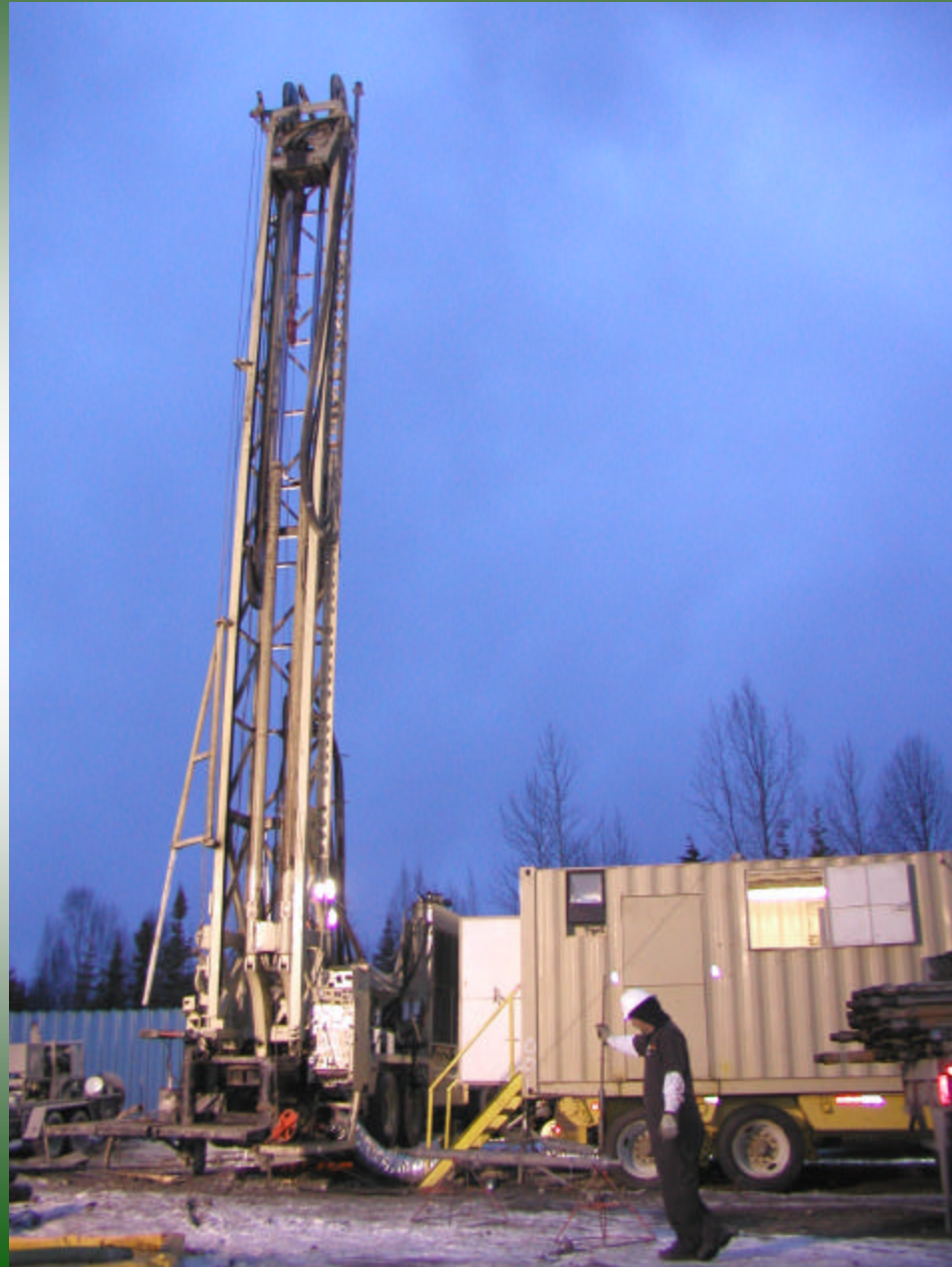
November 20, 2002

This Week: DL Smith #1 (#7 in 3 week period) EVERGREEN



November 20, 2002

This Week: DL Smith #1 (#7 in 3 week period) EVERGREEN



November 20, 2002

This Week: DL Smith #1 (#7 in 3 week period) EVERGREEN



November 20, 2002

A 1 Bcf gas well disturbs one to one-half of an acre

The comparable amount of energy equivalent disturbs the following acreage

Wind Farm: 100-300 acres

Solar: 46 acres

Wood: 402 acres or 44,000 100' tall trees

Hydro: 267 1 Bcf wells saves one Glen Canyon Dam



Recognized Leader in Coal Bed Methane
Technology & Development

EVERGREEN RESOURCES, INC.