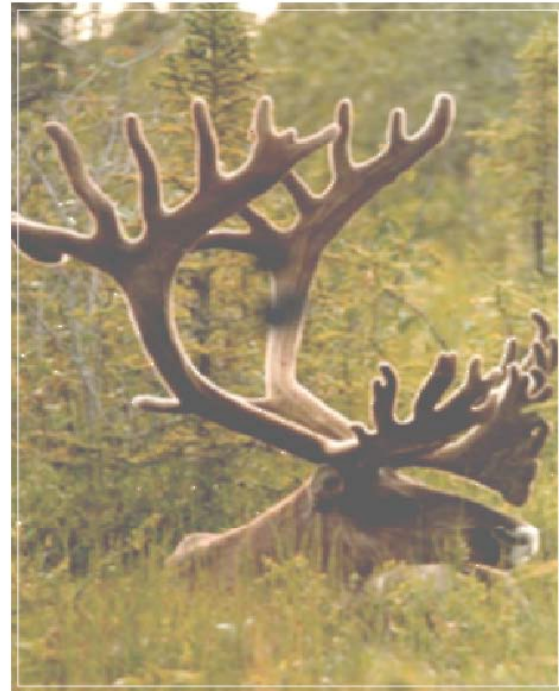


# ANDEX RESOURCES, L.L.C.

## NENANA BASIN

PRESENTED BY  
JIM DODSON

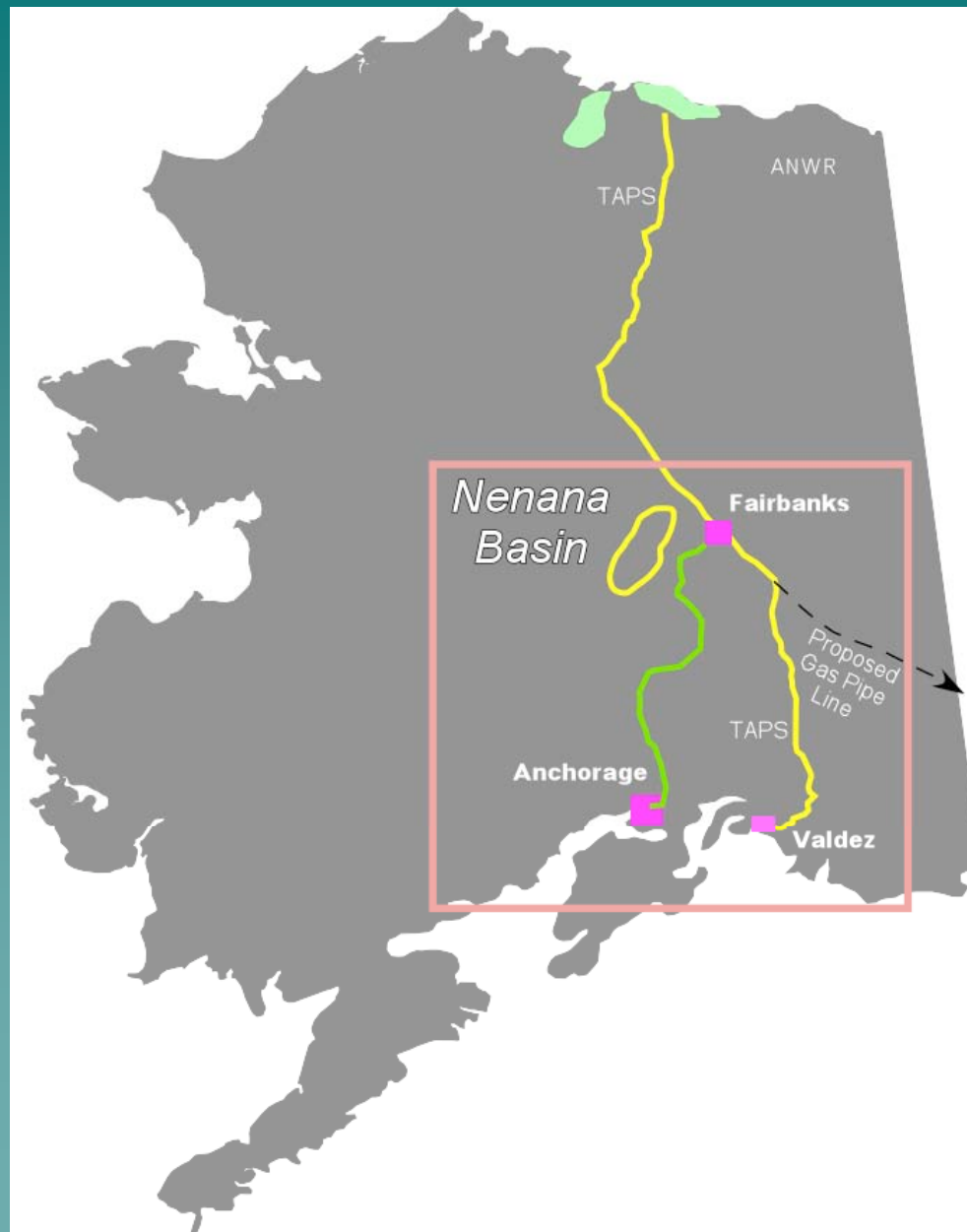
ANDEX  
RESOURCES, L.L.C.



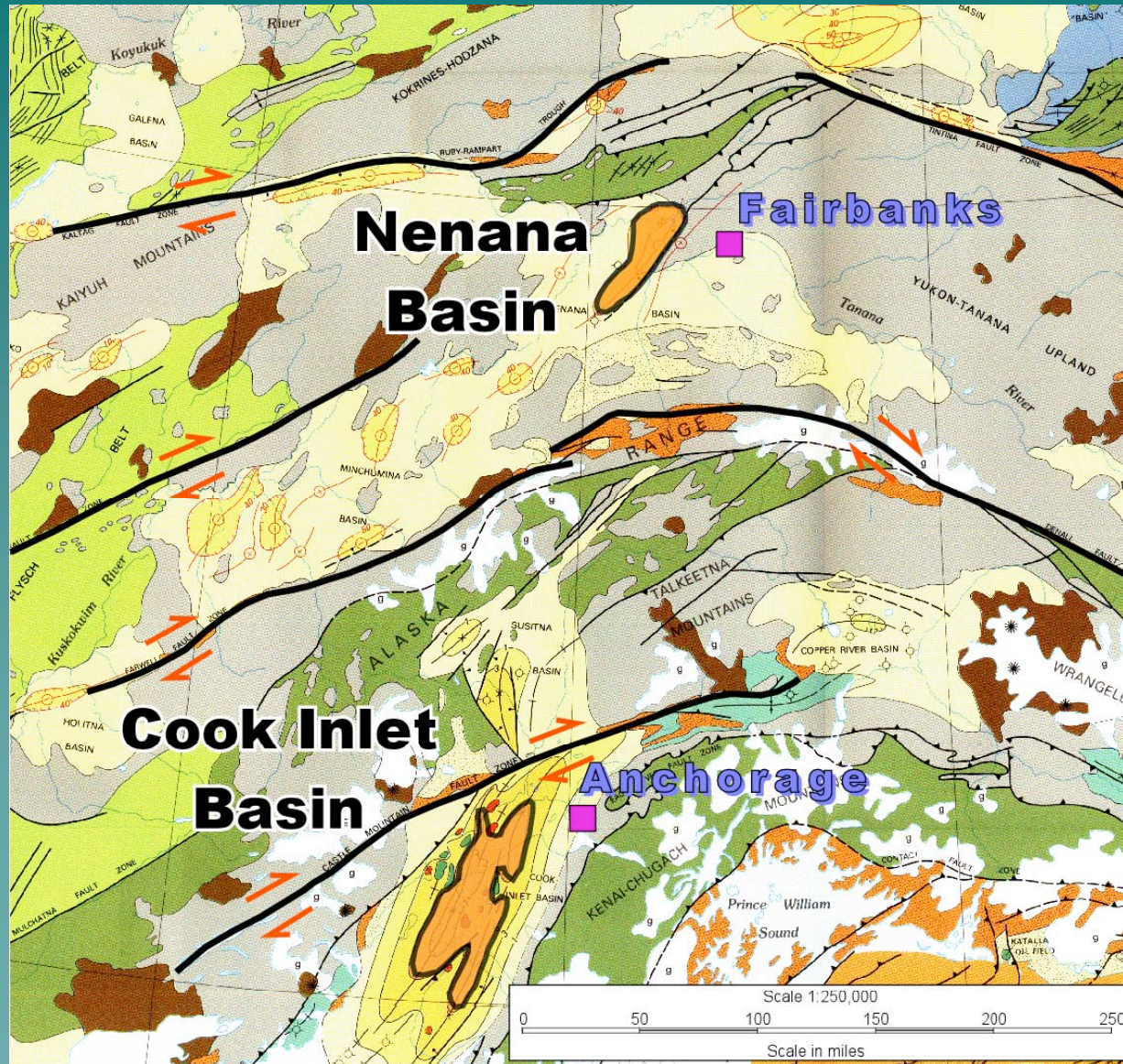
***NENANA BASIN EXPLORATION PROJECT***

Central Alaska  
Interior Basin

# LOCATION MAP



# SEDIMENTARY BASINS

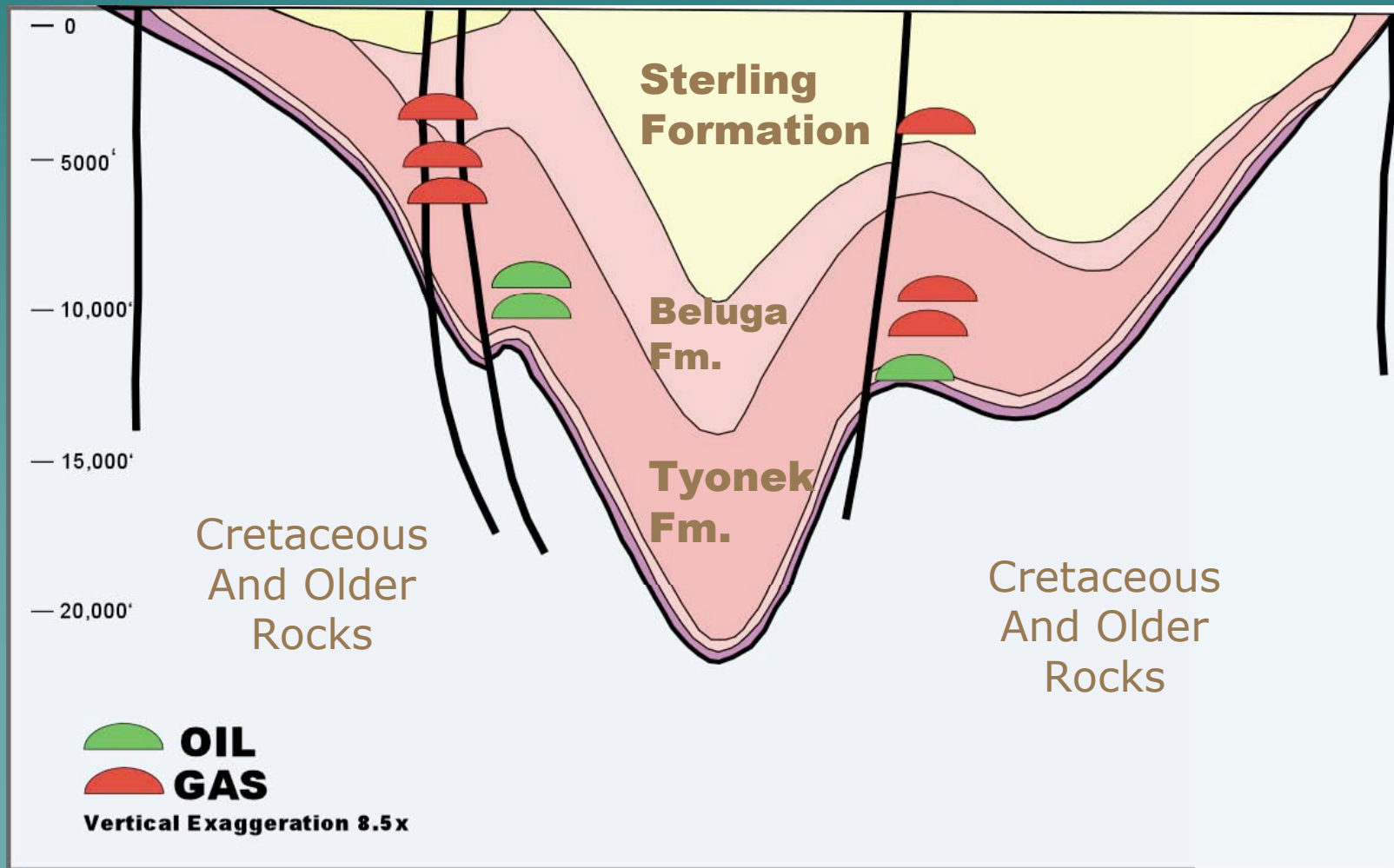


# COOK INLET DIAGRAMMATIC CROSS SECTION

Nicolai  
Field

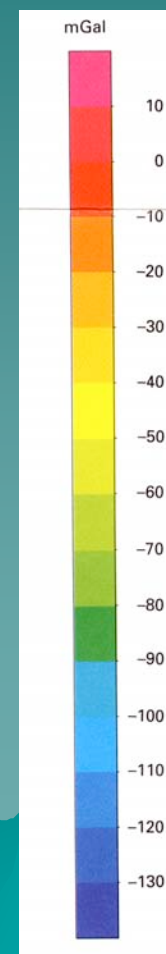
Granite Point  
Field

Swanson River  
Field



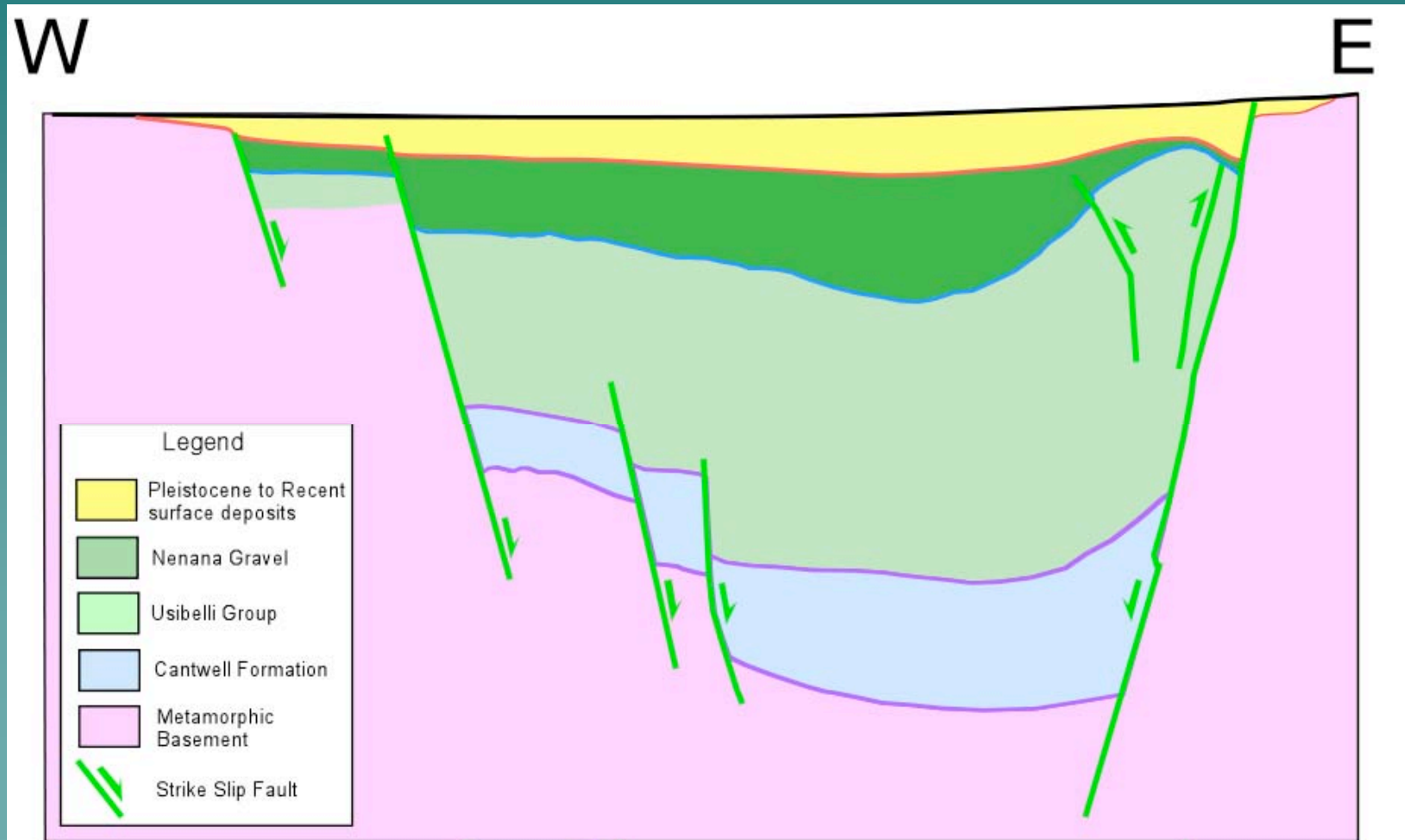
# Gravity

Fairbanks



# NENANA BASIN

## Diagrammatic Cross Section



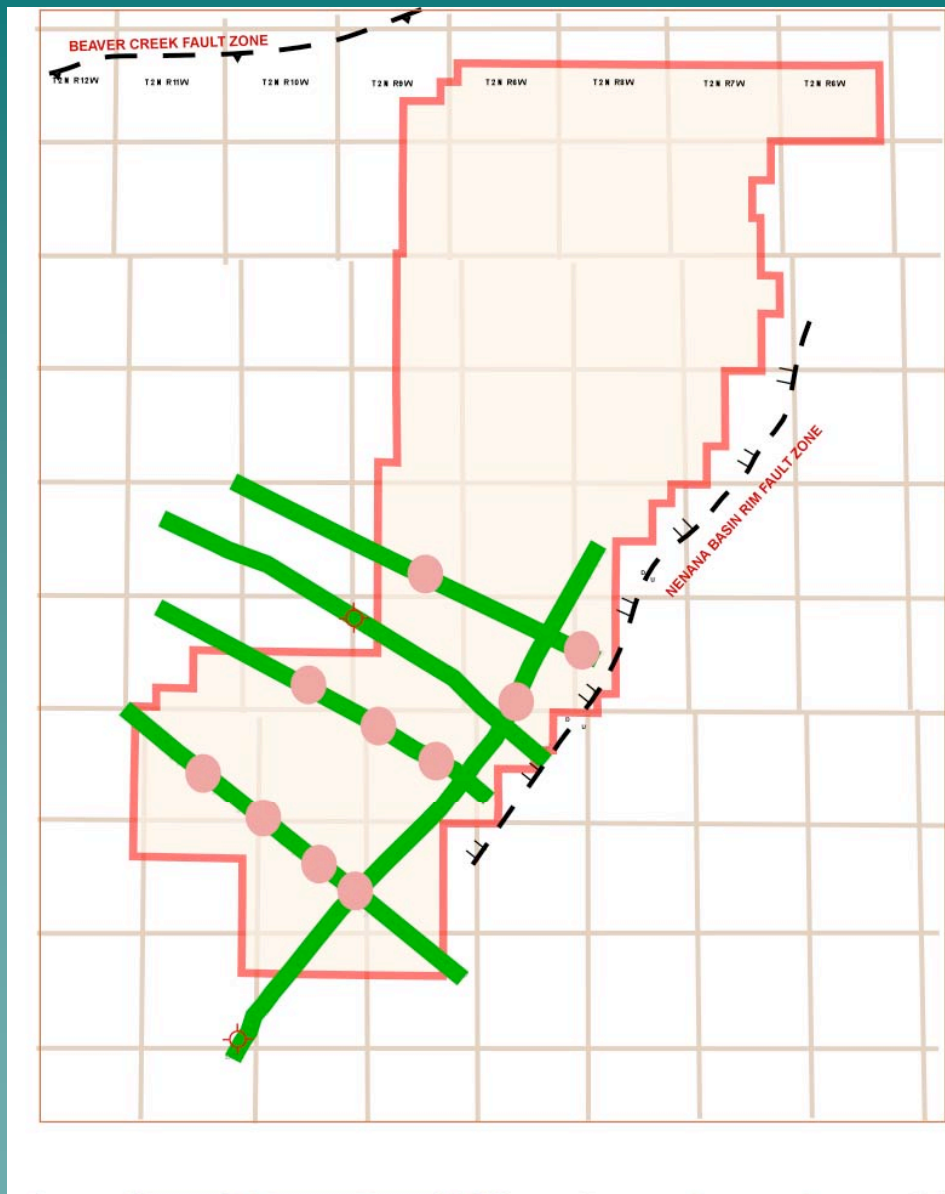
# KENAI GROUP

PLIOCENE	STERLING FORMATION
MIOCENE	BELUGA FORMATION
	TYONEK FORMATION
OLIGOCENE	HEMLOCK CNGL
	W. FORELAND FORMATION
EOCENE	
PALEO-CENE	CHICKALOON FORMATION

# USIBELLI GROUP

PLIOCENE	NENANA GRAVEL
MIOCENE	GRUBSTAKE FORMATION
	LIGNITE CR FORMATION
	SUNTRANA FM
	SANCTUARY FM
OLIGOCENE	HEALY CREEK FORMATION
EOCENE	
PALEO-CENE	CANTWELL FORMATION

# NENANA LICENSE AREA





# STATE OF ALASKA NENANA BASIN LICENSE

- ◆ **500,000 ACRES**
- ◆ **OCTOBER 1, 2002**
- ◆ **12.5% ROYALTY**
- ◆ **PRIMARY TERM: 7 YEARS**
- ◆ **LEASE OPTION: 7 YEARS**
- ◆ **WORK COMMITMENT: \$2,500,000**

# **FAIRBANKS GAS MARKET**

## **25 BCFG/YR 70 MMCFD**

- ◆ **HEATING : 5 BCFG**
- ◆ **ELECTRICITY : 7.5 BCFG**
- ◆ **MILITARY : 5 BCFG**
- ◆ **REFINERY : 7.5 BCFG**

# **NENANA BASIN PROJECT**

- ◆ **3 TCFG RISKED POTENTIAL**
- ◆ **550,000 ACRES**
- ◆ **14 YEAR TOTAL TERM**
- ◆ **STATE AND NATIVE LANDS**
- ◆ **MODERATE COST**
- ◆ **FAVORABLE BUSINESS CLIMATE**
- ◆ **EARLY CASH FLOW**
- ◆ **STRATEGIC**

# NENANA BASIN PROJECT TIME LINE

