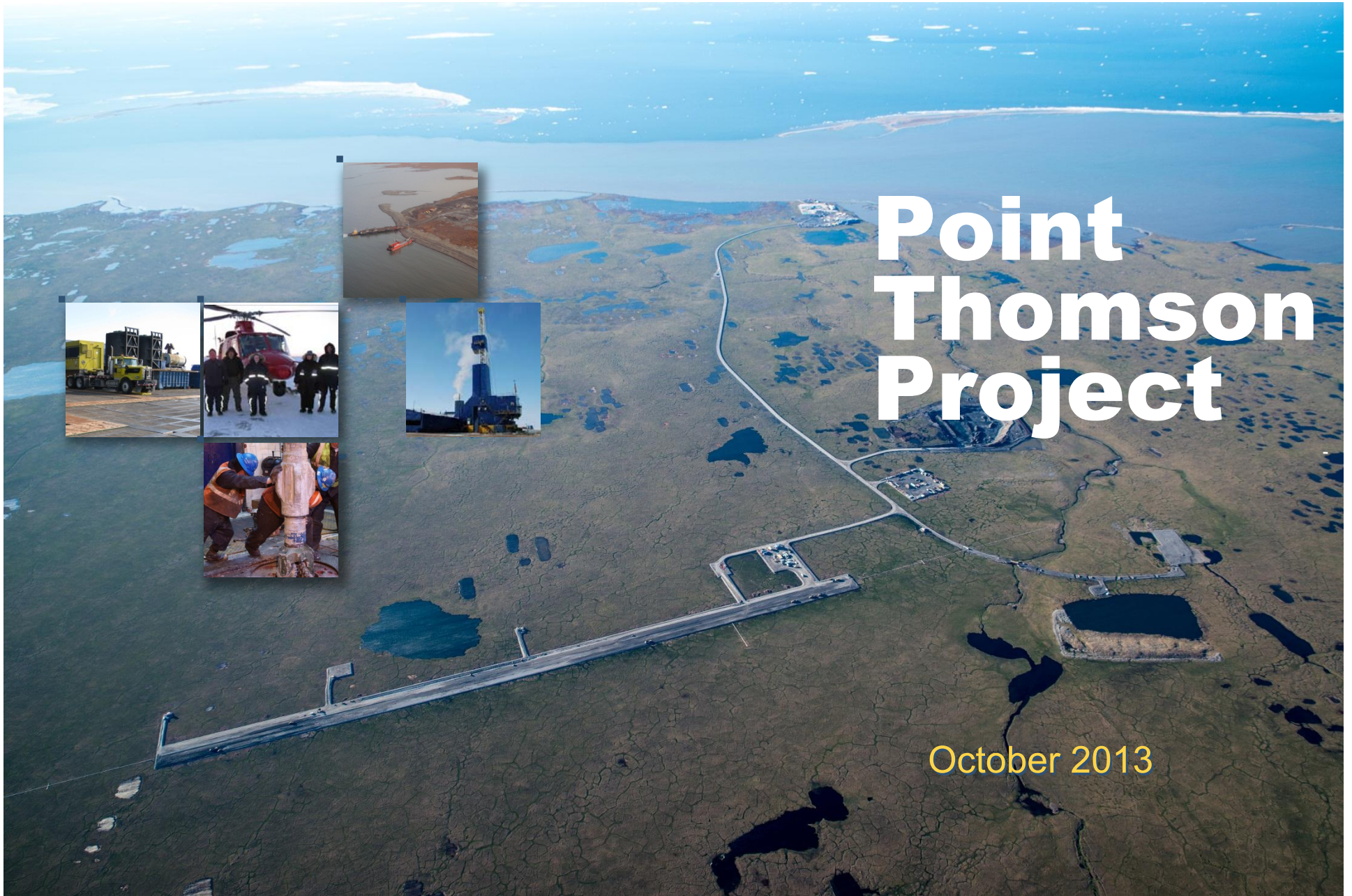


Point Thomson Project

October 2013



About Point Thomson – Overview

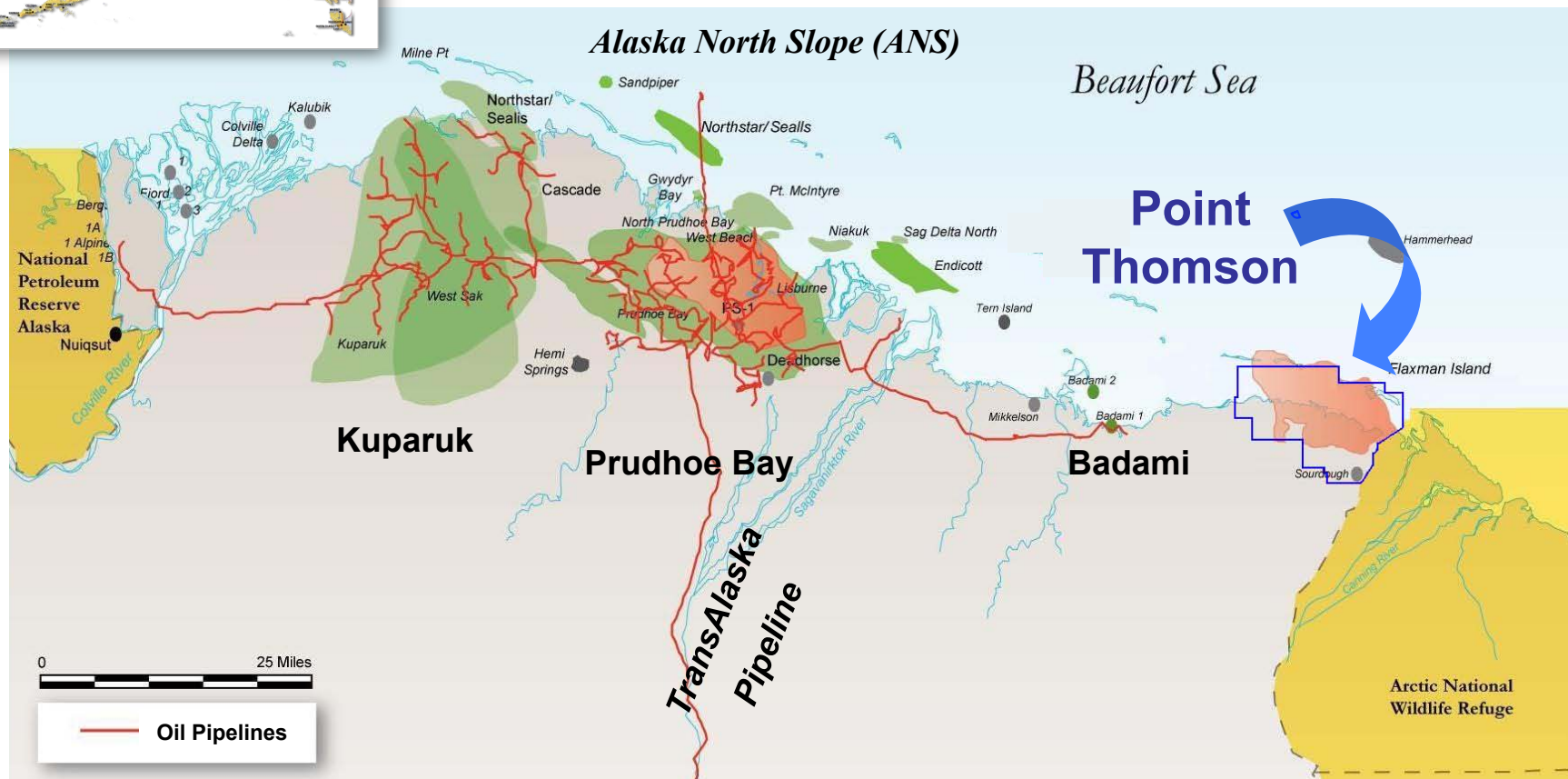


We're excited that Point Thomson will contribute to:

- Opening new portions of the North Slope
- Establishing infrastructure for potential future development
- Investing in Alaska's human resources
- Taking a strategic next step towards North Slope gas development

Point Thomson Unit – Background

- Discovered in 1977
- 60 miles east of Prudhoe Bay and TransAlaska Pipeline
- Point Thomson Unit covers ~150 square miles
- Located in remote and environmentally sensitive area
- Thomson Sand reservoir contains an estimated 8 trillion cubic feet (TCF) of gas and 200 million barrels of condensate (about 25% of known North Slope gas resource)



About Point Thomson - Initial Production Facility

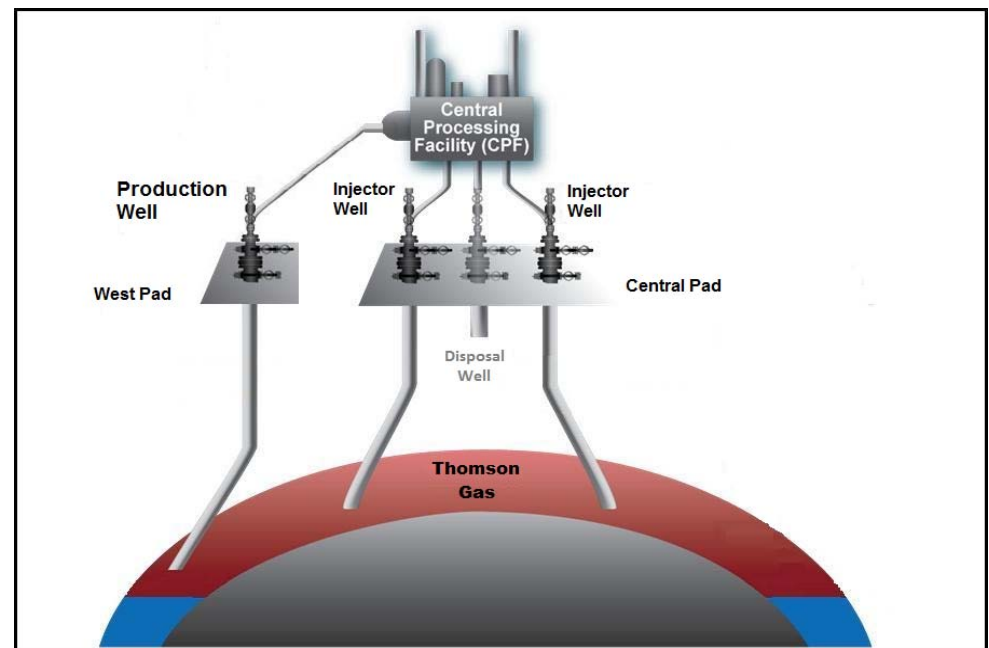


Scope

- Produce up to 10,000 BPD of condensate into TransAlaska Pipeline System
- Support pipeline extension, with a capacity of 70,000 BPD
- Establish critical infrastructure (roads, gravel pads, pier, camp, airstrip, gas processing plant)

Process

- Capacity to cycle 200 million cubic feet of natural gas per day
- One production well and two injection wells
- Directional drilling minimizes environmental footprint



Infrastructure Investment



Infrastructure Investment

Winter / Summer 2013

- Gravel mine opened / gravel placement
- Pipeline infrastructure in place with 2,200 vertical support members (VSM) installed
- Permanent service pier in place
- Diesel tanks installed
- Camp completed in August
- Airstrip to be commissioned in October



Infrastructure Investment

Winter 2013/14 – Summer 2014

- Install gathering and export pipelines
- Complete bridges and gravel pads
- Build west pad

Winter 2014/15 – Summer 2016

- Install production modules
- Mobilize drilling rig to central and west pad
- Point Thomson facilities and pipeline operational
- First production into TAPS!



By the Numbers

- 600+ people working on site this summer
- Over 1,000 Alaskans employed in total during the summer work season

Commitment to Local Hiring

- Over 85% local hiring
- 65 Alaskan companies
- All contractors are expected to comply with ExxonMobil's local hiring standards



Point Thomson Project Contractors



Naniq Logistics
 Tikigaq
 Ukpeagvik (UIC)
 Totem Ocean Express
 Big Horn Trucking
 Port of Anchorage
 CIRI / Cruz Marine AK
 AK Railroad Co.
 Sourdough Express
 Crowley - Bowhead
 AK Airlines
 Bowhead Transportation
 Everts Air Cargo
 Samson Tug & Barge
 Peak Oilfield Services
 Northstar Terminal & Stevedore Co.
 Lynden Transport / LAC
 Horizon Lines
 Legacy

Ryan Air
 Carlile
 Umiag
 NAC
 NMS

Valmont
 ASRC

ATS
 Universal Welding
 Flowline Alaska

Dryden & Lerule
 SSD
 Tyco

ERM
 ABR
 SLR
 LGL



CH2MHILL



WorleyParsons **FLUOR**

ExxonMobil



Kumin
 RSA
 Morris Engineering Group



Crowley Petroleum Dist.
 Lynden

CB&I
 Seven Sisters
 Jesse Engineering

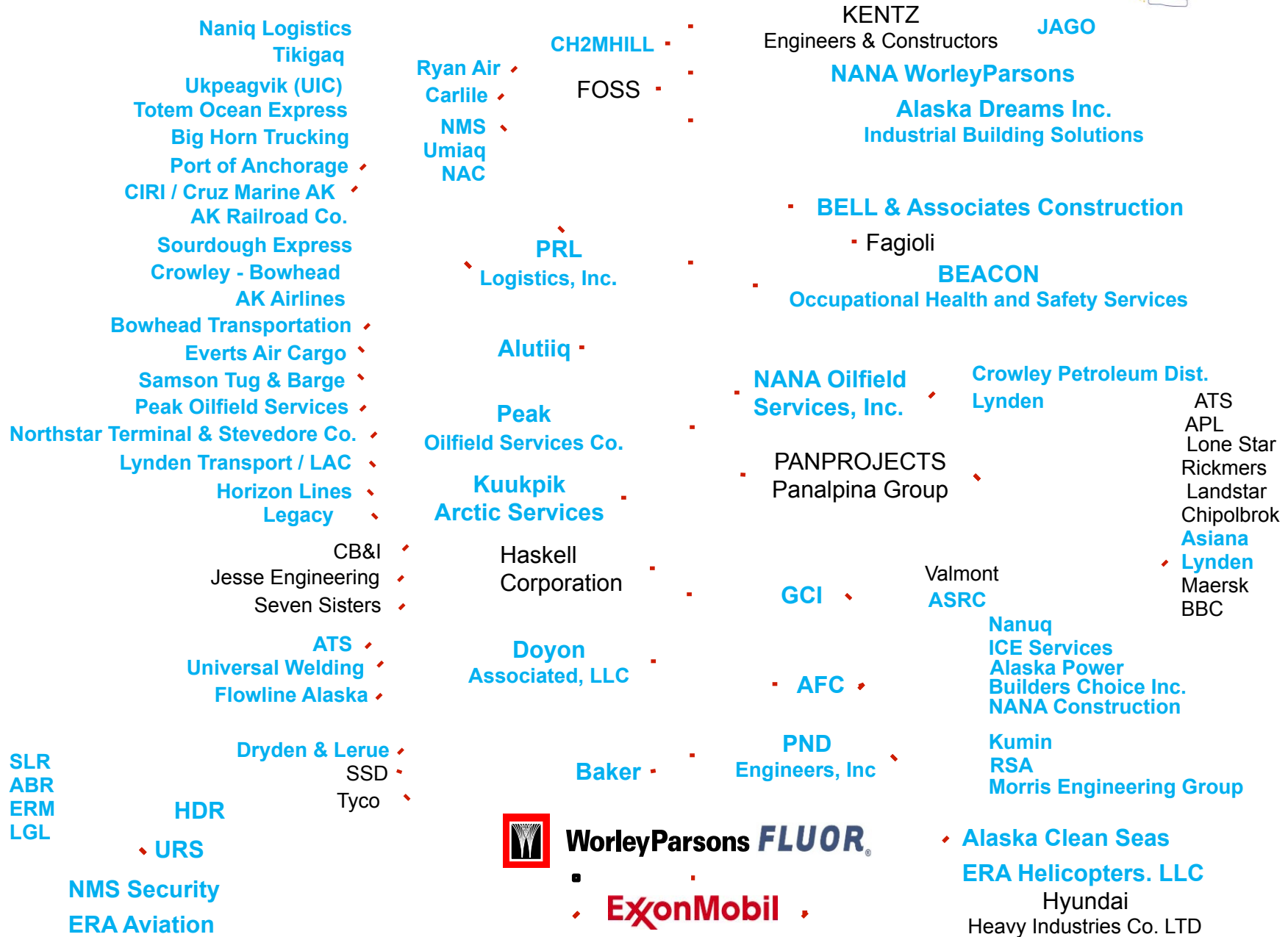
ATS
 APL
 Lone Star
 Rickmers
 Landstar
 Chipolbrok
 Asiana
 Lynden
 Maersk
 BBC

Nanuq
 ICE Services
 Alaska Power
 Builders Choice Inc.
 NANA Construction



ExxonMobil
Development

Alaska Project Contractors



Class of 2013

- First class of 11 operators already in training
- Dedicated individuals from across Alaska, including Anchorage, Barrow, Nikiski, and Anchorage
- Hiring process for next class begins this month



Objective

- Tap full value of North Slope gas by establishing the infrastructure needed to serve both domestic and global markets

Project Impact

- Estimated Total Cost: \$45 – \$65+ Billion
- Peak Construction Workforce: 9,000 – 15,000 jobs
- Operations Workforce: ~1000 jobs in Alaska

Alaska LNG: Project Concept Description



Liquefaction Plant

- Capacity: 15 – 18 million tonnes per annum (MTA)
3 trains (5-6 MTA / train)
- Potential areas: 22 sites assessed in Cook Inlet, Prince William Sound and other Southcentral sites
- Footprint: 400 - 500 acres
- Peak Workforce: 3,500 - 5,000 people
- Required Steel: 100,000-150,000 tons



Producing Fields

- ~35 TCF discovered North Slope resource
- Additional exploration potential
- Anchored by Prudhoe Bay and Pt. Thomson with ~20 years supply available
- Use of existing and new North Slope facilities
- Confirmed range of gas blends from PBU/PTU can generate marketable LNG product
- Peak Workforce: 500 – 1,500 people



Storage / Loading

- LNG Storage Tanks, Terminal
- Dock; 1 - 2 Jetties
- Design based on 15– 20 tankers
- Peak Workforce: 1,000-1,500 people



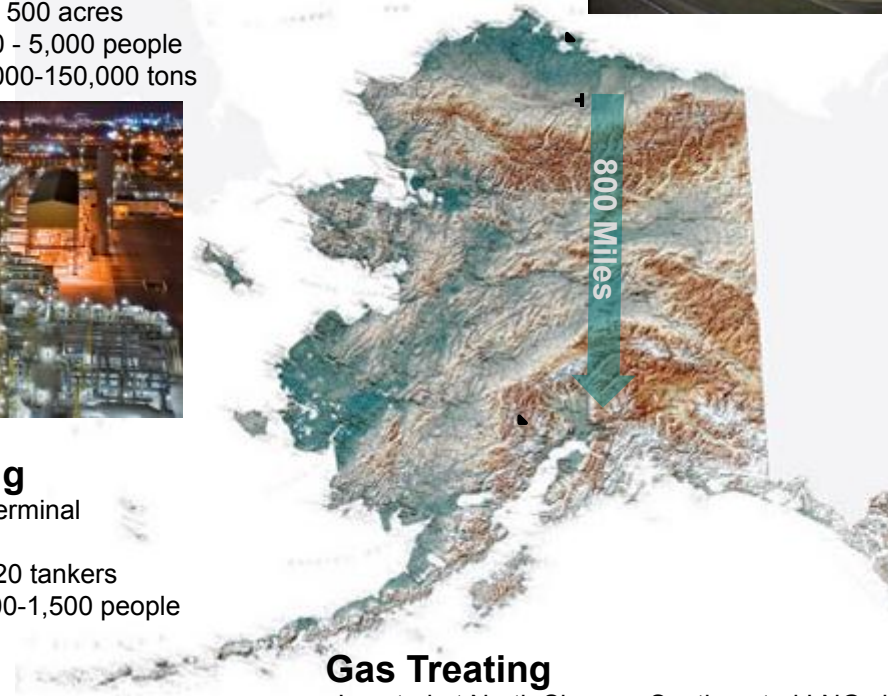
Gas Treating

- Located at North Slope or Southcentral LNG site
- Remove CO₂ and other gases and dispose / use
- Footprint: 150 - 250 acres
- Peak Workforce: 500 - 2,000 people
- Required Steel: 250,000 - 300,000 tons
- Among largest in world



Pipeline

- Large diameter: 42" - 48" operating at >2,000 psi
- Capacity: 3 - 3.5 billion cubic feet per day
- Length: ~800 miles (similar to TAPS)
- Peak Workforce: 3,500 - 5,000 people
- Required Steel: 600,000 - 1,200,000 tons
- State off-take: ~5 points, 300-350 million cubic feet per day, based on demand



In Conclusion

- Point Thomson is a pioneering endeavor. It opens:
 - a new era for ExxonMobil Alaska;
 - a new region of the North Slope;
 - new resource, revenue, and employment opportunities for Alaska.
- With our partners, this work is laying the foundation for future gas development on the North Slope.
- Alaska has the opportunity to become a global gas leader. We're excited to be contributing to the next chapter in Alaska's energy legacy.

