

NANA

Developing Our Future



Resource Development

Imagining the future

“Imagination is more important than knowledge”

- Albert Einstein



Imagination

- 1. The action or facility of forming mental images or concepts of what is not actually present to the senses.*
- 2. Creative talent or ability.*
- 3. The product of imaging; a conception or mental creation.*
- 4. Ability to face and resolve difficulties; resourcefulness*







NANA

Arctic Slope

Doyon

Bering Straits

Calista

CIRI

AHTNA

BBNC

Chugach

Aleut

Koniag

Sealaska

Our corporate **history** made **history**



NANA

REGIONAL CORPORATION, INC.



Red Dog Mine

Arctic Slope

Kivalina

Noatak

Noatak River

Doyon

Kiana

Ambler

Kotzebue

Kobuk River

Kobuk

Noorvik

Shungnak

Selawik

Selawik River

Deering

Buckland

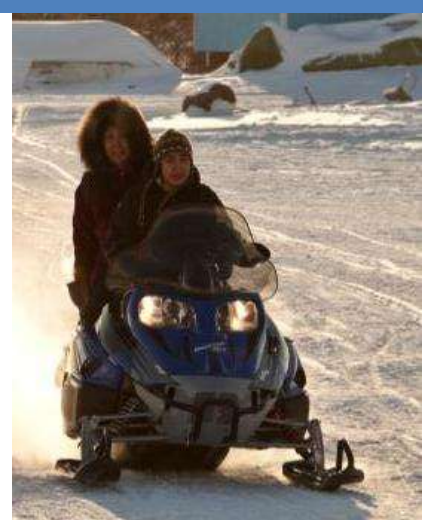
Buckland River

NANA Region

Bering Straits Native Corporation



NANA | OVERVIEW



NANA | OVERVIEW



**NANA currently has more than
12,700 shareholders**

**NANA responsibly develops our
surface and subsurface resources
for the benefit our shareholders**



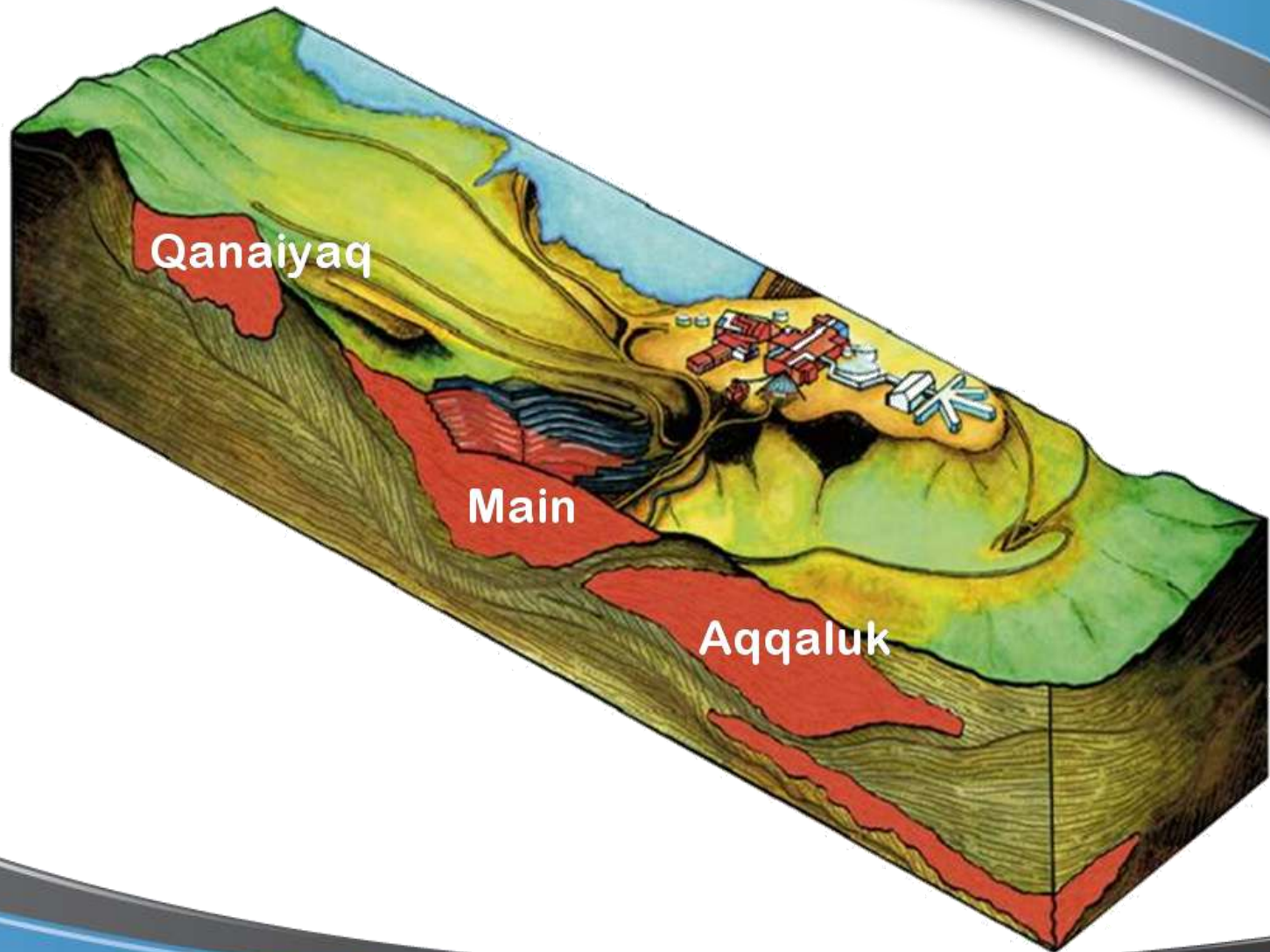
Subsistence is the highest and best use of our lands. All projects must be in concert with this perspective.



**Responsible Development at Red Dog Mine has
helped improve the lives of our shareholders and
build the economy of our region**



NANA | AQQALUK DEPOSIT



NANA | AQQALUK DEPOSIT

Mining the next 20 years...



NANA | AQQALUK DEPOSIT



Aqqaluk Deposit Sept. 2011



NANA

REGIONAL CORPORATION, INC.

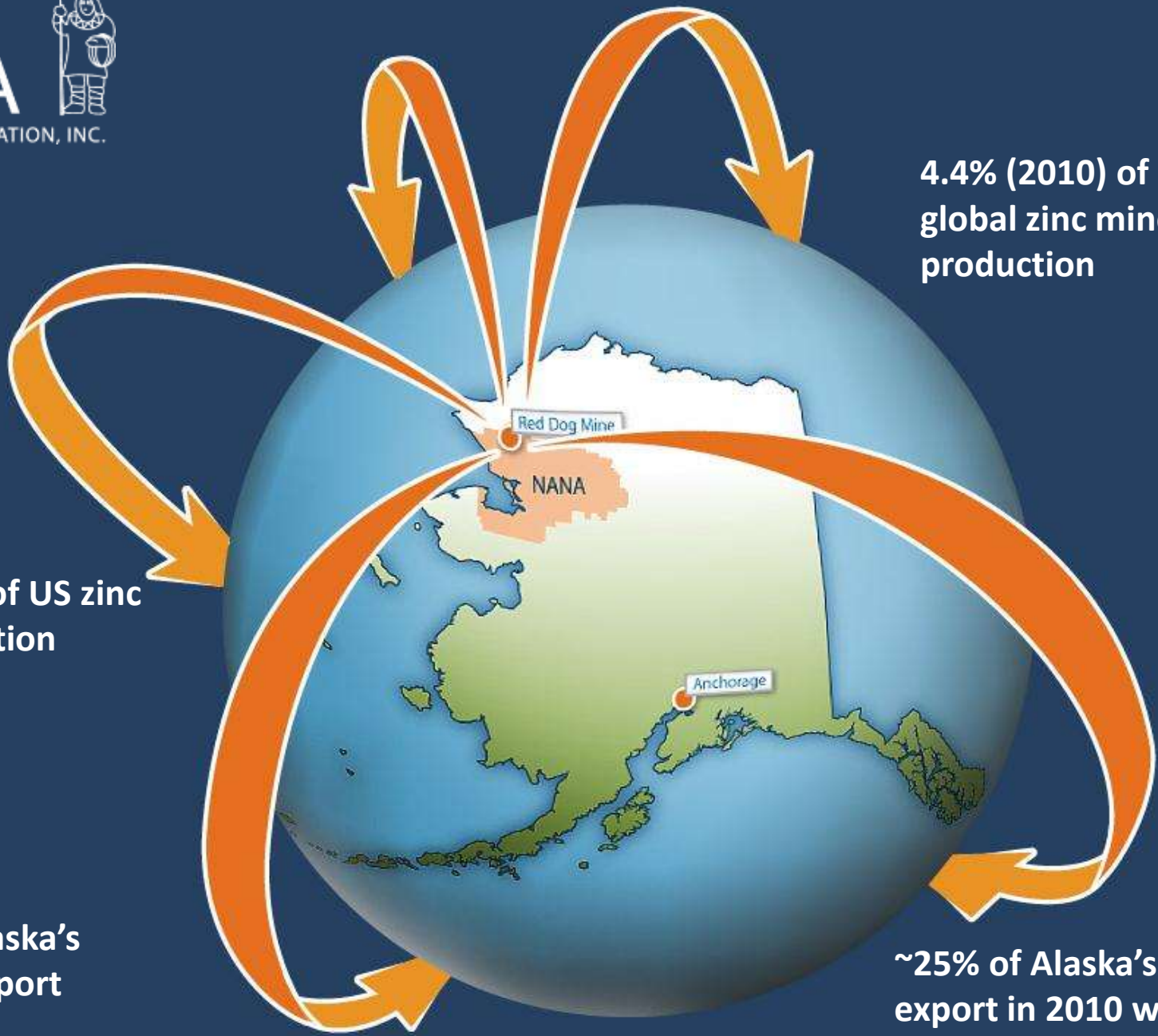


73 % (2010) of US zinc mine production

82 % of Alaska's mineral export

4.4% (2010) of global zinc mine production

~25% of Alaska's export in 2010 was due to Red Dog



Zinc - LME monthly cash prices

US¢/lb

250¢
200¢
150¢
100¢
50¢
0¢

80 82 84 86 88 90 92 94 96 98 00 02 04 06 08 10

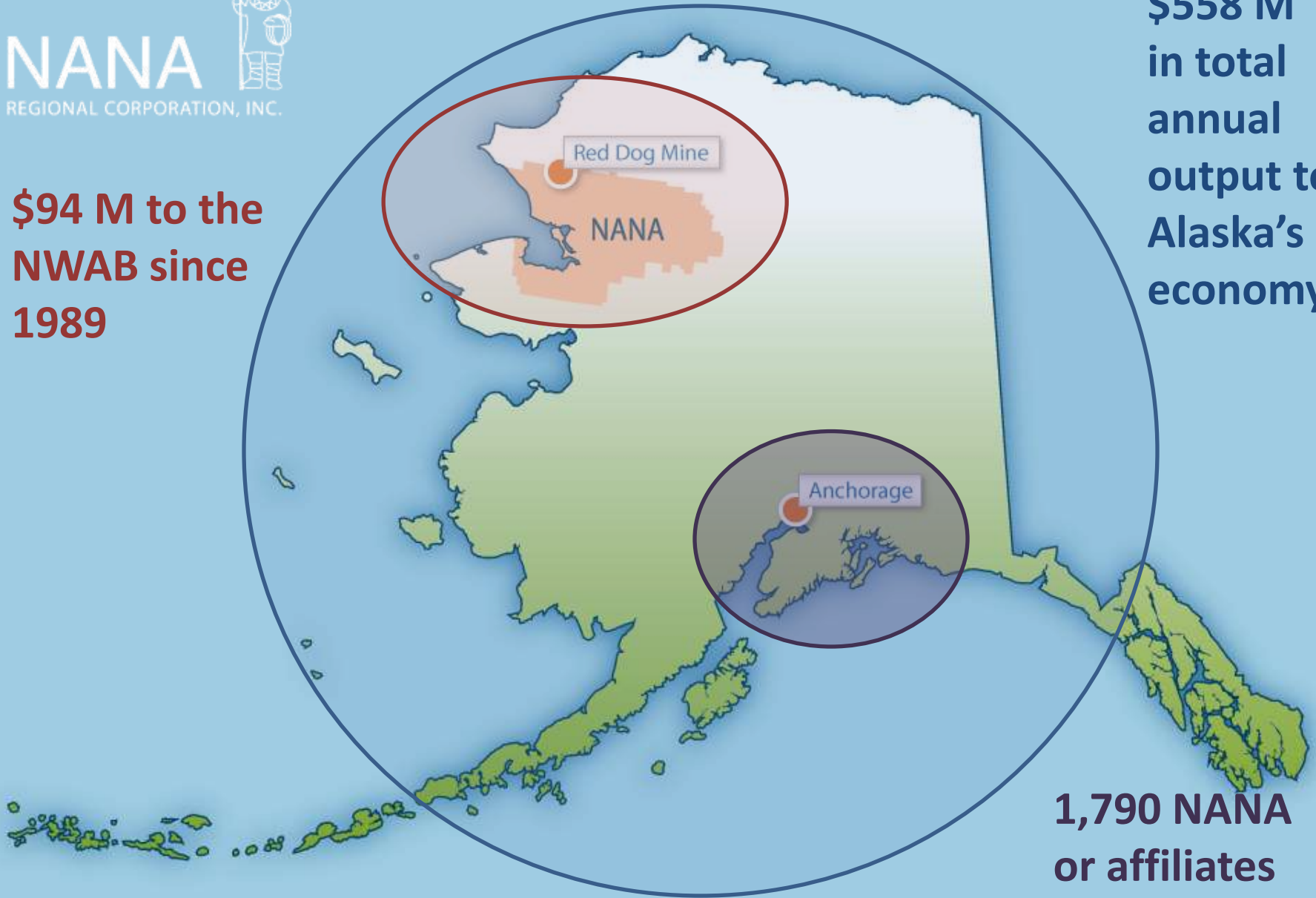


NANA

REGIONAL CORPORATION, INC.



**\$94 M to the
NWAB since
1989**



**\$558 M
in total
annual
output to
Alaska's
economy**

**1,790 NANA
or affiliates
Anchorage
jobs**

Calista Corporation

Doyon, Limited

Sealaska Corporation

Koniag, Inc.

**\$341M shared through
7(i)**

CIRI

Ahtna, Inc.

**since mining began
through FY '10**

Aleut Corporation

Chugach Alaska
Corporation

Bristol Bay Native
Corporation

Bering Straits Native
Corporation

Arctic Slope Regional
Corporation

Support for Future Development

Shareholder Survey

78%
Support



19%
Oppose

2%
Unsure

Mineral Development Timelines

From “discovery” or “re-discovery” to production is 13-20+ years

- Greens Creek: **10 years** ('79-'89), 320 jobs
- AJ Deposit (1880): **14 years** ('84-'97), \$140M, Dormant
- Kensington (1900): **22 years** ('88-'10), >\$240M, Production!
- Pogo: **14 years** ('94-'06), 190 jobs
- Ft. Knox: **13 years** ('84-'96), 380 jobs
- Donlin Gold: **23 years** ('88-'11), >\$220M, 120 jobs, Expl/Dev
- Red Dog: **21 years** ('68-'89), 475 jobs
- Rock Creek (1902): **26 years** ('84-'10), >\$200M, ~40 jobs now





Coal

- Uneconomic due to low quality and relatively low volumes.

Gas & oil funding

- Significant under explored basin.
- Target well is on-shore in the Kotzebue Basin.

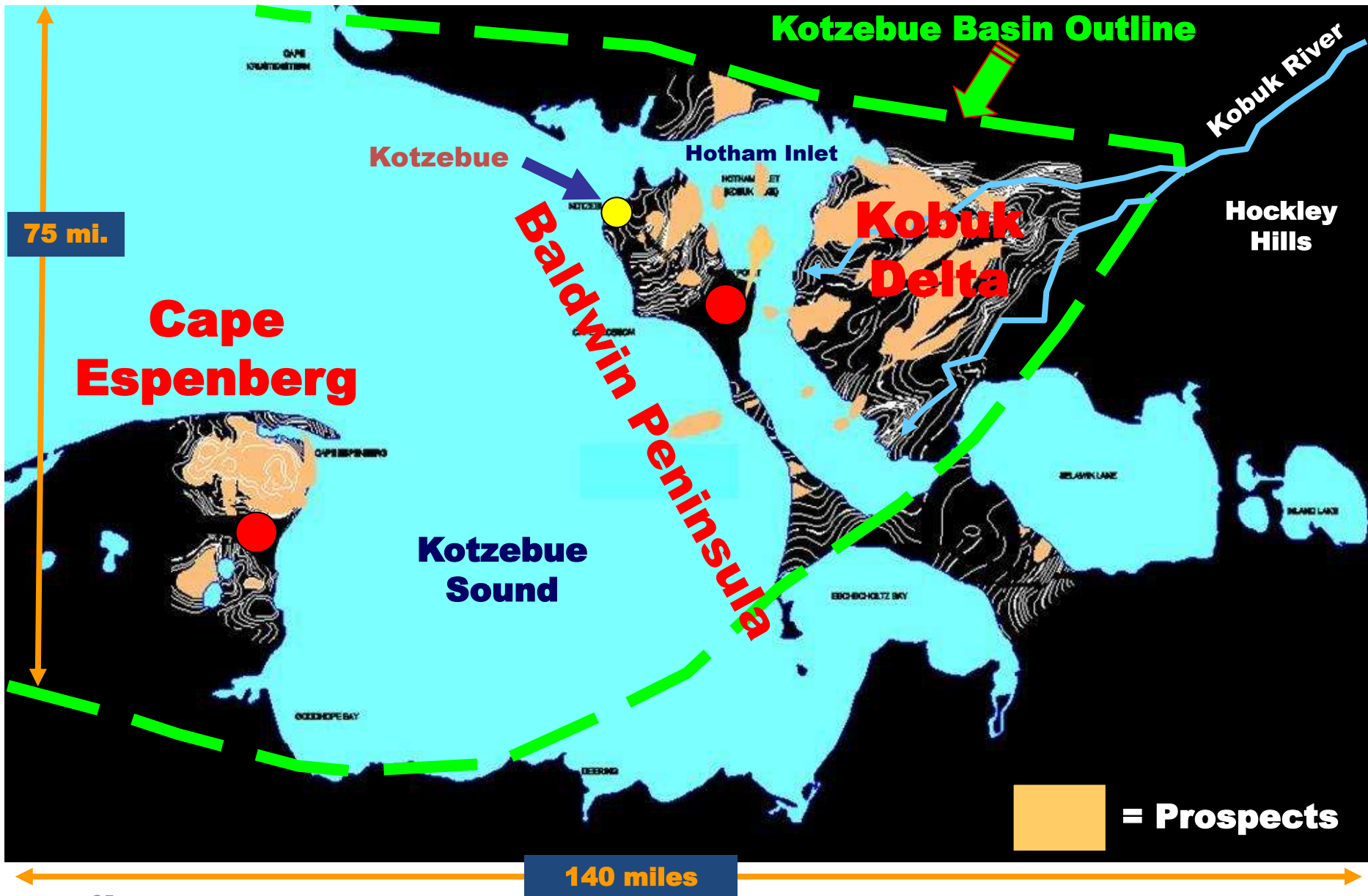
Kotzebue Basin Location



- Basin 350 x 80 miles
- Onshore NW AK and offshore Chukchi Sea
- Separated from Hope Basin by Kotzebue Arch
- Depocenters ~ 20,000 ft Tertiary & probably Cretaceous

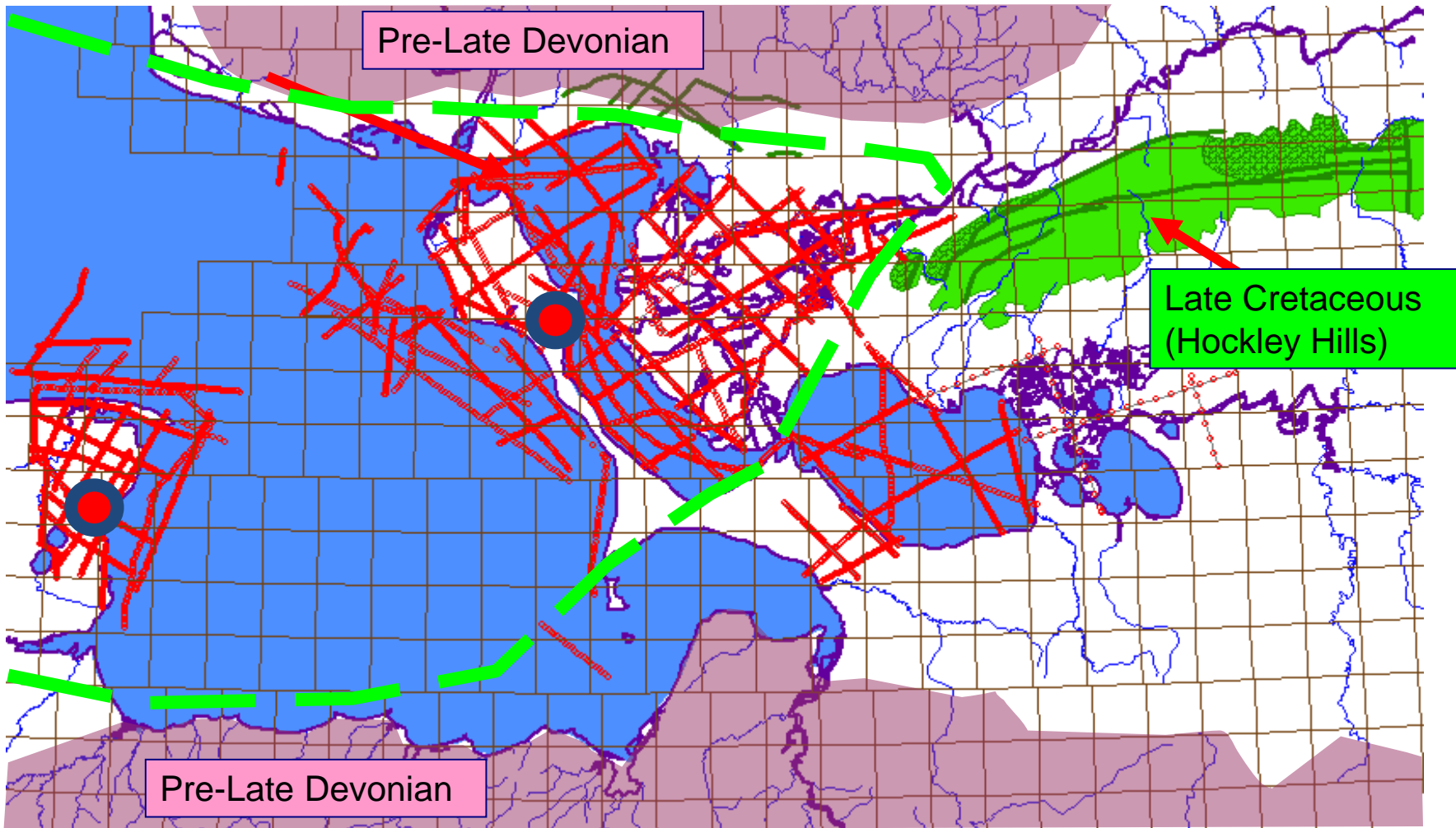


Local Geography



Exploration History and Data

- SOCAL (now Chevron): frontier exploration - early to mid 1970s
- 1500 miles 2D seismic, gravity and aeromagnetic data
- Outcrop and subsurface studies and two stratigraphic test wells 1974



NRC Exploration

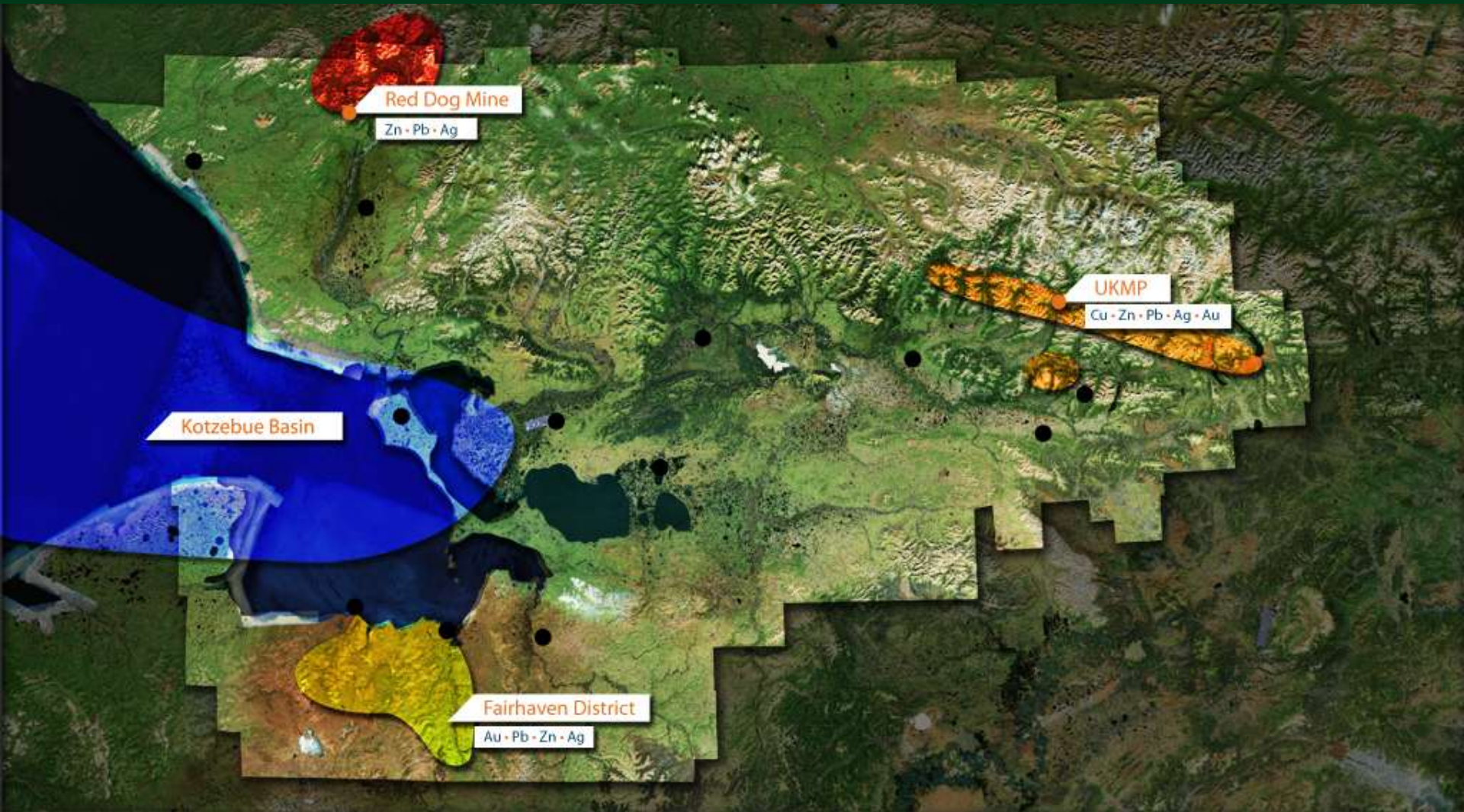
- Evaluate NANA and adjacent lands
- Deering – Candle
- Assist local prospectors



Fairhaven Mining District

- NRC Geological work conducted in 2010 and 2011 for gold and base metals
 - 750 samples soils, rock and water samples collected in 2011
 - Favorable targets defined in mid- summer 2011
- State mining claims staked in Sept. 2011





**NANA actively provides oversight
on all development projects to
ensure the protection of
subsistence resources.**



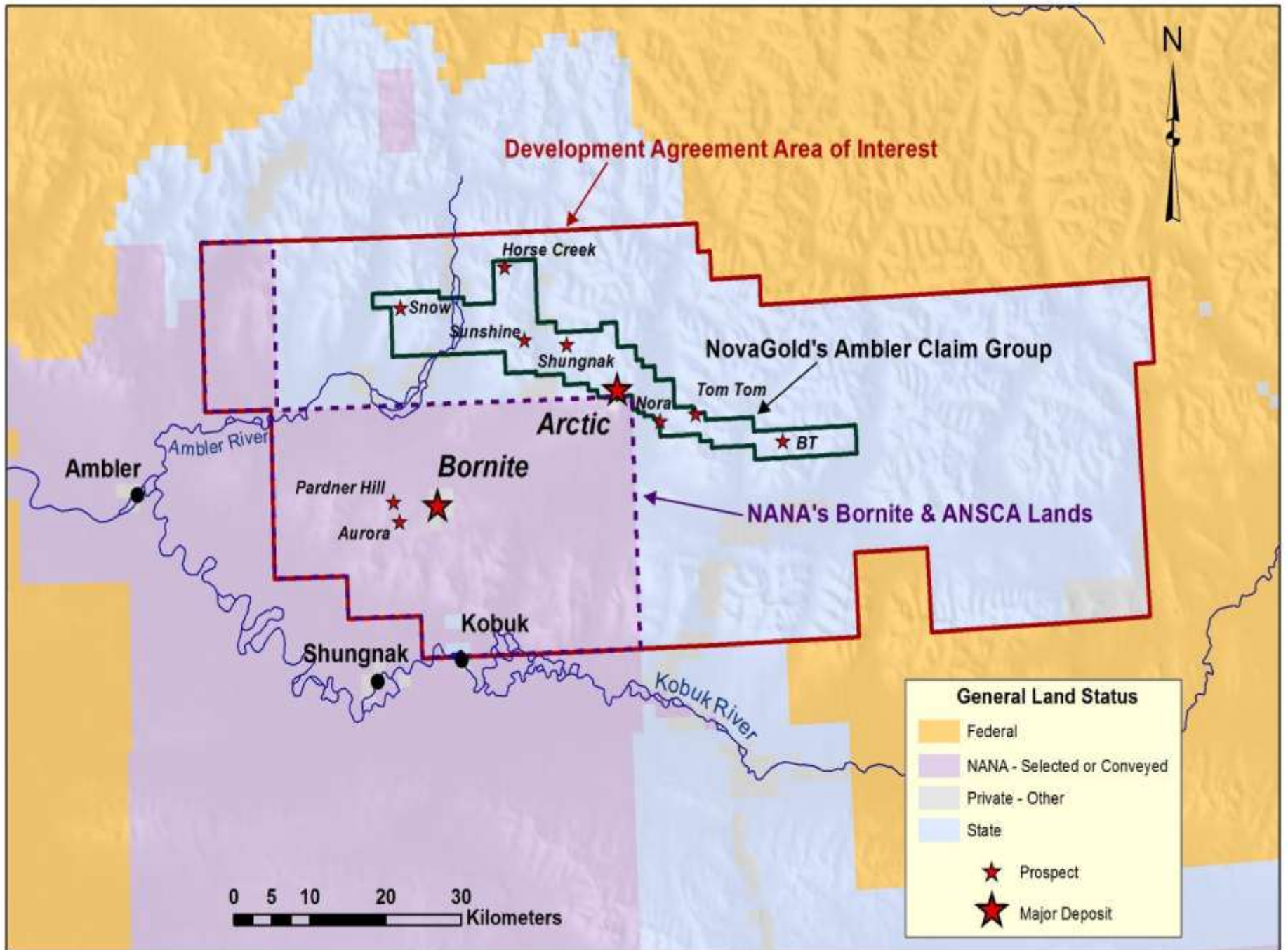
Upper Kobuk Minerals Project



What is the Upper Kobuk Mineral Project?

An advanced stage mineral exploration project in the Ambler VMS district where known deposits of copper, zinc, lead, silver and gold exist.





NANA/NovaGold venture

- Summer 2011 new camp
- ~ 40 camp employees
- 50 % NANA shareholder hire
- Core drilling at Arctic and Bornite Deposits



Project History

**Bornite mineralization discovered.
Interest in uranium in 40s**

Shaft sunk at Bornite in 1963-67

Arctic Deposit discovered in 1965 by Kennecott

Mapping and diamond drilling carried out between 1967 and 1998 by Kennecott

NovaGold entered into JV agreement with RTZ in 2004 to advance the project

NovaGold has carried out additional exploration (drilling, mapping, geophysics) on the property. Acquired remaining interest from Kennecott in 2011.

NANA

REGIONAL CORPORATION, INC.



Bornite Circa 1967-68

Bornite - August 2011



NANA | VILLAGE ECONOMIC DEVELOPMENT



NANA | VILLAGE ECONOMIC DEVELOPMENT



Sustainability Projects



To ensure the sustainability of our region's villages, and to mitigate the continuing energy crisis, NANA is working with our regional, state and federal partners to create alternative, affordable sources of energy and create important infrastructure in our villages in the hopes of spurring economic growth.

Current Projects

- Hydroelectric study
 - Cosmos Hills
- Wind
 - Deering,
Buckland and
Noorvik
- Woody Biomass

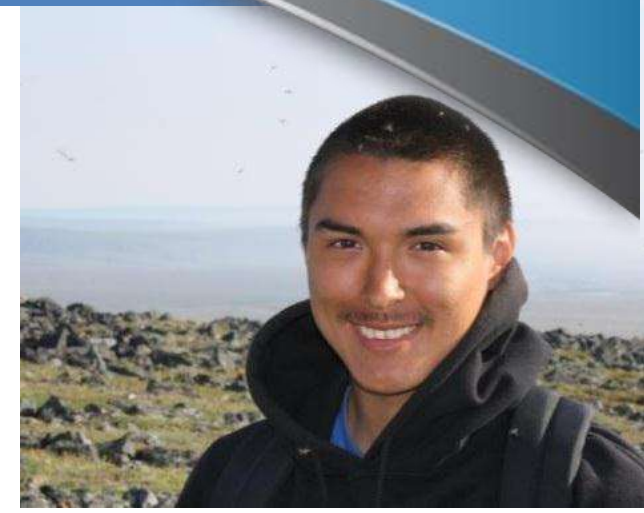


EnergyWise

- NANA contributed \$860,000
- 6 villages
- Administered by RurAL CAP
- 110 local jobs



NANA | PROFESSIONAL DEVELOPMENT



Imagining the Future

- Create a basis of wealth for future shareholders
- Must begin to prepare for tomorrow today
- There are opportunities in the professions



NANA

REGIONAL CORPORATION, INC.



TAIKUU

naturalresources@nana.com

