

RESOURCE DEVELOPMENT COUNCIL

Growing Alaska Through Responsible Resource Development

BREAKFAST MEETING

Thursday, October 15, 2009

- 1) Call to order – Wendy Lindscoog, President
- 2) Self Introductions
- 3) Headtable Introductions
- 4) Staff Report: Jason Brune, Executive Director
- 5) Program and Keynote Speaker:

Red Dog: The Next 20 Years

Jim Kulas, Manager, Environmental & Public
Affairs, Teck Alaska and Rosie Barr, Resources
Manager, NANA Regional Corporation

Next Meeting: November 5: Native 8(a) Contracting: Providing Value to
America, Opportunity for Alaska, Barney Uhart, Chugach Alaska Corporation

Please add my name to RDC's mailing list

NAME/TITLE: _____

COMPANY: _____

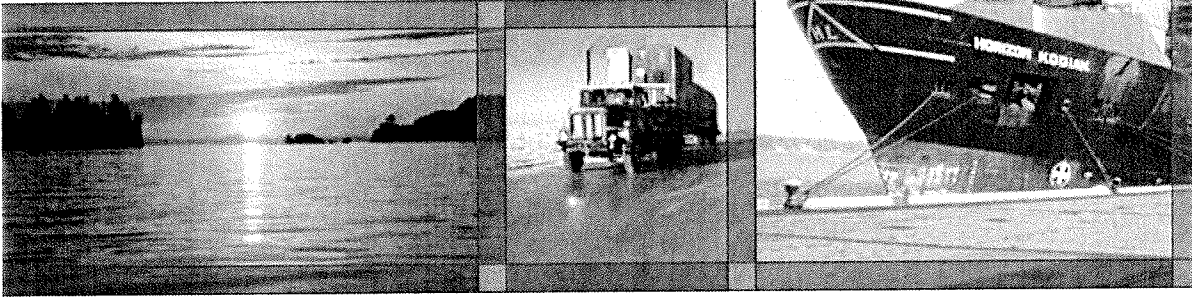
ADDRESS: _____

CITY: _____ STATE: _____ ZIP: _____

PHONE/FAX/EMAIL: _____

RESOURCE DEVELOPMENT COUNCIL

Growing Alaska Through Responsible Resource Development



RDC APOC Complaint

October 12, 2009 - [RRC, AFCW, Dubke, Hackney, Jameson and Gillam Consent Decree \(pdf\)](#)

September 3, 2009 - [AJS Consent Decree \(pdf\)](#)

June 5, 2009 - [APOC Staff Report \(pdf\)](#)

October 13, 2009 - There will be an APOC hearing Thursday, October 15 at 9 am regarding the proposed APOC consent decree for campaign violations committed by the Renewable Resources Coalition, Alaskans for Clean Water, Robert Gillam, Michael Dubke, Arthur Hackney, and Richard Jameson with an agreement to pay "costs to the State of Alaska in the amount of \$35,000." This proposed consent decree also states "no further proceedings against Respondents will be brought by the State of Alaska with regard to these matters."

APOC staff in June suggested that the Commission consider referring this case to the Attorney General under 2 AAC 50.476(b)(2) to investigate whether violations of AS 15.56 have occurred. The staff report also recommended the maximum civil penalty for these violations, which by rough calculations could reach over \$300,000, though APOC will not disclose what this exact amount is.

As one of the parties that brought this complaint, RDC will be expressing its serious concerns with this consent decree on Thursday.

For additional background, we encourage you to read Andrew Halcro's piece on this issue, published today at:

http://www.andrewhalcro.com/the_apoc_see_no_evil_0

March 20, 2009 - RDC and the Pebble Limited Partnership filed an Alaska Public Offices Commission (APOC) complaint against some of the proponents of Ballot Measure 4, the so called "Clean Water" ballot initiative which failed by an overwhelming margin last August.

The complaint was filed against the Renewable Resources Coalition, Alaskans for Clean Water, Americans for Job Security, and Robert Gillam for violation of Alaska's campaign disclosure laws.

RDC would like to emphasize that we are not opposed to organizations taking a position on initiatives and working to convince voters about their position - they have every right to do so. However, as Alaskans, we feel all groups working to influence voters on these initiatives must register with APOC and meet the requirements of Alaska law, especially when it comes to disclosing financial resources.

The complaint speaks for itself and it is now in the hands of APOC to research and sort out.

[APOC Complaint Forms and Summary](#)

BACKGROUND AQQALUK



A SUSTAINABLE FUTURE FOR ALASKA

Mining within the Main Deposit of Red Dog Operation's ore body will end between 2010 and 2012. But plans are underway to extend the mine's life and fulfill the potential of one of the world's largest zinc deposits and the benefits it can deliver to Alaskans and Alaska's Native people.

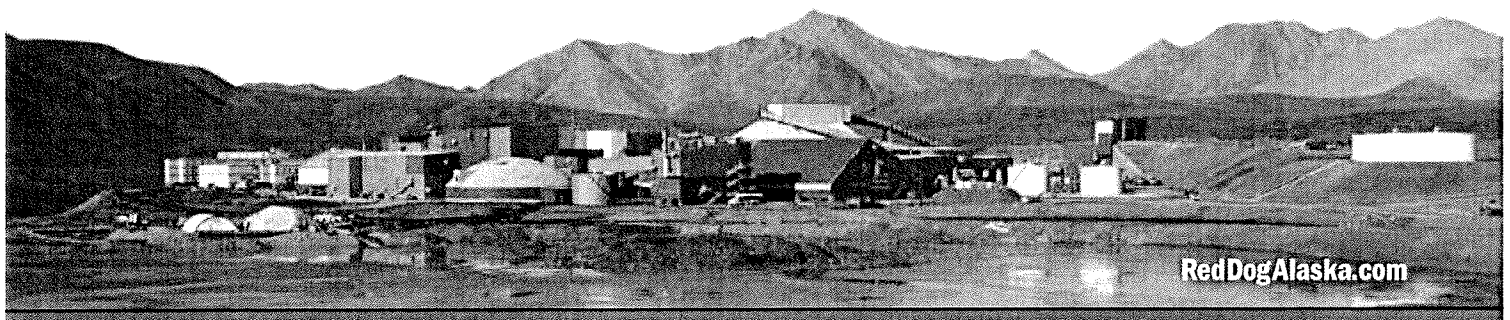
AQQALUK DEPOSIT

Since 1989, Red Dog has mined zinc and lead in Northwest Alaska on land owned by NANA Regional Corporation while employing over 50 percent NANA shareholders. The existing "Main Pit" at Red Dog will run out of ore in 2011. In order to continue operations until 2031, Red Dog needs to mine the Aqqaluk Deposit, which contains 51.6 million tons of reserves containing 16.7 percent zinc and 4.4 percent lead. Mining of the Aqqaluk Deposit needs to begin in 2010 to keep the mine operating. Under the current Teck Alaska Incorporated and Nana Regional Corporation proposal, the Aqqaluk Deposit would be mined and the ore processed using the same methods that are employed at the Main Deposit. Aqqaluk is immediately adjacent to the Main Pit and represents an estimated 20 years of additional mining for Teck, NANA, the region, and Alaska.

NEPA PROCESS FOR FEDERAL PERMITS

The EPA is currently in the process of renewing the mine's water discharge permit (NPDES). In addition, the Army Corps of Engineers (COE) will ultimately issue the wetland permits for the Aqqaluk Deposit. Both federal actions must be reviewed under the National Environmental Policy Act (NEPA).

NEPA requires federal agencies to analyze the environmental impacts of their decisions. Red Dog has requested a renewal of its NPDES permit and will be asking for the issuance of the wetlands permit for the Aqqaluk Deposit. These are both "federal actions" for which EPA is completing a Supplemental Environmental Impact Statement (SEIS) that considers the environmental impacts of the proposed action as well as those of reasonable alternatives. To determine what alternatives should be reviewed in the SEIS, EPA held scoping meetings in October 2007. Based on the comments received during scoping and cooperating agency input, EPA developed three alternatives and then analyzed the environmental impacts of Red Dog's proposed action along with the three alternatives.



BACKGROUND AQQALUK



On December 5, 2008, the EPA released the Draft SEIS for public review and comment. In their Draft SEIS, EPA determined that Red Dog's proposed project is the Preferred Alternative. The Plan will allow for the timely development of Aqqaluk and another 20 years of mining at Red Dog. The draft SEIS also found that Red Dog Creek downstream from the mine will remain healthy and productive.

Agencies involved in the SEIS process include: the Environmental Protection Agency; U.S. Army Corps of Engineers, the National Park Service, the State of Alaska, the Northwest Arctic Borough and, as represented by the Maniilaq Association, nine tribal governments (Kobuk, Buckland, Kiana, Kivalina, Kotzebue, Noatak, Noorvik, Selawik and Shungnak).

After EPA public hearings in Kivalina, Noatak, Kotzebue and Anchorage, the public comment period closed on February 3, 2009. The EPA is now reviewing the comments and will issue a Final SEIS in the third quarter, 2009, with final agency permitting decisions to follow shortly thereafter. Further information on the SEIS process and public SEIS documents are available online at <http://www.reddogseis.com/>.

STATE PERMITS AND RECLAMATION PLAN APPROVAL

Teck currently has provided financial assurance with the State of Alaska in the amount of \$154 million to ensure eventual reclamation and closure of the Red Dog mine. Teck has now applied for additional State of Alaska permits required for ongoing operations, as well as development of the Aqqaluk deposit. The State solid waste permit governs management of mine water, tailings, waste rock stockpiles and other solid wastes at Red Dog. Teck has also completed a multi-year process of incorporating company, agency and stakeholder input into an updated reclamation and closure plan. This updated plan will be evaluated in the SEIS and assessed with respect to environmental protection, including subsistence resources and water quality. Once approved, it is anticipated that the financial assurance provided by Teck to ensure implementation of the plan will be approximately \$300 million.

On June 11, 2009, the State of Alaska announced the beginning of a 60-day public comment period on the draft Reclamation Plan Approval and Solid Waste permit. Public meetings are scheduled for Kivalina, Noatak, and Kotzebue July 6-8. Further information is available online at <http://www.dnr.alaska.gov/mlw/mining/largemine/reddog/publicnotice>.

PATH FORWARD

Red Dog is seeking both the State and federal permits by the first quarter of 2010 in order to maintain steady production to the mill. To ensure that this important economic engine of Northwest Alaska can continue to operate without interruption, it is critical that the agencies review and address the public comments in a thorough and timely manner and issue final decisions and permits expeditiously.

BACKGROUND WATER QUALITY



Since mining began at Red Dog in 1989, water management and treatment has improved downstream water quality over natural conditions.

- “Under all alternatives, metals levels in Red Dog Creek would be consistently lower than pre-mining conditions.” (*December, 2008, Environmental Protection Agency, Red Dog SEIS*)
- “Ten years of aquatic surveys have demonstrated that aquatic productivity in the main stem has increased from pre-mining conditions due to effective water management practices and treatment.” (*March 2006 Alaska Department of Environmental Conservation*)
http://www.dec.state.ak.us/water/wqsar/wqs/pdfs/epa_case_study_reddog.pdf
- “Since 1998 – a decade after the mine started operating – spawning has occurred in Middle Fork Red Dog Creek. As a result of improved water quality, Arctic grayling, a freshwater fish, use creek habitat for spawning where fish mortality use to occur. Dolly Varden trout also use the creek for rearing.” (*Reference – Dr. Phyllis Weber Scannell, Comparison of Mainstem Red Dog Creek Pre- and Post-Mining, ADNR, March 11, 2005, http://www.dnr.state.ak.us/habitat/reddog.htm*).
- Post-mining concentrations of cadmium, lead, and zinc in the water of the mainstem of Red Dog Creek are lower than pre-mining conditions. (EPA Red Dog Environmental Assessment, January 2006)
[http://yosemite.epa.gov/r10/water.nsf/NPDES+Permits/CurrentAK822/\\$FILE/AK-003865-2%20EA.pdf](http://yosemite.epa.gov/r10/water.nsf/NPDES+Permits/CurrentAK822/$FILE/AK-003865-2%20EA.pdf)

Red Dog Mine protects the quality of Kivalina’s drinking water, keeping it safe and healthy

- Red Dog Mine is located 66 miles upstream from the village of Kivalina in the Northwest Arctic Borough of Alaska. Treated discharge water from Red Dog Mine flows into tributaries of the Wulik River, which is the source of drinking water for Kivalina.
- “TDS and metal concentrations in the Wulik River, including the Kivalina drinking water intake, would be expected to remain at current levels and not be impacted by mine discharges”. (*December, 2008, Environmental Protection Agency, Red Dog SEIS*)
- The Alaska Division of Public Health reviewed ecological and human health information related to Kivalina and issued two reports stating that subsistence foods and water are safe for consumption. (*Reference – Alaska Division of Public Health, Public Health Evaluation of Exposure of Kivalina and Noatak Residents to Heavy Metals from Red Dog Mine, October 25, 2001 and Dr. James Middaugh et.al. , Alaska Division of Public Health, Public Health Evaluation and Assessment Biomonitoring of Residents of Kivalina and Noatak Lead and Cadmium Results, January 7, 2005*)

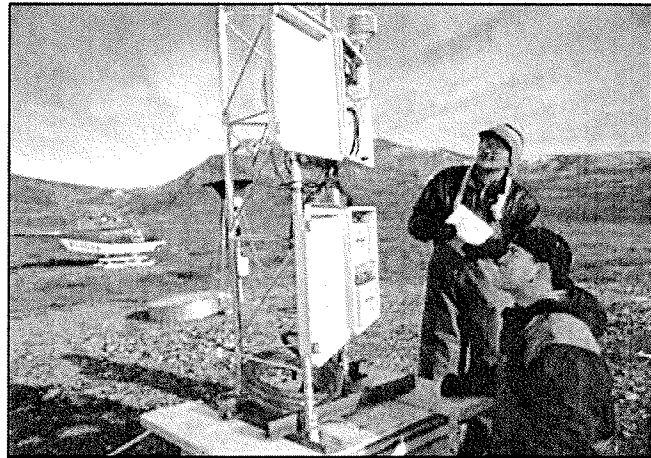


BACKGROUND WATER QUALITY



Red Dog Mine is committed to achieving the highest environmental standards and complying with all environmental laws and regulations.

- Our environmental technicians regularly test the region's air, water, soil and wildlife. Each year, more than 31,000 environmental tests take place. This includes water sampling and testing of the air as well as testing the fish, caribou population, marine mammals and vegetation, such as plants and berries. Annually we collect more than 2,300 water samples from streams below the mine and from ocean at the port.



We consult with local communities on water quality and environmental issues.

- An independent Subsistence Committee, consisting of elder hunters from Noatak and Kivalina, meets regularly with mine representatives to review all subsistence and environmental issues - including water quality - and provide guidance to the mine to ensure environmental performance.
- Red Dog Mine continues to communicate openly about permit-related issues. We work with our neighbors, meet periodically with local stakeholders for their input, as well as provide monthly environmental reports to the villages of Kivalina and Noatak.

Red Dog Mine treats all water before discharge.

- Red Dog Mine operates an extensive water collection and containment system and a state-of-the-art water treatment system. The mine operates under some of the most stringent permit limits in the nation. Dissolved metals are removed until extremely low limits are reached - these limits are even lower than those set for drinking water.
- Red Dog collects all rainfall, snowmelt and groundwater from the mine site in mine's tailings impoundment and must annually discharge a sufficient volume of treated water to safely manage the water level of the impoundment to ensure metals from the ore do not impact the environment.
- After the treated water is tested to ensure that it meets discharge standards, it is released to Middle Fork Red Dog Creek where it moderates the pH level and lessens the toxicity of the metal bearing, naturally occurring water (Reference - Dr. Phyllis Weber Scannell, Comparison of Mainstem Red Dog Creek Pre- and Post-Mining, ADNR, March 11, 2005)
- More than \$1.1 million is spent annually to ensure the safety of the drinking water and the health of the aquatic community.

BACKGROUND WATER QUALITY



Red Dog Mine is committed to the continuous improvement of our environmental performance.

- In 2004, Red Dog Mine joined an elite group of U.S. metal mines and received ISO 14001:2004 certification. This means our mine has an independently and annually certified environmental management system to support environmental protection, prevention of pollution and continued improvement in environmental performance.
- Since 2000, we have invested \$68 million to improve and enhance the environmental performance at Red Dog Mine. This involved conducting over 300 studies to help us do our job even better and fulfill our commitment to local communities and the environment.

Summary of the characteristics of the aquatic communities and water quality between pre-mining and current conditions. Mainstem Red Dog Creek.

	Pre-mining (1982 - 1983)	Current Conditions (1999 - 2003)
Water Quality	High metals. Most water samples (>90%) exceed 5 times the acute standard for Cd and Zn.	Somewhat elevated metals. No samples exceeded 5 times acute standard for Cd and Zn.
Fish Populations	Few fish. Migration only.	Arctic grayling spawning and rearing. Dolly varden rearing.
Invertebrate Communities	No or few invertebrates observed.	Abundant community with high taxonomic richness.
Periphyton Communities	No periphyton observed.	Abundant community. Richness represented by all three major pigments.

For more information, contact:

Jim Kulas, Manager, Environmental and Public Affairs, Red Dog Mine, (907) 426-9129

BACKGROUND FACT SHEET



BUSINESS

In operation since 1989, Red Dog Mine is a zinc-lead mine and is the world's largest producer of zinc concentrate.

LOCATION

Red Dog Mine is located in Northwest Alaska in the DeLong Mountains of the Brooks Range, 82 miles north of Kotzebue, 55 miles from the Chukchi Sea and 106 miles above the Arctic Circle. It is situated within the Northwest Arctic Borough. The mine is self-reliant, with power generation, an airport, worker housing and ocean shipping facilities.

OPERATING AGREEMENT

The mine was developed under an innovative operating agreement between the NANA Regional Corporation (NANA), a Native corporation owned by the Iñupiat people of Northwest Alaska, and Teck Alaska Incorporated, a U.S. subsidiary of Teck Resources Limited, a diversified mining and metals company and significant producer of copper, gold and specialty metals, headquartered in Vancouver, Canada.

OPERATIONS

Red Dog Mine is an open-pit, truck-and-loader operation, using conventional drill and blast mining methods. The mineral processing facilities use conventional grinding and sulfide flotation methods to produce zinc and lead concentrates. Product from the mine is shipped to Teck Resources' metallurgical facilities in British Columbia, Canada and to customers in Asia and Europe. Due to arctic conditions, the concentrate is stored at the port facility in Alaska's largest buildings and is shipped to customers during a 100-day season that occurs from July to October each year.

EMPLOYEES

Red Dog Mine provides 483 full-time, family-supporting jobs, and creates close to 59 temporary jobs annually. The 2008 payroll was \$52 million. Further, the mine continues to successfully develop and integrate a local workforce - NANA shareholders make up nearly 58 percent of the mine's employees.



Red Dog poised to dig for another two decades

NEW PIT: EPA set to issue water-discharge permit, a key to keeping mine open.

By ELIZABETH BLUEMINK

ebluemink@adn.com

(10/13/09 22:08:29)

Federal environmental regulators have signaled they will issue a permit to the state's largest mine, the Red Dog zinc and lead mine, one needed to keep it operating for another 20 years.

The stakes couldn't be higher for Red Dog's owners. The mine's open pit has been mined for 20 years -- transforming the regional economy in the process -- but it is nearly played out. The pit is on track to run out of ore in 2011.

Closure of Red Dog would ripple throughout the region, and even the state: It would trigger the loss of hundreds of jobs in a region with few private employers, of tax revenue that supports village schools and of millions of dollars in royalties circulated annually to Native corporations around the state.

To keep the mine alive, Teck Resources, the mine's operator, wants to dig a new pit next to the current one. That proposal to regulators touched off a two-year federal study of the mine's environmental impacts over the past 20 years and what those impacts could be if the new pit were built.

A few days ago, the federal Environmental Protection Agency published its study, after wading through hundreds of pages of public comments on a draft version of the document, filed by mine employees, village leaders, environmentalists and many others. EPA now says it plans to issue a new water-pollution-discharge permit to Red Dog -- one of the most critical of several state and federal actions needed to allow the mine to start its second open pit and stay open. Because of a change in state rules, that permit will be more lenient than the current discharge permit.

The EPA is holding a 30-day period for people to weigh in before it issues the permit. The comment period ends Nov. 9.

Jim Kulas, Red Dog environmental manager, said the company hopes to obtain all the necessary permits by the end of the year so it can start preparing the new site for mining at the beginning of next year.

Environmental groups said this week they are still reviewing the EPA study and don't know yet if they'll challenge the agency's permit. Once the permit is issued, they'd have a 30-day deadline to file suit against it.

YEARS OF DEBATE

By issuing the new water-pollution permit, the EPA would replace an older permit that has been the source of much controversy and lawsuits against the mine.

Ever since it opened in 1989, Red Dog has chronically violated some of the water-quality standards in that permit.

Teck has sought to get those permit conditions eased, arguing to regulators that they were too strict. The company pointed out that the number of fish were increasing downstream from the mine, because the mine's treatment process had removed naturally occurring pollutants. But some residents of Kivalina, a nearby village, say their water supply has been harmed. The permit allowed the mine to discharge its wastewater in Red Dog Creek, a tributary of the Wulik River, the source of Kivalina's drinking water. Some village residents aren't convinced by Teck's routine monitoring results that haven't shown harmful amounts of pollutants from the mine in their water supply.

Red Dog's pollution discharges disrupted the peace of mind in Kivalina, said Enoch Adams, a village leader

and one of several who sued the mine over its water-quality violations in Red Dog Creek.

A NEW DEAL

Teck has worked out a legal settlement with Adams and others who had sued over Red Dog's permit violations. Within 30 days of the EPA's new water-pollution permit being finalized -- and clear of potential lawsuits -- Red Dog has agreed to apply for a new permit to route its wastewater to the ocean through a proposed multimillion-dollar pipeline, addressing the village's pollution concerns.

"That is going to be a great day for us," said Adams.

For now, Red Dog plans to use the new EPA permit to continue discharging its wastewater into Red Dog Creek.

EPA regulators have said the mine's chronic water violations should end because Red Dog will be able to meet the less-stringent standards of the new permit. Federal and state regulators say the new standards -- codified in state law several years ago -- will not harm aquatic life.

Several environmental groups have written comment letters to the EPA, arguing that it's illegal for the agency to loosen the water-quality requirements in Red Dog's permit.

It looks like the EPA and state regulators conspired to "create the weakest permit possible" to keep Teck happy, according to one comment from the Center on Race, Poverty & the Environment, a California-based environmental law firm that represented Adams and other Kivalina residents in their now-settled suit against the mine.

Teck will have to apply for a slew of new permits to discharge its waste into the ocean. Until a pipeline is built, the company has agreed to pay for water filtration in Kivalina households.

Find Elizabeth Bluemink online at adn.com/contact/ebluemink or call 257-4317.

Print Page

Close Window

[Federal Register: October 9, 2009 (Volume 74, Number 195)]
[Notices]
[Page 52231-52232]
From the Federal Register Online via GPO Access [wais.access.gpo.gov]
[DOCID:fr09oc09-60]

ENVIRONMENTAL PROTECTION AGENCY

[ER-FRL-8598-1]

Environmental Impacts Statements; Notice of Availability

Responsible Agency: Office of Federal Activities, General Information
(202) 564-1399 or <http://www.epa.gov/compliance/nepa/>.

Weekly Receipt of Environmental Impact Statements Filed 09/28/2009
through 10/02/2009 Pursuant to 40 CFR 1506.9

EIS No. 20090348, Final EIS, EPA, AK, Red Dog Mine Extension--Aqqaluk
Project, Reissuance Permit Applications for National Pollutant
Discharge Elimination System (NPDES) Permit and New Information,
Chukchi Sea, AK, Wait Period Ends: 11/09/2009, Contact: Patricia
McGrath 206-553-0979.

RDC's 30th Annual Conference

Alaska Resources 2010

Wednesday and Thursday, November 18-19, 2009
Dena'ina Convention Center
Anchorage, Alaska

Despite the global recession, Alaska's future remains bright with exciting opportunities across the state's resource development sectors. Ongoing development and production in Alaska's resource industries continue to move forward, providing jobs, income and revenues, all signs of relative economic strength compared to the rest of the nation.

RDC's 30th Annual Conference, Alaska Resources 2010, will provide timely updates on new projects and prospects, address critical issues and challenges, and consider the implications of new federal policies on Alaska's oil and gas, mining and other resource development sectors. The conference will also feature the latest forecasts and updates on Alaska's basic industries, as well as how companies are navigating the current economic environment.

More than 700 people are expected to attend Alaska's most established and highest profile resource development forum of the year, including decision-makers across all resource industries, support sectors, and Native corporations,

as well as state legislators, federal, state and local government officials, not to mention educators and students.

RDC would be honored to have your company sponsor Alaska Resources 2010. Conference sponsors and attendees will be treated to a diverse and knowledgeable slate of speakers, networking opportunities, as well as gourmet breaks, lunches and a VIP reception.

Your sponsorship dollars stay right here in Alaska, where RDC puts them to work for its members to influence and shape state and federal public policy, encourage investment in Alaska and grow the economy through responsible resource development.

Please join us at the Dena'ina Convention Center in Anchorage on November 18 and 19, 2009.

Thank you for your support and participation!



Event Sponsorship & Exhibit Opportunities:

Gain recognition and exposure to all RDC members by becoming a conference sponsor! Sponsors are recognized in the conference brochure, on the RDC website, in event notices, the official program, PowerPoint screens at the event and ads in local business publications. Please return the pledge form before October 5th to be listed in the conference brochure. Thank you for your support!

Platinum Sponsor \$5,000

Eight registrations to the conference, sponsor recognition in all conference communications and the *Resource Review* newsletter, 1/2 page advertisement in the conference program, and listing of your company logo in PowerPoint. (Camera ready artwork due: Friday, October 30. Ads are 5" h x 7.25" w. Please send ad and logo electronically to RDC at resources@akrdc.org)

Cosponsor \$3,000

Six registrations to the conference, sponsor recognition in all conference communications and the *Resource Review* newsletter, 1/4 page advertisement in the conference program and listing of your company logo in PowerPoint. (Camera ready artwork due: Friday, October 30. Ads are 5" h x 3.5" w. Please send ad and logo electronically to RDC at resources@akrdc.org)

General Sponsor \$2,000

Four registrations to the conference, sponsor recognition in all conference communications and the *Resource Review* newsletter, and listing of your company logo in PowerPoint. (Please send logo electronically to RDC at resources@akrdc.org by October 30.)

Underwriter \$1,000

Two registrations to the conference, sponsor recognition in all conference communications and the *Resource Review* newsletter, and listing of your company logo in PowerPoint. (Please send logo electronically to RDC at resources@akrdc.org by October 30.)

Exhibit Showcase at the spacious Dena'ina Center! \$1,000

Exhibit booth at the conference, sponsor recognition in conference communications, and one registration to the conference.

Please return the following pledge form - by Monday, October 5th to be listed in the conference brochure!

Specialty Sponsorship Opportunities

Sponsors are recognized on PowerPoint screens, the official conference brochure and program.

Wednesday or Thursday's Eye-Opener Breakfast (7:00 - 8:00 am) \$4,000 each

Every registrant's first stop! A warm buffet with a wide variety of breakfast fare. **SOLD OUT**

Wednesday or Thursday Morning Breaks \$3,000 each SOLD OUT!

The conference stops for these popular breaks. Advertise your company with our specially-designed breaks!

Wednesday Afternoon Break \$3,000 SOLD OUT!

Network at an old-fashioned ice cream social event with other special treats.

Thursday Send-Off Toast \$5,000

Champagne and sparkling cider, as well as other beverages and chocolate-covered strawberries provide an elegant conclusion to Alaska's premier conference on resource development.

Centerpiece Sponsor \$4,000 SOLD OUT!

Personalized arrangements at each table with your company logo.

VIP Reception Sponsor SOLD OUT!

Wrap up the opening day of the conference with a networking reception open to all conference attendees featuring cocktails and gourmet appetizers.

Wednesday or Thursday's Espresso Coffee Stand Sponsor \$2,500 each

A big hit among conference attendees who so much appreciate that gourmet latte, mocha and specialty teas. Your company logo on every cup. **SOLD OUT!**

RDC Grand Raffle

Donate a prize of your choice for the popular drawing held at the close of the RDC Conference. Donors are recognized in the conference program.

Please fill out the following information and email to resources@akrdc.org or fax the form to (907) 276-3887. Questions? Call (907) 276-0700. RDC will send an invoice or gladly accept credit card payments.

Sponsorship Level: Platinum Cosponsor General Underwriter Exhibitor

Specialty Sponsorship Choice(s): _____

RDC Raffle Prize: _____

Company: _____

Conference Contact: _____

Address: _____

City/State/ZIP: _____

Phone: _____ E-mail: _____

Thank you for your support and participation! Your generous sponsorship sustains RDC and its work on issues important to you and your business.

Corporate Sponsors

Platinum Sponsors

BP Exploration (Alaska) Inc.
ConocoPhillips Alaska, Inc.
ExxonMobil
Northrim Bank
Teck Alaska/NANA
Development Corporation

VIP Reception Host

Government of Canada

Centerpiece Sponsor

Peak Oilfield Service Company

Gourmet Break Sponsors

ExxonMobil
Petrotechnical Resources of Alaska
Stoel Rives, LLP

Portfolio Sponsor

ExxonMobil

Breakfast Sponsors

ConocoPhillips Alaska, Inc.
Solstice Advertising

Espresso Stand Sponsors

Carlisle Transportation Systems
LRS Corporation

Cosponsors

AIC
Alaska Frontier Constructors
Alyeska Pipeline Service Company
Arctic Slope Regional Corporation
CH2M HILL
Cook Inlet Region Inc.
Denali: The Alaska Gas Pipeline
Eni Petroleum
LRS Corporation
Pebble Limited Partnership
Pioneer Natural Resources
Shell Exploration Alaska
The Alaska Pipeline Project, A Joint
Project of TransCanada & ExxonMobil
Wells Fargo
Westward Seafoods
XTO Energy

General Sponsors

ACS
Alaska Airlines
Alaska Business Monthly
Alaska Cruise Association
Alaska Laborers
Alaska National Insurance Co.
AT&T
Barrick Gold Corporation
Chevron
Cruz Construction
Dowland Bach
Fairbanks Gold Mining, Inc.
Fluor
Harbor Enterprises, Inc.
Koniag Incorporated

Lynden
Morris Communications
MWH
North Slope Borough
Perkins Coie LLP
Petroleum News
Salt + Light Creative
SRK Consulting
StatoilHydro
Temsco Helicopters
Tesoro Alaska Company
Udelhoven Oilfield System Services
Usibelli Coal Mine, Inc.

Underwriters

AECOM Environment
AIDEA
Alaska Department of Labor & Workforce
Development
Alaska Housing Finance Corporation
Alaska Partnership for Economic Development
Alaska Railroad Corporation
Alaska USA Federal Credit Union
Aleut Corporation
American Marine Corporation
Anadarko Petroleum
Anchorage Sand and Gravel
Anglo American US LLC
ARCADIS-US
Beacon OHSS
Bering Straits Native Corporation
BHP Billiton
Brice Companies
Bristol Bay Native Corporation
Brooks Range Petroleum Corporation
Calista Corporation
Chugach Alaska Corporation
Chugach Electric Association
Chumley's Inc.
City of Unalaska
Coeur Alaska - Kensington Mine
Conam Construction Company
Crowley
Donlin Creek LLC
Doyon Family of Companies
Edison Chouest Offshore
ENSTAR Natural Gas Company
Era Helicopters
ERM
FEX
First National Bank Alaska
Flint Hills Resources
Flowline Alaska
GCI
Global Land Services
Golder Associates, Inc.
Granite Construction Inc.
Halliburton Energy Services
Hartig Rhodes Hoge & Lekisch
Hawk Consultants LLC
HDR Alaska, Inc.
Hecla Greens Creek Mine
Holland America Line
Hotel Captain Cook
IBEW Local 1547
Key Bank
Koncor Forest Products

Marathon Alaska Production LLC
Michael Baker Jr., Inc.
Mikunda Cottrell & Company
Municipal Light & Power
Nabors Alaska Drilling, Inc.
NC Machinery
Northern Air Cargo
NovaGold
Pacific Seafood Processors Association
PacRim Coal, LP
PENCO: Pacific Environmental Corporation
Petro Star Inc.
Port of Anchorage
Port of Tacoma
Price Gregory International
Providence Health Services Alaska
Renaissance Alaska LLC
Samson Tug & Barge
Savant Alaska LLC
Sealaska Corporation
Security Aviation
STEELFAB
Three Parameters Plus
Totem Ocean Trailer Express
UMIAQ
Univar USA Inc.
URS Corporation
Weaver Brothers Inc.
Weston Solutions
WorleyParsons

Exhibitors

ABB, Inc.
AERO-METRIC, Inc.
Alaska Airlines
Alaska Business Monthly
Alaska Dept of Labor & Workforce Development
Alaska Earth Sciences
Alaska Executive Search
Alaska Roteq Corporation
Alutiiq Oilfield Solutions, LLC
AMEREF
APICC
Arctic Power
Campbell Creek Science Center
Canadian Map Systems (Alaska) Inc.
CH2M HILL
Consulate of Canada
Delta Leasing LLC
Denali - The Alaska Gas Pipeline
Dowland Bach Corporation
Everts Air Cargo
First National Bank Alaska
Global Land Services
IBEW Local 1547
Mapmakers Alaska
Morris Communications
MWH
NMS Workforce Solutions
North Star Terminal & Stevedore
Northern Economics, Inc.
TOTE Systems
Pebble Limited Partnership
Petroleum News Alaska
Petroleum Systems Integrity Office
ProComm Alaska
Three Parameters Plus, Inc.
Tutka, LLC
UIC UMIAQ
Weston Solutions Inc.
Worksafe

United Way

FESTIVAL OF WINES



“FIRST FRIDAY”

NOVEMBER 6

7:00-9:30 PM

in the ConocoPhillips Atrium

700 G Street

Doors open at 6:30 PM

Must be 21 or older to attend – all ID's will be checked at the door

- Wine Tasting • Silent Auction
- Live Music • Light Hors d'oeuvres

\$50 General Admission

\$75 Specialty Tasting

*Includes High-End Cabernets and Chardonnays and Hors d'oeuvres compliments of
The Crow's Nest at the Hotel Captain Cook, Kincaid Grill,
Marx Brothers Cafe and Orso Ristorante*

Tickets available at La Bodega in the University Center
or at www.ConocoPhillipsAlaska.com/UWFestivalofWines

All proceeds benefit United Way!

Taxi vouchers available upon request at the event, courtesy of ConocoPhillips.

Special thanks to our “Top Shelf” Sponsors for this event.



**NABORS
ALASKA DRILLING, INC.**

REGISTER NOW!

INTERNATIONAL ARCTIC FISHERIES SYMPOSIUM

**Managing Resources
for a Changing Arctic**

19-21 October 2009

Hotel Captain Cook, Anchorage, Alaska

www.nprb.org/iafs2009/

Purpose

To initiate international discussions for conserving and managing future fisheries in the Arctic Ocean including managing migratory, transboundary and straddling fish stocks. The symposium will identify current management regimes in the Arctic region and how relevant scientific and fisheries data can be used to inform future management decisions. The symposium will identify gaps in existing management regimes and potential steps to address those gaps, as well as the need for improved scientific programs to support conservation and management of future Arctic fisheries.

Participants

More than 200 persons are expected to attend, representing governments, fisheries agencies, and stakeholders.

Current Agenda

www.nprb.org/iafs2009/agenda.html

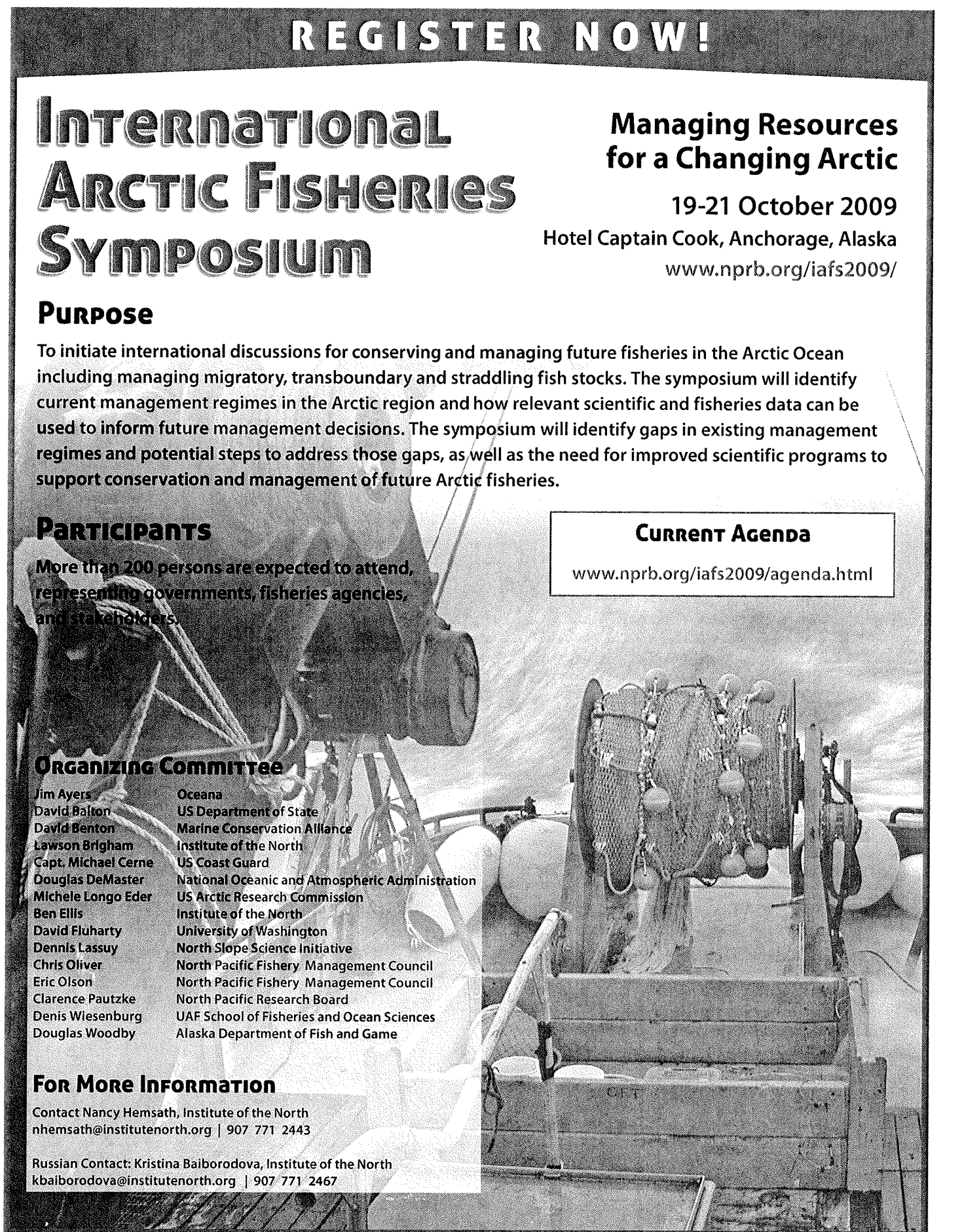
Organizing Committee

Jim Ayers	Oceana
David Balton	US Department of State
David Benton	Marine Conservation Alliance
Lawson Brigham	Institute of the North
Capt. Michael Cerne	US Coast Guard
Douglas DeMaster	National Oceanic and Atmospheric Administration
Michele Longo Eder	US Arctic Research Commission
Ben Ellis	Institute of the North
David Fluharty	University of Washington
Dennis Lassuy	North Slope Science Initiative
Chris Oliver	North Pacific Fishery Management Council
Eric Olson	North Pacific Fishery Management Council
Clarence Pautzke	North Pacific Research Board
Denis Wiesenburg	UAF School of Fisheries and Ocean Sciences
Douglas Woodby	Alaska Department of Fish and Game

For More Information

Contact Nancy Hemsath, Institute of the North
nhemsath@institutenorth.org | 907 771 2443

Russian Contact: Kristina Baiborodova, Institute of the North
kbaiborodova@institutenorth.org | 907 771 2467



SAVE THE DATE

INTERNATIONAL ARCTIC FISHERIES SYMPOSIUM

Managing Resources for a Changing Arctic

19-21 October 2009

Hotel Captain Cook, Anchorage, Alaska

www.nprb.org/iafs2009

PURPOSE

To initiate international discussions for conserving and managing future fisheries in the Arctic Ocean including managing migratory, transboundary and straddling fish stocks. The symposium will identify current management regimes in the Arctic region and how relevant scientific and fisheries data can be used to inform future management decisions. The symposium will identify gaps in existing management regimes and potential steps to address those gaps, as well as the need for improved scientific programs to support conservation and management of future Arctic fisheries.

PARTICIPANTS

More than 200 persons are expected to attend, representing governments, fisheries agencies, and stakeholders.

ORGANIZING COMMITTEE

Jim Ayers	Oceana
David Balton	US Department of State
David Benton	Marine Conservation Alliance
Lawson Brigham	Institute of the North
Capt. Michael Cerne	US Coast Guard
Douglas DeMaster	National Oceanic and Atmospheric Administration
Michele Longo Eder	US Arctic Research Commission
Ben Ellis	Institute of the North
David Fluharty	University of Washington
Dennis Lassuy	North Slope Science Initiative
Chris Oliver	North Pacific Fishery Management Council
Eric Olson	North Pacific Fishery Management Council
Clarence Pautzke	North Pacific Research Board
Denis Wiesenburg	UAF School of Fisheries and Ocean Sciences
Douglas Woodby	Alaska Department of Fish and Game

FOR MORE INFORMATION

Contact Nancy Hemsath, Institute of the North
nhemsath@institutenorth.org | 907 771 2443

PRELIMINARY AGENDA

19 October

0730-0900	Registration
0900-0945	<ul style="list-style-type: none">• Welcome, purpose and scope of conference (co-chairs)• Opening remarks
0945-1015	BREAK – Sponsored coffee break
1015-1230	Overview <ul style="list-style-type: none">• Impacts of climate change on the Arctic Ocean – IPCC expert• Living resources: What lives there now or may live there? – Fisheries scientist• Who uses it? – Panel to include industry and subsistence users
1230-1400	LUNCH
1400-1530	International laws, commissions, management and scientific data <ul style="list-style-type: none">• What we know• Trends and implications
1530-1600	BREAK – Sponsored health break
1600-1730	International laws, commissions, and management (continued)
1730-1745	Closing – preview of Day 2

20 October

0845-0900	Call to session
0900-1130	Use of science and data availability
1130-1300	LUNCH
1300-1500	Panel sessions – Arctic nations <ul style="list-style-type: none">• Gap analysis of National laws and management structures within the Arctic Region
1500-1530	BREAK – Sponsored health break
1530-1730	Facilitated discussion and scenario development: <ul style="list-style-type: none">• What are potential solutions to promote the conservation and management of future Arctic fisheries?• What steps need to be taken between Arctic neighboring states to address issues such as transboundary stocks?• What should the international community do about ensuring healthy fish stocks in the high seas portion of the central Arctic Ocean where there are no current agreements?
1900-2100	Sponsored reception

21 October

0845-0900	Call to session
0900-1100	Small group breakouts to discuss ways forward
1100-1130	BREAK – sponsored coffee break
1130-1230	Report of small group discussions
1230-1400	LUNCH
1400-1500	Facilitated discussion of recommendations and next steps
1500-1530	Closing remarks
1530-1600	BREAK – sponsored coffee break
1600-1700	Committee members meet to plan publication and next steps, if any



121 West Fireweed Lane, Suite 250
Anchorage, Alaska 99503
(907) 276-0700

www.akrdc.org

Membership Application

Resource Development Council for Alaska, Inc.
121 W. Fireweed Lane, Suite 250
Anchorage, AK 99503-2035

(907) 276-0700 resources@akrdc.org www.akrdc.org

Name: _____

Title: _____

Company: _____

Mailing Address: _____

City/State/Zip: _____

Phone Numbers Work: _____ Mobile: _____

Email Address: _____

Website Address: _____

Referred by: _____ Date: _____

Annual Membership Categories

	<u>Corporate</u>	<u>Individual</u>
PLATINUM	\$3000 or more	\$500 or more
GOLD	\$1500	\$300
SILVER	\$750	\$150
BASIC	\$500	\$75

Please circle the category in which your organization should be classified:

- Communications • Construction • Engineering/Environmental • Finance
 Fishing • Government • Legal/Consulting • Media • Mining • Native Corporations
 Oil and Gas • Retail/Wholesale • Support Services • Timber • Tourism
 Trade/Business Organizations • Transportation • Utilities/Energy

Method of payment: Enclosed is a check for: \$ _____ or

MC/VISA/AMEX# _____ Exp. Date: _____

The Resource Development Council for Alaska, Inc. is classified a non-profit trade association under IRS Code 501(c)(6). Membership dues and other financial support may be tax deductible as an ordinary and necessary business expense, however, 15.9% of the dues are non-deductible. Dues are not deductible as charitable contributions for federal income tax purposes.

The Alaska Miners Association
Annual Convention and Trade Show Banquet presents the

George Schmidt Memorial

Raffle & Silent Auction

Benefiting the Alaska Mineral and Energy
Resource Education Fund (AMEREF)

Friday, November 6, 2009



Donation Form

Item Description: _____

Donated By: _____

Address: _____

Contract Person: _____

Contact Number: _____

Instructions: _____

Item Value: _____

Item Will Be: mailed delivered please pick up on: _____

Please send prizes and completed form to:
AMEREF Raffle & Silent Auction
121 W. Fireweed Lane, Suite 250
Anchorage, AK 99503

For a current list of sponsors, visit www.ameref.org.

Please contact Marleanna at 907-276-0700 ext. 4 or msoto@akrdc.org with any questions.

AMEREF's mission is to provide Alaska's students with the knowledge to make informed decisions relating to mineral, energy, and forest resources.

AMEREF is a 501(c)(3), and your donation may be tax deductible.

Win a 7-Day Cruise for 2!



Holland America Line

A Signature of Excellence



Plus many other **FABULOUS** prizes* donated by:

Alaska Laser Wash
Alaska Miners Association
Alaska Telecom Inc.
Anchorage Golf Course
Artique Limited
Bear Tooth/Moose's Tooth
Bradley House
Calista Corporation
Coastal Helicopters Inc.
Coeur Alaska - Kensington Gold Mine
ConocoPhillips Alaska, Inc.
Denali Alaskan Federal Credit Union
Dianne's Restaurant
Fairbanks Gold Mining, Inc.



Great Harvest Bread Company
Horse Trekkin Alaska
Intuitions Day Spa & Salon
Juice Plus
Lynden
Mahay's Riverboat Service
Pebble Partnership
PenAir
Silverado Gold Mines
Spencer & Carolyn Lyman
Tastee Freeze
Temsco Helicopters
Tesoro Alaska Company
Usibelli Coal Mine, Inc

*As of 10/14. For an updated list of prize sponsors, please visit ameref.org.

Tickets only \$10 each or a book of five for \$40

Proceeds benefit the Alaska Mineral & Energy Resource Education Fund (AMEREF).
The George Schmidt Memorial Raffle & Silent Auction will be held at the conclusion of
the Alaska Miners Association Banquet on Friday, November 6, 2009.

Need not be present to win!