

Point Thomson Project Update

Resource Development Council Breakfast

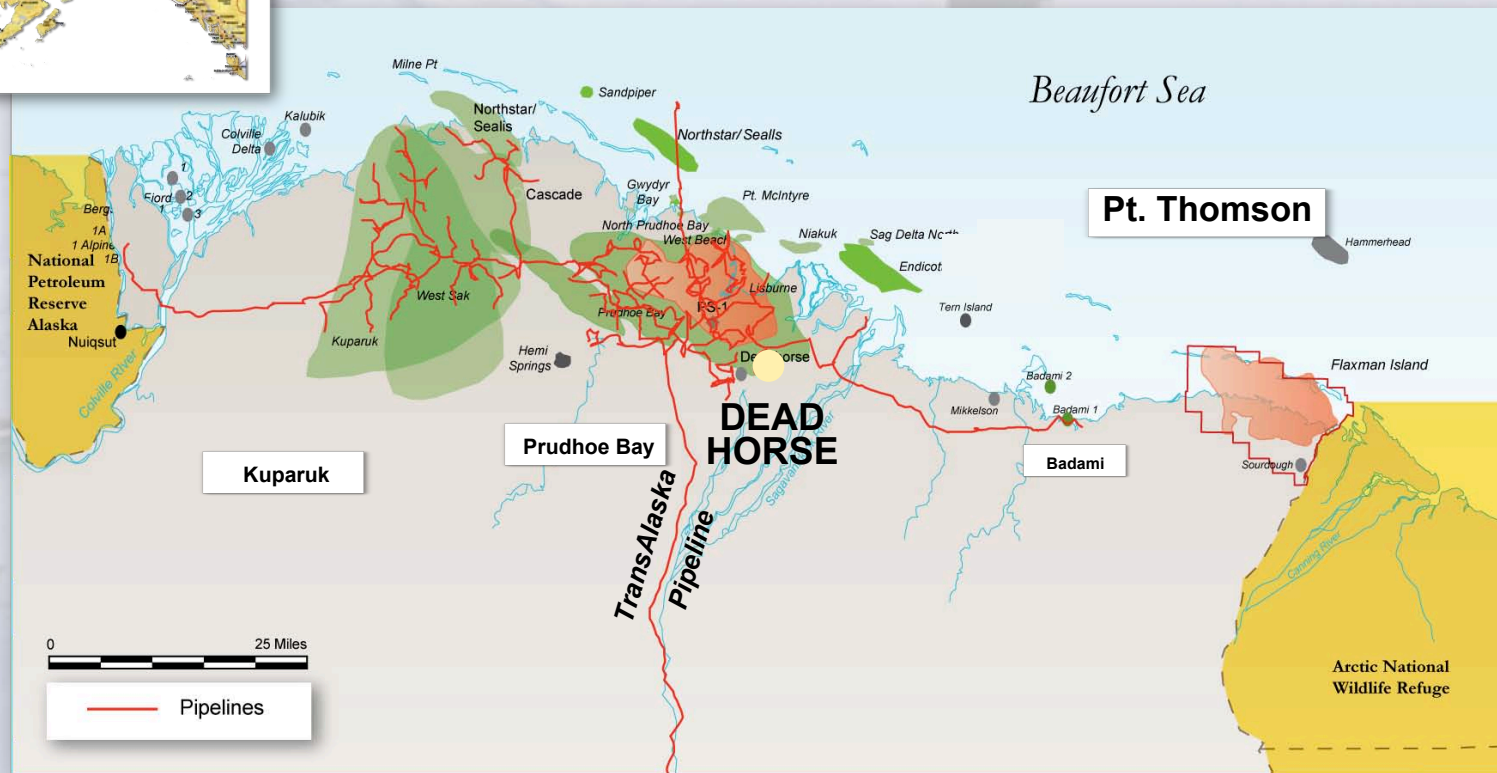
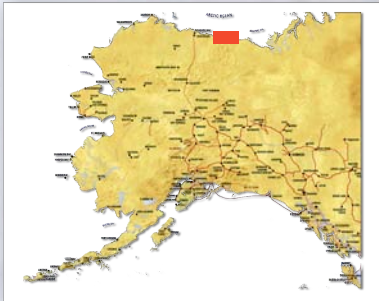
May 21, 2009

**Craig A. Haymes
ExxonMobil Alaska Production Manager**

Point Thomson

Commitment to Leadership
**POINT
THOMSON
PROJECT**

- Located in remote and environmentally sensitive area
- 60 miles east of Prudhoe Bay and TransAlaska Pipeline
- 22 miles east of Badami
- 66 miles west of Kaktovik



Drilling Operations Underway – Over \$150M Spent Over the Last 2 Years

Point Thomson Project - Commitment to Produce



2007-2008



2008-2010



2008 +



2010-2014



2014

\$1.3+ Billion Project

2007

2008

2009

2010

2011

2012

2013

2014

- Over 250 Jobs
- Over 100 Alaskan Companies

- Design Engineering
- Procurement
- Construction
- Installation
- Over \$200M per year
- Over 400 Jobs per year

- Production with Future Expansions

Companies in Alaska are Benefiting

Point Thomson

Commitment to Produce
**POINT
THOMSON
PROJECT**

- Advertising Strategies
- AER Heavy Equipment (Airport Equipment Rentals)
- Aero-Metric, Inc.
- Air Liquide America L.P.
- Air Logistics of Alaska, Inc.
- Alaska Airlines
- Alaska Clean Seas
- Alaska Frontier Constr.
- Alaska Industrial, LLC
- Alaska Security Consulting Services
- Alaska Telecom, Inc.
- Alaska Tent & Tarp
- Arctic Fox Lab
- Arctic Slope Regional
- ASTAC(Arctic Slope Telephone Association Cooperatives, Inc.)
- Atigun, Incorporated
- Aurora Automotive Welding and Fabrication
- Bart Rozelle
- Brooks Range Supply, Inc.
- Cameron
- Cameron International Corporation
- Capital Cabinets
- Capital Office Systems
- Caribou Construction, Inc.
- Carlile Transportation Systems
- CH2M Hill
- Chiniak Environmental Consulting
- Chumis Cultural Resource Services
- Climate Control
- Collarini Energy Staffing, Inc.
- Colville, Inc.
- COMPOSITECH
- CONAM Construction Co.
- Container Specialties
- Crowley Alaska, Inc.
- Delta Leasing, LLC
- DHL Global Forwarding
- Doyon Security
- Doyon Universal Services, LLC
- Duane Miller & Assoc.
- ENTRIX Environmental Consultants, Inc.
- Epoch Well Services, Inc.
- ERA Helicopters, Inc.
- F. Robert Bell & Associates
- Fairweather E&P
- Fairweather, Inc.
- FMC
- Food Services of America
- Fronter Flying Service/ERA Aviation, Inc.
- Frontier Alaska
- GBR
- Guardian Security
- Halliburton

Companies in Alaska are Benefiting

Point Thomson

Commitment to Produce
**POINT
THOMSON
PROJECT**

- Handle Construction
- Hoefler Consulting Group
- ICE Services
- Jeff Schultz Photography
- JL Properties
- Kelly Services
- Lewellen Arctic Research, Inc.
- MagTec Alaska, LLC
- Marsh Creek, LLC
- Media Production Associates
- M-I SWACO
- Minn-Alaska Transport
- MRO Sales, Inc.
- Nabors Alaska Drilling, Inc.
- NANA Oilfield Services, Inc.
- NANA/Colt Engineering
- Nanuq
- National Oilwell Varco
- NMS Employee Leasing
- NMS Training System
- NMS-Purcell
- North Slope Borough (Waste Pickup)
- North Slope Telecom, Inc.
- Northern Air Cargo
- Northern Engineering
- Northern Land Use Research, Inc.
- Northland Wood Products, Inc.
- Oasis Environmental
- Patton Boggs
- Peak Oilfield Services, Inc.
- Penn Air
- Perman Stoler CHB, Inc.
- PGS Onshore
- PND Engineers
- Polar Supply Company
- Precision Power LLC (Division of Peak)
- Prudhoe Bay Hotel
- Quadco, Inc.
- SAVANT Alaska, LLC
- Schlumberger
- SLR
- TerraSond Limited
- The Response Group
- The Surveyors Exchange Co., Inc.
- Tuboscope
- Udelhoven Oilfield System Services
- VEI Consultants
- W.W. Grainger, Inc.
- Warning Lights of Alaska
- Weston Solutions
- Worley-Parsons

Point Thomson Project

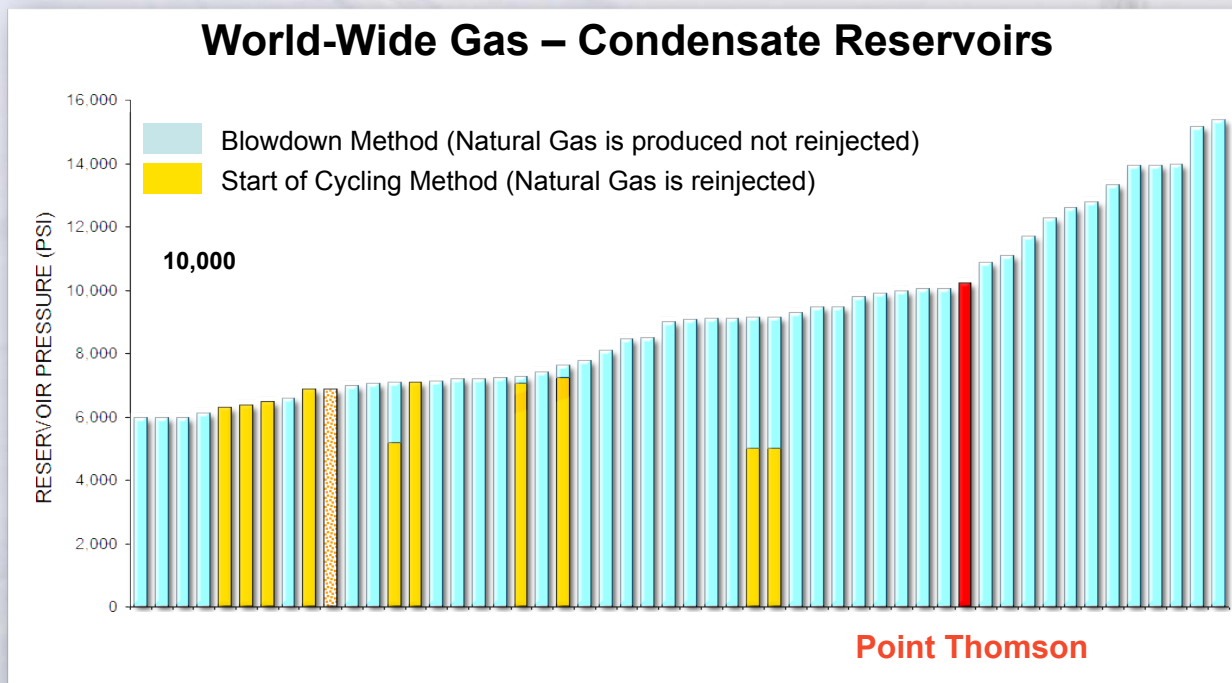
- Produce Oil, Condensate, Gas
- Initial Design Capacity:
 - + Gas - 200 MCFD
 - + Condensate - 10 KBD
 - + Oil - up to 10 KBD
- Cost >\$1.3 Billion
 - + Central Production Facility
 - + 3 drill pad locations
 - + Pipeline 70 KBD liquid sales
 - + Infrastructure camps, etc.
 - + 5 drill wells

Project Illustration



Cycling at High-Injection Pressure

Commitment to Produce
**POINT
THOMSON
PROJECT**



- No cycling projects similar to Point Thomson (>10,000 psi injection pressure)
- World's highest pressure gas cycling project

Design Engineering

Commitment to Produce
POINT
THOMSON
PROJECT

Point Thomson Project Separation Module

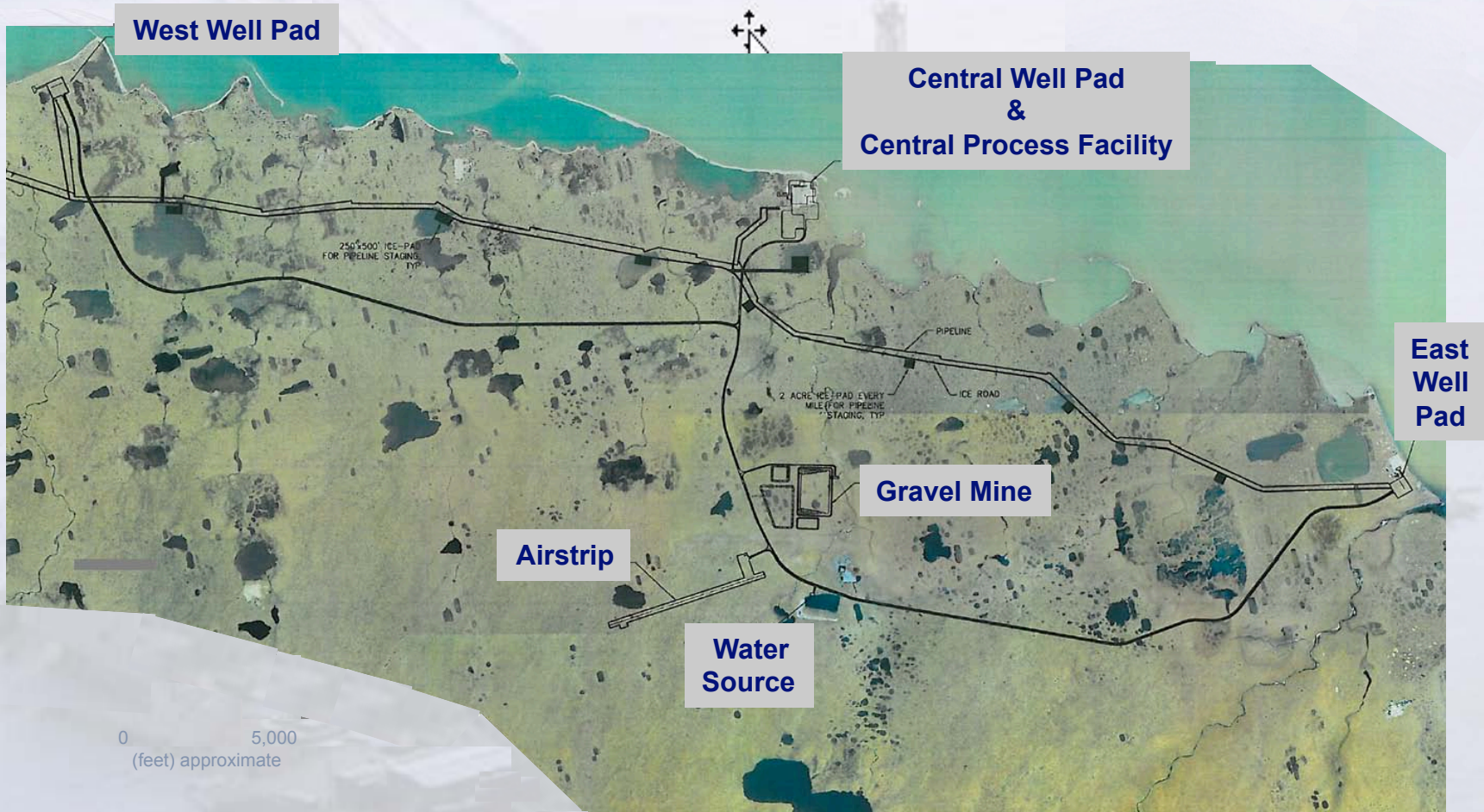


Legend

Yellow :	● Process Gas
Orange:	● Process Liquid
Green:	● Flare
Blue:	● Utilities
Red:	● Fire Protection
Violet:	● HVAC

Point Thomson Project Conceptual Layout

Commitment to Produce
**POINT
THOMSON
PROJECT**



Construction Activities

Surveying and Staking of West Pad

Commitment to Produce
**POINT
THOMSON
PROJECT**



Construction Activities

Barging Route

Commitment to Produce
**POINT
THOMSON
PROJECT**



- 60 Miles
- Working with North Slope Borough, villages, & Alaska Whaling Commission
- Route modified for subsistence concerns



Construction Activities

Barging and Staging

Commitment to Produce
**POINT
THOMSON
PROJECT**



First Barges Arrive on Site - Aug '08



Construction Activities

Staging and Pad Preparation

Commitment to Produce
**POINT
THOMSON
PROJECT**



Accommodation Units - Aug '08



Gravel Pad Prep - Aug '08

Construction Activities

Staging and Installation of Conductors

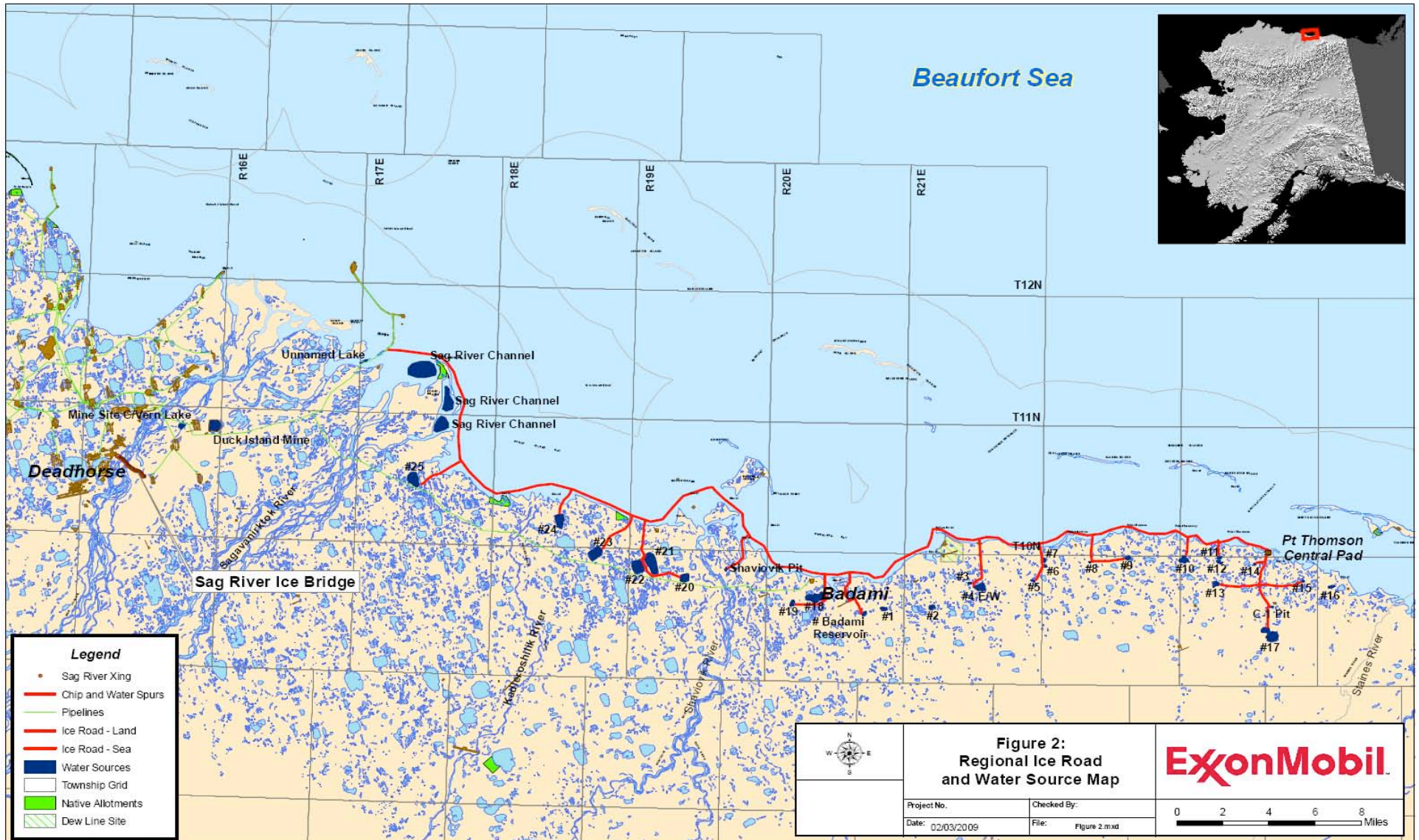
Commitment to Produce
**POINT
THOMSON
PROJECT**



Conductor Installation - Sept '08



Point Thomson Project – 50 mile Sea Ice Road



Construction Activities

Sea Ice Road & Airstrip

Commitment to Produce
**POINT
THOMSON
PROJECT**

- Ice road requires >50 tons of equipment to build
- Ice road built on frozen ocean, thickness increased with water and ice

Ice Airstrip - Mar '09



Ice Road - Apr '09



Ice Road Construction



Construction Activities

Continued Pad Preparation

Commitment to Produce
**POINT
THOMSON
PROJECT**

Pt Thomson Site - Feb '09



Rolligon Transport - Feb '09



Construction Activities

Transportation of Materials

Commitment to Produce
**POINT
THOMSON
PROJECT**

Insulated Pad Transport - Mar '09



Rig Mat Transport - Mar '09



Construction Activities

Continued Pad Preparation

Commitment to Produce
**POINT
THOMSON
PROJECT**



Insulated Pad Installation - Mar '09

Construction Activities

Continued Pad Preparation

Commitment to Produce
**POINT
THOMSON
PROJECT**



Rig Mat Installation - Mar '09



Construction Activities

Continued Pad Preparation

Commitment to Produce
**POINT
THOMSON
PROJECT**



Fuel Tanks - Mar '09



Water Tanks - Apr '09

Rig Upgrades

- **Over \$25 Million Spent**
- **Derrick Refurbished (Edmonton)**
- **Drawworks Replaced (Deadhorse, AK)**
- **Engines Overhauled (Seattle)**
- **Mud pump module fabrication (Aurora, AK)**
- **Mud pumps overhauled (National Oilwell, Anchorage)**



Drill Rig Upgrades

Commitment to Produce
**POINT
THOMSON
PROJECT**

27E Rig - Mar '09



ExxonMobil Deadhorse Yard



Rig Mobilization

Commitment to Produce
**POINT
THOMSON
PROJECT**



Drilling Rig Pipe Shed - Apr '09



Drilling Rig Power Module - Apr '09

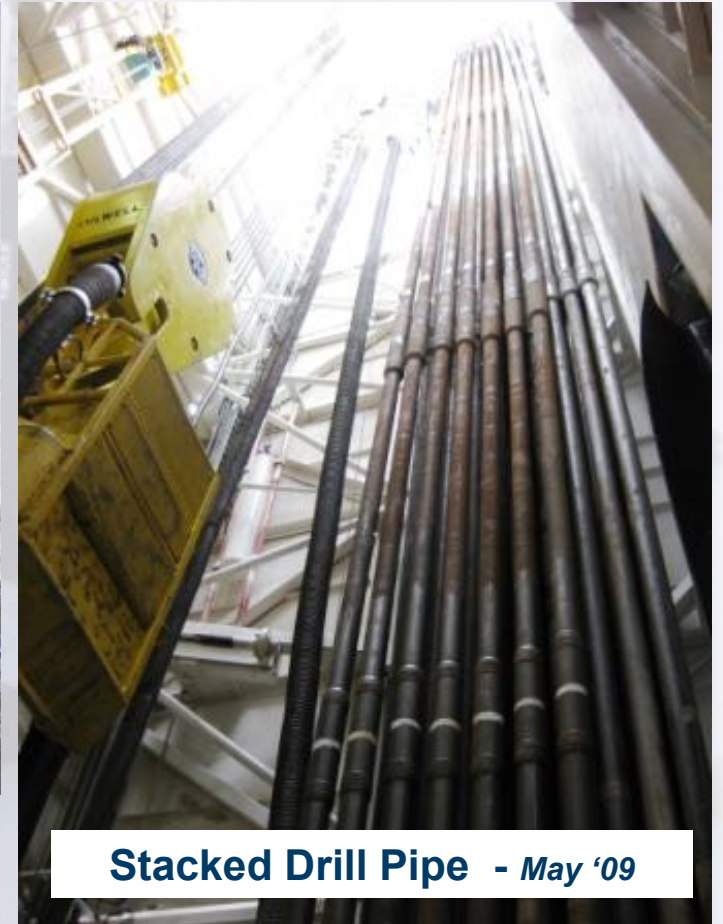
Drilling Preparations

Commitment to Produce
**POINT
THOMSON
PROJECT**

Drilling Rig on Site - Apr '09



Stacked Drill Pipe - May '09



Construction Activities

Continued Pad Preparation

Commitment to Produce
**POINT
THOMSON
PROJECT**



**Drill Cuttings Storage Pit
Construction - Apr '09**



Completed Drill Cuttings Storage Pit - May '09

2009 Drilling Operations

Point Thomson #15 well surface hole complete (5000 ft)

Commitment to Produce
**POINT
THOMSON
PROJECT**



Bit Entering Hole - May '09



Adding Section of Drill Pipe - May '09



Point Thomson Pad with Rig on Site - May '09

2009 Plans

- Drill surface hole for Point Thomson 16 wells
- Barge in additional equipment and supplies in summer
- Progress detailed design for production facilities
- Drill intermediate holes for Point Thomson 15 and Point Thomson 16 wells beginning winter 2009