

# Alaska's Offshore Oil and Gas: Progress and the Future

*Alaska Resource  
Development Council*

*John Goll  
MMS Alaska Regional  
Director*

*October 6, 2005*



# MMS Background: An Ocean & Mineral Agency

- The Outer Continental Shelf
  - off the coast beyond 3 miles
- Oil and Gas Leasing, Regulation, Monitoring, Inspections
- Sand, gravel, gold, and other minerals,
- Energy from wind, currents, waves
- Royalty Collection and Disbursement



- Environmental & Technical Research

**MUSKEG HEIGHTS**  
*Peter Dunlap-Shohl*





# *The Effects of Katrina and Rita*



# DOI Alaska Goals

- Increase Access to Prospective Lands
- Ensure Clarity of the Permitting Regimes
- Consider Reasonable Incentives Offshore

*From December 12, 2002 Alliance Breakfast*



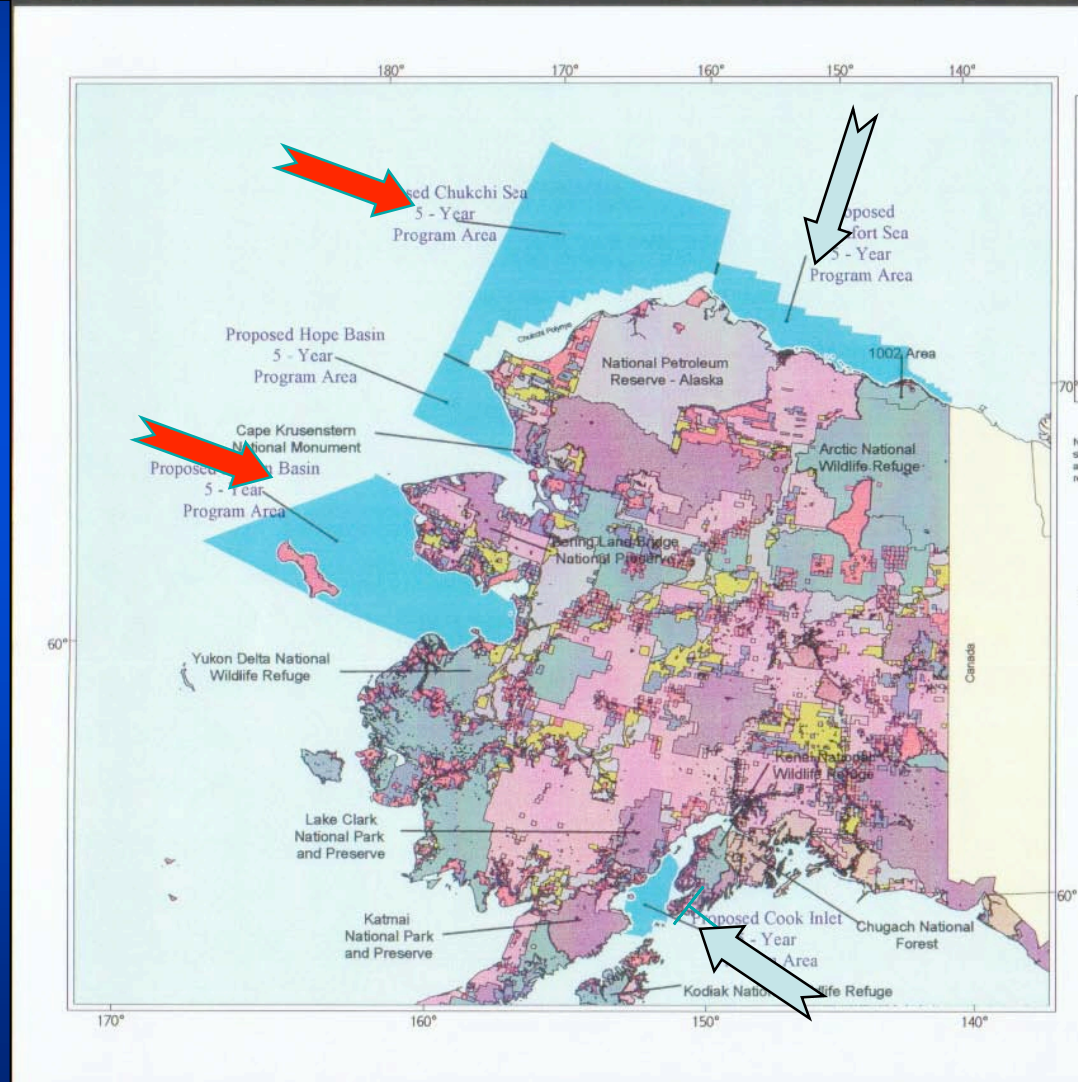
## 3 E's

- **Energy**
  - **Economy**
  - **Environment**
- Nationwide
  - Statewide
  - Locally
- Opportunities for people
  - Keeping the environment safe and available for local uses

# Where Have We Been?

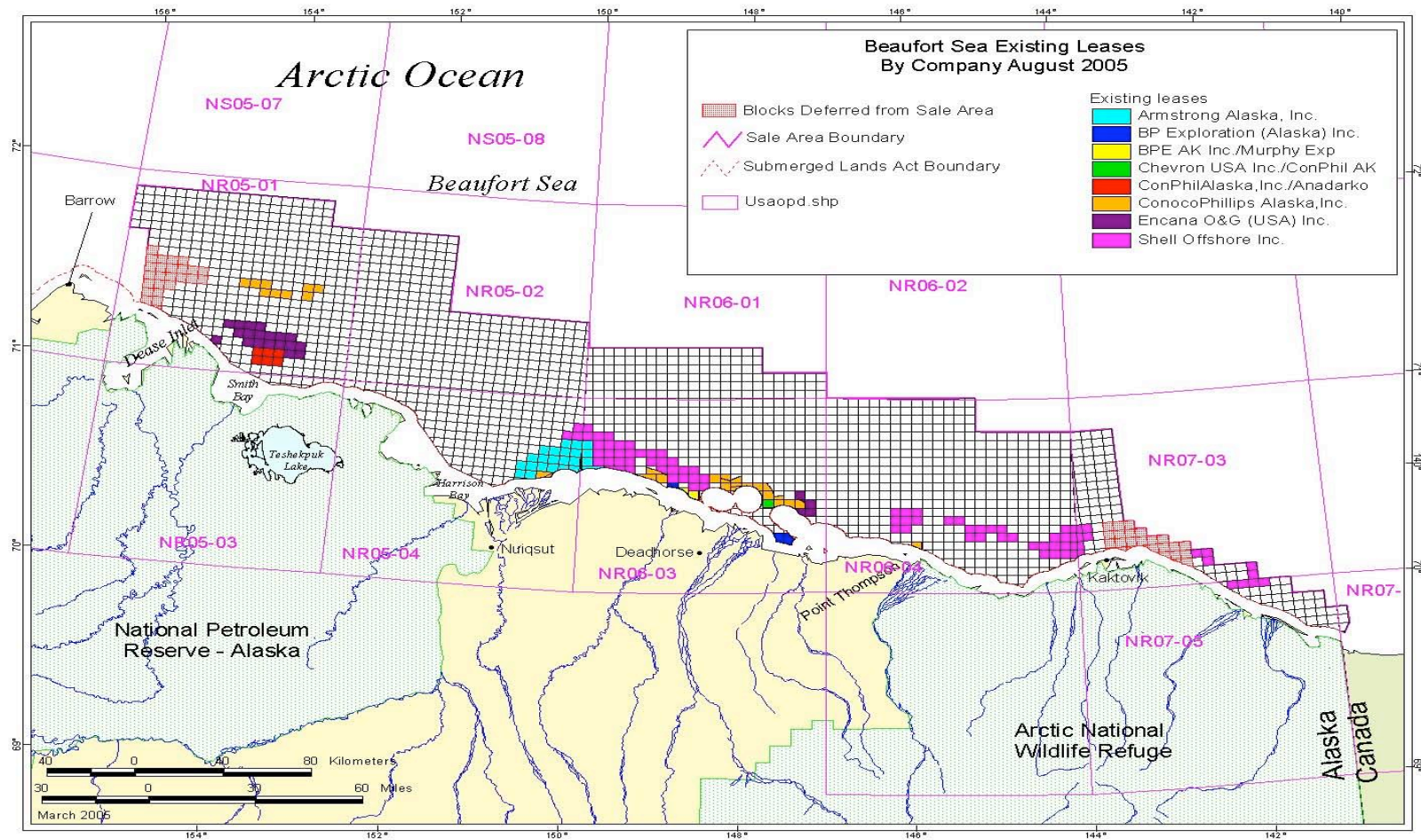
## The 5 Year Plan -- 2002-2007-- Alaska

- Access
- Keeping Options Open
- Traditional Sales →
  - Beaufort Sea
  - Cook Inlet
- Interest Based Sales →
  - Chukchi Sea/Hope Basin
  - Norton Basin





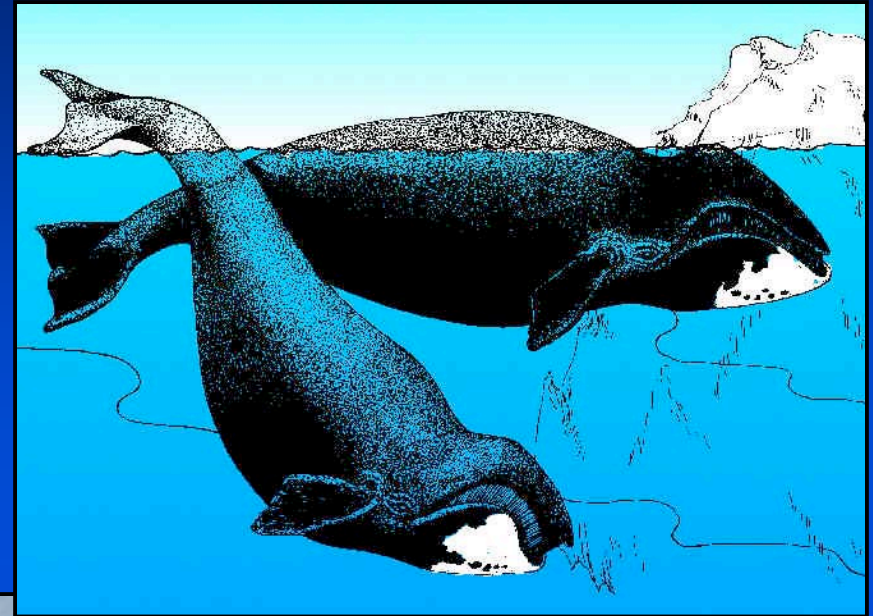
# Beaufort Sea – Sales 186 and 195





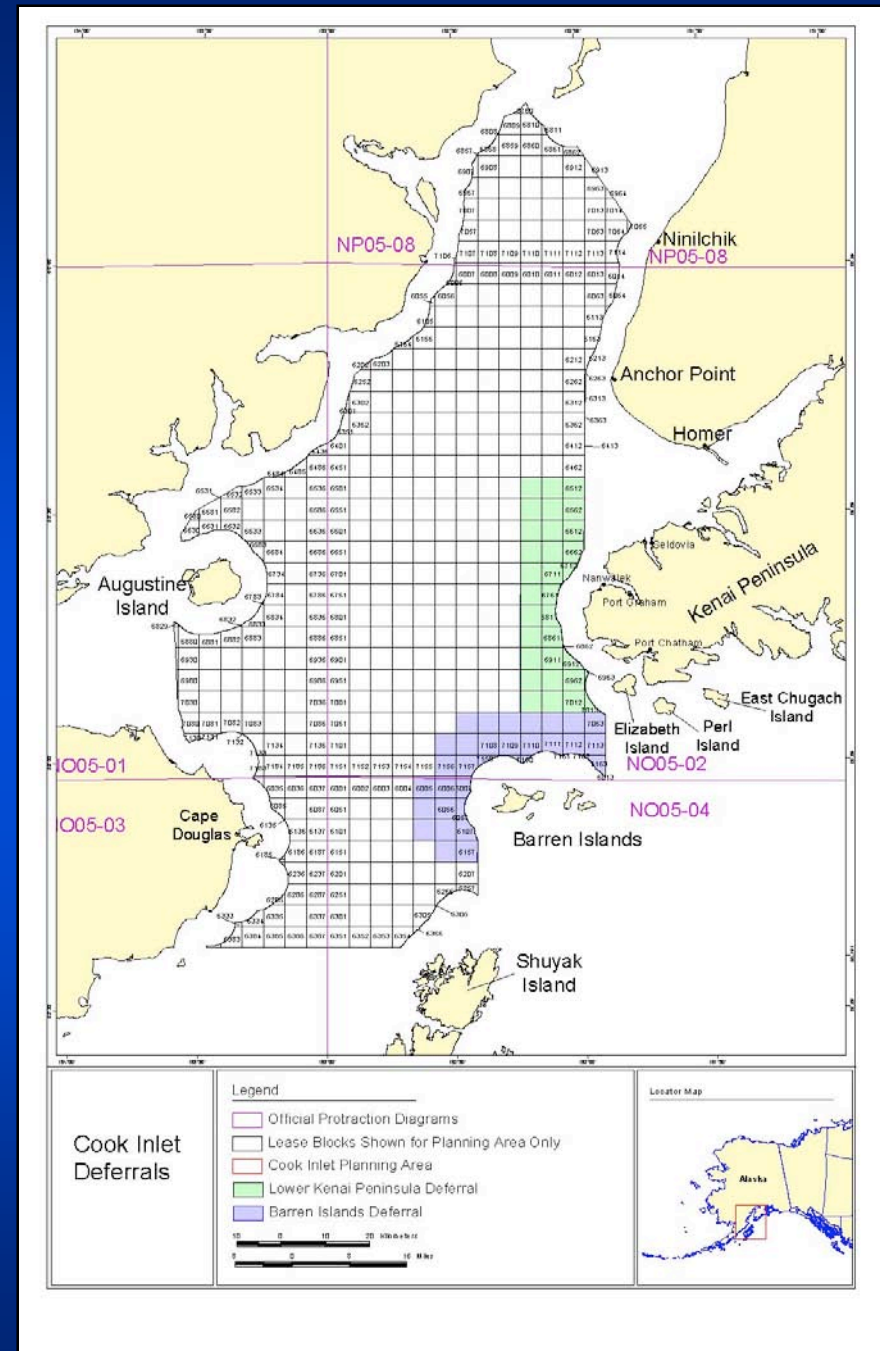
# NSB/AEWC/ICAS

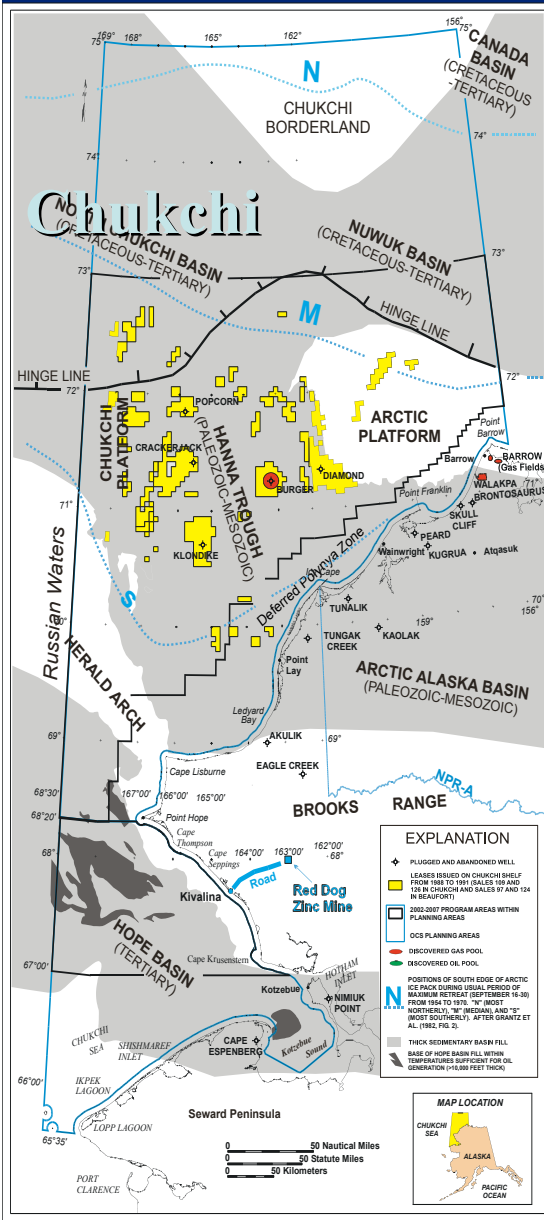
- 7 Points
  - Offshore activities and the bowhead subsistence hunt
  - Conflict Avoidance Agreements and the Good Neighbor Policy
  - Public Input
  - Oil Spill Risk Assessments
  - Cumulative Effects and the NSB Comprehensive Plan
  - Scientific Studies and Peer Review
  - Bowhead Whale Feeding Study
- MOA – NV Kaktovik



# Cook Inlet

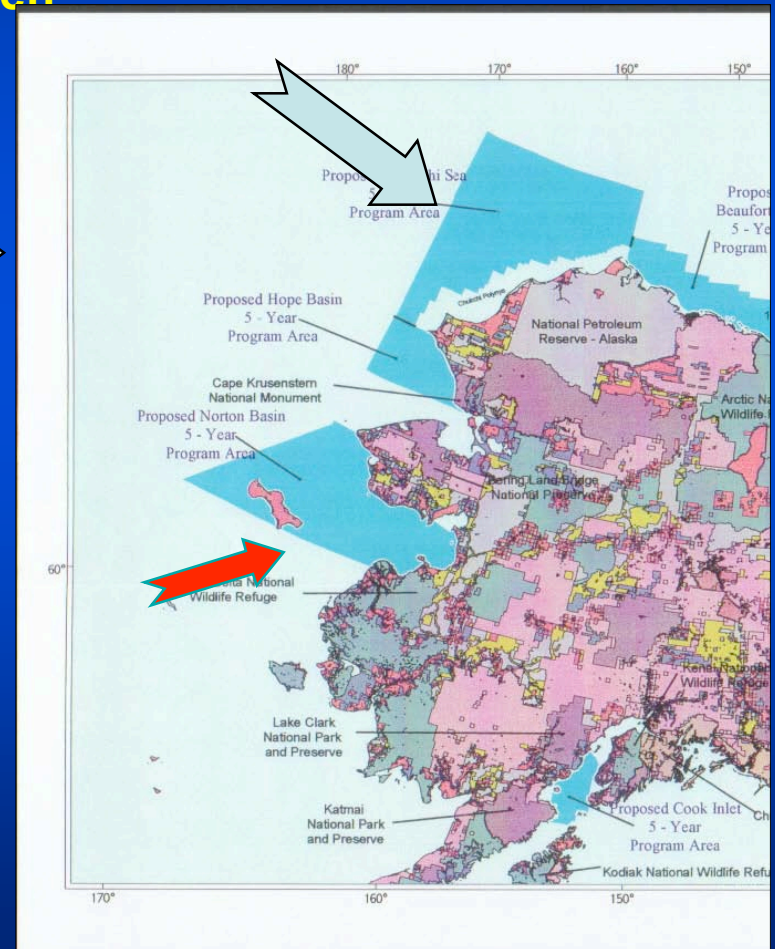
- No Takers
- Call this winter
- May 2007 ?





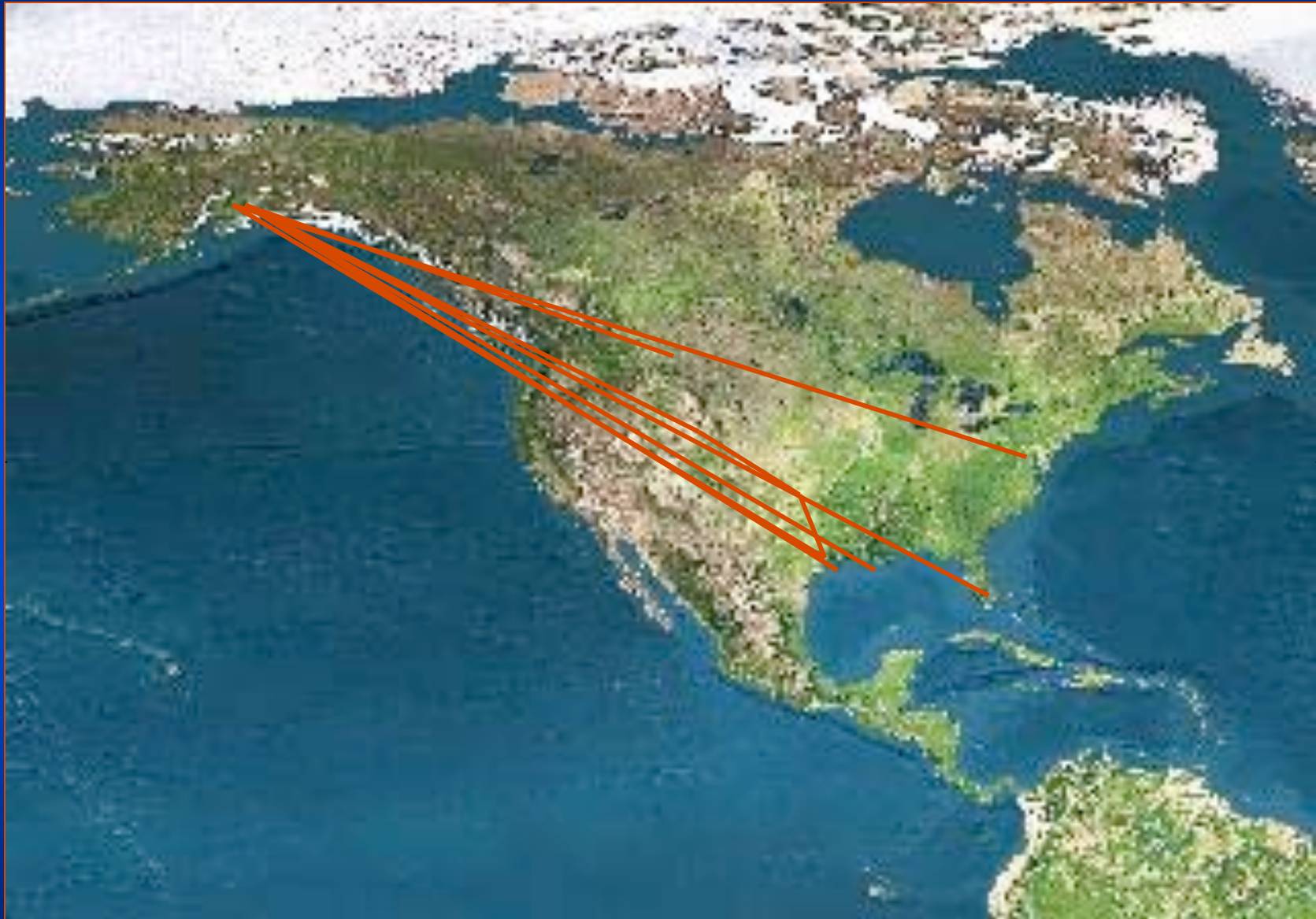
# The 5 Year Plan -- Alaska

- Annual Calls
- Keeping Options Open
- Local Use (?)
- Interest approach:
- Chukchi/Hope
  - 2 sales
- Norton Basin
  - gas for locals?





# Taking to the Road



# BURGER CONDITIONAL\* DISCOVERED RESOURCES-YEAR 2000

Fill Model	Pool Area (Acres)	Gas Resources (Tcf)			Condensate] (Mmb)		
		F95	Mean	F05	F95	Mean	F05
Minimum	52,516	2.389	7.629	17.256	107	393	925
Most Likely	97,545	4.335	14.038	31.384	203	724	1,700
Maximum	189,803	8.496	27.472	63.210	371	1,404	3,370

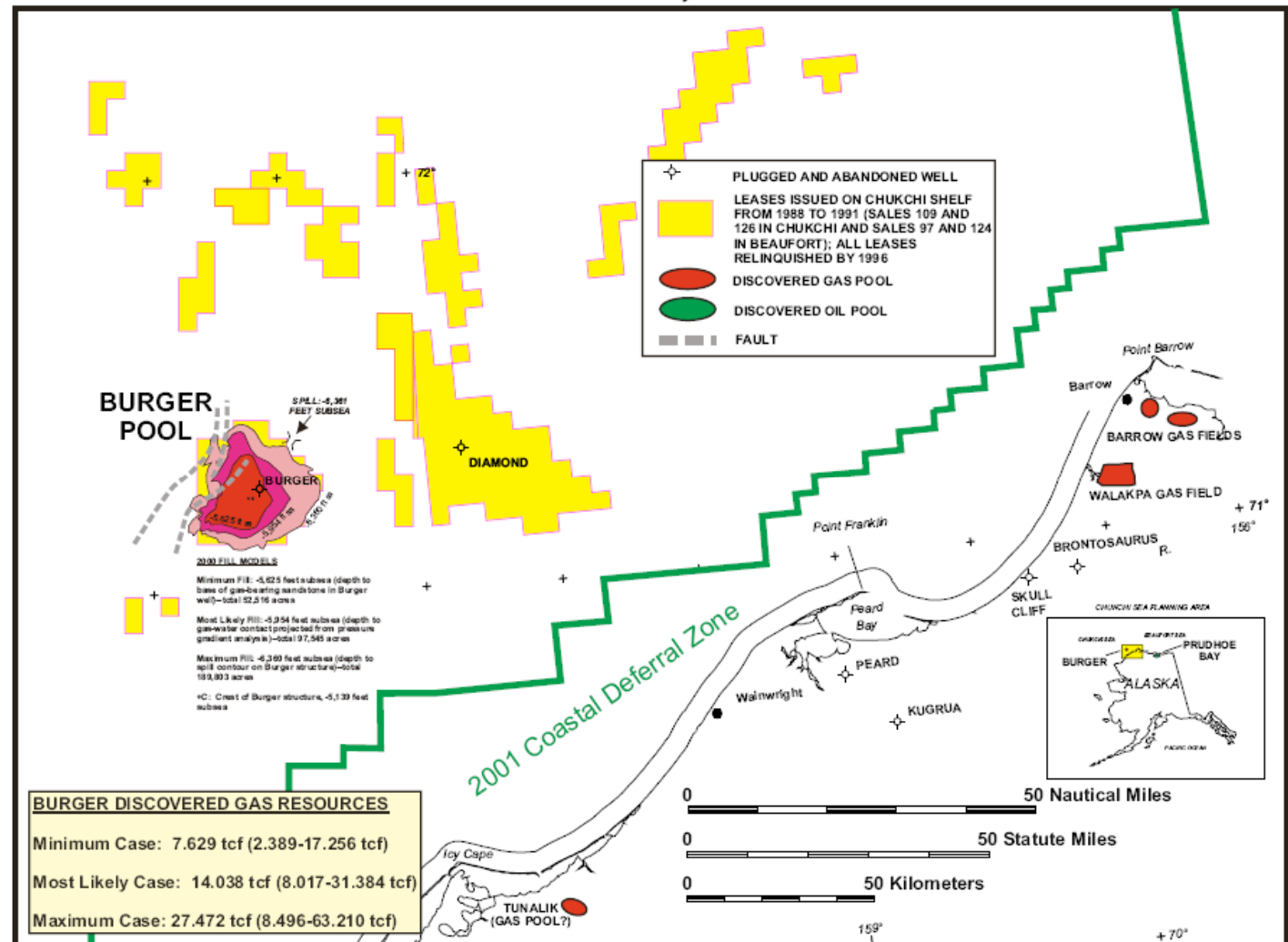
Chukchi Sale

Late 2007 –  
Early 2008

Pending  
5 Year  
Decisions



## BURGER GAS POOL, CHUKCHI SHELF

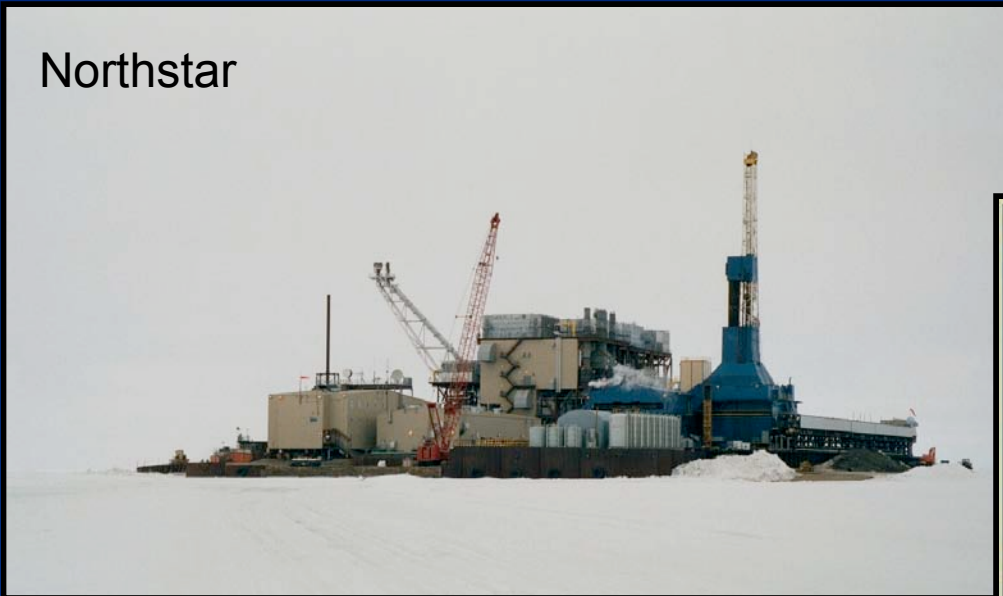


Economic Study of the Burger Gas Discovery, Chukchi Shelf, Northwest Alaska  
Craig, J.D., And Sherwood, K.W., 2001 (rev. 2004), MMS-AKOCSSR

PLATE 2: BURGER POOL AND REGIONAL GAS FIELDS

# The Present and the Future

Northstar



Cosmopolitan



ConocoPhillips Cosmopolitan project; photo taken Sept. 29, 2001.

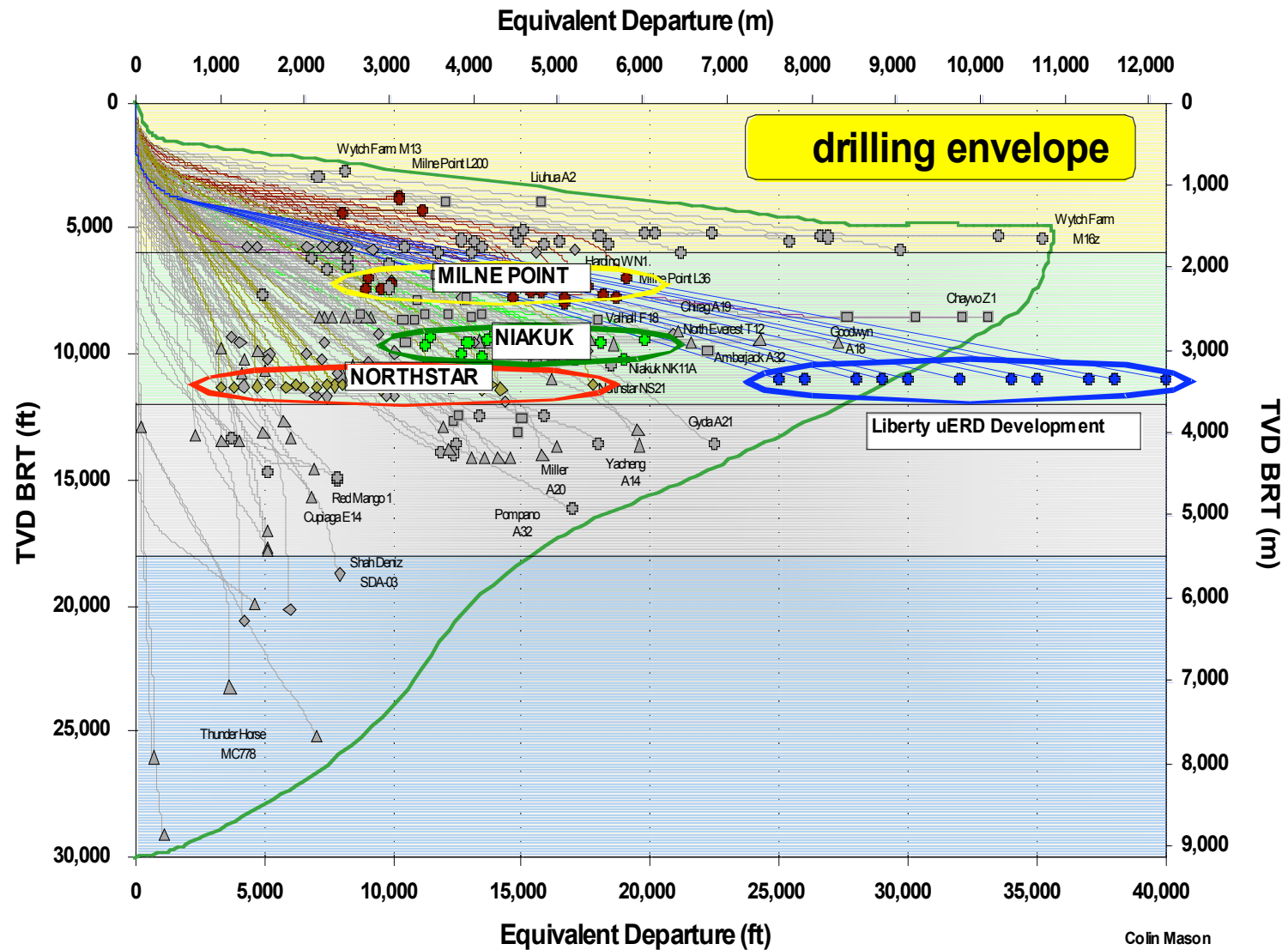
Lin Rad, Eagle Eye Helicopter Inc.



Seismic Surveys



# Extended Reach Drilling at Liberty



Colin Mason  
March 2005

# The Future

- Beaufort Sea Sale 202 – March 2007
- Cook Inlet 199 – May 2007 (?)
- Chukchi Sea 193 – Nov. 2007 (pending 5 Year)

# Alaska OCS Potential

(Risky, Undiscovered, Conventionally Recoverable)  
(MMS 2000 National Assessment)

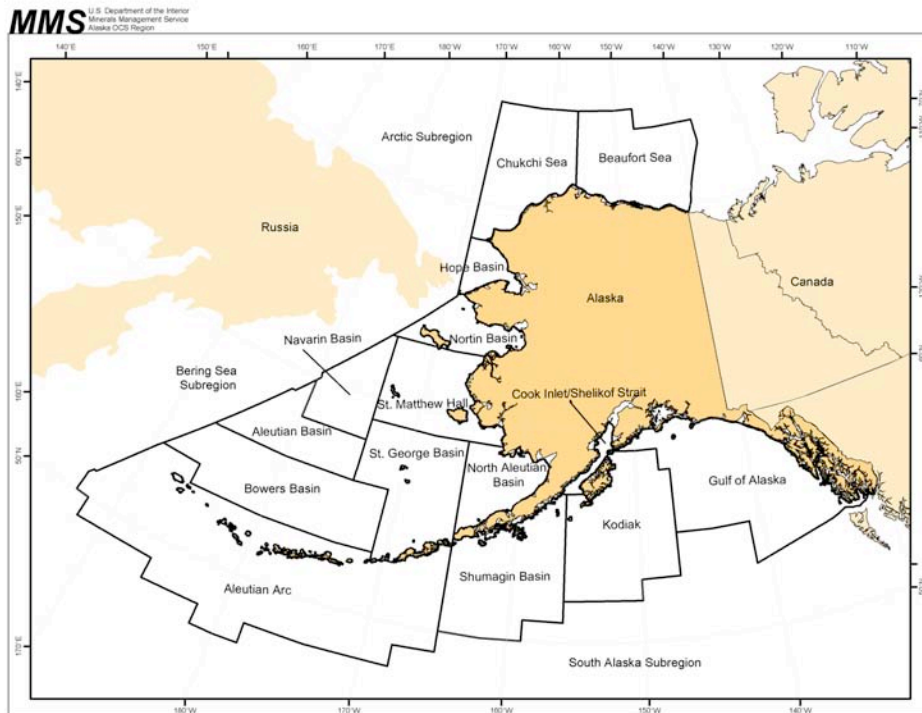
	OIL	(Billion	Barrels)	Gas	(TCF)	
	95%	Mean	5%	95%	Mean	5%
<u>Alaska OCS Total</u>	<u>17</u>	<u>25</u>	<u>35</u>	<u>55</u>	<u>123</u>	<u>227</u>
Chukchi	9	15	25	14	60	154
Beaufort	4	7	12	13	32	63
Hope	0	0.1	0.3	0	3	11
Norton	0	0.05	0.2	0	3	9
Cook Inlet	0.3	0.8	1.4	0.7	1.4	2.5
N.Aleutian (2005)	0	0.8	2.5	0.4	9	23



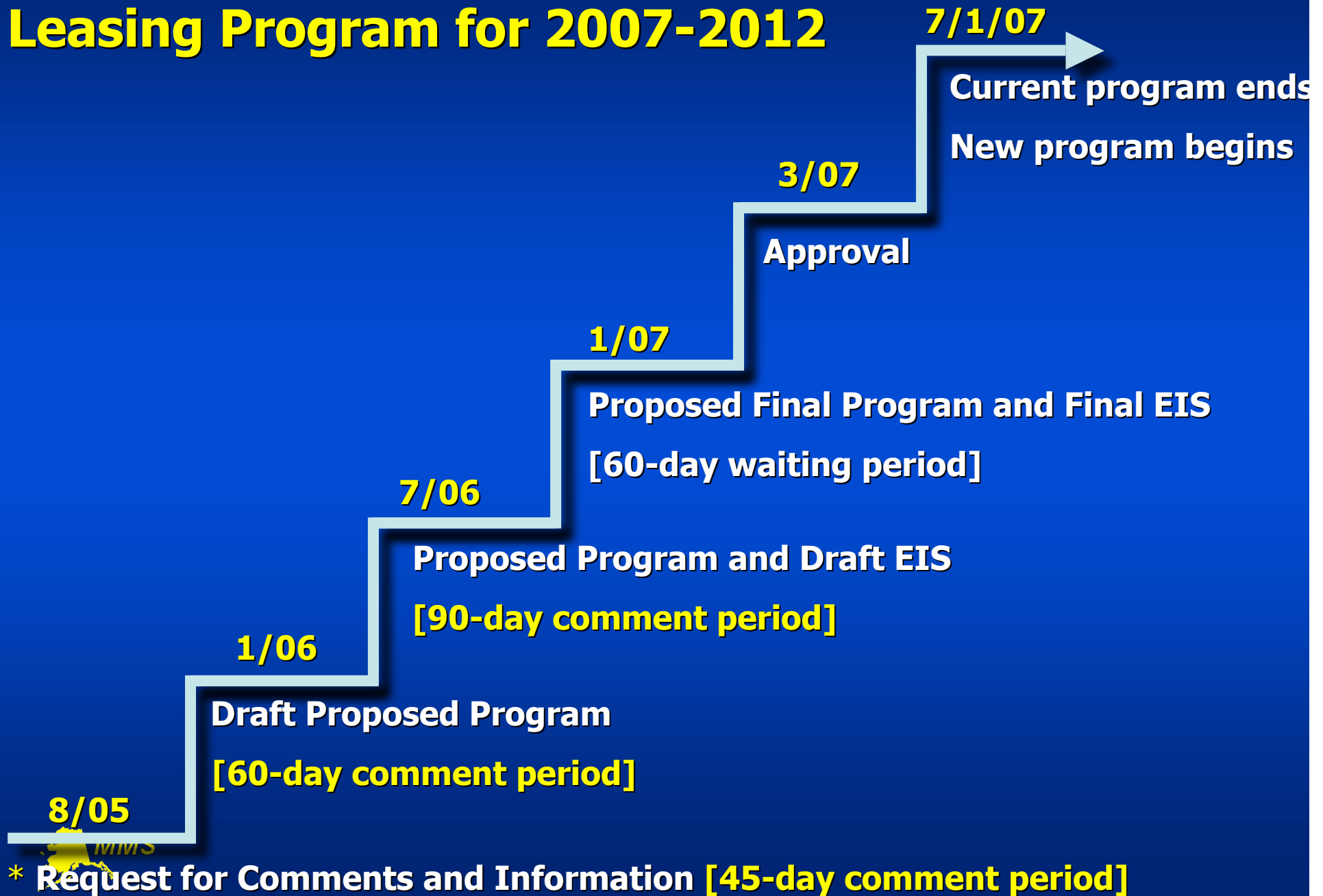


# The Future: 2007-12 Five Year Plan

- **Initial step:**
  - Request for Information
  - Comments due Oct. 11
- What areas to consider for leasing?
  - Size, timing, and location
- Moratoria/withdrawal areas
  - Keep? Modify? Expand?
  - North Aleutian Basin? (Bristol Bay)
- Gas-only leasing?
- Keep “special interest” sales in Alaska?
- Drop restricted joint bidding in Alaska?



# Preparation of the OCS Oil and Gas Leasing Program for 2007-2012



## Comments

Mail should be sent to:  
**5-Year Program Manager**  
**381 Elden Street, MS 4010**  
**Herndon, VA 20170**

E-mail –

For 5 Year Program:

[fiveyrplcomments@mms.gov](mailto:fiveyrplcomments@mms.gov)

for EIS specific: [fiveyreiscomments@mms.gov](mailto:fiveyreiscomments@mms.gov).

For more information,

MMS AK Region: 1-800-764-2627

[www.mms.gov/alaska](http://www.mms.gov/alaska)

